

PUBLIC MEETING GREENHOUSE GASES & CLIMATE CHANGE

BALTIMORE, MD

JULY 14, 2015



A message from Secretary Grumbles



Welcome from the Maryland Commission on Climate Change



Agenda

- History of Climate Change Laws in Maryland
- Greenhouse Gas Reduction Act/Plan
- The Programs
- Two Important Reports
- Maryland Commission on Climate Change
- Public Inp-ut Period
- Next Steps



Maryland is (and has been) a Leader

2006 – Maryland Healthy Air Act

2007 – Maryland Clean Cars Act

2008 – Climate Action Plan



The Greenhouse Gas Emissions Reduction Act

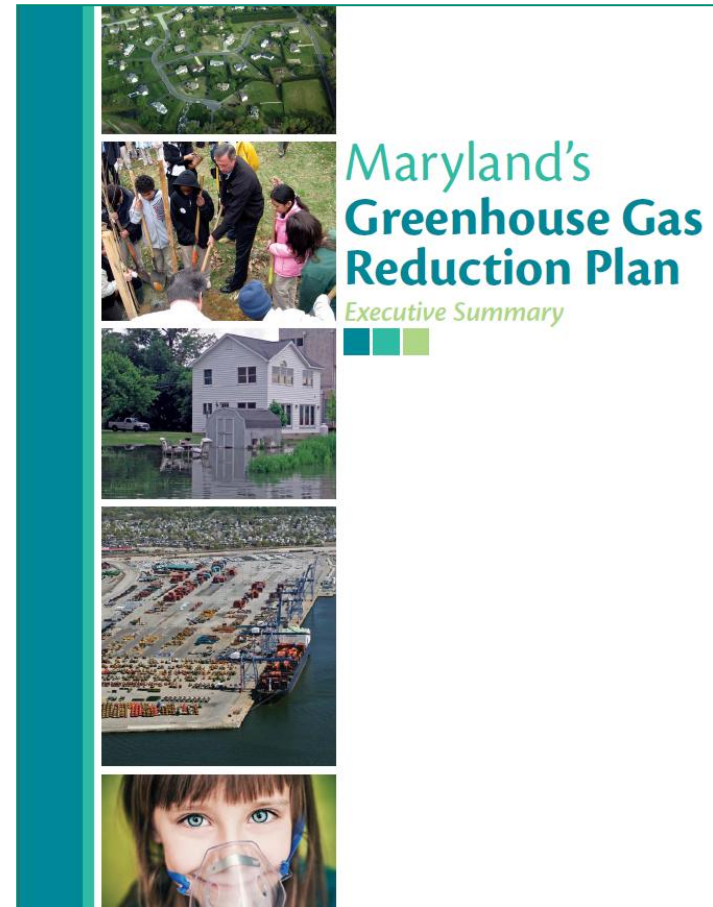


Reduce GHG emissions 25% from a 2006 baseline by 2020




Must have a positive impact on Maryland's economy and jobs

GGRA Plan

- 150-plus programs and initiatives
- Estimated economic benefits of \$1.6 billion and support over 37,000 jobs.
- Supports a green economy
- Preserves valuable agricultural and forest land
- Aids in restoring Chesapeake Bay
- Diversifies energy sources
- Promotes renewable energy
- Encourages energy conservation



The Plan: Programs

Sector	Program (s)
 <p data-bbox="452 396 595 444">Energy</p>	<ul data-bbox="981 339 1754 501" style="list-style-type: none"><li data-bbox="981 339 1632 386">• Renewable Energy Standards<li data-bbox="981 396 1456 444">• EmPOWER Maryland<li data-bbox="981 454 1754 501">• Regional Greenhouse Gas Initiative
 <p data-bbox="401 589 639 636">Zero Waste</p>	<ul data-bbox="981 532 1257 579" style="list-style-type: none"><li data-bbox="981 532 1257 579">• Zero Waste
 <p data-bbox="369 779 672 826">Transportation</p>	<ul data-bbox="981 725 1709 936" style="list-style-type: none"><li data-bbox="981 725 1450 772">• Maryland Clean Cars<li data-bbox="981 782 1676 829">• Public Transportation Initiatives<li data-bbox="981 839 1709 936">• Corporate Average Fuel Economy (CAFE) Standards
 <p data-bbox="426 1023 620 1071">Buildings</p>	<ul data-bbox="981 966 1335 1013" style="list-style-type: none"><li data-bbox="981 966 1335 1013">• Building Codes
 <p data-bbox="407 1218 639 1265">Agriculture</p>	<ul data-bbox="981 1160 1760 1265" style="list-style-type: none"><li data-bbox="981 1160 1760 1208">• Managing forests to capture carbon<li data-bbox="981 1218 1605 1265">• Planting forests in Maryland

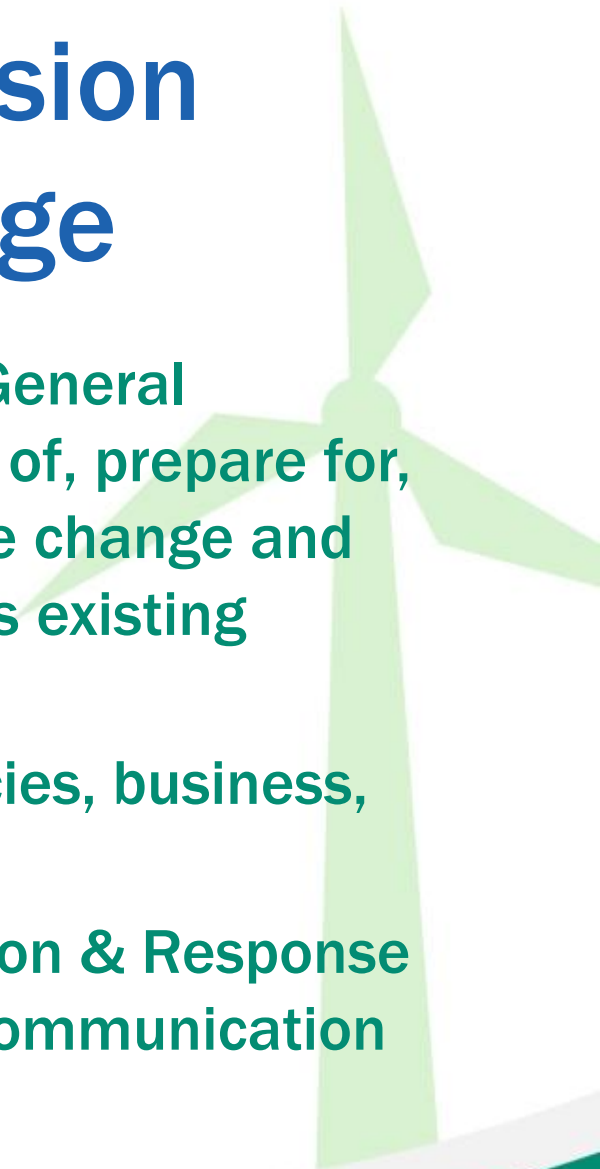
Two Important Reports

- **Maryland Department of the Environment report – October**
- **Maryland Commission on Climate Change report – November**



Maryland Commission on Climate Change

- Charged with advising the Governor and General Assembly on ways to mitigate the causes of, prepare for, and adapt to the consequences of climate change and maintaining and strengthening the State's existing Greenhouse Gas Reduction Plan
- Membership: Senate, House, State Agencies, business, non-profit groups
- Four working groups: Mitigation, Adaptation & Response Scientific and Technical and Education, Communication & Outreach

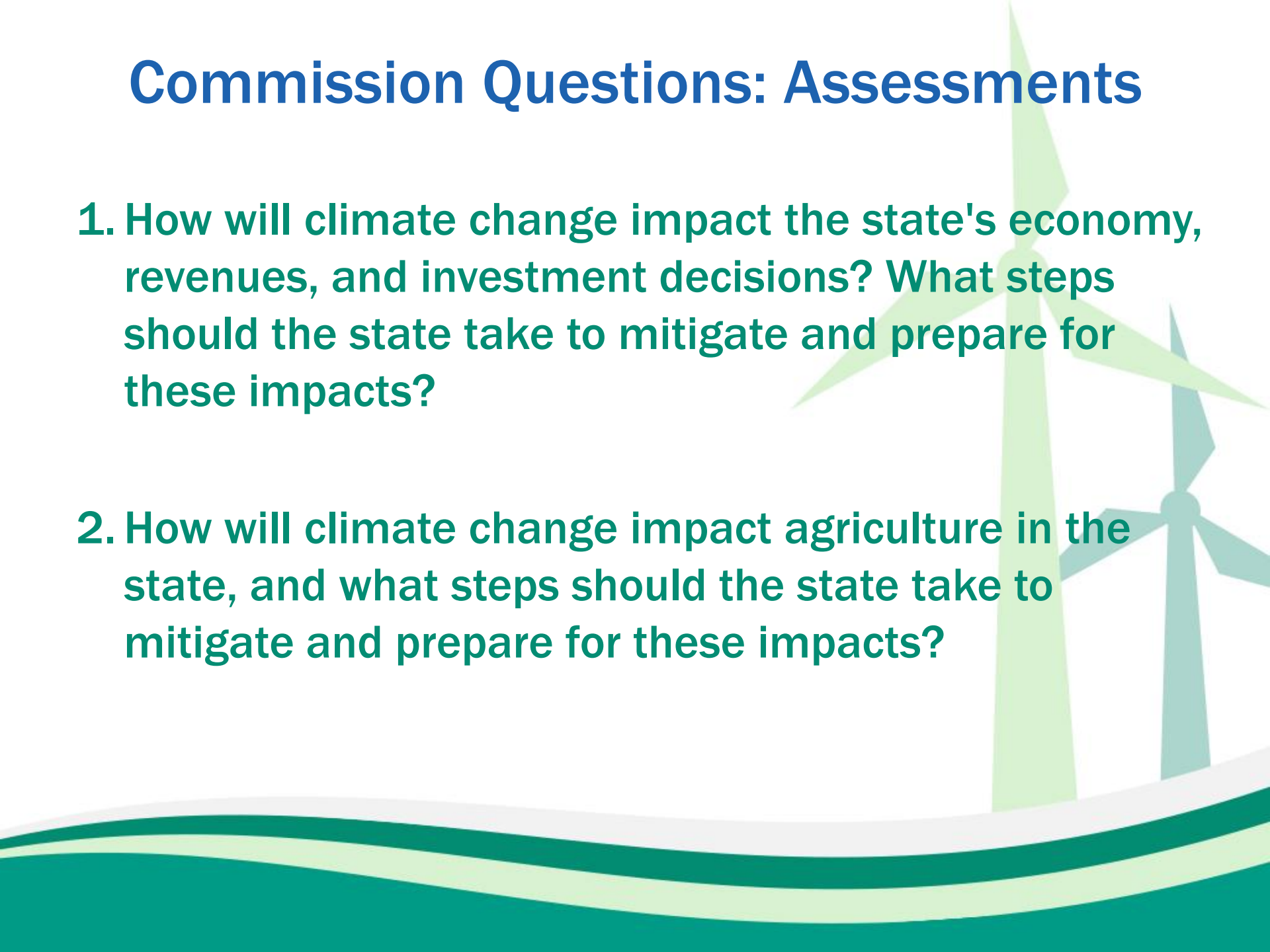


Meet the Commissioners



Commission Questions: Assessments

1. How will climate change impact the state's economy, revenues, and investment decisions? What steps should the state take to mitigate and prepare for these impacts?
2. How will climate change impact agriculture in the state, and what steps should the state take to mitigate and prepare for these impacts?



Commissioner Questions: Interventions

The background features a stylized illustration of two wind turbines in shades of green and teal. At the bottom, there are decorative wavy lines in white, light green, and dark green, suggesting a landscape or water.

1. How can we better communicate with and educate the urgency of acting to reduce the impacts of climate change? Are there particular segments of the population on whom our efforts should be focused?

2. How can we best prioritize and advance intergovernmental and public-private partnerships to address climate change and its impacts?

3. How can we ensure that steps to address climate change benefit all Marylanders? What can we do to address the fact that low income and vulnerable communities are impacted first and worst when it comes to by climate change?

Commissioner Questions: Support



- 1. Should we assist local government in the creation of community-scale climate vulnerability assessments and the development and integration of specific strategies into local plans and ordinances?**
- 2. Should we develop a comprehensive action plan with 5 year benchmarks to achieve science based reductions in GHG emissions beyond 2020? If so, how far out should we plan?**

Commissioner Questions: Other

DID WE MISS ANYTHING?

- Are there any other areas of focus that the Commission should concentrate on that isn't listed? If so, please write it or them on your coupon and bring to the bag labeled other.



**Now we want to hear from you.
What do you think?**



Please submit all ideas to:
climate.change@maryland.gov
by August 31, 2015

For more information on the Greenhouse
Gas Reduction Act Plan, please visit:
<http://climatechange.maryland.gov/>



THANK YOU

