



Maryland
Department of
the Environment

The Maryland Commission on Climate Change

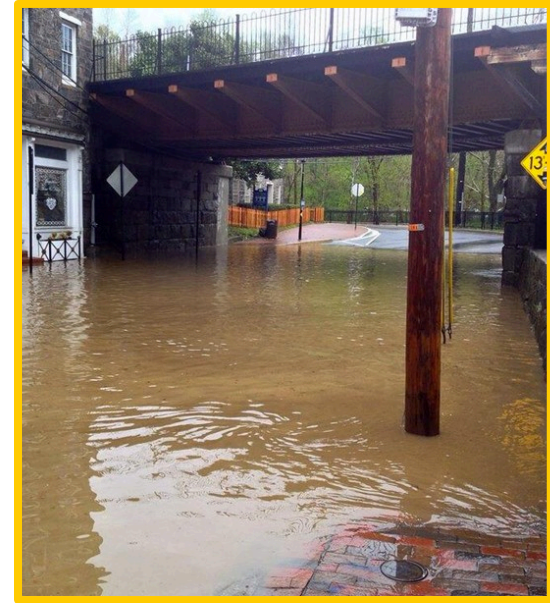
A Preview of Key Issues for the Commission's 2016 Report



Tad Aburn, Air Director, MDE
Maryland Commission on Climate Change Orientation
June 20, 2016

Session Overview

- Introduction - MDE
- A preview of potential recommendations for the 2016 report of the Maryland Commission on Climate Change (MCCC)
 - Adaptation and Response Working Group (ARWG)
 - Education, Communication and Outreach (ECO) Working Group
 - Scientific and Technical Working Group (STWG)
 - Mitigation Working Group (MWG)



Maryland
Department of
the Environment

MCCC - Historical Milestones

- Originated in 2007
- Developed 2008 Maryland “Climate Action Plan”
- Greenhouse Gas Emission Reduction Act of 2009 (GGRA)
- Commission codified into law in 2015
 - Recommended enhancements to the 2009 GGRA in December of 2015
- GGRA of 2016 signed into law in April 2016
- Basic charge of the Commission:
 - Provide recommendations on how to reduce greenhouse gas (GHG) emissions and adapt to the impacts of climate change



Maryland
Department of
the Environment

The Annual Report

- Each year the MCCC is required to submit a report to the Governor and the General Assembly
 - November
- The report should focus on key recommendations to move the State forward to address climate change
 - Efforts to reduce GHG emissions
 - Efforts to adapt and increase resiliency
 - Efforts to communicate and educate around the issue of climate change
 - All supported by a strong technical and scientific effort



Maryland
Department of
the Environment

The Commission's 2015 Report

- Finalized in December of 2015
- Key recommendations included in the MCCC's 2015 report included:
 - The State should develop and implement a plan to achieve a 40% reduction in GHGs by 2030
 - This plan should increase the focus on achieving those GHG reductions in a manner that improves the States economy, creates and protects jobs and protects consumers
 - Any legislation to implement a 40% by 2030 requirement should maintain the framework and safeguards provided in the 2009 GGRA



Maryland
Department of
the Environment

The GGRA of 2016

- Reauthorized and enhanced GGRA of 2016 signed into law on April 4, 2016
- Builds from the recommendations of the MCCC
 - Senator Pinsky and Delegates Stein and Barve sponsored and shepherded identical bills that moved steadily and smoothly through the General Assembly
 - Many other MCCC members played critical roles
- Core elements of new law
 - 40% GHG emission reduction by 2030
 - Must support a healthy economy and create new jobs
 - Maintains structure and safeguards from 2009 law



Maryland
Department of
the Environment

GGRA - A Balanced Approach to Address Climate Change

- The law continues to include a balanced set of requirements and safeguards
 - GHG emission reductions, economic progress, new jobs and more...
- Key safeguards include:
 - Manufacturing sector not covered unless through a federal rule
 - Mid-Course status report from MDE on greenhouse gas (GHG) emission reductions, jobs and the economy
 - Mid-Course reaffirmation of goals by the General Assembly
 - ... or the law sunsets



Maryland
Department of
the Environment

Other Critical Balancing Provisions

- Reauthorized GGRA maintains all of the key issues that are part of the balance that allowed the 2009 and 2016 legislation to pass with support from all interested parties
- For example, the 40 by 30 Plan must:
 - Produce a net economic benefit to the State's economy & a net increase in State jobs
 - Encourage new employment opportunities in the State related to energy conservation, alternative energy supply, and greenhouse gas emissions reduction technologies.
 - Ensure that the plan does not decrease the likelihood of reliable and affordable electric service and statewide fuel supplies



Maryland
Department of
the Environment

More Balance

- The 40 by 30 Plan must also:
 - Not disproportionately impact rural or low-income, low-to-moderate-income, or minority communities or any other particular class of electricity ratepayers
 - Not directly cause the loss of existing jobs in the manufacturing sector
 - Consider the impact on rural communities of any transportation related measures
 - Provide credit for voluntary action
 - Consider whether the measures would result in an increase in electricity costs to consumers in the State
 - Attract, expand and retain aviation services
 - Conserve, protect, and retain agriculture
 - Minimize leakage



Maryland
Department of
the Environment

The Basic 40 by 30 Schedule

- 2016, 2017 and 2018 - MDE, other State agencies, MWG and stakeholders research and build the 40% by 2030 reduction plan
 - Stakeholder meetings across the State
- December 31, 2018 - Draft plan to Governor and General Assembly
- December 31, 2019 - Final plan to Governor and General Assembly
- October 1, 2022 - MDE owes mid-course status report
 - Emission reductions
 - Jobs, the economy ... more
- October 1, 2022 – Manufacturing study due
- December 1, 2023 – Law terminates if not reauthorized



The 2016 MCCC Report

A Preview of Potential Recommendations

- Progress on adaptation and resilience
 - Matt Fleming (DNR) - ARWG Lead
- Furthering education, communications, and outreach efforts
 - Lori Arguelles (Alice Ferguson Foundation) - ECO Working Group lead
- Emerging science and technical issues
 - Don Boesch (UMCES) - STWG Lead
- Making progress in reducing GHG emissions and complying with the GGRA
 - Tad Aburn (MDE) - MWG Lead



Maryland
Department of
the Environment

Questions?



Maryland
Department of
the Environment