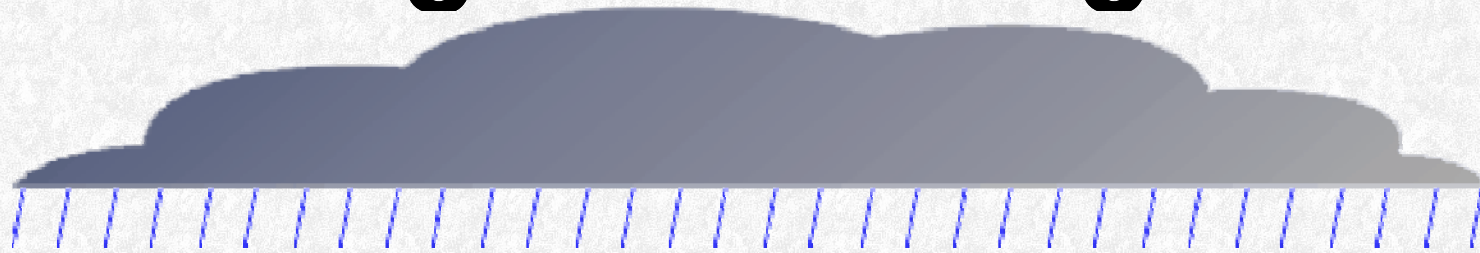




Maryland's Stormwater Management Program



Stormwater Management Act of 2007 Update





Stormwater Management Act of 2007

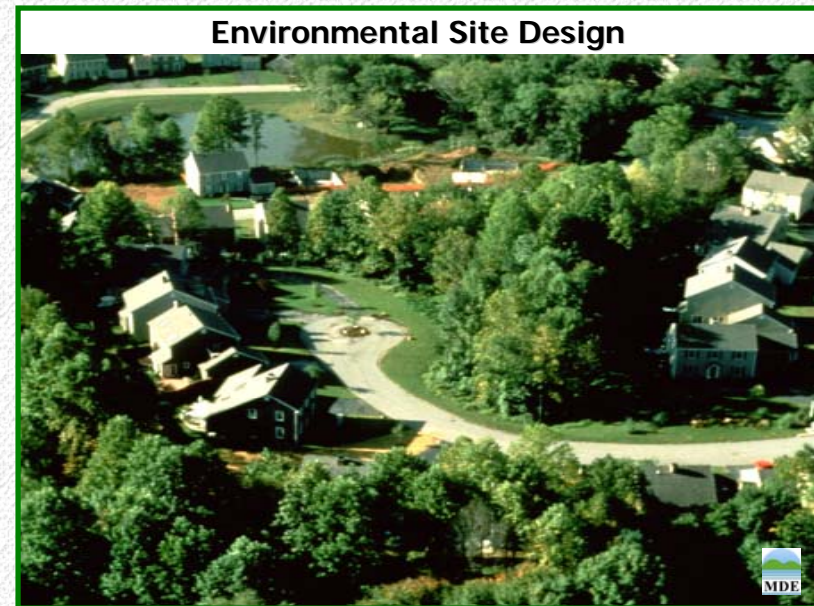
- **Requires implementation of Environmental Site Design (ESD) to the maximum extent practicable**
- **ESD: “using small-scale stormwater management practices, nonstructural techniques, and better site planning to mimic natural hydrologic runoff characteristics and minimize the impact of land development on water resources”**





Guiding Principles

1. **Maintain after development, as nearly as possible, the predevelopment runoff characteristics**
2. **Minimize the generation of stormwater and maximize pervious areas for stormwater treatment**



Design Process for Redevelopment

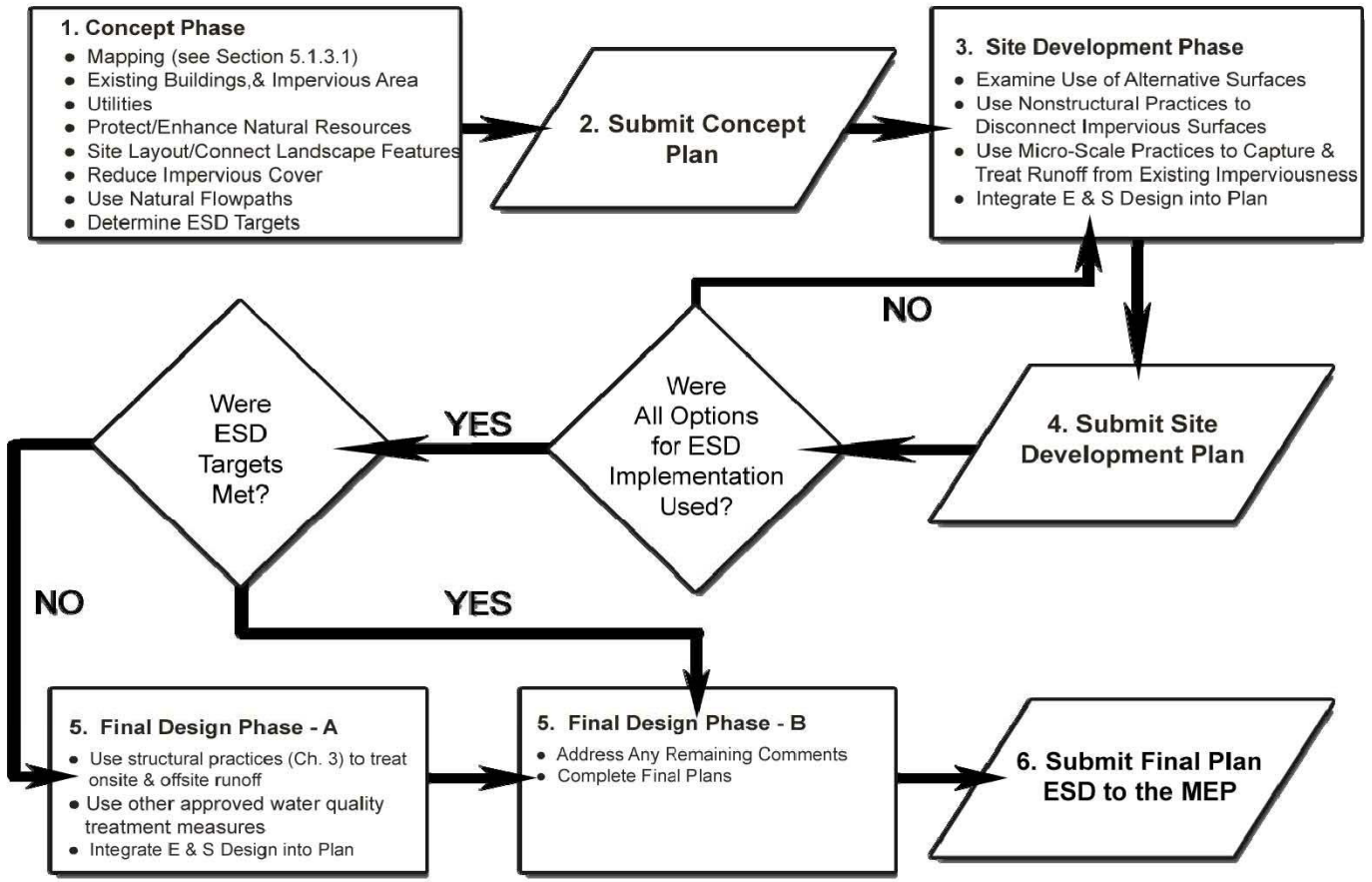


Figure 5.21 Design Process for Redevelopment

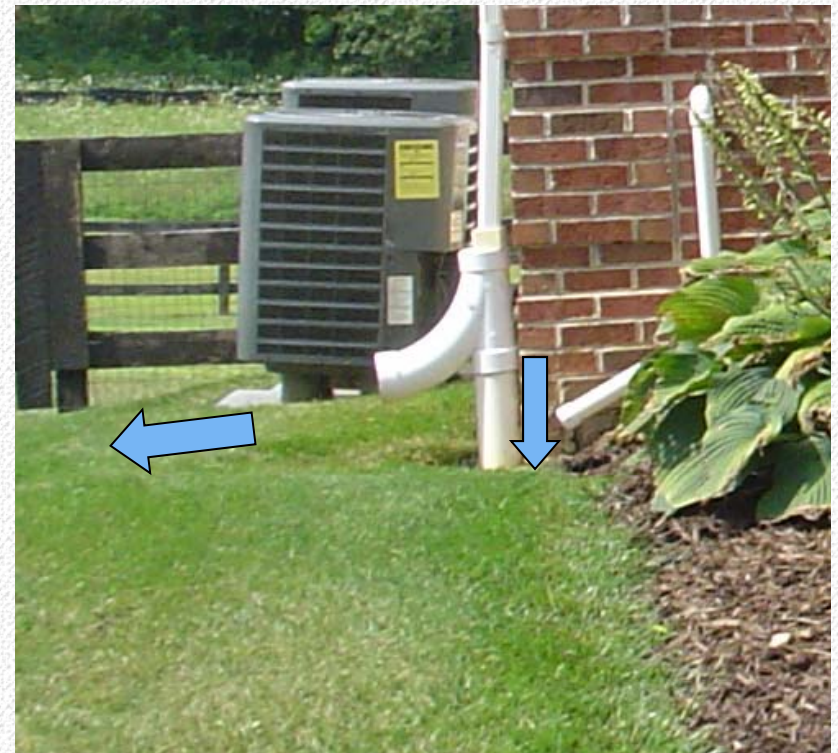


Alternative Surfaces





Rooftop Disconnect





Non-Structural Practices





ESD to the MEP Site Design





ESD to the MEP Site Design



North Bay Environmental Education Camp

Redevelopment in Cecil County



06/02/2008 11:58 AM



06/02/2008 11:58 AM



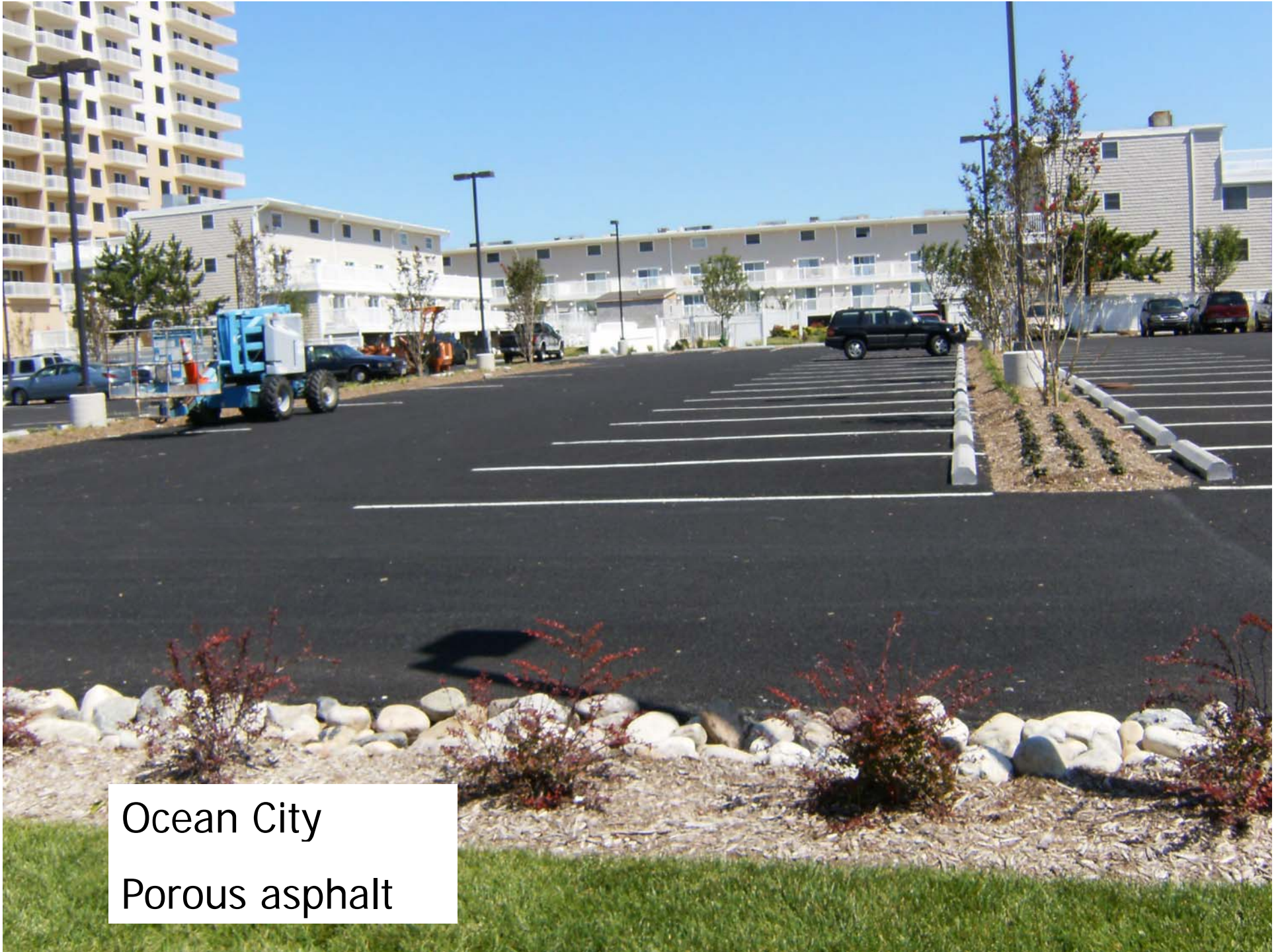
Redevelopment Policy

- **Provide greater water quality treatment**
- **Flexibility and options to integrate local priorities into watershed specific goals.**
- **Redevelopment is encouraged by reduced requirements compared to new development**



University of Maryland School of Nursing





Ocean City

Porous asphalt



Gateway Grande Redevelopment, Ocean City





Off-Site Stormwater Management



Baltimore City School Retrofits:
Impervious area reduction
Rooftop disconnection to rain garden





MDE Example for New Development





Alternative Stormwater Management Measures



**Martin Plaza
Redevelopment**

**Baltimore County and
Martin Financial Assoc.**

Public – Private Partnership

**WQ treatment of 85 acres
of existing impervious**





ESD to the MEP!



- **Continue working with localities;**
- **Education and outreach – Design Examples;**
- **Questions call 410-537-3543**



Updates are available on MDE's Website:

<http://www.mde.state.md.us>

