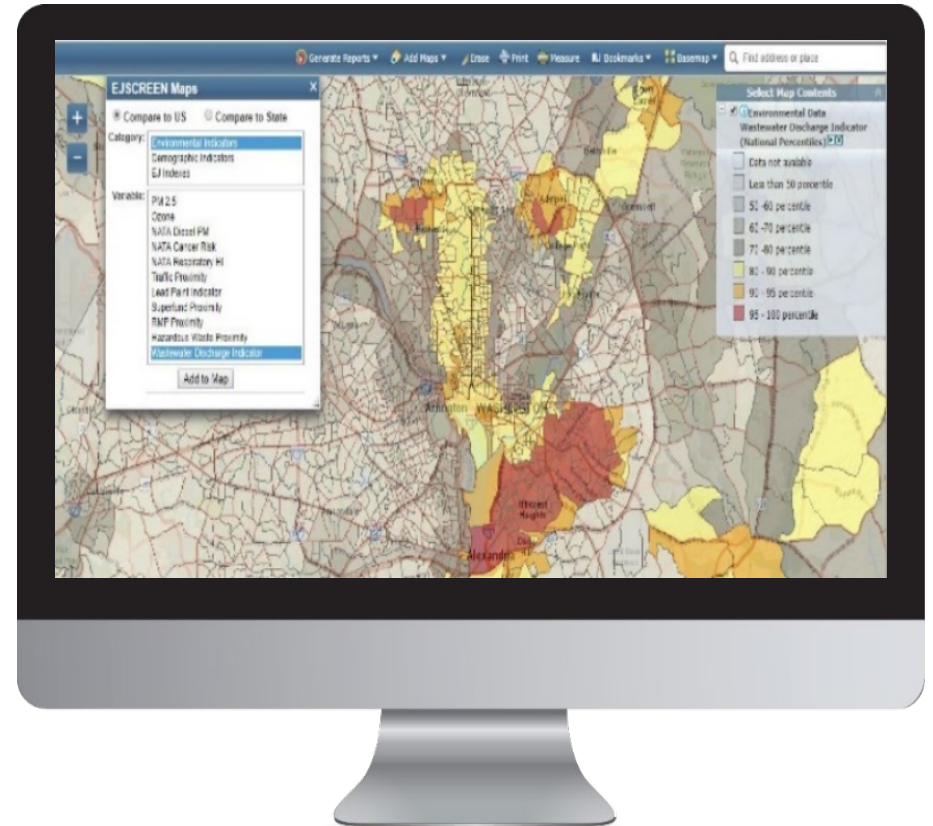


# EJSCREEN EPA's Environmental Justice Screening Tool



# What is EJSCREEN?

- EPA's web-based GIS tool for nationally consistent EJ screening and mapping
- Combines environmental and demographic data to highlight areas where **vulnerable populations** may be **disproportionately impacted** by pollution



# Caveats & Limitations

---

EJSCREEN does not cover all environmental or EJ issues

---

Environmental indicators are mostly screening-level proxies for actual exposure or risk

---

Indicators vary in vintage

---

Census data has limitations and can obscure small communities

---

Results should be verified on the ground when possible

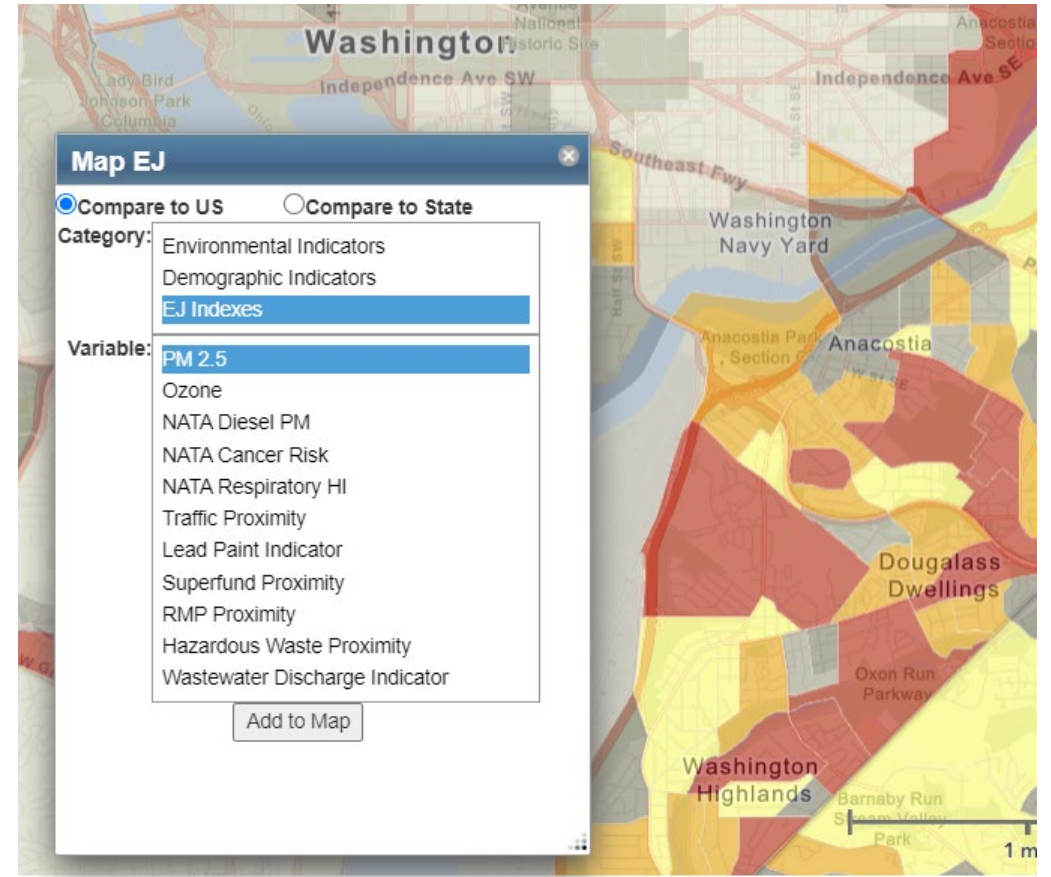
---

**EJSCREEN does not identify EJ communities**

\*It helps identify areas that may have **higher pollution burdens** and **vulnerable populations** present.

# EJSCREEN Key Features

- 11 EJ Indexes – one for each environmental indicator
- Annually updated environmental data
- Annually updated demographics – from most recent U.S. Census Bureau American Community Survey (ACS)
- Highest resolution data available
- Ability to download data
- Accessibility / ease of use





# UNITS OF ANALYSIS



United States



State

primary governmental divisions of the United States.



County

Largest divisions within states.



Census Tract

Collection of Census block groups, mostly between 1,200 and 8,000 people.



Block Group

Collection of residential blocks, mostly, between 600 and 3,000 people.



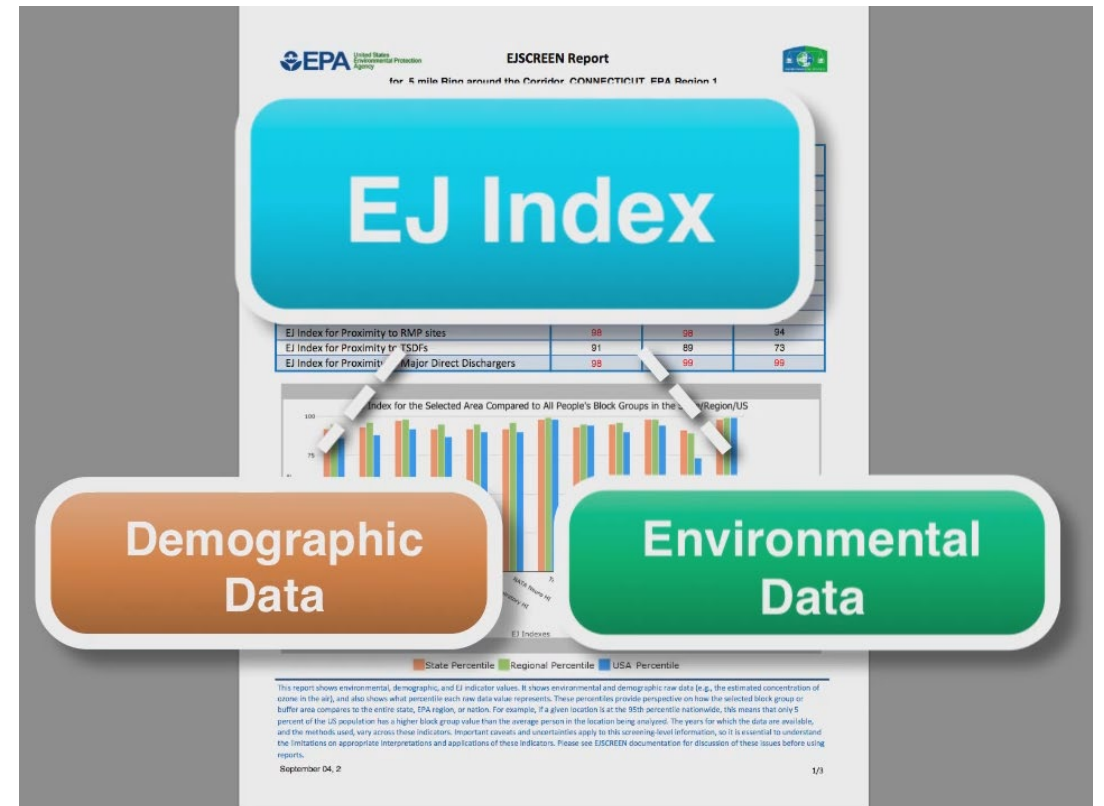
Block

Residential block, bounded on all sides by streets.



# Types of Data in EJSCREEN

- Primary EJSCREEN Datasets
  - Demographic (6 indicators)
  - Environmental (11 indicators)
  - EJ Indexes (11 indicators)
- Additional Environmental Data
- Additional Demographic Data
- Other Data Sources



# Demographic Indicators

Indicator	Definition
Low-Income	Household's income is less than or equal to twice the federal "poverty level"
Minority (People of color)	Individuals who list their racial status as a race other than white alone and/or list their ethnicity as Hispanic or Latino
Less than high school education	People age 25 or older whose education is short of a high school diploma
Linguistic isolation	Households in which all members age 14 years speak English less than "very well" (have difficulty with English)
Individuals under age 5	People in a block group under the age of 5
Individuals over age 64	People in a block group over the age of 64
Demographic index	$(\text{Low income} + \text{minority}) / 2$

\*Note: All demographic datasets are from the 2013 – 2017 Census ACS

# Environmental Indicators

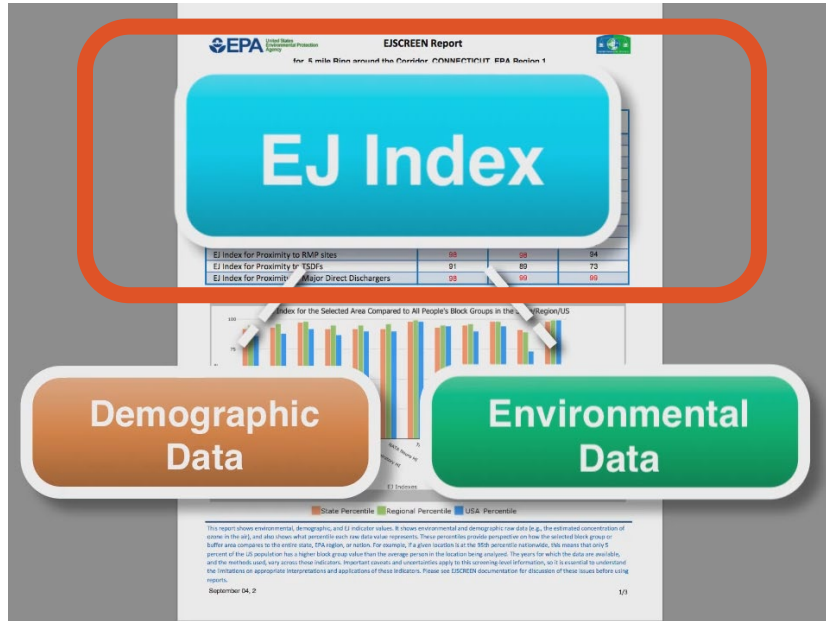
Indicator	Description	Year
NATA cancer risk	Lifetime cancer risk from inhalation of air toxics	2014
NATA respiratory hazard index	Air toxics respiratory hazard index (ratio of exposure concentration to health-based reference concentration)	2014
NATA diesel particulate matter	Diesel particulate matter level in air	2014
Particulate matter 2.5	Annual average of PM 2.5 levels in the air	2016
Ozone	Ozone summer seasonal avg. of daily maximum	2016
Traffic proximity and volume	Count of vehicles on major roads, divided by distance in meters	2017



# Environmental Indicators (cont'd)

Indicator	Description	Year
Lead paint indicator	Percent of housing units built pre-1960, as indicator of potential lead paint exposure	2013 - 2017
Proximity to Risk Management Plan sites	Count of RMP (potential chemical accident management plan) facilities within 5 km, each divided by distance in kilometers	2019
Proximity to Hazardous Waste Facilities	Count of hazardous waste facilities (TSDFs and LQGs) within 5 km, each divided by distance in kilometers	2019
Proximity to National Priorities List sites	Count of proposed or listed NPL - also known as Superfund - sites within 5 km, each divided by distance in kilometers	2019
Wastewater Discharge Indicator	RSEI modeled Toxic Concentrations at stream segments within 500 meters, divided by distance in kilometers	2019

# What does the EJ Index mean?



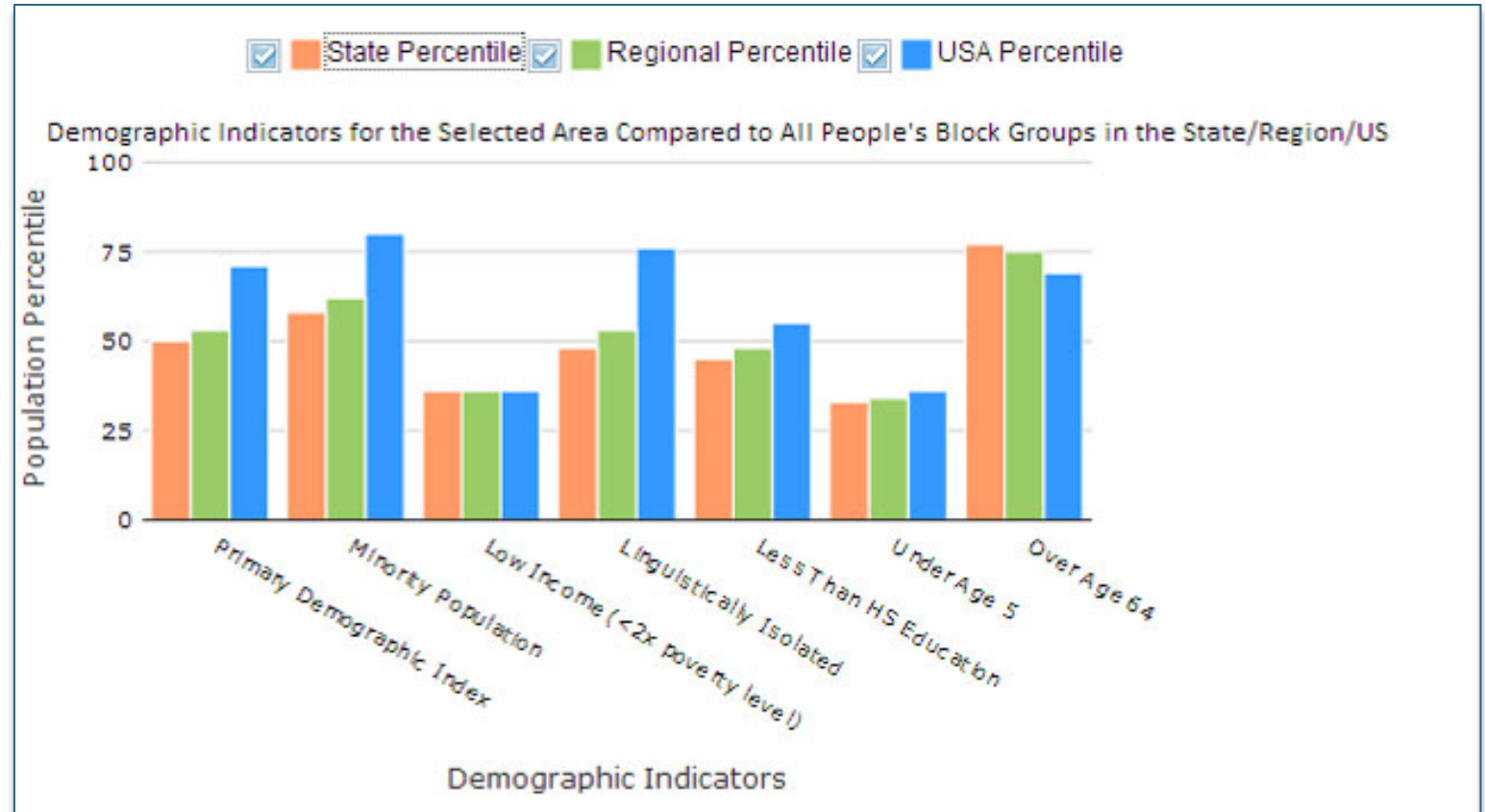
It helps identify areas that may have **higher pollution burdens** and **vulnerable populations** present

EJ Index  
Calculation:

$$\begin{aligned} & \text{One Environmental Indicator} \\ & \times (\text{Demographic Index} - \text{US Average Demographic Index}) \\ & \times \frac{\text{Block Group Population}}{\text{EJ Index for Given Environmental Indicator}} \end{aligned}$$

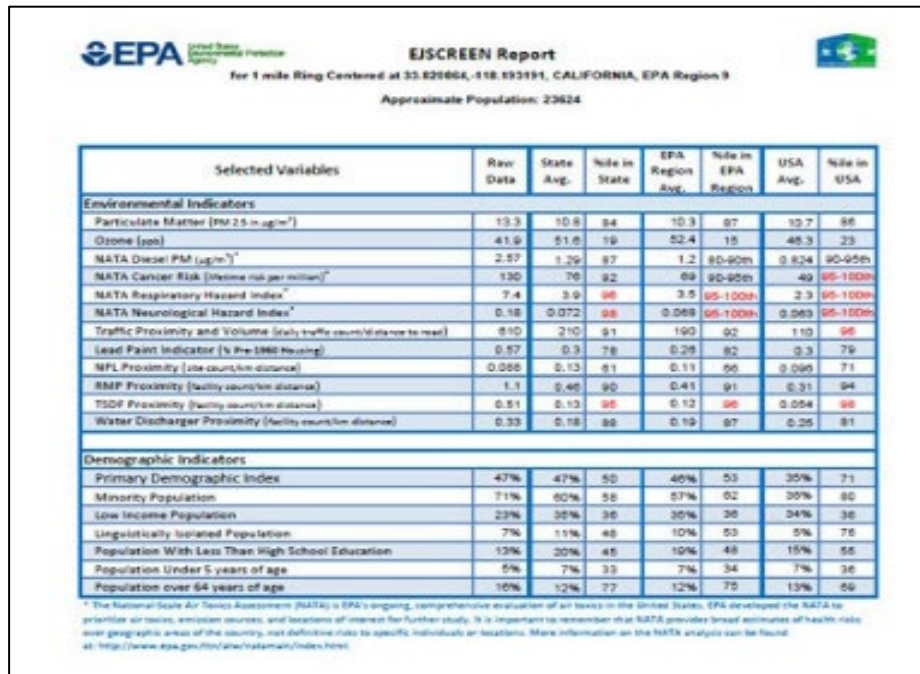
# Results are Ranked as Percentiles

- Percentiles put indicators into common units of 0 – 100.
- A place at the 80th percentile nationwide means 20% of the US population has a higher value.



# Viewing EJSCREEN Data

You can view all of the indicators in EJSCREEN within reports or on maps.

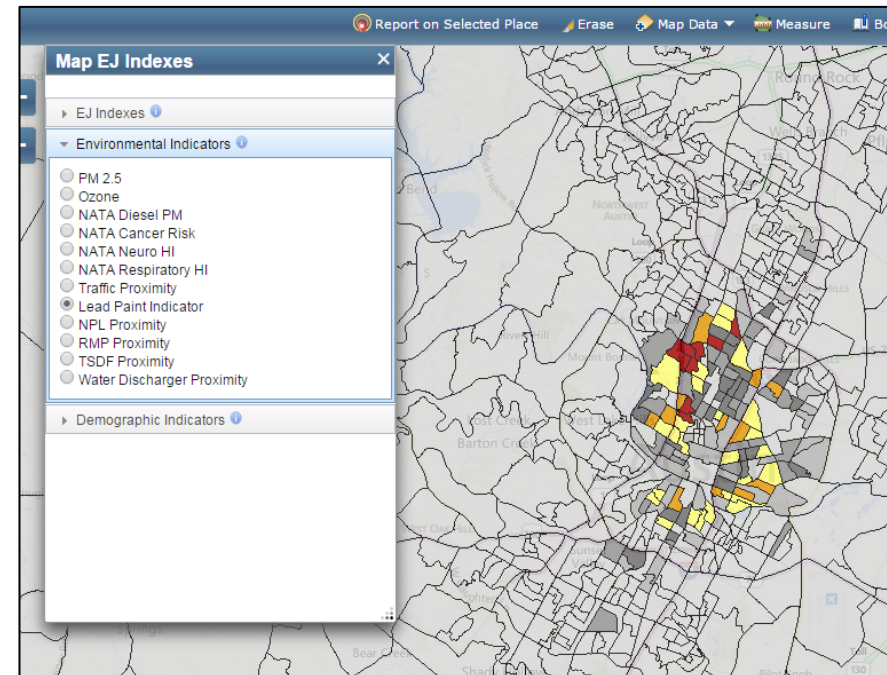


**EJSCREEN Report**  
for 1 mile Ring Centered at 33.828864, -118.591911, CALIFORNIA, EPA Region 9  
Approximate Population: 23624

Selected Variables	Raw Data	State Avg.	% in State	EPA Region Avg.	% in EPA Region	USA Avg.	% in USA
<b>Environmental Indicators</b>							
Particulate Matter (PM 2.5 in $\mu\text{g}/\text{m}^3$ )	13.3	10.8	94	10.3	97	12.7	86
Ozone (ppb)	41.9	51.8	19	52.4	15	48.3	23
NATA Diesel PM ( $\mu\text{g}/\text{m}^3$ ) <sup>*</sup>	2.57	1.29	97	1.2	90-95th	0.824	90-95th
NATA Cancer Risk (lifetime risk per million) <sup>*</sup>	130	70	92	69	90-95th	49	95-100th
NATA Respiratory Hazard Index <sup>*</sup>	7.4	3.9	98	3.5	95-100th	2.3	95-100th
NATA Neurological Hazard Index <sup>*</sup>	0.18	0.072	98	0.068	95-100th	0.063	95-100th
Traffic Proximity and Volume (daily traffic count/distance to road)	810	210	91	190	92	110	98
Lead Paint Indicator (% Pre-1980 Housing)	0.97	0.3	78	0.29	92	0.3	79
NPL Proximity (site count/mi distance)	0.088	0.13	61	0.11	66	0.085	71
RMP Proximity (facility count/mi distance)	1.1	0.46	90	0.41	91	0.31	94
TSDF Proximity (facility count/mi distance)	0.51	0.13	98	0.12	98	0.054	98
Water Discharger Proximity (facility count/mi distance)	0.33	0.18	88	0.19	97	0.25	81
<b>Demographic Indicators</b>							
Primary Demographic Index	47%	47%	50	46%	53	35%	71
Minority Population	71%	60%	58	67%	62	30%	80
Low Income Population	23%	35%	36	35%	38	34%	38
Linguistically Isolated Population	7%	11%	48	10%	53	5%	76
Population With Less Than High School Education	13%	20%	48	10%	48	15%	58
Population Under 5 years of age	5%	7%	33	7%	34	7%	36
Population over 64 years of age	16%	12%	77	12%	75	13%	69

\* The National Scale Air Toxics Assessment (NATA) is EPA's ongoing, comprehensive evaluation of air toxics in the United States. EPA developed the NATA to prioritize air toxics, emission sources, and locations of interest for further study. It is important to remember that NATA provides broad estimates of health risks over geographic areas of the country, not definitive risks to specific individuals or locations. More information on the NATA study can be found at: <http://www.epa.gov/tna/airtoxics/index.html>.

A standard report gives you all the indicators at once for a single specified location



A map gives you one indicator at a time, for each of the block groups within a wider area (e.g. across several miles)



# New EJSCREEN Features



Improved data dictionary for EJSCREEN downloads



Ability to bring in shape files



Downloadable data at the tract level



Improved source data on locations such as Superfund sites



RSEI data as an available map layer

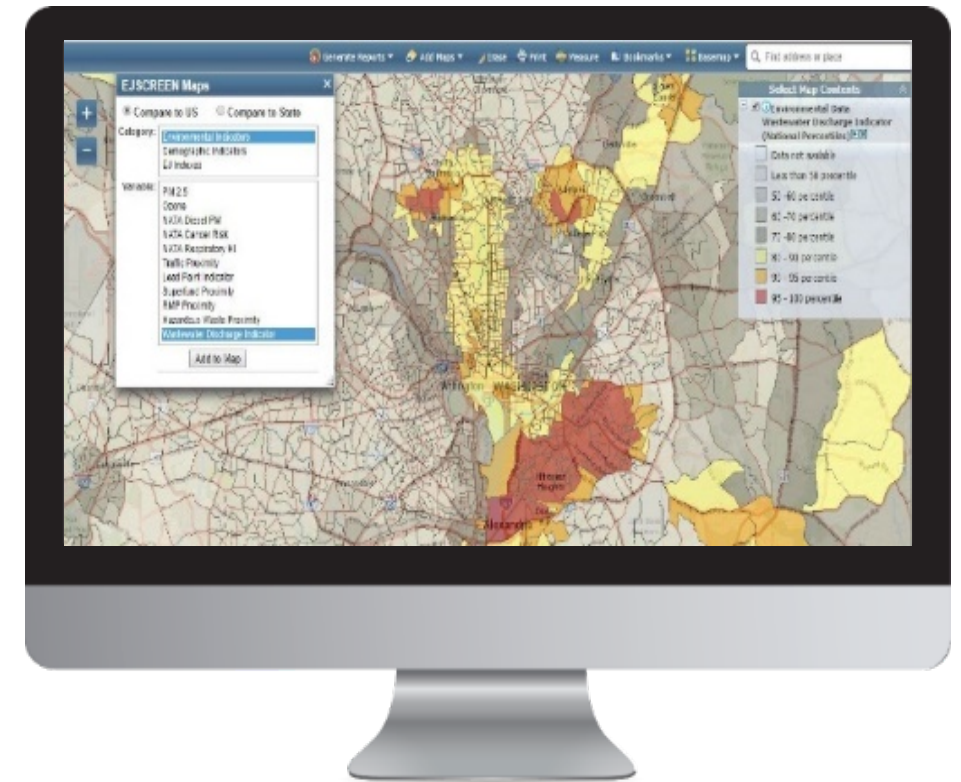


Climate related indicators

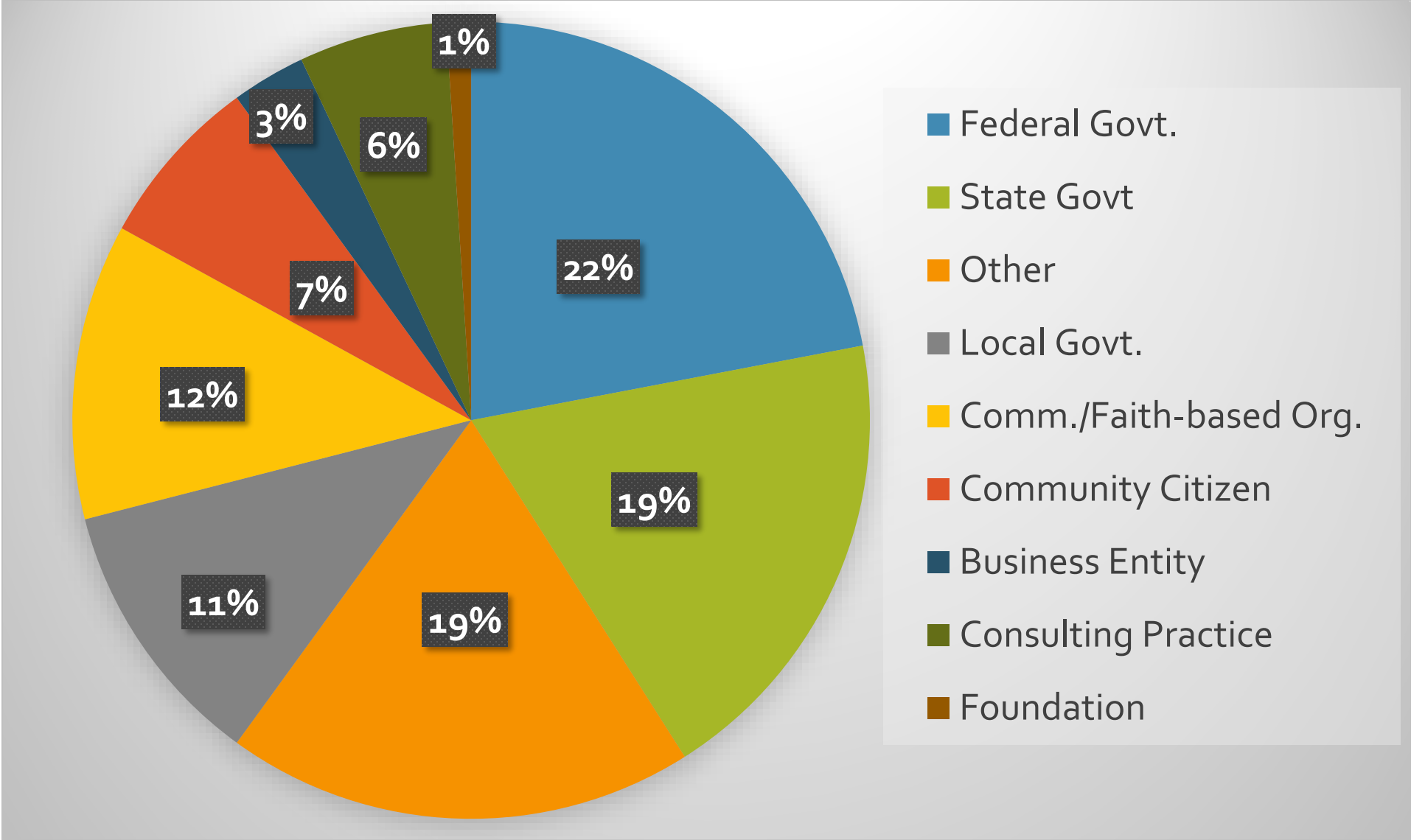
# EJSCREEN in Action at EPA

EPA uses EJSCREEN in the following ways:

- for public outreach and engagement
- enforcement targeting
- inclusion in inspection reports
- permitting and NEPA reviews
- reviews of grant projects
- other placed-based initiatives
- inclusion in CCDS/ICIS
- retrospective reporting



# Who is using EJSCREEN?



# EJSCREEN: External Uses



- **Federal Government:**
  - DOT, ACE, FEMA, and others use in their programs
- **State Governments:**
  - Many states are building their own EJ tools based on EJSCREEN
  - This allows them to incorporate state specific information and other datasets
- **Local and Tribal Governments:**
  - Use to implement environmental programs and regulations
  - Rely on EJSCREEN data as they often don't have the resources to build their own tools



# Questions?

## Contact Information

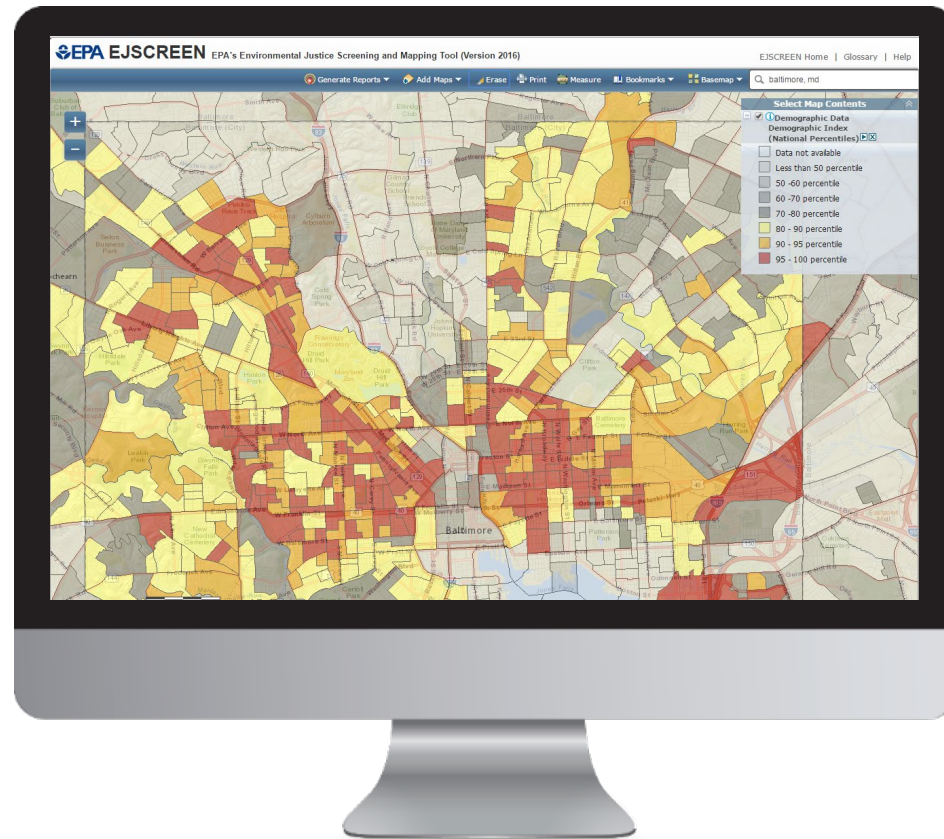
Matthew T. Lee

Office of Communities, Tribes and Environmental Assessment (OCTEA)

U.S. EPA Region 3

Lee.Matthew@epa.gov

# LIVE DEMO



*Click to access EJSCREEN Tool*