



**PROPOSED MODIFICATIONS TO PRIVATE  
SUPPLY WELL SAMPLING PROGRAM rev1  
INACTIVE EXXON FACILITY #28077  
14258 JARRETTSVILLE, MARYLAND 21131  
MDE CASE NO. 2006-0303-BA2  
MDE FACILITY I.D. NO. 12342**

**December 8, 2017**

**All Rights Reserved**

**ONLY THE CLIENT OR ITS DESIGNATED REPRESENTATIVES MAY USE THIS DOCUMENT AND ONLY FOR THE SPECIFIC PROJECT FOR WHICH THIS REPORT WAS PREPARED.**



A Work Plan Prepared for:

Mr. Christopher Ralston  
Maryland Department of the Environment  
Remediation Division, Oil Control Program  
1800 Washington Boulevard, Suite 620  
Baltimore, Maryland 21230

**PROPOSED MODIFICATIONS TO PRIVATE SUPPLY WELL SAMPLING PROGRAM rev1**  
**FORMER EXXON FACILITY #28077**  
**14258 JARRETTVILLE PIKE, PHOENIX, MD 21131**  
**MDE CASE NO. 2006-0303-BA2**  
**MDE FACILITY I.D. NO. 12342**

Kleinfelder Project Number: 20163496.001A

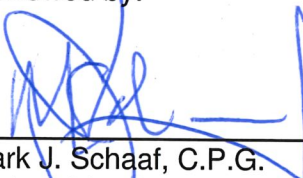
Prepared by:



---

Stacey Schiding  
Project Manager

Reviewed by:



---

Mark J. Schaaf, C.P.G.  
Project Director

**KLEINFELDER**  
1340 Charwood Road, Suite I  
Hanover, MD 21076  
Phone: 410.850.0404  
Fax: 410.850.0049

**TABLE OF CONTENTS**

---

<u>Section</u>	<u>Page</u>
<b>TABLE OF CONTENTS .....</b>	<b>ii</b>
<b>1 INTRODUCTION.....</b>	<b>1</b>
<b>2 PRIVATE SUPPLY WELL SAMPLING PROGRAM.....</b>	<b>2</b>
2.1 PROPOSED MODIFICATIONS TO PRIVATE SUPPLY WELL SAMPLING PROGRAM .....	2
2.2 SUPPORT FOR MODIFICATIONS TO CURRENT SAMPLING PROGRAM .....	3
2.2.1 PSWs with gasoline constituents above standard.....	4
2.2.2 PSWs with gasoline constituents above 50% of standard.....	4
2.2.3 Properties with gasoline constituents above 10% of standard .....	7
2.3 DEEP MONITORING WELL NETWORK .....	8
<b>3 POINT OF ENTRY TREATMENT (POET) SYSTEMS.....</b>	<b>10</b>
3.1 POET HISTORY .....	10
3.2 POET REMOVAL / OWNERSHIP CONVEYANCE .....	12
<b>4 CONCLUSION .....</b>	<b>14</b>

## **TABLES**

- 1 Current Private Supply Well Sampling Frequency
- 2 Proposed Private Supply Well Sampling Frequency

## **FIGURES**

- 1 Current PSW Frequency
- 2 Criteria for Retention in PSW Sampling Program
- 3 Proposed Modified PSW Sampling Program

## **APPENDICES**

- A Historical Analytical Tables for Properties Proposed for Retention – January 2010-December 2015
- B Historical Analytical Tables for Properties Proposed for Discontinuation – January 2010-December 2015
- C Draft POET Keep/Remove Letter and Form

**PROPOSED MODIFICATIONS TO PRIVATE SUPPLY WELL SAMPLING PROGRAM rev1  
INACTIVE EXXON FACILITY #28077  
14258 JARRETTSVILLE, MARYLAND 21131  
MDE CASE NO. 2006-0303-BA2  
MDE FACILITY I.D. NO. 12342**

**1 INTRODUCTION**

---

For the past ten years, ExxonMobil has been conducting investigation and remediation activities in response to the February 2006 discovery of a release of gasoline from an underground storage tank system at the former Exxon service station #28077 on Jarrettsville Pike. As part of this investigation, ExxonMobil has conducted a private supply well (PSW) sampling program to monitor water quality in supply wells in the vicinity of the Site. Currently 258 PSWs are sampled regularly – 45 are sampled monthly, 86 are sampled quarterly and 127 are sampled semi-annually (listed on **Table 1** and depicted on **Figure 1**). After a decade of investigation, remediation and monitoring of groundwater conditions, the data support modifications to the current private supply well sampling program.

Based on the overall investigation and remediation, and supported by the PSW data presented herein, ExxonMobil proposes the following:

- 1) Discontinuation of sampling for all supply wells currently sampled semi-annually;
- 2) Discontinuation of sampling for all but 11 of the supply wells currently sampled quarterly;
- 3) Discontinuation of sampling for all but 27 of the supply wells currently sampled monthly;
- 4) Frequency adjustments to sampling for supply wells to be retained in the program;
- 5) Removal or conveyance of ownership for 5 of the 14 point of entry treatment (POET) systems currently maintained by ExxonMobil.

## 2 PRIVATE SUPPLY WELL SAMPLING PROGRAM

---

Since 2006, more than 270 PSWs surrounding the former service station have been sampled. Private supply well sampling was initiated in February 2006 in the immediate vicinity of the station property. Based on the findings of the investigation and at the direction of the MDE, PSW sampling was expanded to include additional properties within an approximate ½ mile radius of the Site. The current sampling program, with minor adjustments, has remained essentially unchanged for the last ten years. Historical analytical results from January 2010 through December 2015 for all properties in the sampling program are included as **Appendices A and B**.

### 2.1 PROPOSED MODIFICATIONS TO PRIVATE SUPPLY WELL SAMPLING PROGRAM

As discussed with the MDE in December 2015, ExxonMobil proposes to scale back the private supply well sampling program to include only the 35 properties (**Appendix A**) that meet one or more of the following criteria as shown on **Figure 2** and in embedded graphics below.

- Detections since January 2013 above 10% of standard for benzene, toluene, ethylbenzene, and xylenes (BTEX); five fuel oxygenates (Oxy5) including methyl tertiary butyl ether (MTBE), diisopropyl ether (DIPE), ethyl tertiary butyl ether (ETBE), tert-amyl methyl ether (TAME), and tert-butyl alcohol (TBA); or naphthalene;
- Historical detections of liquid petroleum hydrocarbons (LPH) in monitoring wells (not observed since 2008);
- Active recovery or monitoring wells installed on the property.

Based on the data presented below, ExxonMobil proposes a modified supply well sampling program to include the following elements, illustrated on **Figure 3**:

1. Continued monthly sampling of the supply well at 3627A Southside Avenue (the only supply well above standard for BTEX, Oxy5 or naphthalene);
2. Quarterly sampling of 14 properties that meet one or more of the following criteria:
  - a. Detections of BTEX, Oxy5, or naphthalene greater than 10% of standard since January 2013, not including properties with a likely alternate source;
  - b. Historical liquid petroleum hydrocarbon (LPH) detections in monitoring wells installed on the property;
  - c. Properties with active recovery wells installed;

- d. One property (3635 Southside Avenue) adjacent to 3627A Southside Avenue which has displayed a very low-level increasing trend of MTBE.
3. Semi-annual sampling of 21 properties with monitoring wells installed and which do not meet one of the criteria above for quarterly sampling.

The following would be eliminated from the PSW sampling program (**Appendix B**):

1. All properties currently sampled on a semi-annual basis (**Figure 1**). All semi-annual properties have been below 10% of the standard for BTEX, Oxy5 or naphthalene since at least January 2013, with a few exceptions that are likely attributable to alternate sources. As MDE stated of the semi-annual properties in a letter dated February 1, 2010.

*“The Department finds that the sampling history demonstrates that these 130 properties have not been impacted by the ExxonMobil release to a point that nears action level for State and Federal drinking water standards. The properties have the benefit of being forewarned of future impacts above action levels by the placement and sampling of a specifically-designed monitoring well network...Further, effective investigation and remediation have been implemented that is controlling and reducing impacts to the groundwater.”*

2. All but 11 properties currently sampled on a quarterly basis. All properties proposed for elimination have been below 10% of the standard for BTEX, Oxy5 and naphthalene since at least January 2013.
3. All but 27 properties currently sampled on a monthly basis. All properties proposed for elimination have been below 10% of the standard for BTEX, Oxy5 and naphthalene since at least January 2013.

## 2.2 SUPPORT FOR MODIFICATIONS TO CURRENT SAMPLING PROGRAM

The MDE has established standards and action levels for PSWs that it applies on a state-wide basis. These standards establish the levels which the MDE has determined to be safe for drinking water. The MDE has established a 20 µg/L action level for MTBE based on an aesthetic condition (i.e., taste and odor), but has also determined that this 20 µg/L action level provides a large margin

of safety from potential toxic effects. Thus, according to MDE, the 20 µg/L standard for MTBE is conservatively protective of potential human health concerns. As discussed below, only one supply well sampled on behalf of ExxonMobil currently has had detections of gasoline constituents above standard since June 2011 (3627A Southside Avenue).

#### 2.2.1 PSWs with gasoline constituents above standard

Currently 258 private supply wells are sampled on a regular schedule. Throughout the PSW sampling program, the vast majority of supply wells sampled have not exhibited methyl tertiary butyl ether (MTBE) above 1 µg/L and only 14 out of more than 270 supply wells sampled since the start of the project in 2006 have ever had detections of MTBE above the MDE standard of 20 µg/L.

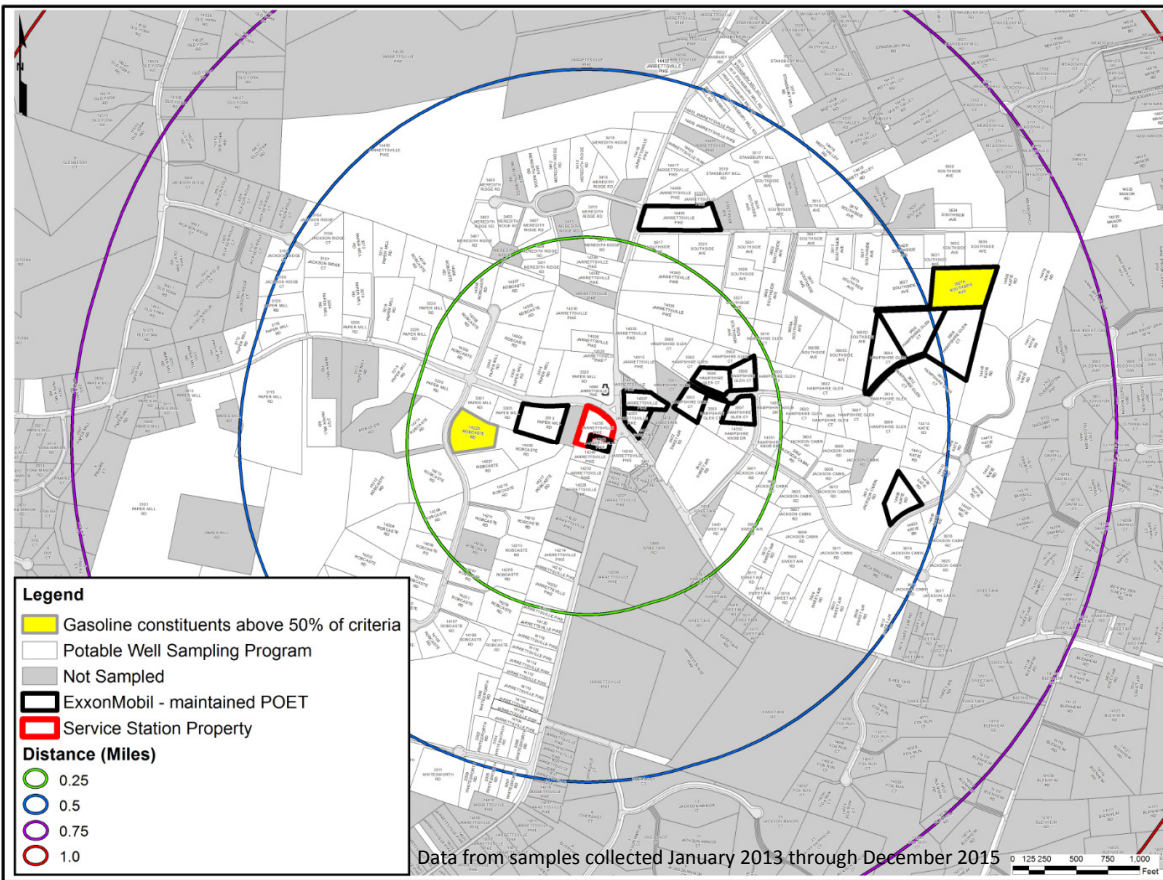
Over the past five years from January 2010 through December 2015, only two supply wells sampled on behalf of ExxonMobil had detections of BTEX, five fuel oxygenates including MtBE or naphthalene above standard (3627A Southside Avenue and 14307 Jarrettsville Pike). Subsequently, the supply well at 14307 Jarrettsville Pike has been below standard since June 2011.

#### 2.2.2 PSWs with gasoline constituents above 50% of standard

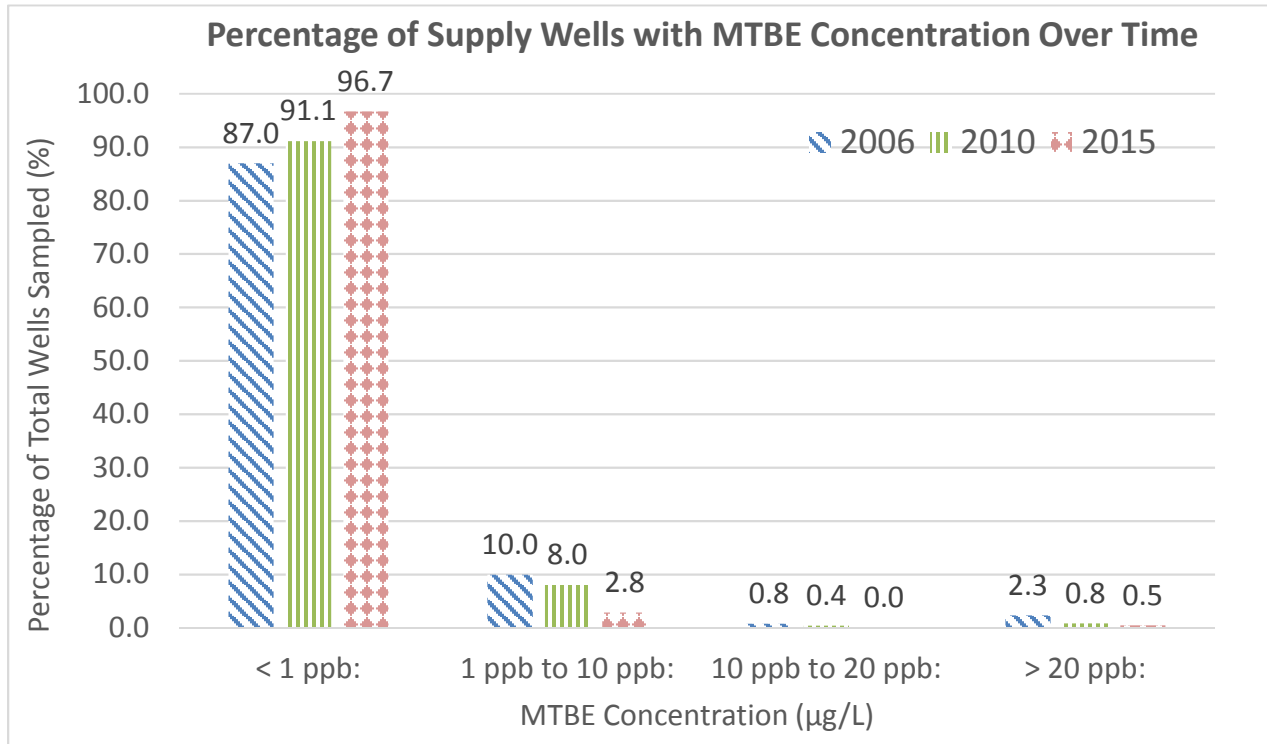
Since January 2013, only one supply well (3627A Southside Avenue) has exhibited gasoline constituents above standard, and only one other supply well has had detections of gasoline constituents above half of the standard (a single detection of naphthalene at 14225 Robcaste Road in April 2014, which is unlikely related to the 2006 gasoline release).



## PRIVATE SUPPLY WELLS WITH GASOLINE CONSTITUENTS >50% OF STANDARD



The percentage of private supply wells with MTBE above standard (20 µg/L), above 50% of standard (10 µg/L), and above 1 µg/L have decreased over time (see chart below), while the percentage of private supply wells with MTBE below 1 µg/L has increased over time. As of the end of 2015, almost 97% of supply wells sampled had benzene between ND and 1 µg/L.

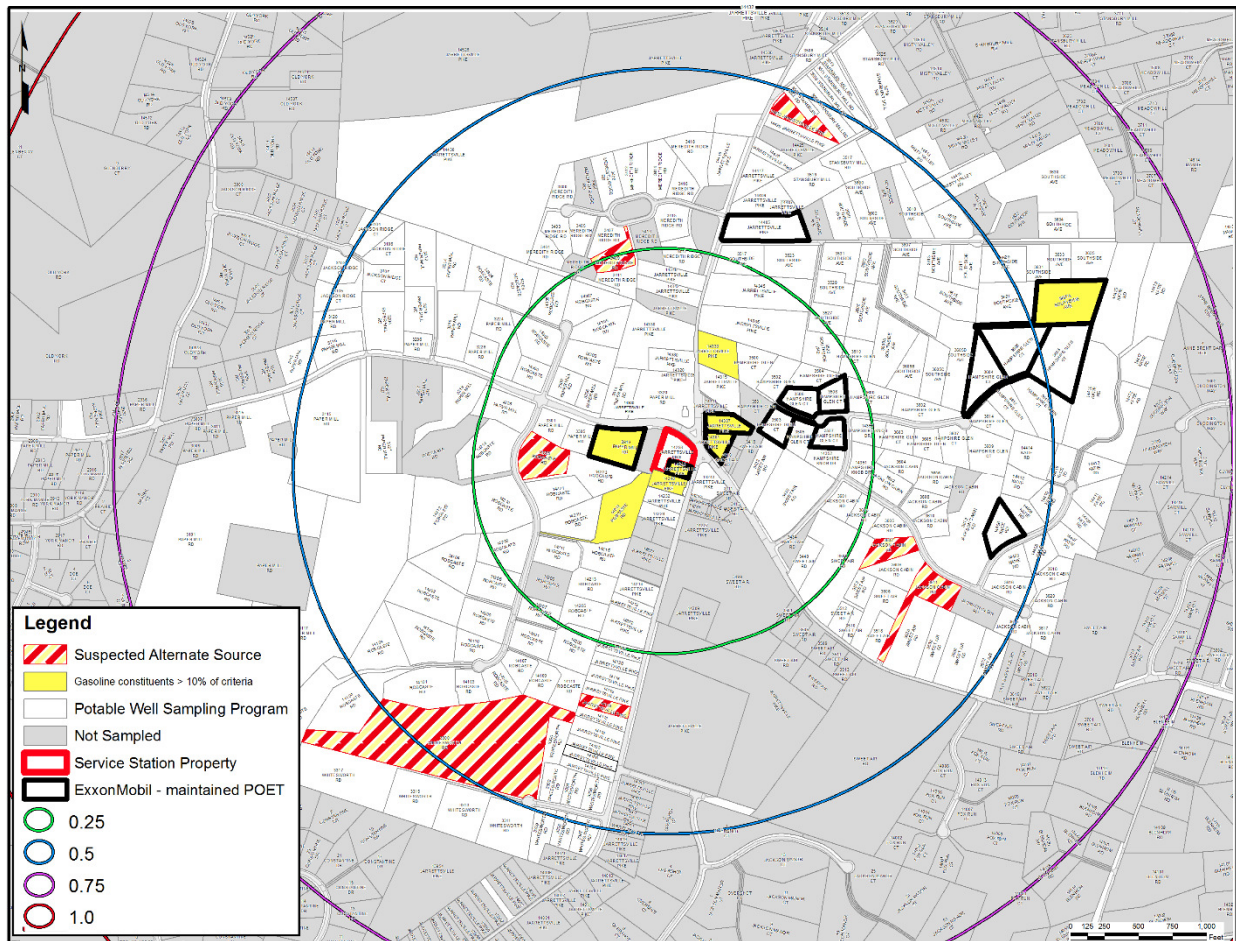


### 2.2.3 Properties with gasoline constituents above 10% of standard

Of the nearly 4,100 private supply well samples collected between January 2013 and December 2015, 3,994 of them were ND for gasoline constituents BTEX, Oxy-5 and naphthalene.

In fact, as of December 31, 2015, only 15 properties had supply wells with detections of gasoline constituents greater than 10% of the standard, seven of which are likely attributable to other sources.

#### PRIVATE SUPPLY WELLS WITH GASOLINE CONSTITUENTS >10% OF STANDARD



Data from samples collected January 2013 through December 2015

## 2.3 DEEP MONITORING WELL NETWORK

In addition to the statistics presented above, the existence of a deep monitoring well network across the project footprint lends support to a reduction of private supply well sampling. When depths and locations for monitoring wells were being selected and approved starting in 2006, the depth and construction of supply wells in the area was taken into consideration. When the monitoring well network was being expanded in late 2006, several wells were proposed (MW-92C, MW-131C, MW-133C), with depths set specifically to match the depths of private supply wells or to match open intervals of area supply wells.<sup>1</sup>

- MW-92C (400' deep) – depth based on private supply well depths in vicinity
- MW-131C (300' deep) – depth based on private supply well depths in vicinity

MDE's response to the expanded monitoring well network plan was to require an additional 25 wells be installed, several specifically targeted at mimicking the private supply well depths in the area<sup>2</sup>, of which the following were ultimately installed.

- MW-135C (300' deep) – Depth based on area domestic well depths
- MW-162C (300' deep) – Depth reflects nearby domestic wells
- MW-93C (300' deep) – Depth reflects nearby domestic well depths
- MW-165C (450' deep) – Intended as sentinel monitoring of deeper zone set at a depth that coincides with nearby domestic well depths
- MW-173C (500' deep) – Depth of C well reflects nearby domestic well depths
- MW-128C (400' deep) – Supplement wells MW-128A and MW-128B and monitor deeper zone at depth based on nearby domestic well depth

Two wells MDE originally required (MDE-12C and MDE-10C) were ultimately replaced in the sampling program by the unused supply wells at 14209 Robcaste Road and 3418 Sweet Air Road respectively.

An additional inner and outer array of deep D-zone wells was installed in 2014 to further expand the ability to monitor groundwater at depths greater than 350' below ground surface (bgs), similar to the depths of area supply wells.

---

<sup>1</sup> MW Network Proposed Plan, September 25, 2009

<sup>2</sup> MDE, December 15, 2006, Monitoring Well Network, Case No.2006-0303-BA2, Jacksonville Exxon R/S No. 2-8077, 14258 Jarrettsville Pike, Phoenix, Baltimore County, Maryland, Facility I.D. No. 12342  
20173385.001A-HAN17P70123rev1



In summary, the PSW analytical data collected over the last decade, combined with the extensive monitoring well network in place, support a reduction in the PSW sampling program to eliminate sampling of properties that have been well below MDE's conservative drinking water standards for years.

### 3 POINT OF ENTRY TREATMENT (POET) SYSTEMS

---

ExxonMobil currently maintains 14 POET systems within 0.75 miles of the former service station property (**Figure 1**). A brief history of POETs is below.

#### 3.1 POET HISTORY

Based on sampling conducted between February and June 2006, nine supply wells had concentrations of MTBE above the MDE action level of 20 micrograms per liter ( $\mu\text{g/L}$ ). The supply wells on these nine properties were provided with POETs between March and August 2006. In 2007 and 2008, five additional POETs were installed as a precautionary measure. No other treatment systems were installed until October 2013, when a POET was installed as a precautionary measure at 3627A Southside Avenue due to increasing MtBE concentrations identified via the private supply well sampling program.

Currently only one private supply well with a POET maintained by ExxonMobil (3627A Southside Avenue) has concentrations of benzene, toluene, ethylbenzene, and xylenes (BTEX), five fuel oxygenates including MTBE or naphthalene above MDE standards or action levels.

The table below provides a summary of the locations, installation date, and the maximum concentration of MTBE detected, along with the date. Only one private supply well with an ExxonMobil-installed POET currently has MTBE above standard. Three supply wells with POETs have never had MTBE above standard since sampling began, and the others have all been below standard since at least the end of 2011.

## EXXONMOBIL-INSTALLED POET SYSTEMS

ADDRESS	POET INSTALL DATE	MAXIMUM MTBE RESULT (µg/L) AND DATE	DATE OF LAST MTBE RESULT ABOVE 20 µg/L
14242 Jarrettsville Pike	3/4/2006	4610 on 3/8/06	35.6 on 4/30/07
3507 Hampshire Glen Court	3/16/2006	68.25 on 12/12/06	27.5 on 5/1/2007
3606 Hampshire Glen Court	3/22/2006	20.4 on 3/16/06	20.4 on 3/16/06
3608 Hampshire Glen Court	3/22/2006	18.9 on 4/19/06	None
3503 Hampshire Glen Court	4/27/2006	0.43J on 4/5/10	None
3506 Hampshire Glen Court	4/27/2006	95.2 on 4/20/09	42.2 on 5/18/09
3508 Hampshire Glen Court	4/27/2006	None (all ND)	None (all ND)
3604 Hampshire Glen Court	4/28/2006	80.7 on 7/10/07	24.5 on 10/30/07
14301 Jarrettsville Pike	8/15/2006	218 on 3/3/08*	23.8 on 4/4/11
3313 Paper Mill Road	5/16/2007	33.6 on 7/17/06	25.7 on 11/17/11
14406 Katie Road	7/5/2007	23.5 on 10/30/07	20.4 on 11/13/07
14307 Jarrettsville Pike	8/7/2007	577 on 5/26/10	21.8 on 5/10/11
14405 Jarrettsville Pike	9/12/2008	47.7 on 8/17/06	29.7 on 7/18/08
3605B Southside Avenue <sup>1</sup>	10/20/2008	0.35J on 11/14/06	None
3627A Southside Avenue	10/22/2013	36 on 10/6/15	34 on 2/2/16

\*14301 JVP had a reading of 773,000 ppm for MTBE on 3/3/06; this supply well was subsequently abandoned and the property was connected to the supply well located on 3410 Sweet Air Road.

<sup>1</sup>Ownership of the POET at 3605B Southside Avenue was conveyed to the property owner on 1/21/2011 as part of the "Water Supply Well Installation and Connection Agreement Release."

### 3.2 POET REMOVAL / OWNERSHIP CONVEYANCE

ExxonMobil currently maintains 14 POETs in the project area (within  $\frac{3}{4}$  of a mile of the station property). Of these 14, four have never had detections of MTBE above the 20 µg/L MDE standard. One has been below standard since 2006, and four have been below standard since 2007. Only one supply well with a POET installed by ExxonMobil (3627A Southside Avenue) has been above standard in the last four years (since January 2012). Nine of the supply wells with currently-maintained POETs have been below 10% of standard for gasoline constituents since at least January 2013.

ExxonMobil proposes to either convey ownership or remove the following POETs, per the property owner's preference:

1. 14406 Katie Road – below standard for MTBE since January 2007; below 10% of standard for gasoline constituents since at least January 2013; no active recovery on the property; proposed for discontinuation of POET sampling.
2. 14405 Jarrettsville Pike – below standard for MTBE since August 2008; below 10% of standard for gasoline constituents since at least January 2013; no active recovery on the property; proposed for discontinuation of POET sampling.
3. 3608 Hampshire Glen Court – non-detect for MTBE since sampling started in 2006; below 10% of standard for gasoline constituents since at least January 2013; no active recovery on the property; proposed for discontinuation of POET sampling.
4. 3604 Hampshire Glen Court – below standard for MTBE since November 2007; below 10% of standard for gasoline constituents since at least January 2013; no active recovery on the property; proposed for discontinuation of POET sampling.
5. 3507 Hampshire Glen Court – below standard for MTBE since June 2007; no active recovery on the property; proposed for discontinuation of POET sampling.

A draft resident letter and POET Keep/Remove form are included as **Appendix C**.





ExxonMobil will continue to maintain the 9 POETs installed at properties being retained in the POET sampling program:

14242 Jarrettsville Pike  
14301 Jarrettsville Pike  
14307 Jarrettsville Pike  
3606 Hampshire Glen Court  
3503 Hampshire Glen Court

3506 Hampshire Glen Court  
3508 Hampshire Glen Court  
3313 Paper Mill Road  
3627A Southside Avenue

## 4 CONCLUSION

---

Upon MDE's approval of this work plan, and following notification of residents, ExxonMobil, will adjust the PSW sampling schedule accordingly. Reporting of supply well sampling to the MDE will continue quarterly in the currently-approved format. ExxonMobil will also report under separate cover, the status of POET removals or ownership transfers, per each property owner's preference.

## TABLES

---

**Table 1 - Current Private Supply Well Sampling Frequency**  
 Inactive Exxon Facility #28077  
 14258 Jarrettsville Pike  
 Phoenix, Maryland

Address	Lot ID	Sampling Frequency
3500 Hampshire Glen Ct	M35P356L01	M
3502 Hampshire Glen Ct	M35P356L02	M
3503 Hampshire Glen Ct	M35P356L24	M
3504 Hampshire Glen Ct	M35P356L03	M
3505 Hampshire Glen Ct	M35P356L23	M
3506 Hampshire Glen Ct	M35P356L04	M
3507 Hampshire Glen Ct*	M35P356L2201	M
3507 Hampshire Glen Ct*	M35P356L2202	M
3508 Hampshire Glen Ct	M35P356L05	M
3510 Hampshire Glen Ct	M35P278L02H	M
3600 Hampshire Glen Ct	M35P356L06	M
3602 Hampshire Glen Ct	M35P356L08	M
3603 Hampshire Glen Ct	M35P356L19	Q
3604 Hampshire Glen Ct	M35P356L09	M
3605 Hampshire Glen Ct	M35P356L18	Q
3606 Hampshire Glen Ct	M35P356L11	M
3607 Hampshire Glen Ct	M35P356L17	Q
3608 Hampshire Glen Ct	M35P356L12	M
3609 Hampshire Glen Ct	M35P356L16	Q
3610 Hampshire Glen Ct	M35P356L13	Q
3612 Hampshire Glen Ct	M35P356L14	Q
3614 Hampshire Glen Ct	M35P356L15	Q
14351 Hampshire Knob Dr	M35P224L1R	Q
14352 Hampshire Knob Dr	M35P356L21	Q
14355 Hampshire Knob Dr	M35P356L20	Q
3601 Jackson Cabin Rd	M35P224L30R	Q
3602 Jackson Cabin Rd	M35P224L02	Q
3603 Jackson Cabin Rd	M35P224L29	Q
3604 Jackson Cabin Rd	M35P224L03	SA
3605 Jackson Cabin Rd	M35P224L28	Q
3606 Jackson Cabin Rd	M35P224L04	SA
3607 Jackson Cabin Rd	M35P224L27	Q
3608 Jackson Cabin Rd	M35P224L05	SA
3609 Jackson Cabin Rd	M35P224L26	Q
3610 Jackson Cabin Rd	M35P224L06	SA
3611 Jackson Cabin Rd	M35P224L25	SA
3612 Jackson Cabin Rd	M35P224L07	SA
3615 Jackson Cabin Rd	M35P224L24	SA
3616 Jackson Cabin Rd	M35P224L20	SA
3617 Jackson Cabin Rd	M35P224L23	SA
3618 Jackson Cabin Rd	M35P224L21	SA
3620 Jackson Cabin Rd	M35P224L22	SA
3103 Jackson Ridge Ct	M35P024L26	SA
3104 Jackson Ridge Ct	M35P024L05	SA
3105 Jackson Ridge Ct	M35P024L27	SA
3106 Jackson Ridge Ct	M35P024L04	SA
3107 Jackson Ridge Ct	M35P024L03	SA
14104 Jarrettsville Pike	M43P144LNA	SA
14106 Jarrettsville Pike	M43P142L02	SA
14108 Jarrettsville Pike	M43P143L01	SA

**Table 1 - Current Private Supply Well Sampling Frequency**  
 Inactive Exxon Facility #28077  
 14258 Jarrettsville Pike  
 Phoenix, Maryland

Address	Lot ID	Sampling Frequency
14110 Jarrettsville Pike	M43P026LNA	SA
14112 Jarrettsville Pike	M43P005LNA	SA
14114 Jarrettsville Pike	M35P275LNA	SA
14116 Jarrettsville Pike	M35P160LNA	SA
14118 Jarrettsville Pike	M35P159LNA	SA
14120 Jarrettsville Pike	M35P161L02	SA
14200 Jarrettsville Pike	M35P161L01	SA
14202 Jarrettsville Pike	M35P226LNA	Q
14212 Jarrettsville Pike	M35P282LNA	Q
14214 Jarrettsville Pike	M35P201LNA	Q
14228 Jarrettsville Pike	M35P285LNA	Q
14232 Jarrettsville Pike	M35P210LNA	Q
14240 Jarrettsville Pike*	M35P182LNA	Q
14240 Jarrettsville Pike*	M35P182LNA02	Q
14242 Jarrettsville Pike	M35P183LNA	M
14243 Jarrettsville Pike	M35P217LNA	M
14258 Jarrettsville Pike	M35P185LNA	Q
14300 Jarrettsville Pike	M35P123LNAJ	M
14301 Jarrettsville Pike	M35P031LNA	M
14307 Jarrettsville Pike*	M35P151LNA	M
14307 Jarrettsville Pike*	M35P151LB	M
14315 Jarrettsville Pike	M35P152L01	Q
14320 Jarrettsville Pike	M35P243LNA	M
14330 Jarrettsville Pike	M35P174LNA	M
14333 Jarrettsville Pike	M35P152L02	Q
14335 Jarrettsville Pike	M35P280LNA	Q
14342 Jarrettsville Pike	M35P167LNA	Q
14345 Jarrettsville Pike	M35P281LNA	Q
14346 Jarrettsville Pike	M35P130LNA	Q
14405 Jarrettsville Pike	M35P314LNA	M
14407 Jarrettsville Pike	M35P153LNA	SA
14409 Jarrettsville Pike	M35P046LNA	SA
14417 Jarrettsville Pike	M35P279LNA	SA
14418 Jarrettsville Pike	M35P168L01	SA
14423 Jarrettsville Pike*	M35P106LNA01	SA
14423 Jarrettsville Pike*	M35P106LNA02	SA
14429 Jarrettsville Pike	M35P033L02	SA
14430 Jarrettsville Pike	M35P195LNA0	SA
14432 Jarrettsville Pike	M35P195LNA2	SA
14433 Jarrettsville Pike	M35P033L03J	SA
14403 Katie Rd	M35P224L19	SA
14405 Katie Rd	M35P224L18	SA
14406 Katie Rd	M35P224L08	M
14407 Katie Rd	M35P224L17	SA
14408 Katie Rd	M35P224L09	M
14409 Katie Rd	M35P224L16	SA
14410 Katie Rd	M35P224L10	Q
14411 Katie Rd	M35P224L15	SA
14412 Katie Rd	M35P224L11	SA
14413 Katie Rd	M35P224L14	SA

**Table 1 - Current Private Supply Well Sampling Frequency**  
 Inactive Exxon Facility #28077  
 14258 Jarrettsville Pike  
 Phoenix, Maryland

Address	Lot ID	Sampling Frequency
14414 Katie Rd	M35P224L12	SA
14415 Katie Rd	M36P240L01	SA
14416 Katie Rd	M35P224L13	SA
14417 Katie Rd	M36P239L02	SA
14418 Katie Rd	M36P133L05	Q
14419 Katie Rd	M36P133L03	SA
14420 Katie Rd	M36P133L04	Q
14530 Manor Rd	M36P108LNA	Q
14532 Manor Rd	M36P191LNA	Q
14604 Manor Rd	M36P108L02	SA
3400 Meredith Ridge Rd	M35P168L13	SA
3401 Meredith Ridge Rd	M35P168L12	SA
3403 Meredith Ridge Rd	M35P168L11	SA
3405 Meredith Ridge Rd	M35P168L10	SA
3406 Meredith Ridge Rd	M35P168L15	SA
3407 Meredith Ridge Rd	M35P168L09	SA
3409 Meredith Ridge Rd	M35P168L08	Q
3411 Meredith Ridge Rd	M35P168L07	Q
3412 Meredith Ridge Rd	M35P168L16	SA
3414 Meredith Ridge Rd	M35P168L17	SA
3415 Meredith Ridge Rd	M35P168L04	SA
3416 Meredith Ridge Rd	M35P168L03	SA
3417 Meredith Ridge Rd	M35P168L05	Q
3418 Meredith Ridge Rd	M35P168L02	SA
14416 Misty Valley Rd	M36P160L05	SA
14418 Misty Valley Rd	M36P160L06	SA
3101 Paper Mill Rd <sup>1</sup>	M35P316LNA01	SA
3112 Paper Mill Rd*	M35P241LNA01	Q
3112 Paper Mill Rd*	M35P241LNA02	Q
3115 Paper Mill Rd	M35P118LNA	SA
3116 Paper Mill Rd	M35P024L29	SA
3117 Paper Mill Rd	M35P138LNA	SA
3120 Paper Mill Rd	M35P024L28	M
3121 Paper Mill Rd	M35P242LNA	SA
3204 Paper Mill Rd	M35P024L02	SA
3206 Paper Mill Rd	M35P245LNA	SA
3210 Paper Mill Rd	M35P310L07	SA
3212 Paper Mill Rd	M35P310L06	SA
3214 Paper Mill Rd	M35P028L01	Q
3216 Paper Mill Rd	M35P310L05	SA
3219 Paper Mill Rd	M35P120LNA	SA
3224 Paper Mill Rd	M35P028L02	Q
3226 Paper Mill Rd	M35P310L04	SA
3235 Paper Mill Rd	M35P310L08	Q
3300 Paper Mill Rd	M35P310L02	M
3301 Paper Mill Rd	M35P310L09	Q
3305 Paper Mill Rd	M35P310L10	M
3306 Paper Mill Rd	M35P310L01	Q
3313 Paper Mill Rd	M35P054LNA	M
3314 Paper Mill Rd*	M35P116LNA01	Q

**Table 1 - Current Private Supply Well Sampling Frequency**

Inactive Exxon Facility #28077

14258 Jarrettsville Pike

Phoenix, Maryland

4 of 6

Address	Lot ID	Sampling Frequency
3314 Paper Mill Rd*	M35P116LNA02	Q
3320 Paper Mill Rd	M35P123LNAP	M
14100 Robcaste Rd	M35P265L09	SA
14101 Robcaste Rd	M35P265L08	SA
14102 Robcaste Rd	M35P386LNA	SA
14103 Robcaste Rd	M35P265L06	SA
14104 Robcaste Rd	M35P265L10	SA
14105 Robcaste Rd	M35P265L04	SA
14106 Robcaste Rd	M35P265L07	SA
14107 Robcaste Rd	M35P265L03	SA
14109 Robcaste Rd	M35P265L02	SA
14110 Robcaste Rd	M35P265L05	SA
14111 Robcaste Rd	M35P265L01	SA
14200 Robcaste Rd	M35P322L13	SA
14201 Robcaste Rd	M35P322L12	SA
14202 Robcaste Rd	M35P322L14	SA
14203 Robcaste Rd	M35P322L11	Q
14204 Robcaste Rd	M35P322L15	Q
14205 Robcaste Rd	M35P322L10	Q
14206 Robcaste Rd	M35P322L16	Q
14207 Robcaste Rd	M35P329L21	Q
14208 Robcaste Rd	M35P322L17	Q
14210 Robcaste Rd	M35P322L18	M
14211 Robcaste Rd	M35P322L08	Q
14212 Robcaste Rd	M35P322L19	M
14213 Robcaste Rd	M35P322L07	Q
14214 Robcaste Rd	M35P322L20	Q
14215 Robcaste Rd	M35P322L06	Q
14217 Robcaste Rd	M35P322L05	Q
14219 Robcaste Rd	M35P322L04	Q
14221 Robcaste Rd	M35P322L03	M
14223 Robcaste Rd	M35P322L02	M
14225 Robcaste Rd	M35P322L01	M
14300 Robcaste Rd	M35P310L03	Q
14302 Robcaste Rd	M35P028L03	Q
14303 Robcaste Rd	M35P028L09	Q
14304 Robcaste Rd	M35P028L04	Q
14305 Robcaste Rd	M35P028L08	Q
14306 Robcaste Rd	M35P028L05	Q
14307 Robcaste Rd	M35P028L07	M
14308 Robcaste Rd	M35P028L06	Q
3517 Southside Ave	M35P405L02	Q
3523 Southside Ave	M35P399L01	Q
3525 Southside Ave	M35P277L03	Q
3527 Southside Ave	M35P277L02	Q
3529 Southside Ave	M35P277L01	Q
3530 Southside Ave*	M35P164LNA01	SA
3530 Southside Ave*	M35P164LNA02	SA
3531 Southside Ave	M35P344LNA	SA
3600 Southside Ave	M35P108LNA	SA

**Table 1 - Current Private Supply Well Sampling Frequency**

Inactive Exxon Facility #28077  
 14258 Jarrettsville Pike  
 Phoenix, Maryland

Address	Lot ID	Sampling Frequency
3602 Southside Ave	M35P109LNA	SA
3603 Southside Ave*	M35P278L0101	Q
3603 Southside Ave*	M35P278L0102	Q
3605 Southside Ave	M35P278L02S	M
3605 A Southside Ave	M35P221L01	M
3605 B Southside Ave	M35P221L02	M
3605 C Southside Ave	M35P221L03	M
3605 D Southside Ave	M35P221L04	M
3607 Southside Ave	M35P213LNA	SA
3610 Southside Ave	M35P025L01	SA
3611 Southside Ave	M35P361LNA	Q
3613 Southside Ave	M35P397L01	Q
3615 Southside Ave	M36P097L03	M
3616 Southside Ave	M36P073L01	Q
3617 Southside Ave	M36P245L02	Q
3627 Southside Ave	M36P225LNA	Q
3627 A Southside Ave	M36P122LNA	M
3629 Southside Ave	M36P123LNA	Q
3630 Southside Ave	M36P073L04	SA
3631 Southside Ave	M36P179LNA	Q
3633 Southside Ave	M36P076LNA	Q
3634 Southside Ave	M36P189LNA	SA
3635 Southside Ave	M36P226LNA	Q
3505 Stansbury Mill Rd	M35P033L03S	SA
3506 Stansbury Mill Rd	M35P235LNA	SA
3507 Stansbury Mill Rd	M35P033L04	SA
3509 Stansbury Mill Rd	M35P196LNA	SA
3511 Stansbury Mill Rd	M35P033L05	SA
3513 Stansbury Mill Rd	M35P200LNA	SA
3517 Stansbury Mill Rd	M35P398L01	SA
3519 Stansbury Mill Rd	M35P061LNA	SA
3422 Sweet Air Rd	M35P121LNA	M
3430 Sweet Air Rd	M35P365LNA	Q
3440 Sweet Air Rd	M35P107LNA	Q
3500 Sweet Air Rd*	M35P117LNA01	Q
3500 Sweet Air Rd*	M35P117LNA02	Q
3506 Sweet Air Rd	M35P113LNA	SA
3510 Sweet Air Rd	M35P112LNA	SA
3512 Sweet Air Rd	M35P114LNA	SA
3518 Sweet Air Rd	M35P189LNA	SA
3526 Sweet Air Rd	M35P197LNA	SA
3530 Sweet Air Rd	M35P172LNA	SA
3608 Sweet Air Rd	M36P103LNA	SA
3612 Sweet Air Rd	M36P084LNA	SA
3300 Whitesworth Rd*	M43P299L0B	SA
3300 Whitesworth Rd*	M43P299L0B2	SA
3300 Whitesworth Rd*	M43P299L0D	SA
3302 Whitesworth Rd	M43P225L03	SA
3304 Whitesworth Rd	M43P225L02	SA
3305 Whitesworth Rd	M43P225L02A	SA



**Table 1 - Current Private Supply Well Sampling Frequency**  
 Inactive Exxon Facility #28077  
 14258 Jarrettsville Pike  
 Phoenix, Maryland

Address	Lot ID	Sampling Frequency
3306 Whitesworth Rd	M43P225L01	SA
3307 Whitesworth Rd	M43P225L01A	SA
3309 Whitesworth Rd	M43P225L03A	SA
3311 Whitesworth Rd	M43P299L04	SA
3313 Whitesworth Rd	M43P299L03	SA
3315 Whitesworth Rd	M43P299L02	SA
3317 Whitesworth Rd*	M43P299L0101	SA
3317 Whitesworth Rd*	M43P299L0102	SA

## Notes:

- M = Monthly Sampling Schedule
- Q = Quarterly Sampling Schedule
- SA = Semi-Annual Sampling Schedule
- \* = Properties with more than one potable well
- <sup>1</sup> = The former Senior Community Center building located at 3101 Paper Mill Road was demolished in late 2010/early 2011 and the potable well (M35P316LNA02) servicing the former building is currently inactive (last sample collected 11/15/10)

**Table 2 – Proposed Private Supply Well Sampling Frequency rev1**

Inactive Exxon Facility #28077

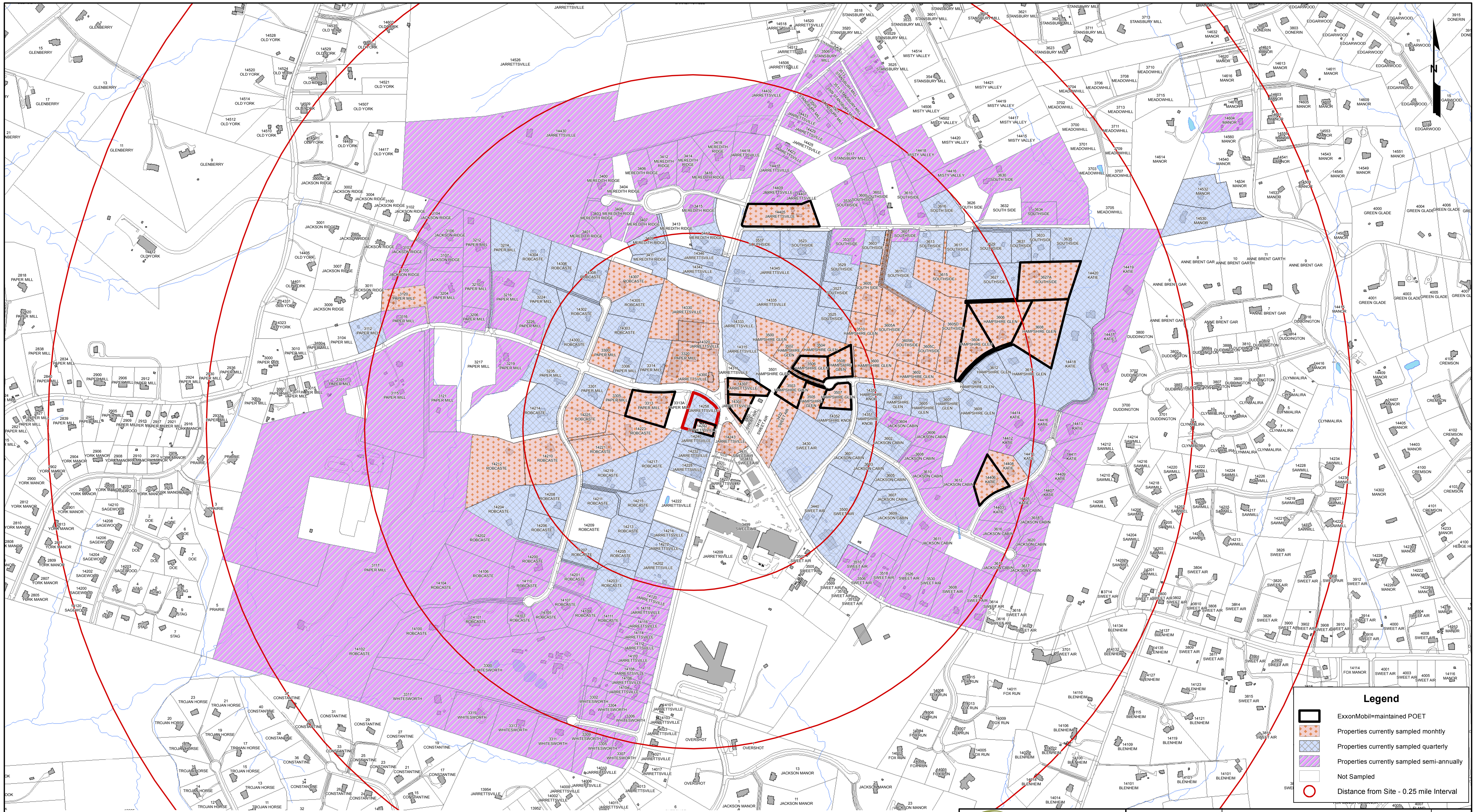
14258 Jarrettsville Pike

Phoenix, Maryland

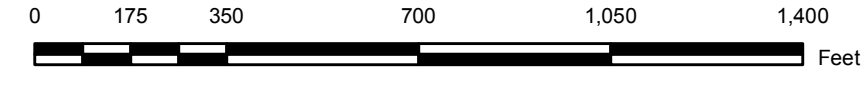
	<b>Address</b>	<b>Lot ID</b>	<b>Current Frequency</b>	<b>Sampling Frequency</b>
1	3500 Hampshire Glen Court	M35P356L01	M	SA
2	3502 Hampshire Glen Court	M35P356L02	M	SA
3	3503 Hampshire Glen Court	M35P356L24	M	Q
4	3504 Hampshire Glen Court	M35P356L03	M	SA
5	3505 Hampshire Glen Court	M35P356L23	M	SA
6	3506 Hampshire Glen Court	M35P356L04	M	Q
7	3508 Hampshire Glen Court	M35P356L05	M	Q
8	3600 Hampshire Glen Court	M35P356L06	M	SA
9	3606 Hampshire Glen Court	M35P356L11	M	SA
10	14240 Jarrettsville Pike*	M35P182LNA	Q	Q
11	14240 Jarrettsville Pike*	M35P182LNA02	Q	Q
12	14242 Jarrettsville Pike	M35P183LNA	M	Q
13	14258 Jarrettsville Pike	M35P185LNA	Q	Q
14	14300 Jarrettsville Pike	M35P123LNA	M	SA
15	14301 Jarrettsville Pike	M35P031LNA	M	Q
16	14307 Jarrettsville Pike*	M35P151LNA	M	Q
17	14307 Jarrettsville Pike*	M35P151LB	M	Q
18	14315 Jarrettsville Pike	M35P152L01	Q	Q
19	14320 Jarrettsville Pike	M35P243LNA	M	SA
20	14330 Jarrettsville Pike	M35P174LNA	M	SA
21	14333 Jarrettsville Pike	M35P152L02	Q	Q
22	14335 Jarrettsville Pike	M35P280LNA	Q	SA
23	3313 Paper Mill Road	M35P054LNA	M	Q
24	3320 Paper Mill Road	M35P123LNAP	M	SA
25	14208 Robcaste Road	M35P322L17	Q	SA
26	14210 Robcaste Road	M35P322L18	M	SA
27	14217 Robcaste Road	M35P322L05	Q	Q
28	14219 Robcaste Road	M35P322L04	Q	SA
29	14221 Robcaste Road	M35P322L03	M	SA
30	14223 Robcaste Road	M35P322L02	M	Q
31	14225 Robcaste Road	M35P322L01	M	SA
32	3525 Southside Avenue	M35P277L03	Q	SA
33	3605A Southside Avenue	M35P221L01	M	SA
34	3605B Southside Avenue	M35P221L02	M	SA
35	3605C Southside Avenue	M35P221L03	M	SA
36	3605D Southside Avenue	M35P221L04	M	SA
37	3627A Southside Avenue	M36P122LNA	M	M
38	3635 Southside Avenue	M36P226LNA	Q	Q

## FIGURES

---



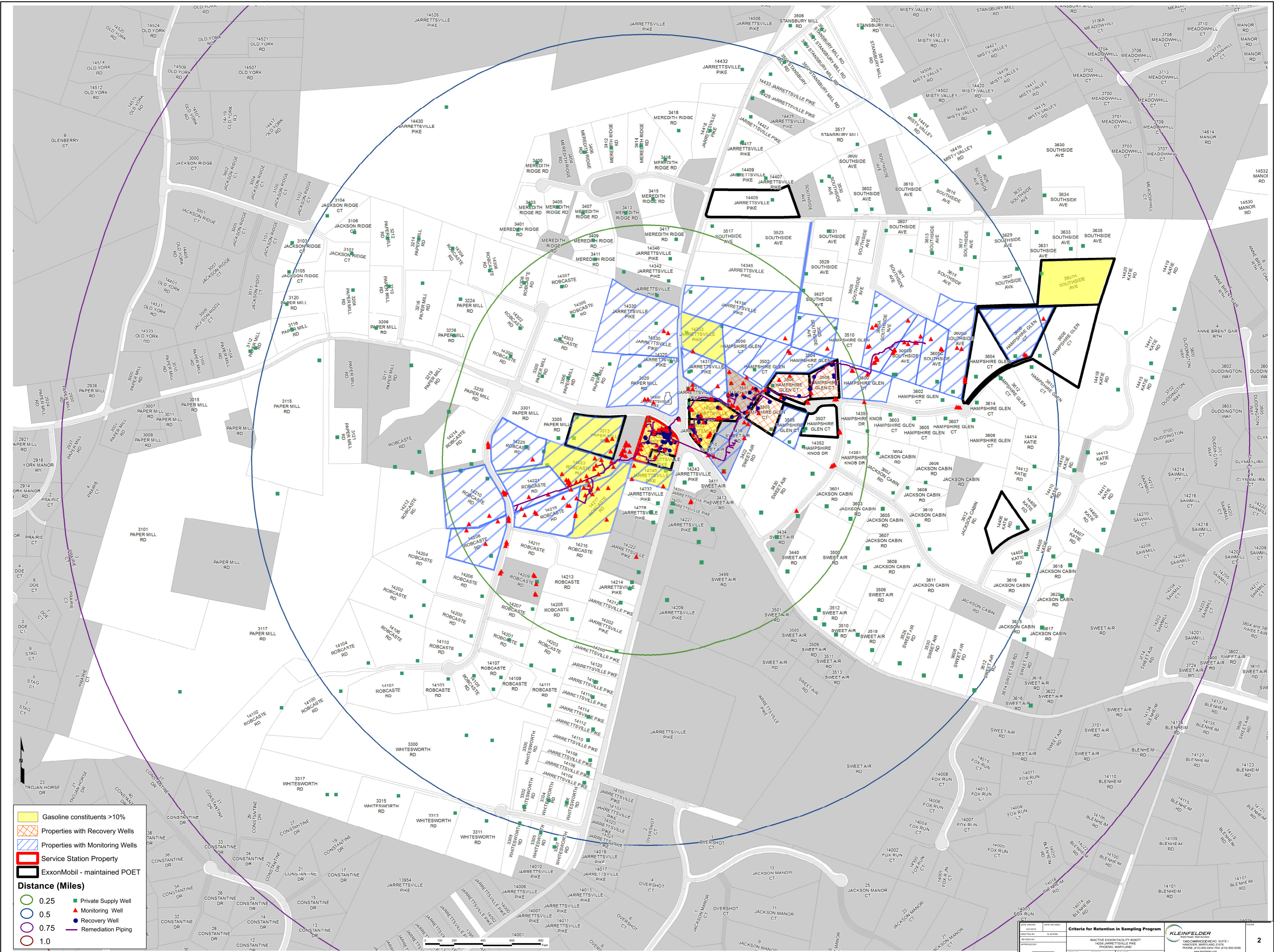
The information contained on this graphic representation has been compiled from a variety of sources and is subject to change without notice. It is intended for informational purposes only and should not be used for any other purpose. The user of this information is advised to verify the accuracy of the information with the appropriate authorities. The user of this information is advised to verify the accuracy of the information with the appropriate authorities. The user of this information is advised to verify the accuracy of the information with the appropriate authorities.



PROJECT NO.	20153942
DRAWN:	12/8/2017
DRAWN BY:	A. Doucett
CHECKED BY:	S. Schiding
FILE NAME:	

**CURRENT PWS FREQUENCY**

INACTIVE EXXON FACILITY #28077  
 14258 JARRETTSVILLE PIKE  
 PHOENIX, MARYLAND  
 BALTIMORE COUNTY



**Legend**

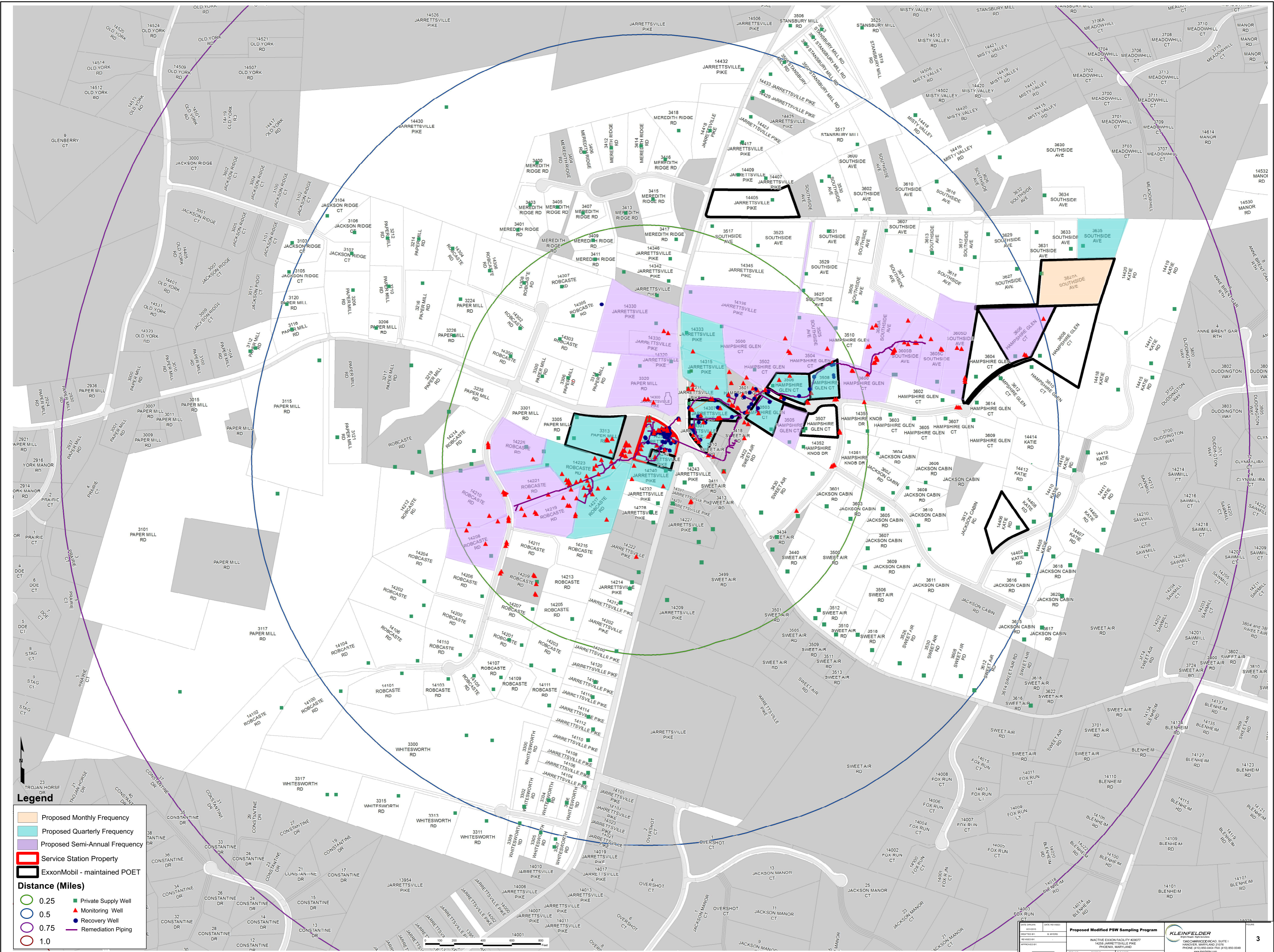
- Gasoline constituents >10%
- Properties with Recovery Wells
- Properties with Monitoring Wells
- Service Station Property
- ExxonMobil - maintained POET

**Distance (Miles)**

- 0.25
- 0.5
- 0.75
- 1.0

**Well Types**

- Private Supply Well
- Monitoring Well
- Recovery Well
- Remediation Piping



**Legend**

- Proposed Monthly Frequency
- Proposed Quarterly Frequency
- Proposed Semi-Annual Frequency
- Service Station Property
- ExxonMobil - maintained POET

**Distance (Miles)**

- 0.25
- 0.5
- 0.75
- 1.0

- Private Supply Well
- Monitoring Well
- Recovery Well
- Remediation Piping