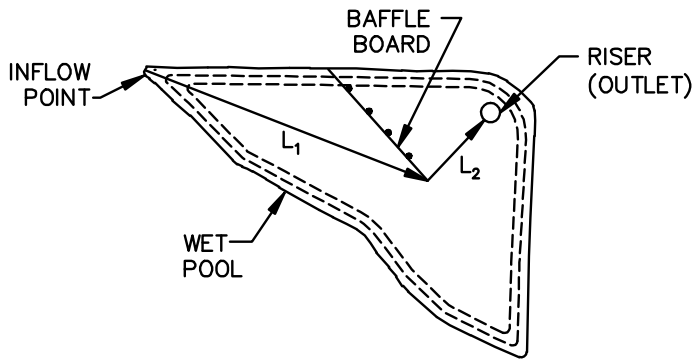
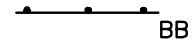
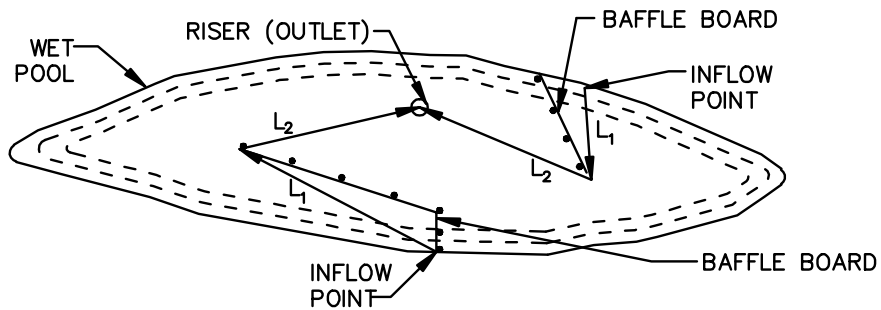
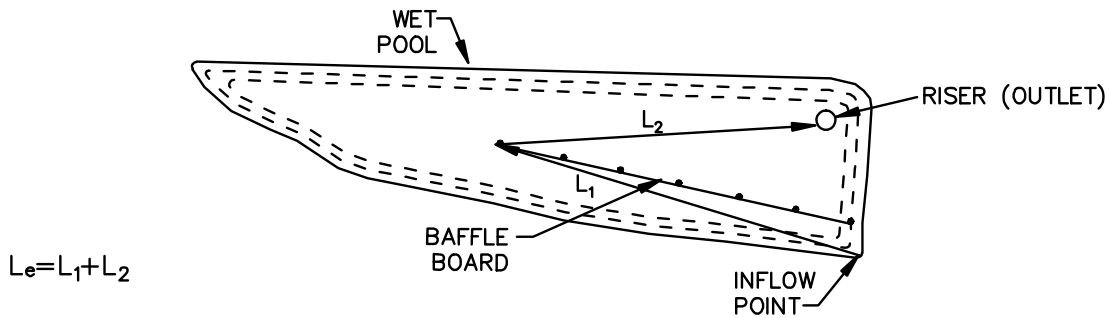


DETAIL G-2-4 BAFFLE BOARDS

STANDARD SYMBOL



BAFFLES ARE REQUIRED TO PROVIDE A FLOW LENGTH BETWEEN INFLOW POINT AND OUTLET EQUAL TO TWICE THE EFFECTIVE TRAP/BASIN WIDTH.



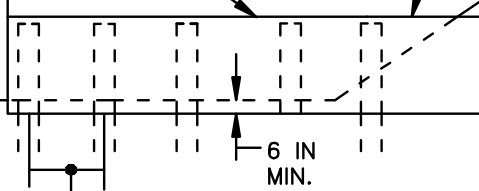
PLAN VIEWS

SET ELEVATION AT $\frac{1}{2}$ OF THE DRY STORAGE (WET STORAGE ELEVATION + DRY STORAGE ELEVATION / 2) OR 6 IN BELOW WEIR CREST (OUTLET) WHICHEVER IS LOWER

POSTS MINIMUM 4 IN SQUARE OR 5 IN ROUND SET AT LEAST 3 FT INTO THE GROUND

3 FT TYP.

4 FT CENTER TO CENTER



SHEETS OF 4 FT x 8 FT x $\frac{1}{2}$ IN CDX EXTERIOR GRADE PLYWOOD OR EQUIVALENT

EXISTING GROUND

BAFFLE DETAIL

MARYLAND STANDARDS AND SPECIFICATIONS FOR SOIL EROSION AND SEDIMENT CONTROL