

FINAL

**Total Maximum Daily Load of Sediment
in the Non-Tidal Back River Watershed,
Baltimore City and Baltimore County, Maryland**

FINAL



DEPARTMENT OF THE ENVIRONMENT
1800 Montgomery Boulevard, Suite 540
Baltimore, Maryland 21230-1718

Submitted to:

Water Protection Division
U.S. Environmental Protection Agency, Region III
1650 Arch Street
Philadelphia, PA 19103-2029

December 2017

EPA Submittal Date: February 14, 2018
EPA Approval Date: March 5, 2018

Table of Contents

List of Figures i
List of Tables i
List of Abbreviations ii
EXECUTIVE SUMMARY iv
1.0 INTRODUCTION 1
2.0 SETTING AND WATER QUALITY DESCRIPTION 5
 2.1 General Setting 5
 2.1.1 Land-use 8
 2.2 Source Assessment 11
 2.2.1 Nonpoint Source Assessment 11
 2.2.2 Point Source Assessment 13
 2.2.3 Summary of Baseline Loads 14
 2.3 Water Quality Characterization 15
 2.4 Water Quality Impairment 19
3.0 TARGETED WATER QUALITY GOAL 20
4.0 TOTAL MAXIMUM DAILY LOADS AND SOURCE ALLOCATION 22
 4.1 Overview 22
 4.2 Analysis Framework 22
 4.3 Scenario Descriptions and Results 24
 4.4 Critical Condition and Seasonality 26
 4.5 TMDL Loading Caps 26
 4.6 Load Allocations Between Point and Nonpoint Sources 27
 4.7 Margin of Safety 30
 4.8 Summary of Total Maximum Daily Loads 30
5.0 ASSURANCE OF IMPLEMENTATION 31
REFERENCES 34
APPENDIX A – Watershed Characterization Data A1
APPENDIX B – Technical Approach Used to Generate Maximum Daily Loads B1

List of Figures

Figure 1: Designated Use Classes of the Back River Watershed in Baltimore City and Baltimore County, Maryland 4

Figure 2: Location Map of the Back River Watershed in Baltimore City and Baltimore County, Maryland 7

Figure 3: Land-use of the Back River Watershed..... 10

Figure 4: Monitoring Stations in the Back River Watershed..... 18

Figure B-1: Daily Time Series of CBP River Segment Daily Simulation Results for the Back River WatershedB4

List of Tables

Table ES-1: Back River Integrated Report Listings v

Table ES-2: Back River Watershed Baseline Sediment Loads (ton/yr) viii

Table ES-3: Back River Watershed Average Annual TMDL of Sediment (ton/yr)..... viii

Table ES-4: Back River Watershed Baseline Load, TMDL, and Total Reduction Percentage viii

Table 1: Back River Integrated Report Listings 2

Table 2: Land-Use Percentage Distribution for the Back River Watershed 9

Table 3: Baltimore City and Baltimore County Target EOF TSS Loading Rates (ton/acre/yr) by Land-Use 12

Table 4: Back River Watershed Baseline Sediment Loads (ton/yr) 14

Table 5: Detailed Baseline Sediment Loads Within the Back River Watershed^{1,2} 15

Table 6: Monitoring Stations in the Back River Watershed 17

Table 7: Back River Watershed Baseline Load and TMDL 27

Table 8: Back River Watershed TMDL Reductions by Source Category 28

Table 9: Back River Watershed Average Annual TMDL of Sediment (ton/yr) 30

Table 10: Back River Watershed Maximum Daily Load of Sediment (ton/day) 30

Table A-1: Reference Watersheds A1

Table B-1: Back River Watershed Maximum Daily Loads of Sediment/TSS (ton/day)..B6

List of Abbreviations

AFO	Animal Feeding Operations
BIBI	Benthic Index of Biotic Integrity
BIP	Buffer Incentive Program
BMP	Best Management Practice
BSID	Biological Stressor Identification
CAFOs	Concentrated Animal Feeding Operations
CBLCD	Chesapeake Bay Land-Cover Dataset
CBP	Chesapeake Bay Program
CBP P4.3	Chesapeake Bay Program Model Phase 4.3
CBP P5.3.2	Chesapeake Bay Program Model Phase 5.3.2
CCAP	Coastal Change Analysis Program
CFR	Code of Federal Regulations
cfs	Cubic Feet per Second
COMAR	Code of Maryland Regulations
CV	Coefficient of Variation
CWA	Clean Water Act
DI	Diversity Index
DMR	Discharge Monitoring Report
EOF	Edge-of-Field
EOS	Edge-of-Stream
EPT	<i>Ephemeroptera, Plecoptera, and Trichoptera</i>
ESD	Environmental Site Design
FIBI	Fish Index of Biologic Integrity
GIS	Geographic Information System
HBI	Hilsenhoff Biotic Index
HSPF	Hydrological Simulation Program Fortran
IBI	Index of Biotic Integrity
LA	Load Allocation
m	Meter
m ³ /yr	Meters cubed per year
MACS	Maryland Agricultural Water Quality Cost-Share Program
MAL	Minimum Allowable IBI Limit
MBSS	Maryland Biological Stream Survey
MDA	Maryland Department of Agriculture
MDDNR	Maryland Department of Natural Resources
MDE	Maryland Department of the Environment
MDL	Maximum Daily Load
MDP	Maryland Department of Planning
MGD	Millions of Gallons per Day
mg/l	Milligrams per liter
MGS	Maryland Geological Survey
MOS	Margin of Safety

FINAL

MRLC	Multi-Resolution Land Characteristics
MS4	Municipal Separate Storm Sewer System
NLCD	National Land-Cover Dataset
NOAA	National Oceanic and Atmospheric Administration
NPDES	National Pollutant Discharge Elimination System
NRCS	Natural Resource Conservation Service
NRI	Natural Resources Inventory
PSU	Primary Sampling Unit
SCS	Soil Conservation Service
SDF	Sediment Delivery Factor
SHA	State Highway Administration
TMDL	Total Maximum Daily Load
ton/acre/yr	Tons per acre per year
ton/day	Tons per day
ton/yr	Tons per year
TSD	Technical Support Document
TSS	Total Suspended Solids
USDA	United States Department of Agriculture
USEPA	U.S. Environmental Protection Agency
USGS	United States Geological Survey
WIP	Watershed Implementation Plan
WLA	Waste Load Allocation
WQA	Water Quality Analysis
WQLS	Water Quality Limited Segment
WWTP	Wastewater Treatment Plant

FINAL

EXECUTIVE SUMMARY

Section 303(d) of the federal Clean Water Act (CWA) and the U.S. Environmental Protection Agency's (USEPA) implementing regulations direct each state to identify and list waters, known as water quality limited segments (WQLSs), in which current required controls of a specified substance are inadequate to achieve water quality standards. For each WQLS, the State is required to either establish a TMDL of the specified substance that the waterbody can receive without violating water quality standards, or demonstrate that water quality standards are being met (CFR 2016b). This document, upon approval by USEPA, establishes a Total Maximum Daily Load (TMDL) for sediment/total suspended solids (TSS) in the non-tidal Maryland 8-Digit Back River watershed (2014 *Integrated Report of Surface Water Quality in Maryland* Assessment Unit ID: MD-02130901). In this TMDL, the terms TSS and sediment may be used interchangeably.

The Back River watershed is associated with two assessment units in Maryland's Integrated Report: a non-tidal 8-digit watershed (02130901) and an estuary portion [Back River Oligohaline (BACOH)]. A sediment TMDL for the BACOH was established as part of the Chesapeake Bay TMDLs in 2010. Background information on the tidal portion of the watershed is presented for informational purposes only.

The Maryland Department of the Environment (MDE) identified the waters of the Back River watershed on the State's 2014 Integrated Report as impaired by multiple pollutants (MDE 2014a). Table ES-1 identifies Integrated Report listings associated with this watershed. A data solicitation for TSS/sediment was conducted by MDE in September 2016, and all readily available data has been considered.

The Maryland Surface Water Use Designation in the Code of Maryland Regulations (COMAR) for the Back River watershed's nontidal tributaries are designated as Use Class I - *water contact recreation, and protection of nontidal warmwater aquatic life* and Use Class IV – *recreational trout waters*. Tidal tributaries and the Back River mainstem are designated Use Class II - *support of estuarine and marine aquatic life and shellfish harvesting* (COMAR 2016a, b, c).

The non-tidal Back River watershed was originally listed for impacts to biological communities on the 2002 Integrated Report. The listing was based on the biological assessment methodology, which uses aquatic health scores, consisting of the Benthic Index of Biotic Integrity (BIBI) and Fish Index of Biotic Integrity (FIBI). These indices indicated that the biological metrics for the watershed exhibit a significant negative deviation from reference conditions (MDE 2002a).

Table ES-1: Back River Integrated Report Listings

Watershed	Basin Code	Tidal/Non-tidal	Subwatershed	Designated Use Class	Year Listed	Identified Pollutant	Listing Category	
Back River	02130901	Non-tidal		I - Aquatic Life and Wildlife	2012	TSS	5	
						Chlorides		
						Sulfates		
						Lack of Riparian Buffer	4c	
			Channelization					
	Back River 0213090140	I – Water Contact Sports	2002	Bacteria	4a			
	Herring Run 0213090141							
	Herring Run 0213090142							
Back River Oligohaline	BACOH	Tidal		I - Aquatic Life and Wildlife	1996	TSS	4a	
					1998	PCB		
					-	Zinc	2	
						Impacts to biological communities	3	
					II – Fishing	1996	Chlordane	4a
						2008	PCB in fish tissue	
				-		Mercury in fish tissue	2	
				II – Seasonal Migratory Fish Spawning and Nursery Subcategory	1996	TN	4a	
						TP		
				II – Open-Water Fish and Shellfish Subcategory	1996	TN	4a	
						TP		

- Category 2 indicates the waterbody is meeting water quality standards for the identified substance
- Category 3 indicates insufficient data to make a listing category determination
- Category 4a indicates a TMDL has been completed and approved by EPA
- Category 4c indicates the cause of the impairment is pollution and not a pollutant
- Category 5 indicates that the waterbody is impaired and a TMDL or water quality analysis (WQA) is needed.

FINAL

In order to determine what stressor or stressors are impacting aquatic life, MDE's *Biological Stressor Identification* (BSID) methodology was applied (MDE 2009). The BSID analysis for the Back River watershed identified sediment, instream habitat, riparian habitat, low dissolved oxygen, and inorganic pollutants (i.e. chlorides, sulfates). The sediment parameter shows a significant association with degraded biological conditions due to bar formation, channel alteration, and high embeddedness. The instream habitat stressor group was significant due to channelization present, marginal to poor instream habitat structure, marginal to poor riffle/run quality, and marginal to poor velocity/depth diversity. The riparian habitat stressor group was significant due to the absence of riparian buffer. The water chemistry parameter group was significant due to low DO, high chlorides, high conductivity, and high sulfates. Additionally, the BSID identified, anthropogenic, urban, and impervious sources as those that have led to altered habitat heterogeneity and possible elevated suspended sediment in the watershed, which are in turn the probable causes of impacts to biological communities. Further details of this analysis are presented in the 2012 document entitled, *Watershed Report for Biological Impairment of the Non-Tidal Back River Watershed in Baltimore City and Baltimore County, Maryland Biological Stressor Identification Analysis Results and Interpretation* (MDE 2012).

As a result of the BSID analysis, the non-tidal MD 8-digit Back River watershed was listed on the 2012 Integrated Report as impaired by TSS thus requiring a TMDL. The TMDL will apply only to the non-tidal portion of the watershed. For simplicity, further reference in this document to Back River Watershed will refer only to the non-tidal MD 8-digit watershed.

The objective of this TMDL is to ensure that watershed sediment loads are at a level that supports the Use Class I/IV designations for the Back River watershed. The TMDL will address water clarity problems and associated impacts to aquatic life in the Back River watershed caused by high sediment and TSS concentrations. Separate sediment TMDLs were developed for the Use Class II impairments as part of the Chesapeake Bay TMDLs in 2010.

The CWA requires TMDLs to be protective of all the designated uses applicable to a particular waterbody. The primary focus of this TMDL is protecting the designated use of this watershed, which is supporting aquatic life. The Back River watershed is listed in the Integrated Report because a biological assessment of the watershed revealed the current levels of sediment and other pollutants prevent the watershed from achieving its designated use of supporting aquatic life. However, the required reductions within the TMDL are expected to protect all designated uses of the watershed, including water contact recreation and recreational trout waters. Aquatic life is more sensitive to sediment impacts than recreation because aquatic life impacts result from continuous exposure that can affect respiration and propagation. Recreation, on the other hand, is sporadic and often avoided during times when sediment concentrations are likely to be highest (e.g. rainstorms). Sediment also poses no human health risk due to dermal contact or minimal ingestion that would occur during recreation. This TMDL's protection of aquatic life from sediment impacts includes protection of trout and therefore support the recreational trout

FINAL

waters designated use. Narrative sediment criteria for recreational trout waters (Use Class IV) are the same as that for Use Class I waters. Therefore, if the TMDL is at a sediment level to support aquatic life (Use Class I), it is also meeting sediment requirements for recreational trout waters. Additionally, nine of the eleven reference watersheds contain recreational trout waters. Therefore, it can be inferred that setting sediment values based on these reference watersheds would be supportive of trout waters.

Currently in Maryland, there are no specific numeric criteria that quantify the impact of sediment on the aquatic life of non-tidal stream systems. In order to quantify the impact of sediment on the aquatic life of non-tidal stream systems, a reference watershed TMDL approach was used, which resulted in the establishment of a *sediment loading threshold* (MDE 2006). This threshold is based on a detailed analysis of sediment loads from watersheds that are identified as supporting aquatic life (i.e., reference watersheds) based on Maryland's biological assessment methodology (Roth *et al.* 1998, 2000; Stribling *et al.* 1998; MDE 2014b). This threshold is then used to determine a watershed specific sediment TMDL endpoint. The resulting loads are considered the maximum allowable loads the waterbody can receive without causing any sediment-related impacts to aquatic health.

In order to use a reference watershed approach, sediment loads are estimated using a watershed model. For this analysis, the Chesapeake Bay Program Phase 5.3.2 (CBP P5.3.2) watershed model was chosen and specifically, the *edge-of-stream* (EOS) land-use sediment loads were used. The CBP P5.3.2 model was appropriate for this TMDL because the spatial domain of the model segmentation aggregates to the MD 8-digit watershed scale, which is consistent with the impairment listing.

USEPA's regulations require TMDLs to take into account seasonality and critical conditions for stream flow, loading, and water quality parameters (CFR 2016b). The intent of this requirement is to ensure that the water quality of the waterbody is protected during times when it is most vulnerable. The biological monitoring data used to determine the reference watersheds reflect the impacts of stressors (i.e., sediment impacts to stream biota) over the course of time (i.e., captures the impacts of both high and low flow events). Thus, critical conditions are inherently addressed. Seasonality is captured in several components. First, it is implicitly included in biological sampling as biological communities reflect the impacts of stressors over time, as described above. Second, the Maryland Biological Stream Survey (MBSS) dataset, which serves as the primary dataset for calculating the biological metrics of the watershed (i.e., BIBI and FIBI scores), included benthic sampling in the spring and fish sampling in the summer. Moreover, the sediment loading rates used in the TMDL were determined using the CBP P5.3.2 model which is a continuous simulation model with a simulation period 1991-2000, based on Hydrological Simulation Program Fortran (HSPF) model, thereby addressing annual changes in hydrology and capturing wet, average, and dry years.

All TMDLs need to be presented as a sum of waste load allocations (WLAs) for point sources and load allocations (LAs) for nonpoint sources generated within the assessment unit, accounting for natural background, tributary and adjacent segment loads.

FINAL

Furthermore, all TMDLs must include a margin of safety (MOS) to account for any lack of knowledge and uncertainty concerning the relationship between loads and water quality (CFR 2016a,b). It is proposed that the estimated variability around the reference watershed group used in this analysis already accounts for such uncertainty, and therefore the MOS is implicitly included. Because the sediment loading threshold was conservatively based on the median (50th percentile) sediment loading rates from reference watersheds, Maryland has adopted an implicit MOS for sediment TMDLs.

The Back River watershed total baseline sediment load is 4,319 tons per year (ton/yr). The Back River watershed baseline load contribution is further subdivided into a nonpoint source baseline load (Nonpoint Source BL_{BR}) and two types of point source baseline loads: National Pollutant Discharge Elimination System (NPDES) regulated stormwater (NPDES Stormwater BL_{BR}) and NPDES regulated wastewater (Wastewater BL_{BR}) (see Table ES-2). Sediment loads from the Back River wastewater treatment plant (WWTP) are not included in this analysis because it discharges into the tidal portion of the watershed, which is not included in this TMDL. Sediment loads from this facility were addressed in the 2010 Chesapeake Bay TMDL for sediment in the BACOH segment.

Table ES-2: Back River Watershed Baseline Sediment Loads (ton/yr)

Total Baseline Load (ton/yr)	=	Nonpoint Source BL_{BR}	+	NPDES Stormwater BL_{BR}	+	Wastewater BL_{BR}
4,319	=	72	+	4,133	+	114

Note: Baseline loads are estimated using CBP 5.3.2, 2009 Progress Scenario

The Back River Watershed average annual TMDL of TSS is 1,460 ton/yr (a 66% reduction from the baseline load). The Back River TMDL contribution is further subdivided into point and nonpoint source allocations and is comprised of a load allocation (LA_{BR}) of 72 ton/yr, an NPDES Stormwater Waste Load Allocation (NPDES Stormwater WLA_{BR}) of 1,274 ton/yr, and a Wastewater Load Allocation (Wastewater WLA_{BR}) of 114 ton/yr (see Table ES-3).

Table ES-3: Back River Watershed Average Annual TMDL of Sediment (ton/yr)

TMDL (ton/yr)	=	LA_{BR}	+	NPDES Stormwater WLA_{BR}	+	Wastewater WLA_{BR}	+	MOS
1,460	=	72	+	1,274	+	114	+	Implicit

Table ES-4: Back River Watershed Baseline Load, TMDL, and Total Reduction Percentage

FINAL

Baseline Load (ton/yr)	TMDL (ton/yr)	Total Reduction (%)
4,319	1,460	66

In addition to the TMDL value, a Maximum Daily Load (MDL) is also presented in this document. The calculation of the MDL, which is derived from the TMDL average annual loads, is explained in Appendix B and presented in Table B-1.

While this TMDL establishes a sediment loading target for the watershed, watershed managers and other stakeholders should always remain cognizant that the endpoint of this TMDL, and hence the definition of its successful implementation, is based on in-stream biological health. Load reductions are critical to tracking this effort, since the TMDL target is defined as the point where sediment loads match those seen in reference watersheds, but the watershed cannot be delisted or classified as meeting water quality standards until it is demonstrated that the biological health of the stream system is no longer impaired by sediment. In planning any implementation efforts related to this TMDL, careful consideration should be given both to the sediment load reductions, and to their direct potential impacts on biological communities.

Section 303(d) of the CWA and current USEPA regulations require reasonable assurance that the TMDL can and will be implemented. Once the USEPA has approved this TMDL and it is known what measures must be taken to reduce pollution levels, implementation of best management practices (BMPs) is expected to take place. The Back River Sediment TMDL is expected to be implemented as part of a staged process. MDE intends for the required reductions to be implemented in an iterative process that first addresses those sources with the largest impact to water quality, with consideration given to cost of implementation.

Implementation of the Back River Watershed Sediment TMDL is expected to occur in conjunction with implementation efforts to meet sediment target loads consistent with the 2010 Chesapeake Bay TMDLs. The Chesapeake Bay TMDLs were established by the USEPA in 2010 and are scheduled for full implementation by 2025 (USEPA 2010a). The Bay TMDLs require reductions of nitrogen, phosphorus, and sediment loads throughout the Bay watershed to meet water quality standards that protect the designated uses in the Bay and its tidal tributaries.

In addition, MDE published the Final Determinations to Issue Stormwater Permits to Baltimore City and Baltimore County in December 2013. The permits state, “*By regulation at 40 CFR §122.44, BMPs and programs implemented pursuant to this permit must be consistent with applicable WLAs developed under [US]EPA approved TMDLs.*” For TMDLs approved after these permits, implementation plans are due within one year of USEPA approval of the TMDL. Many of the practices which are described in the permittees’ stormwater WLA implementation plans may also be used by the permittees as retrofits for meeting their impervious area restoration requirements (20% retrofit for the 2014-2019 permit cycle).

FINAL

This TMDL will ensure that watershed sediment loads are at a level to support the designated uses for the Back River watershed, and more specifically, at a level to protect aquatic life. The TMDL, however, will not completely resolve the impairment to biological communities within the watershed. Since the BSID watershed analysis identifies other possible stressors impacting the biological conditions (e.g. chlorides, channelization), an additional TMDL or TMDLs may be needed to fully address the impacts to biological communities.

Many of the implementation actions to address sediment could concurrently address the other stressors identified in the BSID report. For example, a stream restoration project that reduces sediment loads could improve epifaunal substrate and in-stream habitat. Since biological improvements will likely only be seen when multiple structural and pollutant stressors are addressed, watershed managers developing plans to address sediment should consider the effect of restoration projects on other stressors. Where possible, preference should be given to designs that address multiple stressors.

1.0 INTRODUCTION

Section 303(d) of the federal Clean Water Act (CWA) and the U.S. Environmental Protection Agency's (USEPA) implementing regulations direct each state to identify and list waters, known as water quality limited segments (WQLSs), in which current required controls of a specified substance are inadequate to achieve water quality standards. For each WQLS, the State is required to either establish a TMDL of the specified substance that the waterbody can receive without violating water quality standards, or demonstrate that water quality standards are being met (CFR 2016b). This document, upon approval by the U.S. Environmental Protection Agency (USEPA), establishes a Total Maximum Daily Load (TMDL) for sediment in the non-tidal Maryland 8-Digit Back River watershed (2012 *Integrated Report of Surface Water Quality in Maryland* Assessment Unit ID: MD-02130901). In this TMDL report, the terms Total Suspended Solids (TSS) and sediment may be used interchangeably.

TMDLs are established to determine the pollutant load reductions needed to achieve and maintain water quality standards. A water quality standard is the combination of a designated use for a particular body of water and the water quality criteria designed to protect that use. Designated uses include activities such as swimming, drinking water supply, protection of aquatic life, and shellfish propagation and harvest. Water quality criteria consist of narrative statements and numeric values designed to protect the designated uses. Criteria may differ among waters with different designated uses. The Back River watershed is associated with two assessment units in Maryland's Integrated Report: a non-tidal 8-digit watershed (02130901) and an estuary portion [Back River Oligohaline (BACOH)]. A sediment TMDL for the BACOH was established as part of the Chesapeake Bay TMDLs in 2010. Background information on the tidal portion of the watershed is presented for informational purposes only.

The Maryland Department of the Environment (MDE) identified the waters of the Back River watershed on the State's 2014 Integrated Report as impaired by multiple pollutants including TSS, chlorides and sulfates (MDE 2014a). Table 1 identifies the impairment listings associated with this watershed. A data solicitation for TSS was conducted by MDE in September 2016, and all readily available data have been considered.

Table 1: Back River Integrated Report Listings

Watershed	Basin Code	Tidal/Non-tidal	Subwatershed	Designated Use Class	Year Listed	Identified Pollutant	Listing Category
Back River	02130901	Non-tidal		I - Aquatic Life and Wildlife	2012	TSS	5
						Chlorides	
						Sulfates	
						Lack of Riparian Buffer	4c
			Channelization				
			Back River 0213090140	I – Water Contact Sports	2002	Bacteria	4a
Herring Run 0213090141							
Herring Run 0213090142							
Back River Oligohaline	BACOH	Tidal		I - Aquatic Life and Wildlife	1996	TSS	4a
					1998	PCB	
					-	Zinc	2
					-	Impacts to biological communities	3
				II – Fishing	1996	Chlordane	4a
					2008	PCB in fish tissue	
					-	Mercury in fish tissue	2
				II – Seasonal Migratory Fish Spawning and Nursery Subcategory	1996	TN	4a
						TP	
				II – Open-Water Fish and Shellfish Subcategory	1996	TN	4a
						TP	

- Category 2 indicates the waterbody is meeting water quality standards for the identified substance
- Category 3 indicates insufficient data to make a listing category determination
- Category 4a indicates a TMDL has been completed and approved by EPA
- Category 4c indicates the cause of the impairment is pollution and not a pollutant
- Category 5 indicates that the waterbody is impaired and a TMDL or water quality analysis (WQA) is needed.

FINAL

The Maryland Surface Water Use Designation in the Code of Maryland Regulations (COMAR) for the Back River watershed's nontidal tributaries are designated as Use Class I - *water contact recreation, and protection of nontidal warmwater aquatic life* and Use Class IV - *recreational trout waters*. Tidal tributaries and the Back River mainstem are designated Use Class II - *support of estuarine and marine aquatic life and shellfish harvesting* (COMAR 2016a, b, c). A map of the Designated Use Classes is provided in Figure 1.

This document, upon approval by the USEPA, establishes a Total Maximum Daily Load (TMDL) for sediment in the non-tidal Maryland 8-Digit Back River watershed (2014 *Integrated Report of Surface Water Quality in Maryland* Assessment Unit ID: MD-02130901). In this TMDL report, the terms TSS and sediment may be used interchangeably.

The Back River watershed was originally listed for impacts to biological communities on the 2002 Integrated Report. The listing was based on the biological assessment methodology, which uses aquatic health scores, consisting of the Benthic Index of Biotic Integrity (BIBI) and Fish Index of Biotic Integrity (FIBI). These indices indicated that the biological metrics for the watershed exhibit a significant negative deviation from reference conditions (MDE 2014b).

In order to determine what stressor or stressors are impacting aquatic life, MDE's *Biological Stressor Identification* (BSID) methodology was applied (MDE 2009). The BSID analysis for the Back River watershed identified sediment, instream habitat, riparian habitat, low dissolved oxygen, and inorganic pollutants (i.e. chlorides, sulfates). The sediment parameter shows a significant association with degraded biological conditions due to bar formation, channel alteration, and high embeddedness. The instream habitat stressor group was significant due to channelization present, marginal to poor instream habitat structure, marginal to poor riffle/run quality, and marginal to poor velocity/depth diversity. The riparian habitat stressor group was significant due to the absence of riparian buffer. The water chemistry parameter group was significant due to low DO, high chlorides, high conductivity, and high sulfates. Additionally, the BSID identified, anthropogenic, urban, and impervious sources, as those that have led to the altered habitat heterogeneity and possible elevated suspended sediment in the watershed, which are the probable causes of impacts to biological communities. Further details of this analysis are presented in the 2012 document entitled, *Watershed Report for Biological Impairment of the Non-Tidal Back River Watershed in Baltimore City and Baltimore County, Maryland Biological Stressor Identification Analysis Results and Interpretation* (MDE 2012).

The objective of this TMDL is to ensure that watershed sediment loads are at a level that supports the Use Class I/IV designation for the Back River watershed. The TMDL will address water clarity problems and associated impacts to aquatic life in the Back River watershed caused by high sediment and TSS concentrations.

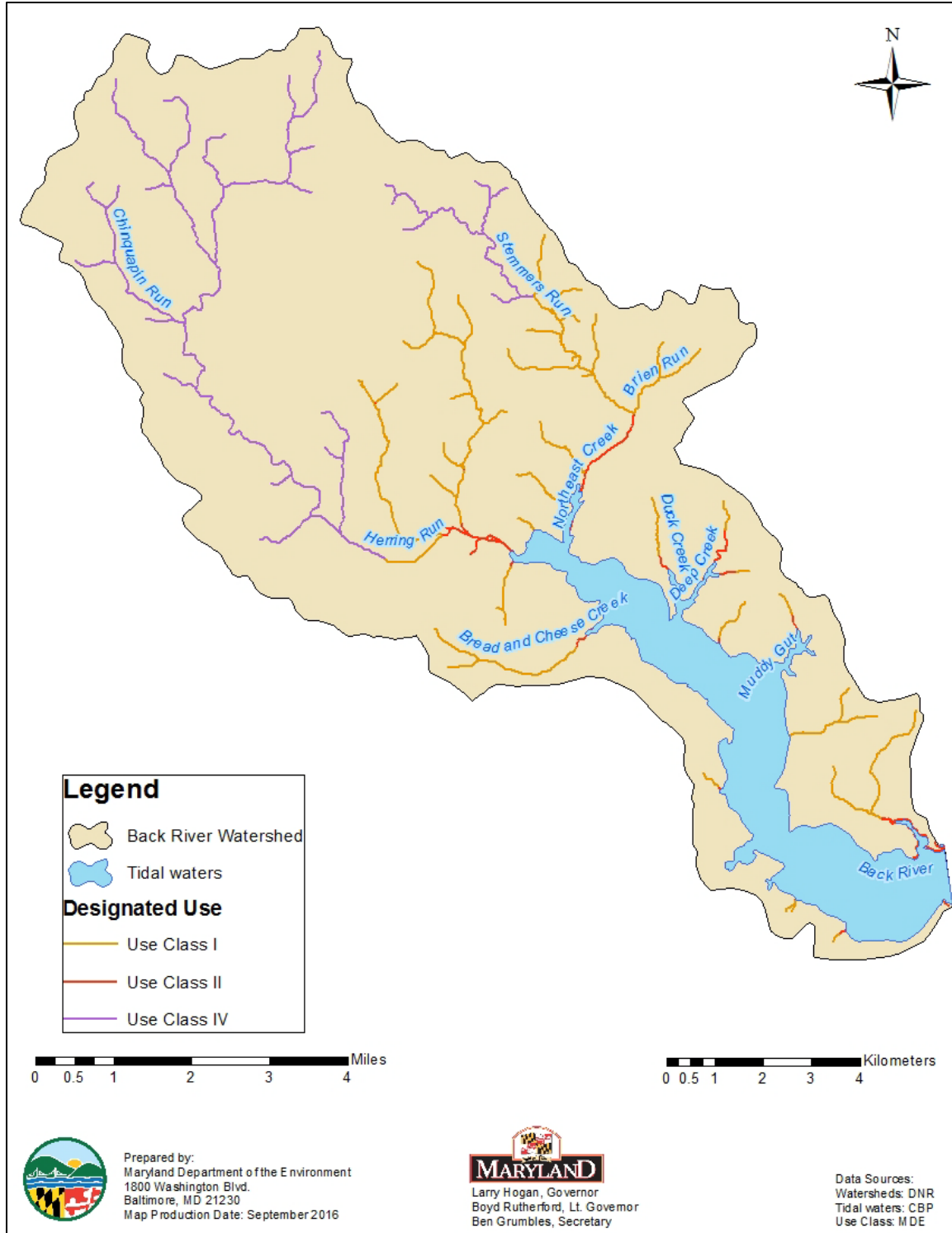


Figure 1: Designated Use Classes of the Back River Watershed in Baltimore City and Baltimore County, Maryland

2.0 SETTING AND WATER QUALITY DESCRIPTION

2.1 General Setting

Location

The Back River watershed is located in the western shore region of Maryland in Baltimore City and Baltimore County, northeast of the Baltimore Harbor, and drains into the Chesapeake Bay (see Figure 1). The basin is part of the Patapsco/Back River Tributary Strategy Basin. The watershed is located in the Coastal Plain and Piedmont regions, two of three distinct eco-regions identified in the Maryland Department of Natural Resources (MDDNR) Maryland Biological Stream Survey (MBSS) Index of Biological Integrity (IBI) metrics (Backerland *et al.* 2005). According to the Chesapeake Bay Program's Phase 5.3.2 watershed model, the total drainage area of the Maryland 8-digit watershed is approximately 34,800 acres, not including water/wetlands.

Approximately 185 acres of the watershed area is covered by water. The total population in the Back River watershed is approximately 255,000 (US Census Bureau 2010).

There are no "high quality," or Tier II, stream segments (BIBI and FIBI aquatic life assessment scores > 4 [scale 1-5]) located within the Back River watershed. Tier II segments would require the implementation of Maryland's anti-degradation policy (COMAR 2016d; MDE 2011).

Geology/Soils

The Back River watershed is located in the Coastal Plain and Piedmont Physiographic Provinces in Baltimore City and Baltimore County. The Piedmont Province is characterized by gentle to steep rolling topography, low hills and ridges. The surficial geology is characterized by crystalline rocks of volcanic and sedimentary origin consisting primarily of schist and gneiss. These formations are resistant to short-term erosion, and often determine the limits of stream banks and streambeds. These crystalline formations decrease in elevation from northwest to southwest within the Piedmont Province and eventually extend beneath the younger sediments of the Coastal Plain. The fall line represents the transition between the Atlantic Coastal Plain Province and the Piedmont Province. The Atlantic Coastal Plain surficial geology is characterized by thick, unconsolidated marine sediments deposited over the crystalline rock of the piedmont province (MGS 2012; MDE 2000).

The Back River watershed drains from northwest to southeast, following the dip of the underlying crystalline bedrock in the Piedmont Province. The surface elevations range from approximately 500 feet to sea level at the Chesapeake Bay shorelines. Stream channels of the sub-watersheds are well incised in the Eastern Piedmont, and exhibit relatively straight reaches and sharp bends, reflecting their tendency to following zones of fractured or weathered rock. The stream channels broaden abruptly as they flow down across the fall line and into the soft, flat Coastal Plain sediments (CES 1995).

FINAL

The United States Department of Agriculture (USDA) Natural Resources Conservation Service (NRCS) classifies soils into 4 hydrologic soil groups: Group A soils have high infiltration rates and are typically deep well drained/excessively drained sands or gravels; Group B soils have moderate infiltration rates and consist of soils that are moderately deep to deep and moderately well to well drained soils, with moderately fine/coarse textures; Group C soils have slow infiltration rates with a layer that impedes downward water movement, and they primarily have moderately fine-to-fine textures; Group D soils have very slow infiltration rates consisting of clay soils with a permanently high water table that are often shallow over nearly impervious material. The Back River watershed is comprised primarily of Group B soils (38.2%), Group C soils (38.7%), and Group D soils (21.5%), with a small portion of the watershed consisting of Group A soils (1.6%) (USDA 2006).

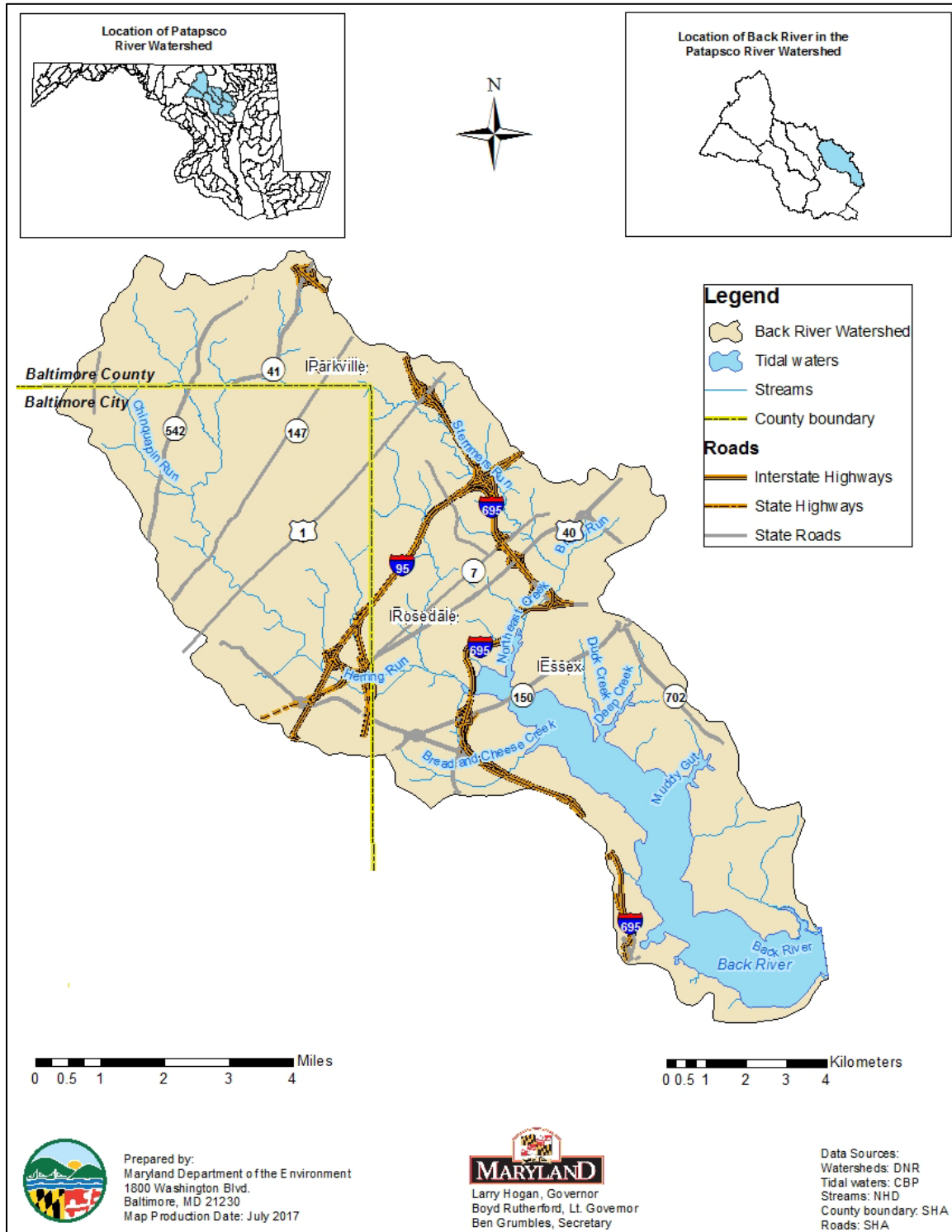


Figure 2: Location Map of the Back River Watershed in Baltimore City and Baltimore County, Maryland

2.1.1 Land-use

Land-use Methodology

The land-use framework used to develop this TMDL was originally developed for the Chesapeake Bay Program Phase 5.3.2 (CBP P5.3.2) Watershed Model.¹ The CBP P5.3.2 land-use was based on two distinct stages of development.

The first stage consisted of the development of the Chesapeake Bay Watershed Land-Cover Data (CBLCD) series of Geographic Information System (GIS) datasets. These datasets provide a 30-meter resolution raster representation of land-cover in the Chesapeake Bay watershed, based on sixteen Anderson Level two land-cover classes. The CBLCD basemap, representing 2001 conditions, was primarily derived from the Multi-Resolution Land Characteristics (MRLC) Consortium's National Land-Cover Data (NLCD) and the National Oceanic and Atmospheric Administration's (NOAA) Coastal Change Analysis Program's (CCAP) Land-Cover Data. By applying Cross Correlation Analysis to Landsat 5 Thematic Mapper and Landsat 7 Enhanced Thematic Mapper satellite imagery, CBLCD datasets for 1984, 1992, and 2006 were generated from the baseline 2001 dataset. The watershed model documentation, *Chesapeake Bay Phase 5.3 Community Watershed Model* (USEPA 2010b), describes the development of the CBLCD series in more detail. USGS and NOAA also developed an impervious cover dataset from Landsat satellite imagery for the CBLCD basemap, which was used to estimate the percent impervious cover associated with CBLCD developed land-cover classifications.

The second stage consisted of using ancillary information for: 1) the creation of a modified 2006 CBLCD raster dataset, and 2) the subsequent development of the CBP P5.3.2 land-use framework in tabular format. Estimates of the urban footprint in the 2006 CBLCD were extensively modified using supplemental datasets. Navteq street data (secondary and primary roads) and institutional delineations were overlaid with the 2006 CBLCD land-cover and used to reclassify underlying pixels. Certain areas adjacent to the secondary road network were also reclassified based on assumptions developed by USGS researchers, in order to capture residential development (*i.e.*, subdivisions not being picked up by the satellite in the CBLCD). In addition to spatially modifying the 2006 CBLCD, the following datasets were used to supplement the developed land cover data in the final CBP P5.3.2 land-use framework: US Census housing unit data, Maryland Department of Planning (MDP) Property View data, and estimates of impervious coefficients for rural residential properties (determined via a sampling of these properties using aerial photography). This additional information was used to estimate the extent of impervious area in roadways and residential lots. Acres of construction and extractive land-uses were determined independently using a method developed by USGS (Claggett, Irani, and Thompson 2012). Finally, in order to develop accurate agricultural land-use acreages, the CBP P5.3.2 incorporated county level US Agricultural Census data (USDA 1982, 1987, 1992, 1997, 2002). The watershed model documentation, *Chesapeake Bay*

FINAL

Phase 5.3 Community Watershed Model (USEPA 2010b), describes these modifications in more detail.

The result of these modifications is that CBP P5.3.2 land-use does not exist in a single GIS coverage; instead, it is only available in a tabular format. The CBP P5.3.2 watershed model is comprised of 30 land-uses. The land-uses are divided into 13 classes with distinct sediment erosion rates. Table 2 lists the CBP P5.3.2 generalized land-uses, detailed land-uses, which are classified by their sediment erosion rates, and the acres of each land-use in the Back River watershed. The land-use acreage used to inform this TMDL is based on the CBP P5.3.2 2009 Progress Scenario.

Back River Watershed Land-Use Distribution

The land-use distribution of the Back River watershed consists primarily of urban land (87.9%), and forest (11.2%). A detailed summary of the watershed land-use areas is presented in Table 2, and a land-use map is provided in Figure 3.

Table 2: Land-Use Percentage Distribution for the Back River Watershed

General Land Use	Detailed Land-Use	Area (Acres)	Percent of total (%)	Grouped Percent of Total
Forest	Forest	3,878	11.1%	11.2%
	Harvested Forest	38	0.1%	
AFOs	Animal Feeding Operations	0	0.0%	0.0%
CAFOs	Concentrated Animal Feeding Operations	0	0.0%	0.0%
Pasture	Pasture	21	0.1%	0.1%
Crop	Crop	77	0.2%	0.2%
Nursery	Nursery	0	0.0%	0.0%
Regulated Urban	Construction	312	0.9%	88.0%
	Developed	30,299	87.0%	
	Extractive	18	0.1%	
Water	Water	185	0.5%	0.5%
Total		34,827	100%	100.0%

Note: Individual values may not add to total load due to rounding.

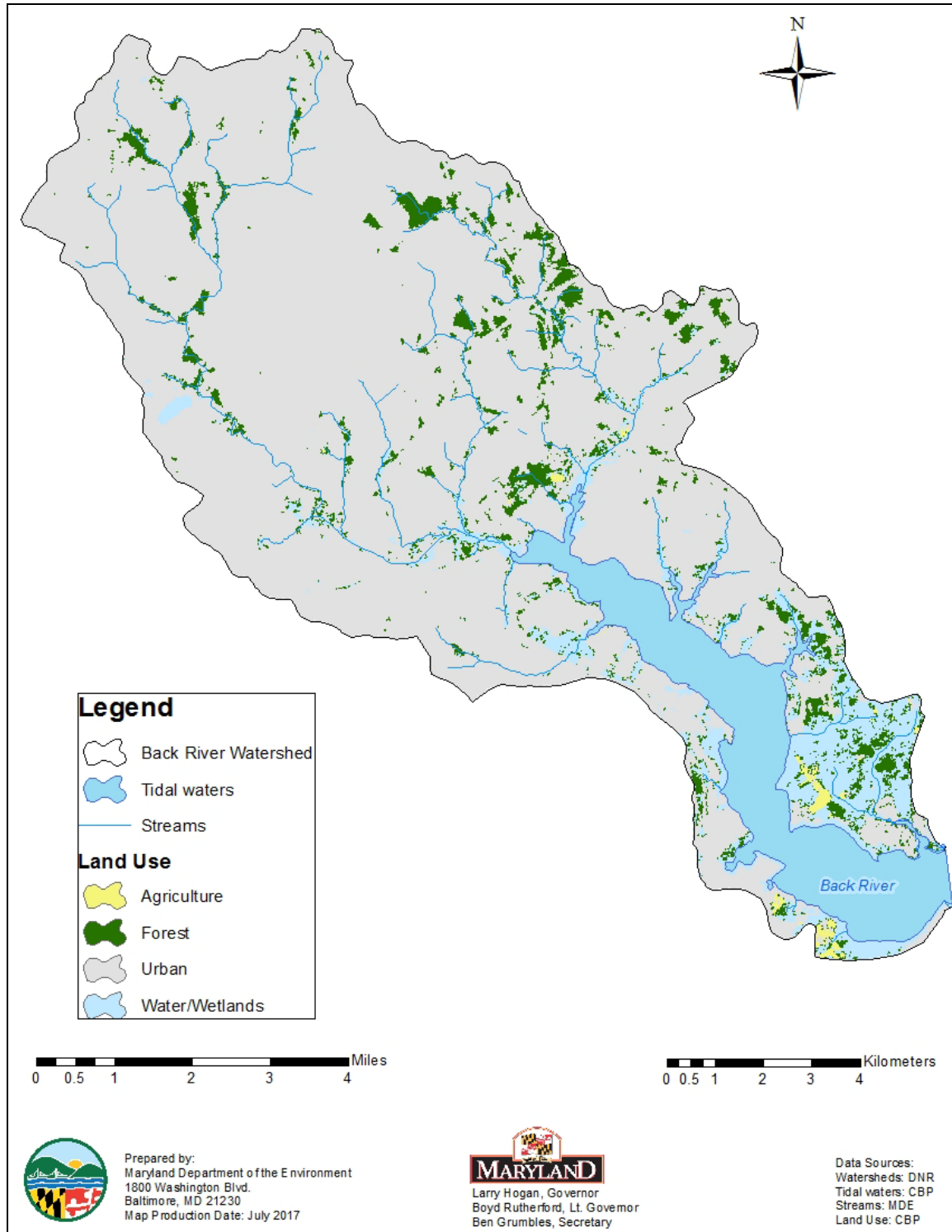


Figure 3: Land-use of the Back River Watershed

2.2 Source Assessment

The Back River watershed total baseline sediment load consists of nonpoint source loads, and point source loads which can be further divided into National Pollutant Discharge Elimination System (NPDES) Stormwater loads, and Wastewater loads. This section summarizes the methods used to derive each of these distinct source categories.

2.2.1 Nonpoint Source Assessment

In this document, the nonpoint source loads account for all sediment loads not covered under a NPDES permit within the Back River watershed. In general, these are rainfall driven land-use based loads from agricultural and forested lands. This section provides the background and methods for determining the nonpoint source baseline loads generated within the Back River watershed (Nonpoint Source BL_{BR}).

General Load Estimation Methodology

Nonpoint source sediment loads generated within the Back River watershed are estimated based on the *edge-of-stream* (EOS) loads from the CBP P5.3.2 watershed model 2009 Progress Scenario. Within the CBP P5.3.2 watershed model, EOS sediment loads are calculated based on the fact that not all of the *edge-of-field* (EOF) sediment load is delivered to the stream or river (some of it is stored on fields down slope, at the foot of hillsides, or in smaller rivers or streams that are not represented in the model). To calculate the actual EOS loads, a *sediment delivery factor* (SDF) (the ratio of sediment reaching a basin outlet compared to the total erosion within the basin) is used. Details of the methods used to calculate sediment load have been documented in the report entitled *Chesapeake Bay Phase 5 Community Watershed Model* (USEPA 2010b). A summary of the methodology is presented in the following sections.

Edge-of-Field Target Erosion Rate Methodology

Edge-of-field erosion can be defined as erosion or sediment loss from any particular land surface. EOF target erosion rates are the values used in the calibration of the CBP5.3.2 model, based on literature values. EOF target erosion rates for agricultural land-uses and forested land-use were based on erosion rates determined by the Natural Resource Inventory (NRI). NRI is a statistical survey of land-use and natural resource conditions conducted by the Natural Resources Conservation Service (NRCS) (USDA 2006). The sampling methodology is explained by Nusser and Goebel (1997).

Estimates of average annual erosion rates for pasture and cropland are available on a county basis at five-year intervals, starting in 1982. Erosion rates for forested land-uses are not available on a county basis from NRI; however, for the purpose of the Chesapeake Bay Program Phase 4.3 (CBP P4.3) watershed model, NRI calculated average annual erosion rates for forested land-use on a watershed basis. These rates were used as targets in the CBP P5.3.2 model.

FINAL

The average value of the 1982 and 1987 surveys was used as the basis for EOF target rates for pasture and cropland. Rates for urban pervious, urban impervious, extractive, and barren land were based on a combination of best professional judgment, literature analysis, and regression analysis. The EOF erosion rates do not reflect best management practices (BMPs) or other soil conservation policies introduced in the wake of the effort to restore the Chesapeake Bay. To compensate for this, BMPs are applied to the modeled EOS loads in the CBP P5.3.2 2009 Progress Scenario. BMP data, representing BMPs in place in 2009, was collected by the Chesapeake Bay Program (CBP), and TSS reduction efficiencies have been estimated by CBP for specific types of BMPs based on peer reviewed studies, data collected by local jurisdictions, and an analysis of available literature values. For further details regarding EOF erosion rates, please see Section 9.2.1 of the *Chesapeake Bay Phase 5 Community Watershed Model* (USEPA 2010b). Table 3 lists EOF erosion rates specific to Baltimore City and Baltimore County, where the Back River watershed is located.

Table 3: Baltimore City and Baltimore County Target EOF TSS Loading Rates (ton/acre/yr) by Land-Use

Land-use	Data Source	Baltimore City EOF TSS loading rate (ton/acre/yr)	Baltimore County Target EOF TSS loading rate (ton/acre/yr)
Forest	NRI (1987)	0.47	0.46
Harvested Forest	Literature values	3	3
Nursery	Equivalent to conventional till	2.57	12.26
Pasture	NRI average (1982-1987)	0.27	1.29
Animal Feeding Operations	NRI pasture average (1982-1987) multiplied by 9	2.57	12.26
Hay	Adjusted NRI average (1982-1987)	0.8	3.18
Conventional Till	Adjusted NRI average (1982 – 1987)	3.14	12.42
Conservation Till	Adjusted NRI average (1982 – 1987)	1.89	7.45
Pervious Urban	Regression Analysis	0.74	0.74
Extractive	Literature values/best professional judgment	10	10
Barren (Construction)	Literature values	23	23
Impervious Urban	Regression Analysis	5.18	5.18

Edge-of-Stream Sediment Loads

A portion of EOF sediment load is delivered to the stream or river. The remaining eroded sediment is stored on fields downslope, at the foot of hillsides, or in smaller rivers or streams that are unrepresented in the model. EOS sediment loads are the loads that enter the modeled river reaches. Modeled river reaches are those with discharges of 100 cubic feet per second (cfs) or greater. (Exceptions were made for some river reaches that had useful monitoring data but were less than 100 cfs.) EOS sediment loads represent not only the erosion from the land but all of the intervening processes of deposition on hillsides and sediment transport through smaller rivers and streams that are not represented in the Phase 5.3 Model. The influence of the sum of the processes is contained in the estimated sediment delivery factor (SDF), which represents the ratio between sediment transported at a watershed outlet and erosion generated in the watershed. The EOS load for a reach is, therefore, the integration of sediment load scour, transport, storage, and fate from all smaller watersheds and streams unrepresented in the model (USEPA 2010b).

The formula for the EOS load calculation within the CBP P5.3.2 watershed model is as follows:

$$\sum_i^n EOS = Acres_i * EOF_i * SDF_i \quad (\text{Equation 2.1})$$

where:

n = number of land-use classifications

i = land-use classification

EOS = Edge of stream load, tons per year (ton/yr)

Acres = acreage for land-use i

EOF = Edge-of-field erosion rate for land-use i, ton/acre/yr

SDF = sediment delivery factor for land-use i

2.2.2 Point Source Assessment

A list of active permitted point sources that contribute to the sediment load in the Back River watershed was compiled using best available resources. The types of permits identified include individual municipal water treatment permits, MS4 permits, general NPDES stormwater permits, and the general permit for stormwater discharges from construction sites. The permits can be grouped into two categories: wastewater and stormwater. The wastewater category includes those loads generated by continuous discharge sources whose permits have TSS limits, while other permits that do not meet these conditions are considered *de minimis* in terms of the total sediment load. The stormwater category includes all NPDES regulated stormwater discharges, including construction. The technical memorandum to this document, entitled *Point Sources of Sediment in the Non-Tidal Back River Watershed*, identifies all the wastewater permits

FINAL

and NPDES regulated stormwater discharges that contribute to the sediment load in the Back River watershed.

The baseline sediment loads for the wastewater permits (Wastewater BL_{BR}) are calculated based on an evaluation of permitted TSS limits and current Discharge Monitoring Report (DMR) data. The stormwater permits identified throughout the Back River watershed do not include numeric TSS limits. In the absence of TSS limits, the NPDES regulated stormwater baseline load (NPDES Stormwater BL_{BR}) is calculated using the CBP P5.3.2 Progress Scenario urban land-use EOS loads (as per Equation 2.1), similar to the approach for NPS loads outlined in Section 2.2.1. The technical memorandum to this document entitled *Point Sources of Sediment in the Non-Tidal Back River Watershed* provides detailed information regarding the calculation of the Back River watershed Wastewater BL_{BR} and NPDES Stormwater BL_{BR} .

2.2.3 Summary of Baseline Loads

Table 4 summarizes the Back River Watershed baseline sediment load, reported in ton/yr and presented in terms of Nonpoint Source Baseline Loads and NPDES Stormwater and Wastewater Baseline Loads.

Table 4: Back River Watershed Baseline Sediment Loads (ton/yr)

Total Baseline Load (ton/yr)	=	Nonpoint Source BL_{BR}	+	NPDES Stormwater BL_{BR}	+	Wastewater BL_{BR}
4,319	=	72	+	4,133	+	114

Note: Baseline loads are estimated using CBP 5.3.2, 2009 Progress Scenario

Table 5 presents a breakdown of Back River Watershed Total Baseline Sediment Load, detailing loads per land-use or other source category. The largest portion of the sediment load is from regulated urban sources.

Table 5: Detailed Baseline Sediment Loads Within the Back River Watershed^{1,2}

General Land Use	Detailed Land-Use	Tons	Percent (%)	Grouped Percent of Total
Forest	Forest	46	1.1	1
	Harvested Forest	3	0.1	
AFOs	Animal Feeding Operations	0.1	0	0
Pasture	Pasture	1	0	0
Crop	Crop	21	0.5	0.5
Nursery	Nursery	0.5	0	0
Regulated Urban	Construction	314	7.3	96
	Developed	3,809	88.2	
	Extractive	10	0.2	
Point Sources	Point Sources	114	2.6	2.5
Total		4,319	100.0%	100.0%

¹ Individual values may not add to total load due to rounding.

² Baseline sediment load values are based on CBP 5.3.2 2009 Progress Scenario

2.3 Water Quality Characterization

The Back River watershed was originally listed on Maryland’s 2002 Integrated Report as impaired for impacts to biological communities. To refine the listing for impacts to biological communities, Maryland conducted a stressor identification analysis. Details of this analysis are presented below and in the document entitled, *Watershed Report for Biological Impairment of the Back River Watershed in Baltimore City and Baltimore County, Maryland Biological Stressor Identification Analysis Results and Interpretation*.

Currently in Maryland, there are no specific numeric criteria for TSS. Therefore, to determine whether aquatic life is impacted by elevated sediment loads, MDE’s BSID methodology was applied. The primary goal of the BSID analysis is to identify the most probable cause(s) for observed biological impairments throughout MD’s 8-digit watersheds (MDE 2009).

The BSID analysis applies a case-control, risk-based, weight-of-evidence approach to identify potential causes of biological impairment. The risk-based approach estimates the strength of association between various stressors and an impaired biological community. The BSID analysis then identifies individual stressors as probable or unlikely causes of the poor biological conditions within a given watershed, and subsequently reviews ecological plausibility. Finally, the analysis concludes whether or not these individual stressors or groups of stressors are contributing to the impairment (MDE 2009).

FINAL

The primary dataset for BSID analysis includes MDDNR-MBSS Round 2 and Round 3 data (collected between 2000-2009) because it provides a broad spectrum of paired data variables, which allow for a more comprehensive stressor analysis. MDDNR-MBSS Round 1 can also be used if there is limited Round 2 and 3 data. The MBSS is a robust statewide probability-based sampling survey for assessing the biological conditions of 1st through 4th order, non-tidal streams (Klauda et al. 1998; Roth et al. 2005). It uses a fixed length (75 meter) randomly selected stream segment for collecting site level information within a primary sampling unit (PSU), also defined as a watershed. The randomly selected stream segments, from which field data are collected, are selected using either stratified random sampling with proportional allocation, or simple random sampling (Cochran 1977). The random sample design allows for unbiased estimates of overall watershed conditions. Thus, the dataset facilitated case-control analyses because: 1) in-stream biological data are paired with chemical, physical, and land-use data variables that could be identified as possible stressors; and 2) it uses a probabilistic statewide monitoring design.

The BSID analysis combines the individual stressors (physical and chemical variables) into three generalized parameter groups in order to assess how the resulting impacts of these stressors can alter the biological community and structure. The three generalized parameter groups include: sediment, habitat, and water chemistry. Identification of a sediment stressor as contributing to the biological impairment is based on the results of the individual stressor associations within the sediment parameter grouping, which reveal the effects of sediment related impacts on stream biota (MDE 2009).

Back River Watershed Monitoring Stations

A total of 21 water quality monitoring stations were used to characterize the Back River watershed for this TMDL. The biological assessment was based on the combined results of MBSS Round 1 and Round 2 data, which includes twenty-one stations. The BSID analysis used only stations from MBSS Round 2, which includes nine stations. There are no MBSS Round 3 stations in the Back River Watershed. All stations are listed in Table 6 and presented in Figure 4.

Table 6: Monitoring Stations in the Back River Watershed

Site Number	Sponsor	Site Type	Location	Latitude (decimal degrees)	Longitude (decimal degrees)
BA-N-001-211-96	DNR	MBSS Round 1	Stemmers Run	39.3503	-76.4964
BA-N-045-223-96	DNR	MBSS Round 1	Moores Run	39.3030	-76.5295
BA-N-047-128-96	DNR	MBSS Round 1	Redhouse Creek	39.3416	-76.5139
BA-N-065-215-96	DNR	MBSS Round 1	Stemmers Run	39.3655	-76.5143
BC-N-014-216-95	DNR	MBSS Round 1	Moores Run	39.3909	-76.5981
BC-N-014-217-96	DNR	MBSS Round 1	Moores Run	39.3599	-76.5093
BC-N-014-224-95	DNR	MBSS Round 1	Moores Run	39.2840	-76.4920
BC-N-015-202-96	DNR	MBSS Round 1	Herring Run	39.3624	-76.5078
BC-N-015-219-95	DNR	MBSS Round 1	Herring Run	39.3218	-76.5141
BC-P-003-205-95	DNR	MBSS Round 1	Herring Run	39.3228	-76.5342
BC-P-003-228-96	DNR	MBSS Round 1	Herring Run	39.3667	-76.5229
BC-P-004-107-96	DNR	MBSS Round 1	Chinquapin Run	39.3536	-76.5733
BACK-101-R-2002	DNR	MBSS Round 2	Herring Run, unnamed tributary	39.3416	-76.5814
BACK-105-R-2002	DNR	MBSS Round 2	Stemmers Run	39.3173	-76.5344
BACK-108-R-2002	DNR	MBSS Round 2	Bread and Cheese Creek	39.3335	-76.5368
BACK-110-R-2002	DNR	MBSS Round 2	Stemmers Run	39.3179	-76.5344
BACK-111-R-2002	DNR	MBSS Round 2	Redhouse Creek	39.3314	-76.5726
BACK-112-R-2002	DNR	MBSS Round 2	Moores Run	39.3264	-76.5668
BACK-113-R-2002	DNR	MBSS Round 2	Stemmers Run	39.3626	-76.5726
BACK-302-R-2002	DNR	MBSS Round 2	Herring Run	39.3592	-76.5728
BACK-306-R-2002	DNR	MBSS Round 2	Herring Run	39.3508	-76.5908

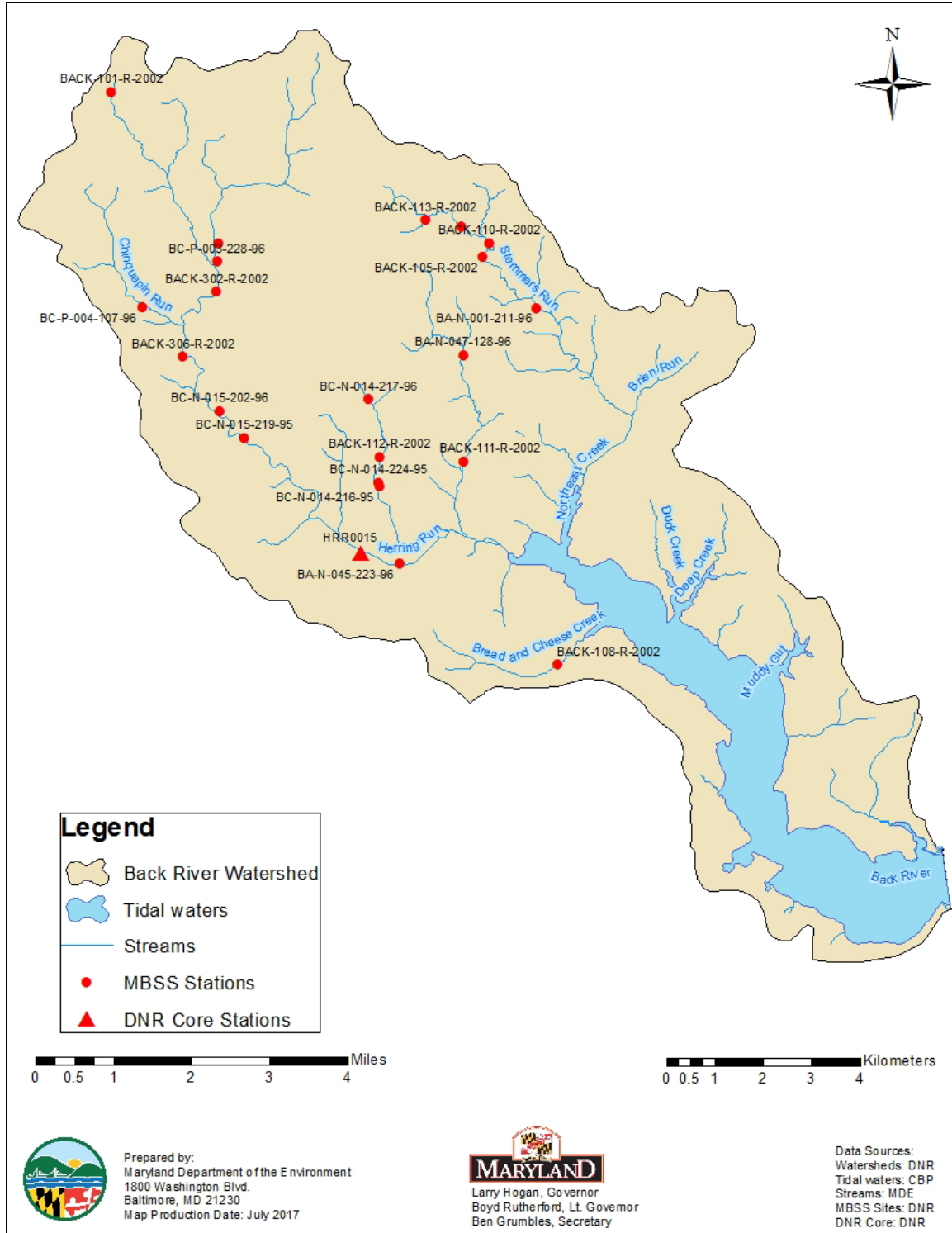


Figure 4: Monitoring Stations in the Back River Watershed

2.4 Water Quality Impairment

The Maryland Surface Water Use Designation in the Code of Maryland Regulations (COMAR) for the Back River watershed's nontidal tributaries are designated as Use Class I - *water contact recreation, and protection of nontidal warmwater aquatic life* and Use Class IV - *recreational trout waters*. Tidal tributaries and the Back River mainstem are designated Use Class II - *support of estuarine and marine aquatic life and shellfish harvesting* (COMAR 2016a, b, c).

The water quality impairment of the Back River watershed addressed by this TMDL is caused, in part, by an elevated sediment load beyond a level that the watershed can sustain; thereby causing sediment related impacts to aquatic life. Assessment of aquatic life is based on BIBI and FIBI scores, as demonstrated via the BSID analysis for the watershed.

The Back River watershed was originally listed on Maryland's 2002 Integrated Report as impaired for impacts to biological communities. The biological assessment was based on the combined results of MBSS Round 1 (1995-1997) and Round 2 (2000-2004) data, which included twenty-one stations. 100% of the stream miles in the watershed, were assessed as having BIBI and/or FIBI scores significantly lower than 3.0 (on a scale of 1 to 5) (MDE 2012b). See Figure 4 and Table 6 for station locations and information.

The results of the BSID analysis for the Back River watershed are presented in a report entitled *Watershed Report for Biological Impairment of the Non-Tidal Back River Watershed in Baltimore City and Baltimore County, Maryland Biological Stressor Identification Analysis Results and Interpretation*. The report states that the degradation of biological communities in the Back River watershed is strongly associated with anthropogenic impacts, bar formation, channel alteration, high embeddedness, channelization, no riparian buffer, high chlorides, high sulfate, high conductivity, and low dissolved oxygen (MDE 2012b).

The BSID analysis determined that the biological impairment in the Back River watershed is due in part to stressors within the sediment and instream habitat parameter groupings. Overall, stressors within the sediment parameter grouping were identified as having a statistically significant association with impaired biological communities at approximately 85% of the sites with BIBI and/or FIBI scores significantly less than 3.0 throughout the watershed (MDE 2012b). Therefore, since sediment is identified as a stressor to the biological communities in the Back River watershed, the watershed has been listed as impaired (Category 5) by sediment in the IR, and a TMDL is required.

FINAL

3.0 TARGETED WATER QUALITY GOAL

The objective of the sediment TMDL established herein is to reduce sediment loads, and their detrimental, negative effects on aquatic life in the Back River watershed, to levels that support the Use Class I/IV designations for the watershed. Excessive sediment has been identified by the USEPA as the leading cause of impairment of our nation's waters, and as contributing to the decline of populations of aquatic life in North America (USEPA 2003a). Sediment in streams may reduce visibility, preventing fish from seeing their prey, and may clog gills and filter feeding mechanisms of fish and benthic (bottom-dwelling) organisms. Excessive deposition of sediment on streambeds may bury eggs or larvae of fish and benthic macroinvertebrates, or degrade habitat by clogging the interstitial spaces between sand and gravel particles. Excessive sediment can also create hazards for recreation due to low visibility and the possibility of unseen objects.

The CWA requires TMDLs to be protective of all the designated uses applicable to a particular waterbody. The primary focus of this TMDL is the designated use of protection of aquatic life because the Integrated Report listing was based on a biological assessment of the watershed. However, the required reductions are expected to protect all designated uses of the watershed, including water contact recreation and recreational trout waters. Aquatic life is more sensitive to sediment impacts than recreation because aquatic life impacts result from continuous exposure that can affect respiration and propagation. Recreation, on the other hand, is sporadic and often avoided during times when sediment concentrations are likely to be highest (e.g. rainstorms). Sediment also poses no human health risk due to dermal contact or minimal ingestion that would occur during recreation. This TMDL's protection of aquatic life from sediment impacts includes protection of trout and, therefore, support the recreational trout waters designated use. Narrative sediment criteria for recreational trout waters (Use Class IV) are the same as that for Use Class I waters. Therefore, if the TMDL is at a sediment level to support aquatic life (Use Class I) it is also meeting sediment requirements for recreational trout waters. Additionally, nine of the eleven reference watersheds contain recreational trout waters. Therefore, it can be inferred that setting sediment values based on these reference watersheds would be supportive of trout waters.

Reductions in sediment loads are expected to result from decreased watershed erosion, which will then lead to improved benthic and fish habitat conditions. Specifically, sediment load reductions are expected to result in an increase in the number of benthic sensitive species present, an increase in the available and suitable habitat for a benthic community, a possible decrease in fine sediment (fines), and improved stream habitat diversity, all of which will result in improved water quality.

This TMDL will not completely resolve the impairment to biological communities within the watershed. Since the BSID watershed analysis also identifies inorganic pollutants and anthropogenic channelization as possible stressors impacting the biological conditions, additional TMDL or TMDLs may be needed to completely address the impacts to biological communities. This impairment to aquatic life will only be fully addressed

FINAL

when all impairing substances identified as impacting biological communities in the watershed are reduced to levels that will meet water quality standards, as established in future TMDLs for those substances (MDE 2009, 2012b).

4.0 TOTAL MAXIMUM DAILY LOADS AND SOURCE ALLOCATION

4.1 Overview

This section describes how the sediment TMDL and the corresponding allocations were developed for the Back River watershed.

4.2 Analysis Framework

Since there are no specific numeric criteria in Maryland that quantify the impact of sediment on the aquatic life of non-tidal stream systems, a reference watershed approach was used to establish the TMDL. In order to use a reference watershed approach, sediment loads must be estimated using a watershed model. For this analysis, the CBP P5.3.2 model was used to calculate the sediment loads used in the reference watershed approach.

Watershed Model

The CBP P5.3.2 watershed model was chosen to estimate the sediment loads for the Back River watershed TMDL and the loads were expressed as EOS sediment loads. The spatial domain of the CBP P5.3.2 watershed model segmentation aggregates to the MD 8-digit watersheds, which is with the scale of the impairment listing. The nonpoint source baseline sediment loads generated within the Back River watershed are based on the EOS loads from the CBP P5.3.2 watershed model 2009 Progress Scenario. CBP P5.3.2 Progress Scenario EOS loads are calculated as the sum of individual land-use EOS loads within the watershed and represent a long-term average loading rate. Individual land-use EOS loads are calculated within the CBP P5.3.2 watershed model as a product of the land-use area, land-use target EOF loading rate, and loss from the EOF to the main channel. BMP data and reduction efficiencies are then applied to produce the final EOS loads. The loss from the EOF to the main channel is the *sediment delivery factor* and is defined as the ratio of the sediment load reaching a basin outlet to the total erosion within the basin. A *sediment delivery factor* is estimated for each land-use type based on the proximity of the land-use to the main channel. Thus, as the distance to the main channel increases, more sediment is stored within the watershed (i.e., *sediment delivery factor* decreases). Details of the data sources for the unit loading rates can be found in Section 2.2 of this report.

Reference Watershed Approach

In order to quantify the impact of sediment on the aquatic life of non-tidal stream systems, a reference watershed TMDL approach was used. Reference watersheds are those watersheds that are identified as supporting aquatic life, based on Maryland's biological assessment methodology. The biological assessment methodology assesses biological impairment at the watershed scale based on the percentage of MBSS monitoring stations, translated into watershed stream miles, that have BIBI and/or FIBI scores lower than the Minimum Allowable IBI Limit (MAL). The MAL represents the threshold under which a watershed is listed as impaired for biology and is calculated based on the average annual allowable IBI value of 3.0 (on a scale of 1 to 5), the coefficient of variation of annual sentinel site results, and an assumed normal distribution. It accounts for annual variability and helps to avoid classification errors (i.e., false positives) when assessing for biological impairments (Roth *et al.* 1998, 2000; Stribling *et al.* 1998; MDE 2014b). For a full description of the selection of reference watersheds, please see *A Methodology for Addressing Sediment Impairments in Maryland's Nontidal Watersheds* (MDE 2006).

Comparison of sediment loads from impaired watersheds to loads from reference watersheds requires that the watersheds be similar in physical and hydrological characteristics. To satisfy this requirement, MDE 2006 selected reference watersheds only from the Highland and Piedmont physiographic regions. This region is consistent with the non-coastal region that was identified in the 1998 development of FIBI and subsequently used in the development of BIBI (Roth *et al.* 1998; Stribling *et al.* 1998). Reference groups for both the Coastal Plain and the Eastern Shore have also been defined using the same approach.

As stated in Section 2.1, the Back River Watershed lies within both the Coastal Plain and Piedmont physiographic eco-regions. There are multiple delineations available showing the extent of each ecoregion (USEPA 2016). For the purpose of MBSS sampling, MDDNR identifies three distinct ecoregions – Coastal Plain, Eastern Piedmont, and Highland. Each MBSS site is associated with one of these three eco-regions. The calculation of both FIBI and BIBI are customized based on ecoregion. Since the biological impairment is based on MBSS data, the ecoregions defined by the MBSS will be used in this TMDL. In the Back River watershed, 14 of the 21 sites used for the biological assessment are in the Piedmont region. Therefore, the Piedmont/Highland reference group is used for this TMDL.

To further reduce the effect of the variability within the Highland and Piedmont physiographic regions (i.e., soils, slope, etc.), the watershed sediment loads were then normalized by a constant background condition, the all forested watershed condition. This new normalized term, defined as the *forest normalized sediment load* (Y_n), represents how many times greater the current watershed sediment load is than the *all forested sediment load* (y_{for}). The y_{for} is a modeled simulation of what the sediment load would be if the watershed were in its natural all forested state, instead of its current mixed land use. It is calculated using the CBP P5.3.2 model. The *forest normalized*

FINAL

sediment load for this TMDL is calculated as the current watershed sediment load divided by the *all forested sediment load*. The equation for the *forest normalized sediment load* is as follows:

$$Y_n = \frac{y_{ws}}{y_{for}} \quad (\text{Equation 4.1})$$

Where:

Y_n = forest normalized sediment load

y_{ws} = current watershed sediment load (ton/yr)

y_{for} = all forested sediment load (ton/yr)

Eleven reference watersheds were identified in the Highland and Piedmont physiographic regions. Reference watershed *forest normalized sediment loads* were calculated using CBP P5.3.2 watershed model 2009 Progress Scenario EOS loads. The median and 75th percentile of the reference watershed *forest normalized sediment loads* were calculated and found to be 3.6 and 7.2 respectively. The median value of 3.6 was used as an environmentally conservative approach for establishing the sediment loading threshold for the TMDL (see Appendix A for more details).

The *forest normalized sediment load* for the Back River watershed, estimated as 10.4, was calculated using CBP P5.3.2 2009 Progress Scenario EOS loads, to best represent current conditions (See Calculation 4.1). Comparing the Back River watershed *forest normalized sediment load of 10.7* to the *forest normalized reference sediment load* (also referred to as the *sediment loading threshold*) of 3.6 demonstrates that the watershed exceeds the *sediment loading threshold*, indicating that it is receiving loads above the maximum allowable load that it can sustain and still meet water quality standards.

$$Y_n = \frac{y_{ws}}{y_{for}} = \frac{4,319 \text{ ton / yr}}{405 \text{ ton / yr}} = 10.7 \quad (\text{Calculation 4.1})$$

4.3 Scenario Descriptions and Results

The following analyses compare baseline conditions in the watershed (under which water quality problems exist) with potential future conditions, which project the water quality response to various simulated sediment load reductions. The analyses are grouped according to baseline conditions and future conditions associated with TMDLs.

Baseline Conditions

The baseline conditions are intended to provide a point of reference by which to compare the future scenario that simulates conditions of a TMDL. Baseline loads are calculated for nonpoint and point source loads. Point source loads can be subdivided into two categories, wastewater and stormwater.

FINAL

The Back River watershed baseline nonpoint source sediment loads are calculated using the land-use and EOS sediment loading rates from the CBP P5.3.2 2009 Progress Scenario. The 2009 Progress Scenario was chosen because it is used as the baseline year in the Chesapeake Bay TMDL. The 2009 Progress Scenario represents 2009 land-use and BMP implementation simulated using precipitation and other meteorological inputs from the period 1990-2000 to represent variable hydrological conditions, thereby addressing annual changes in hydrology and capturing wet, average and dry years. The period 1991-2000 is the hydrological simulation period for the Chesapeake Bay TMDL.

The baseline wastewater point source sediment loads are estimated based on the existing permit information. Details of these loading source estimates can be found in Section 2.2 and the technical memorandum to this document entitled *Point Sources of Sediment in the Patuxent River Lower Watershed*. The baseline stormwater point source sediment loads are based on CBP 5.3.2 loading rates, specifically those for urban land use.

TMDL Conditions

The TMDL scenario simulates conditions under which sediment loads have been reduced to levels that protect aquatic life. In the TMDL calculation, the allowable load for the impaired watershed is calculated as the product of the *sediment loading threshold* (determined from watersheds with a healthy biological community) and the Back River watershed *all forested sediment load* (see Section 4.2). The resulting load is considered the maximum allowable load the watershed can sustain and support aquatic life.

The TMDL loading and associated reductions are averaged at the watershed scale, however, it is important to recognize that some subwatersheds may require higher reductions than others, depending on the distribution of the land-use.

The formula for estimating the TMDL is as follows:

$$TMDL = \sum_{i=1}^n Yn_{ref} \cdot y_{for\ i} \quad (\text{Equation 4.2})$$

Where:

TMDL = allowable load for impaired watershed (ton/yr)

Yn_{ref} = sediment loading threshold = forest normalized reference sediment load

$y_{for\ i}$ = all forested sediment load for CBP P5.3.2 model segment i (ton/yr)

i = individual CBP P5.3.2 model segment

n = number of CBP P5.3.2 model segments in watershed

4.4 Critical Condition and Seasonality

USEPA's regulations require TMDLs to take into account seasonality and critical conditions for stream flow, loading, and water quality parameters (CFR 2016b). The intent of this requirement is to ensure that the water quality of the waterbody is protected during times when it is most vulnerable. The biological monitoring data used to determine the reference watersheds reflect the impacts of stressors (i.e., sediment impacts to stream biota) over the course of time and therefore depict an average stream condition (i.e., captures all high and low flow events). Since the TMDL endpoint is based on the median of forest normalized loads from watersheds assessed as having good biological conditions (i.e., passing Maryland's biological assessment), by the nature of the biological data described above, it must inherently include the critical conditions of the reference watersheds. Therefore, since the TMDL reduces the watershed sediment load to a level compatible with that of the reference watersheds, critical conditions are inherently addressed.

Seasonality is captured in two components. First, it is implicitly included through the use of the biological monitoring data as this data reflects the impacts of stressors over time, as described above. Second, the MBSS dataset included benthic sampling in the spring (March 1 - April 30) and fish sampling in the summer (June 1 - September 30). Benthic sampling in the spring allows for the most accurate assessment of the benthic population, and therefore provides an excellent means of assessing the anthropogenic effects of sediment impacts on the benthic community. Fish sampling is conducted in the summer when low flow conditions significantly limit the physical habitat of the fish community, and it is therefore most reflective of the effects of anthropogenic stressors as well. Moreover, the sediment loading rates used in the TMDL were determined using the CBP P5.3.2 model which is a continuous simulation model with a simulation period 1991-2000, based on Hydrological Simulation Program Fortran (HSPF) model, thereby addressing annual changes in hydrology and capturing wet, average, and dry years.

4.5 TMDL Loading Caps

This section presents the Back River watershed average annual sediment TMDL. This load is considered the maximum allowable long-term average annual load the watershed can sustain and support aquatic life.

The long-term average annual TMDL was calculated for the Back River watershed based on Equation 4.2 and set at a load 3.6 times the all forested condition of the watershed. In order to attain the TMDL loading cap calculated for the watershed, reductions were applied to the predominant sediment sources, independent of jurisdiction. Sediment reductions are also required in the Back River watershed to meet the allocations assigned under the 2010 Chesapeake Bay TMDL for sediment in the Back River Oligohaline Water Quality Segment. To ensure consistency with the Bay TMDL, and therefore efficiency in the reduction of sediment loads, reductions will be applied to the same sediment sources identified in Maryland's Watershed Implementation Plans (WIPs) for the Bay TMDLs, as applicable in the watershed. These include: (1) regulated developed

FINAL

land; (2) conventional till crops, conservation till crops, hay, and pasture; (3) harvested forest; (4) unregulated animal feeding operations and concentrated animal feeding operations (CAFOs); and (5) industrial process sources and municipal wastewater treatment plants. In this watershed, reductions were only applied to regulated developed land. Forest land is not assigned reductions because it is considered the most natural condition in the watershed.

The Back River Watershed Baseline Load and TMDL are presented in Table 7.

Table 7: Back River Watershed Baseline Load and TMDL

Baseline Load (ton/yr)	TMDL (ton/yr)	Total Reduction (%)
4,319	1,460	66

4.6 Load Allocations Between Point and Nonpoint Sources

Per USEPA regulation, all TMDLs need to be presented as a sum of Wasteload Allocations (WLAs) for point sources and Load Allocations (LAs) for nonpoint source loads generated within the assessment unit, accounting for natural background, tributary, and adjacent segment loads (CFR 2016a). The State reserves the right to allocate the TMDL among different sources in any manner that protects aquatic life from sediment related impacts.

Load Allocation

Individual LAs for each nonpoint land-use sector were calculated using the allocation methodology in the MD Phase I WIP, which was designed to be equitable, effective, and consistent with water quality standards (MDE 2010). The allocations were calculated by applying equal reductions to the *reducible* loads of all sectors. The *reducible* load is defined as the difference between the No Action (NA) scenario and the “Everything, Everyone, Everywhere” (E3) scenario. The NA scenario represents current land-uses without any sediment controls applied, while the E3 scenario represents the application of all possible BMPs and control technologies to current land-use. For more detailed information regarding the calculation of the LA, please see *Maryland’s Phase I Watershed Implementation Plan for the Chesapeake Bay Total Maximum Daily Load*.

In this watershed, there were no predominant nonpoint sources of sediment that required reductions. Sediment loads from urban lands are regulated under National Pollutant Discharge Elimination System (NPDES) permits and are considered point source loads that must be included in the Waste Load Allocation (WLA) portion of a TMDL (US EPA 2002). All other land uses individually contributed less than 1% of the total load and were not reduced, as they would produce no discernible reductions. Forest is not assigned reductions, as it represents the most natural condition in the watershed.

In this document, the LA for the Back River watershed is expressed as one aggregate value for all nonpoint sources. For more detailed information regarding the Back River

FINAL

watershed TMDL nonpoint source LA, please see the technical memorandum to this document entitled *Nonpoint Sources of Sediment in the Back River Watershed*.

A summary of the baseline and load allocation for nonpoint sources is presented in Table 8. The percent reduction shown in Table 8 does not represent the reduction applied to reducible loads, but the required reduction between the allocation and the baseline load.

Table 8: Back River Watershed TMDL Reductions by Source Category

	Baseline Load Source Categories		Baseline Load (ton/yr)	TMDL Components	TMDL (ton/yr)	Reduction (%)
Back River Watershed Contribution	Nonpoint Source		72	LA	72	0%
	Point Source	NPDES Stormwater	4,133	WLA	1,274	69%
		Wastewater	114		114	0%
Total			4,319		1,460	66%

Wasteload Allocation

The WLA of the Back River watershed is allocated to two permitted source categories, the Wastewater WLA and the Stormwater WLA. The categories are described below.

Wastewater WLA

Wastewater permits with specific TSS limits and corresponding flow information are assigned a WLA. In this case, detailed information is available to accurately estimate the WLA. If specific TSS limits are not explicitly stated in the wastewater permit, then TSS loads are expected to be *de minimis*. If loads are *de minimis*, they pose little or no risk to the aquatic environment and they are not a significant source.

Wastewater permits with specific TSS limits include:

- Individual industrial facilities
- Individual municipal facilities
- General mineral mining facilities

There is one municipal water treatment plant source with explicit TSS limits in the Back River watershed that contributes to the watershed sediment load. The Back River WWTP is not included in this TMDL because it discharges into the tidal portion of the watershed, which is not included in this TMDL. Loads from this facility were addressed in the 2010 Chesapeake Bay TMDLs for nutrients and sediments in the Back River Oligohaline

FINAL

segment (BACOH). There are no industrial or general mining facilities with permits regulating their discharge of sediment in the watershed. The total estimated TSS load from the wastewater source is based on current permit limits and DMR data and is equal to 114 ton/yr. No reduction was applied to this source, since such controls would produce no discernible water quality benefit when regulated stormwater sources comprise approximately 87% of the total watershed sediment load. For a detailed list of wastewater permits, please see the technical memorandum entitled *Point Sources of Sediment in the Back River Watershed*.

Stormwater WLA

Per USEPA requirements, “stormwater discharges that are regulated under Phase I or Phase II of the NPDES stormwater program are point sources that must be included in the WLA portion of a TMDL” (USEPA 2002). Phase I and II permits can include the following types of discharges:

- Small, medium, and large municipal separate storm sewer systems (MS4s) – these can be owned by local jurisdictions, municipalities, and state and federal entities (e.g., departments of transportation, hospitals, military bases),
- Industrial facilities permitted for stormwater discharges, and
- Small and large construction sites.

USEPA currently recommends that when information allows, WLAs for NPDES-regulated stormwater discharges be apportioned to different dischargers based on identifiable categories (e.g., separate WLAs for MS4 and industrial stormwater discharges). These categories should be defined as narrowly as available information allows (e.g., for municipalities, separate WLAs for each municipality and for industrial sources, separate WLAs for different types of industrial stormwater sources or dischargers). In general, states are encouraged to disaggregate the WLA, to facilitate implementation (USEPA 2014).

The Back River NPDES Stormwater WLA is based on reductions applied to the sediment load from the portion of the urban land-use in the watershed associated with the applicable NPDES regulated stormwater permits. The reduction methodology is described above in the Load Allocation section. Some NPDES Stormwater sources may also be subject to controls from other management programs. The Back River NPDES Stormwater WLA requires an overall reduction of 69% (see Table 8).

As stormwater assessment and/or other program monitoring efforts result in a more refined source assessment, MDE reserves the right to revise the current NPDES Stormwater WLA provided the revisions protect aquatic life from sediment related impacts.

FINAL

For more information on the methods used to calculate the NPDES regulated stormwater baseline sediment load, see Section 2.2.2. For a detailed list of all of the NPDES regulated stormwater discharges within the watershed and information regarding the NPDES stormwater WLA distribution amongst these discharges, please see the technical memorandum to this document entitled *Point Sources of Sediment in the Back River Watershed*.

4.7 Margin of Safety

All TMDLs must include a margin of safety (MOS) to account for any lack of knowledge and uncertainty concerning the relationship between loads and water quality (CFR 2016b). The MOS shall also account for any rounding errors generated in the various calculations used in the development of the TMDL. This TMDL was developed using an environmentally conservative approach that implicitly incorporates an MOS. Specifically, as was described in Section 4.2, the reference watershed forest normalized EOS loads were chosen in a conservative manner. Analysis of the reference group *forest normalized sediment loads* indicates that the 75th percentile of the reference watersheds is a value of 7.2 and that the median value 3.6. Achieving a 75th percentile forest normalized sediment load would assure that the watershed falls within the range of unimpaired watersheds. However, for this analysis, the *forest normalized reference sediment load* (also referred to as the *sediment loading threshold*) was set at the median value of 3.6 (MDE 2006). Use of the median as the threshold creates an environmentally conservative estimate, and results in an implicit MOS.

4.8 Summary of Total Maximum Daily Loads

The average annual non-tidal Back River watershed TMDL is summarized in Table 9. The TMDL is the sum of the LA, NPDES Stormwater WLA, Wastewater WLA, and MOS. The attainment of water quality standards within the non-tidal Back River watershed can only be achieved by meeting the average annual TMDL of sediment specified for the watershed within this report. The Maximum Daily Load (MDL) is summarized in Table 10 (See Appendix B for more details).

Table 9: Back River Watershed Average Annual TMDL of Sediment (ton/yr)

TMDL (ton/yr)	=	LA_{BR}	+	NPDES Stormwater WLA_{BR}	+	Wastewater WLA_{BR}	+	MOS
1,460	=	72	+	1,274	+	114	+	Implicit

Table 10: Back River Watershed Maximum Daily Load of Sediment (ton/day)

MDL (ton/day)	=	LA_{BR}	+	NPDES Stormwater WLA_{BR}	+	Wastewater WLA_{BR}	+	MOS
6.8	=	0.3	+	5.5	+	1	+	Implicit

FINAL

5.0 ASSURANCE OF IMPLEMENTATION

Section 303(d) of the CWA and current USEPA regulations require reasonable assurance that the sediment TMDL can and will be implemented (CFR 2016b). This section provides the basis for reasonable assurance that the sediment TMDL in the Back River watershed will be achieved and maintained.

While this TMDL establishes a sediment loading target for the watershed, watershed managers and other stakeholders should always remain cognizant that the endpoint of this TMDL, and hence the definition of its successful implementation, is based on in-stream biological health. Load reductions are critical to tracking this effort, since the TMDL target is defined as the point where sediment loads match those seen in reference watersheds, but the watershed cannot be delisted or classified as meeting water quality standards until it is demonstrated that the biological health of the stream system is no longer impaired by sediment. In planning any implementation efforts related to this TMDL, careful consideration should be given both to the sediment load reductions, and to the direct potential impacts on biological communities.

2010 Chesapeake Bay TMDLs

Implementation of the TMDL for sediment in the Back River watershed is expected to occur in parallel with implementation efforts for the 2010 Chesapeake Bay TMDLs for nutrients and sediment in the oligohaline Back River. While the objectives of the two efforts differ, with the 2010 Bay TMDLs focused on tidal water quality and this TMDL targeting biological integrity in non-tidal streams, many of the sediment reductions achieved through implementation activities should result in progress toward both goals.

The strategies for implementing the 2010 Bay TMDLs are described in Maryland's Phase I WIP (MDE 2010) and Phase II WIP (MDE 2012b). The WIPs are the centerpieces of the State's "reasonable assurance" of implementation for the 2010 Bay TMDLs, and the strategies encompass a host of BMPs, pollution controls and other actions for all source sectors that cumulatively will result in meeting the State's 2025 targets, as verified by the Chesapeake Bay Water Quality Sediment Transport Model. In particular, the implementation of practices to reduce sediment loadings from the urban stormwater sectors should result in decreased loads in the Back River watershed's non-tidal streams.

MS4 Permit Implementation Plans

MDE published the Final Determination to Issue Stormwater Permits to Baltimore City and Baltimore County in December 2013. The permits state, "*By regulation at 40 CFR §122.44, BMPs and programs implemented pursuant to this permit must be consistent with applicable WLAs developed under [US]EPA approved TMDLs.*"

Section IV.E. of the permit details requirements for *Restoration Plans and Total Maximum Daily Loads*. Within one year of permit issuance, the permittee is required to submit an implementation plan for each stormwater WLA approved by the USEPA prior

FINAL

to the effective date of the permit. For TMDLs approved after the permit, implementation plans are due within one year of the USEPA approval of the TMDL. Implementation plans should include the following: a detailed implementation schedule, the final date for meeting applicable WLAs, a detailed cost estimate for all elements of the plan, a system that evaluates and tracks implementation through monitoring or modeling to document progress towards meeting established benchmarks, deadlines, and stormwater WLAs, and a public participation program. An annual TMDL assessment report shall also be submitted to MDE. Many of the practices which are described in the permittees' stormwater WLA implementation plans may also be used by the permittees as retrofits for meeting their impervious area restoration requirements.

Stormwater retrofits can address both water quality and quantity. Examples of these retrofits include the reduction of impervious surfaces, modification of existing or installation of new stormwater structural practices, increased urban tree canopy, and stream restoration projects. Based on estimates by CBP, stormwater retrofit reductions range from as low as 10% for dry detention, to approximately 80% for wet ponds, wetlands, infiltration practices, and filtering practices (USEPA 2003b).

For more information on the MS4 permits, please see [Maryland's NPDES Municipal Separate Storm Sewer System \(MS4\) Permits](#).

Implementation of Agricultural Best Management Practices

In agricultural areas comprehensive soil conservation plans can be developed that meet criteria of the USDA-NRCS Field Office Technical Guide (USDA 1983). Soil conservation plans help control erosion by modifying cultural practices or structural practices. The reduction percentage attributed to cultural practices is determined based on changes in land-use, while structural practices have a reduction percentage of up to 25%. In addition, sediment loadings from livestock can be controlled via stream fencing and rotational grazing. Sediment reduction efficiencies of methods applicable to pasture land-use range from 40% to 75% (USEPA 2004). Lastly, riparian buffers can reduce the effect of agricultural sediment sources through trapping and filtering.

Maryland Funding Programs

In response to the WIP and the increased responsibility for local governments to achieve nutrient and sediment reduction goals, Maryland has continued to increase funding in the Chesapeake and Atlantic Coastal Bays Trust Fund. According to 'A Report to the Maryland General Assembly pursuant to the 2015 Joint Chairman's Report' about Section 40 of Maryland's Operating Budget, even though the annual restoration funds for the four agencies (MDDNR, MDA, MDE, MDP) varies from year to year, the total restoration funds for the first three years of the Chesapeake Bay WIP implementation evaluated time period (FY00 – FY02) was \$882,327,165, while the total for the past four years of the period (FY12 – FY15) was \$2,383,507,560, an increase of 170 percent. This increase was driven in part by the two primary Bay restoration Special Funds: The Bay Restoration Fund and the Chesapeake and Atlantic Coastal Bays Trust Fund (MDE *et al.*,

FINAL

2016). For more information on Maryland's implementation and funding strategies to achieve nutrient and sediment reductions throughout the State's portion of the Chesapeake Bay watershed, please see [Maryland's Phase II Watershed Implementation Plan](#).

Some other examples of programs that can provide funding for local governments and agricultural sources include the Federal Nonpoint Source Management Program (§ 319 of the Clean Water Act), the Buffer Incentive Program (BIP), the State Water Quality Revolving Loan Fund and the Maryland Agricultural Water Quality Cost-Share Program.

In summary, through the use of the aforementioned funding mechanisms and BMPs, there is reasonable assurance that this TMDL can be implemented.

Additional Biological Stressors

As has been stated previously in this report, the biological impairment in this watershed is due to multiple stressors, not just sediment. While reducing TSS might bring about a water quality impact in terms of clarity, achieving a positive impact in stream biological communities might require several stressors to be addressed. These stressors were described in the Back River BSID report.

The BSID identified chlorides and sulfates as chemical stressors significantly associated with degraded biological conditions in this watershed. This Back River was listed on Category 5 of the 2014 Integrated Report for both pollutants, and will require additional TMDLs. Furthermore, the BSID identified inadequate riparian buffer zones and channelization as other likely causes of degraded biological communities. Based on the report's recommendation, both pollutants were included on the listing of impaired waters as Category 4c, a list that covers water body impairments that are not caused by a pollutant.

Many of the implementation actions to address sediment could concurrently address the other stressors identified in the BSID report. For example, a stream restoration project that reduces sediment loads could improve instream habitat. Since biological improvements will likely only be seen when multiple structural and pollutant stressors are addressed, watershed managers developing plans to address sediment should consider the effect of restoration projects on other stressors. Where possible, preference should be given to designs that address multiple stressors.

FINAL

REFERENCES

- Ator, S. J., J. M. Denver, and M. J. Brayton. 2005. Hydrologic and Geochemical Controls on Pesticide and Nutrient Transport to Two Streams on the Delmarva Peninsula. *US Geological Survey National Water Quality Inventory Program Scientific Investigations Report: 2004-5051*.
- Backerland, M. T., G. M. Rogers, R. J. Kline, R. P. Morgan, D. M. Boward, P. F. Kazyak, R. J. Klauda and S. A. Stranko. 2005. New biological indicators to better assess the condition of Maryland Streams. Columbia, MD: Versar, Inc. with Maryland Department of Natural Resources, Monitoring and Non-Tidal Assessment Division. CBWP-MANTA-EA-05-13. Available at http://www.dnr.state.md.us/streams/pubs/ea-05-13_new_ibi.pdf
- Baish, A. S., and M. J. Caliri. 2009. *Overall Average Stormwater Effluent Removal Efficiencies for TN, TP, and TSS in Maryland from 1984-2002*. Baltimore, MD: Johns Hopkins University.
- Baldwin, A. H., S. E. Weammert, and T. W. Simpson. 2007. *Pollutant Load Reductions from 1985-2002*. College Park, MD: Mid Atlantic Water Program.
- Bell, W.H., and P. Favero, 2000. *Moving Water: A Report to the Chesapeake Bay Cabinet by the Public Drainage Taskforce*. Chestertown, MD: Washington College, Center for the Environment and Society.
- CES (Coastal Environmental Service, Inc.). 1995. Patapsco/Back River Watershed Study, prepared for the MDE and TARSA, September 30, 1995.
- CFR (Code of Federal Regulations). 2016a. *40 CFR 130.2(i)*. http://www.ecfr.gov/cgi-bin/text-idx?SID=58d75c79bf1f4aa70a28b3abaffaa54d&mc=true&node=pt40.24.130&rgn=div5#se40.24.130_12 (Accessed October 2016).
- _____. 2016b. *40 CFR 130.7*. http://www.ecfr.gov/cgi-bin/text-idx?SID=58d75c79bf1f4aa70a28b3abaffaa54d&mc=true&node=pt40.24.130&rgn=div5#se40.24.130_17 (Accessed October 2016).
- Claggett, P., F. M. Irani, and R. L. Thompson. 2012. *Estimating the Extent of Impervious Surfaces and Turf Grass across Large Regions*. Annapolis, MD: United States Geological Survey, Chesapeake Bay Program Office.
- Claytor, R., and T. R. Schueler. 1997. *Technical Support Document for the State of Maryland Stormwater Design Manual Project*. Baltimore, MD: Maryland Department of the Environment.
- Cochran, W. G. 1977. *Sampling Techniques*. New York: John Wiley and Sons.

FINAL

COMAR (Code of Maryland Regulations). 2016a. 26.08.02.02 B(1,3,5&7); 26.08.02.02-1. <http://www.dsd.state.md.us/comar/comarhtml/26/26.08.02.02.htm> (Accessed July 2016).

_____. 2016b. 26.08.02.08 L(2)(c)(f)(iii).
<http://www.dsd.state.md.us/comar/comarhtml/26/26.08.02.08.htm> (Accessed July 2016).

_____. 2016c. 26.08.02.07 A.
<http://www.dsd.state.md.us/comar/comarhtml/26/26.08.02.07.htm> (Accessed July 2016).

_____. 2016d. 26.08.02.04.
<http://www.dsd.state.md.us/comar/comarhtml/26/26.08.02.04.htm> (Accessed July 2016).

Klauda, R., P. Kazyak, S. Stranko, M. Backerland, N. Roth, and J. Chaillou. 1998. The Maryland Biological Stream Survey: A State Agency Program to Assess the Impact of Anthropogenic Stresses on Stream Habitat Quality and Biota. *Environmental Monitoring and Assessment* 51: 299-316.

MDE (Maryland Department of the Environment). 2000. An Overview of Wetlands and Water Resources of Maryland. Baltimore, MD: Maryland Department of the Environment.

_____. 2006. *A Methodology for Addressing Sediment Impairments in Maryland's Non-tidal Watersheds*. Baltimore, MD: Maryland Department of the Environment. Also Available at
http://www.mde.state.md.us/assets/document/Sediment%20TMDL%20Method%20Report_20070728.pdf

_____. 2008. *The 2008 Integrated Report of Surface Water Quality in Maryland*. Baltimore, MD: Maryland Department of the Environment. Also Available at
http://www.mde.maryland.gov/programs/Water/TMDL/Integrated303dReports/Pages/Programs/WaterPrograms/TMDL/maryland%20303%20dlist/2008_final_303d_list.aspx.

_____. 2009. *Maryland Biological Stressor Identification Process*. Baltimore, MD: Maryland Department of the Environment. Also Available at
http://staging.mde.state.md.us/programs/Water/TMDL/Documents/www.mde.state.md.us/assets/document/BSID_Methodology_Final.pdf.

_____. 2011. *Maryland Tier II Dataset*. Baltimore, MD: Maryland Department of the Environment.

FINAL

_____. 2012a. *Maryland's Phase II Watershed Implementation Plan for the Chesapeake Bay Total Maximum Daily Load*. Baltimore, MD: Maryland Department of the Environment. Also available at http://www.mde.state.md.us/programs/Water/TMDL/TMDLImplementation/Pages/FINAL_PhaseII_WIPDocument_Main.aspx.

_____. 2012b. *Watershed Report for Biological Impairment of the Back River Watershed in Baltimore City and Baltimore County, Maryland Biological Stressor Identification Analysis Results and Interpretation*. Baltimore, MD: Maryland Department of the Environment. Also available at: http://www.mde.state.md.us/programs/Water/TMDL/Documents/BSID_Reports/Lower_Back_BSID_Report_012512_revisedfinal.pdf.

_____. 2014a. *2014 Integrated Report of Surface Water Quality in Maryland*. Baltimore, MD: Maryland Department of the Environment. Also available at: <http://www.mde.state.md.us/programs/Water/TMDL/Integrated303dReports/Pages/2014IR.aspx>

_____. 2014b. *Biological Assessment Methodology for Non-Tidal Wadeable Streams*. Baltimore, MD: Maryland Department of the Environment. Also available at: [http://www.mde.state.md.us/programs/Water/TMDL/Integrated303dReports/Documents/Assessment_Methodologies/Biological_Listing_Methodology-non-tidalwadeablestreams_2014_Final%20\(New%20links\).pdf](http://www.mde.state.md.us/programs/Water/TMDL/Integrated303dReports/Documents/Assessment_Methodologies/Biological_Listing_Methodology-non-tidalwadeablestreams_2014_Final%20(New%20links).pdf)

MDE, MDDNR, MDA (Maryland Department of Agriculture), MDP (Maryland Department of Planning), DBM (Maryland Department of Budget and Management). 2016. *A Report to the Maryland General Assembly pursuant to the 2015 Joint Chairman's Report – page 225*. Page 10.

MES (Maryland Environmental Service). 1974. *Seminar on Water Pollution in the Baltimore Area*. Maryland Environmental Service, Annapolis, MD. 1974.

MGS (Maryland Geological Survey). 2012. *A Brief Description of the Geology of Maryland*. <http://www.mgs.md.gov/esic/brochures/mdgeology.html> (Accessed May, 2012).

Nusser, S. M., and J. J. Goebel. 1997. The National Resources Inventory: A Long-Term Multi-Resource Monitoring Program. *Environmental and Ecological Statistics* 4: 181-204.

Roth, N., M. T. Backerland, J. C. Chaillou, R. Klauda, P. F. Kazyak, S. A. Stranko, S. Weisberg, L. Hall Jr., and R. Morgan II. 1998. Maryland Biological Stream Survey: Development of a Fish Index of Biotic Integrity. *Environmental Management and Assessment* 51: 89-106.

FINAL

- Roth, N. E., M. T. Backerland, J. C. Chaillou, P. F. Kazyak, and S. A. Stranko. 2000. *Refinement and Validation of a Fish Index of Biotic Integrity for Maryland Streams*. Columbia, MD: Versar, Inc. with Maryland Department of Natural Resources, Monitoring and Non-Tidal Assessment Division.
- Roth, N. E., M. T. Backerland, J. C. Chaillou, G. M. Rogers, and J. H. Volstad. 2005. *Maryland Biological Stream Survey 2000-2004: Volume IV: Ecological Assessment of Watersheds Sampled in 2003*. Columbia, MD: Versar, Inc. with Maryland Department of Natural Resources, Monitoring and Non-Tidal Assessment Division.
- Stribling, J. B., B. K. Jessup, J. S. White, D. Boward, and M. Hurd. 1998. *Development of a Benthic Index of Biotic Integrity for Maryland Streams*. Owings Mills, MD: Tetra Tech, Inc. with Maryland Department of Natural Resources, Monitoring and Non-Tidal Assessment Program.
- US Census Bureau. 2010. *2010 Census*. Washington, DC: US Census Bureau.
- USDA (United States Department of Agriculture). 1982. *1982 Census of Agriculture*. Washington, DC: United States Department of Agriculture.
- _____. 1983. Sediment Sources, Yields, and Delivery Ratios. In *National Engineering Handbook, Section 3, Sedimentation*. Washington, DC: United States Department of Agriculture, Natural Resources Conservation Service.
- _____. 1987. *1987 Census of Agriculture*. Washington, DC: United States Department of Agriculture.
- _____. 1992. *1992 Census of Agriculture*. Washington, DC: United States Department of Agriculture.
- _____. 1997. *1997 Census of Agriculture*. Washington, DC: United States Department of Agriculture.
- _____. 2002. *2002 Census of Agriculture*. Washington, DC: United States Department of Agriculture.
- _____. 2006. *State Soil Geographic (STATSGO) Database for Maryland*. Washington, DC: United States Department of Agriculture, Natural Resources Conservation Service. Also available at <http://websoilsurvey.sc.egov.usda.gov/App/HomePage.htm>.
- USEPA (U.S. Environmental Protection Agency). 1991. *Technical Support Document (TSD) for Water Quality-based Toxics Control*. Washington, DC: U.S. Environmental Protection Agency. Also available at <http://www.epa.gov/npdes/pubs/owm0264.pdf>.

FINAL

- _____. 2002. *Establishing Total Maximum Daily Load (TMDL) Wasteload Allocations (WLAs) for Storm Water Sources and NPDES Permit Requirements Based on Those WLAs*. Washington, DC: U.S. Environmental Protection Agency.
- _____. 2003a. Developing water quality criteria for suspended and bedded sediments (SABS) – Potential Approaches – DRAFT. USEPA Science Advisory Board Consultation, EPA Office of Water, Office of Science and Technology, August 2003.
- _____. 2003b. *Stormwater Best Management Practice Categories and Pollutant Removal Efficiencies*. Annapolis, MD: U.S. Environmental Protection Agency with Chesapeake Bay Program.
- _____. 2004. *Agricultural BMP Descriptions as Defined for the Chesapeake Bay Program Watershed Model*. Annapolis, MD: U.S. Environmental Protection Agency with Chesapeake Bay Program.
- _____. 2007. *Options for the Expression of Daily Loads in TMDLs*. Washington, DC: U.S. Environmental Protection Agency, Office of Wetlands, Oceans & Watersheds. Also available at www.epa.gov/owow/tmdl/draft_daily_loads_tech.pdf.
- _____. 2010a. *Chesapeake Bay Total Maximum Daily Load for Nitrogen, Phosphorus, and Sediment*. Annapolis, MD: U.S. Environmental Protection Agency, Chesapeake Bay Program Office. Also available at <http://www.epa.gov/reg3wapd/tmdl/ChesapeakeBay/tmdlexec.html>.
- _____. 2010b. *Chesapeake Bay Phase 5.3 Community Watershed Model*. Annapolis, MD: U.S. Environmental Protection Agency, Chesapeake Bay Program Office. Also available at <http://ches.communitymodeling.org/models/CBPhase5/documentation.php#p5modeldoc>.
- _____. 2014. *Revisions to the November 22, 2002 Memorandum establishing Total Maximum Daily Load (TMDL) Wasteload Allocations (WLAs) for Storm Water Sources and NPDES Permit Requirements Based on Those LAs*. Washington, DC: U.S. Environmental Protection Agency.
- _____. 2016. *Ecoregions*. Retrieved October 12, 2016, from <https://www.epa.gov/eco-research/ecoregions>

APPENDIX A – Watershed Characterization Data

Table A-1: Reference Watersheds

MD 8-Name	MD 8-digit	Physiographic Ecoregion	Percent Stream Mile BIBI/FIBI < 3.0 (%) ^{1,2}	Forest Normalized Sediment Load ³
Big Elk Creek	02130606	Piedmont	12.5	7.8
Brighton Dam	02131108	Piedmont	10.0	3.0
Broad Creek	02120205	Piedmont	10.5	3.4
Deer Creek	02120202	Piedmont	10.2	3.6
Fifteen Mile Creek	02140511	Highland	6.7	1.7
Furnace Bay	02130609	Piedmont	10	6.6
Little Gunpowder Falls	02130804	Piedmont	13.3	3.8
Middle Patuxent River	02131106	Piedmont	18.8	2.5
Northeast River	02130608	Piedmont	15.7	9.2
Octoraro Creek	02120203	Piedmont	7.7	8.3
Savage River	02141006	Highland	4.9	2.7
Median				3.6
75th percentile				7.2

- Notes:**
- ¹ Based on the percentage of MBSS stations with BIBI and/or FIBI scores significantly lower than 3.0 within the watershed (MDE 2012a).
 - ² The percent stream miles with BIBI and/or FIBI scores significantly lower than 3.0 threshold to determine if an 8-digit watershed is impaired for impacts to biological communities is based on a comparison to reference conditions (MDE 2008).
 - ³ Forest normalized sediment loads based on Maryland watershed area only (consistent with MBSS random monitoring data).

APPENDIX B – Technical Approach Used to Generate Maximum Daily Loads

Summary

This appendix documents the technical approach used to define maximum daily loads (MDLs) of sediment consistent with the average annual TMDL in the Back River watershed, which is considered the maximum allowable load the watershed can sustain and protect aquatic life. The approach builds upon the modeling analysis that was conducted to determine the sediment loadings and can be summarized as follows.

- The approach defines MDLs for each of the source categories.
- The approach builds upon the TMDL modeling analysis that was conducted to ensure that average annual loading targets are at a level that protect aquatic life.
- The approach converts daily time-series loadings into TMDL values in a manner that is consistent with available USEPA guidance on generating daily loads for TMDLs (USEPA 2007).
- The approach considers a daily load level of a resolution based on the specific data that exists for each source category.

Introduction

This appendix documents the development and application of the approach used to define MDL values. It is divided into sections discussing:

- Basis for approach
- Options considered
- Selected approach
- Results of approach

Basis for approach

The overall approach for the development of daily loads was based upon the following factors:

- **Average Annual TMDL:** The basis of the average annual sediment TMDL is that cumulative high sediment loading rates have negative impacts on the biological community. Thus, the average annual sediment load was calculated so as to ensure the protection of aquatic life.
- **CBP P5.3.2 Watershed Model Sediment Loads:** As described in Section 2.2, the nonpoint source sediment loads from the Back River watershed are based on EOS loads from the CBP P5.3.2 watershed model. The CBP P5.3.2 model river segments were calibrated to daily monitoring information for watersheds with a flow greater than 100 cubic feet per second (cfs), or an approximate area of 100 square miles.

FINAL

- **Draft USEPA guidance document entitled “Developing Daily Loads for Load-based TMDLs”:** This guidance document provides options for defining MDLs when using TMDL approaches that generate daily output (USEPA 2007).

The rationale for developing TMDLs expressed as *daily* loads was to accept the existing average annual TMDL, but then develop a method for converting this number to a MDL in a manner consistent with USEPA guidance and available information.

Options considered

The draft USEPA guidance document for developing daily loads does not specify a single approach that must be adhered to, but rather it contains a range of acceptable options (USEPA 2007). The selection of a specific method for translating a time-series of allowable loads into the expression of a TMDL requires decisions regarding both the level of resolution (e.g., single daily load for all conditions vs. loads that vary with environmental conditions) and level of probability associated with the TMDL.

This section describes the range of options that were considered when developing methods to calculate Back River watershed MDLs.

Level of Resolution

The level of resolution pertains to the amount of detail used in specifying the MDL. The draft USEPA guidance document on daily loads provides three categories of options for level of resolution, all of which are potentially applicable for the Back River watershed:

1. **Representative daily load:** In this option, a single daily load (or multiple representative daily loads) is specified that covers all time periods and environmental conditions.
2. **Variable daily load:** This option allows the MDL to vary as a function of a particular characteristic that affects loading or waterbody response, such as flow or season.

Probability Level

All TMDLs have some probability of being exceeded, with the specific probability being either explicitly specified or implicitly assumed. This level of probability directly or indirectly reflects two separate phenomena:

1. Water quality criteria consist of components describing acceptable magnitude, duration, and frequency. The frequency component addresses how often conditions can allowably surpass the combined magnitude and duration components.
2. Pollutant loads, especially from wet weather sources, typically exhibit a large degree of variability over time. It is rarely practical to specify a “never to be exceeded value” for a daily load, as essentially any loading value has some finite probability of being exceeded.

FINAL

The draft daily load guidance document states that the probability component of the MDL should be based on a representative statistical measure that is dependent upon the specific TMDL and the best professional judgment of the developers (USEPA 2007). This statistical measure represents how often the MDL is expected/allowed to be exceeded. The primary options for selecting this level of protection would be:

1. **The maximum daily load reflects some central tendency:** In this option, the MDL is based upon the mean or median value of the range of loads expected to occur. The variability in the actual loads is not addressed.
2. **The maximum daily load is a value that will be exceeded with a pre-defined probability:** In this option, a “reasonable” upper bound percentile is selected for the MDL based upon a characterization of the variability of daily loads. For example, selection of the 95th percentile value would result in a MDL that would be exceeded 5% of the time.
3. **The maximum daily load reflects a level of protection implicitly provided by the selection of some “critical” period:** In this option, the MDL is based upon the allowable load that is predicted to occur during some critical period examined during the analysis. The developer does not explicitly specify the probability of occurrence.

Selected Approach

The approach selected for defining a Back River Watershed MDL was based upon the specific data that exists for each source category. The approach consists of unique methods for each of the following categories of sources:

- Approach for Nonpoint Sources and Stormwater Point Sources within the Back River watershed
- Approach for Wastewater Point Sources within the Back River watershed

Approach for Nonpoint Sources and Stormwater Point Sources within the Back River Watershed

The level of resolution selected for the Back River MDL was a representative daily load, expressed as a single daily load for each loading source. This approach was chosen based upon the specific data that exists for nonpoint sources and stormwater point sources within the Back River watershed. Currently, the best available data is the CBP P5.3.2 model daily time series calibrated to long-term average annual loads (per land-use). The CBP reach simulation results are calibrated to daily monitoring information for watershed segments with a flow typically greater than 100 cfs.

The probability level selected for the Back River MDL was a pre-defined exceedance probability. Based on the USEPA guidance, “in the case where a long term daily load dataset is available, in which multiple years of data and a variety of environmental conditions are represented, it is preferable to select a maximum daily load as a percentile of the load distribution. A sufficiently long-term dataset allows for minimizing error

FINAL

associated with the fact that the daily load dataset might not exactly match a normal or lognormal distribution” (USEPA 2007). The exact percentile value to be used should be determined by the TMDL developer, based on site specific characteristics.

This CBP P5.3.2 model output provides a time series of daily TSS loads from the Back River watershed, covering a 20-year period from 1985 to 2005. Because this is a long-term time series, it captures a broad range of meteorological and hydrological conditions and also minimizes the effect of potential statistical variances. As with the calculation of the TMDL value, environmentally conservative principles are also used in the MDL calculation. A 95th percentile flow was selected for the MDL, meaning that there is a 5% probability that daily loads will exceed this value. This percentile was chosen rather the 99th (which is also considered acceptable based on USEPA), in order to avoid the influence of extreme weather events and statistical outliers. Since the model daily time series represents the current (baseline) condition, the reduction percentage applied to each sector of the TMDL, was applied directly to the 95th percentile values to calculate the final MDL value.

$$MDL = 95th \text{ percentile of daily load series values} * \text{Reduction \% from TMDL} \quad (\text{Eq B-1})$$

Where:

MDL = Maximum Daily Load, ton/day

Daily load series values = CBP 5.3.2 output

TMDL = Long term average annual load, ton/yr

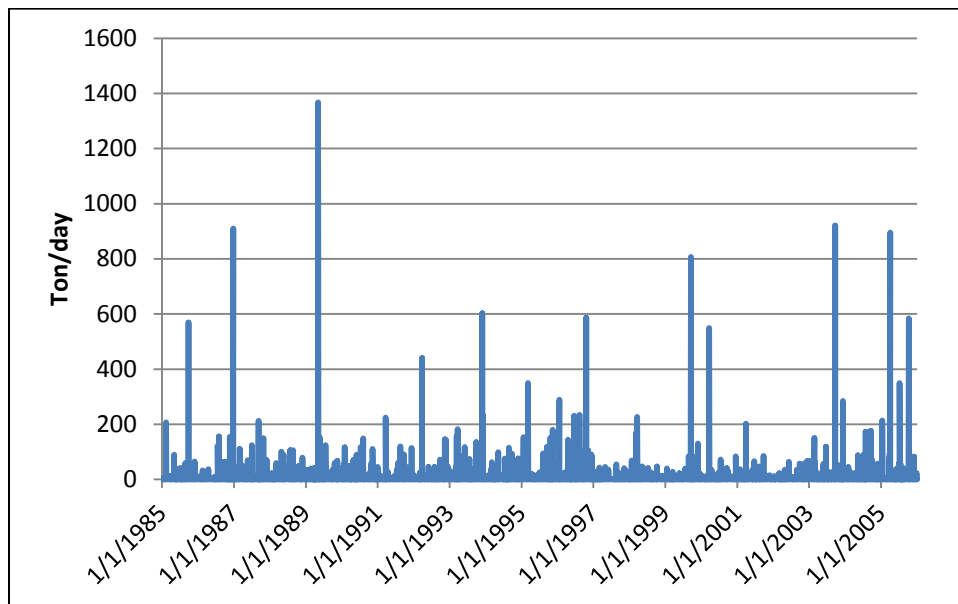


Figure B-1: Daily Time Series of CBP River Segment Daily Simulation Results for the Back River Watershed

Approach for Wastewater Point Sources within the Back River Watershed

The TMDL also considers contributions from other point sources (i.e., sources other than stormwater point sources) in the watershed that have NPDES permits with sediment limits. As these sources are generally minor contributors to the overall sediment load, the TMDL analysis that defined the average annual TMDL did not propose any reductions for these sources and held each of them constant at their existing technology-based NPDES permit monthly (or daily if monthly was not specified) limit for the entire year.

The approach used to determine MDLs for these sources was dependent upon whether a maximum daily limit was specified within the permit. If a maximum daily limit was specified, then the reported average flow was multiplied by the daily maximum limit and a conversion factor of 0.0042 to obtain an MDL in ton/day. If a maximum daily limit was not specified, the MDLs were calculated based on the guidance provided in the Technical Support Document (TSD) for Water Quality-based Toxics Control (USEPA 1991). The long-term average annual TMDL was converted to maximum daily limits using Table 5-2 of the TSD assuming a coefficient of variation of 0.6 and a 99th percentile probability. This results in a dimensionless multiplication factor of 3.11. The average annual Back River TMDL of sediment/TSS is reported in ton/yr, and the conversion from ton/yr to a MDL in ton/day is 0.0085 (e.g. 3.11/365).

Results of approach

This section lists the results of the selected approach to define the Back River MDLs. The final results are presented in Table B-1.

- Calculation Approach for Nonpoint Sources and Stormwater Point Sources within the Back River Watershed

The MDL for Nonpoint Sources and Stormwater Point Sources within the Back River Watershed is based upon the 95th percentile value of the CBP P5.3.2 model daily load time series, reduced by the same percentage as the corresponding TMDL value. The 95th percentile load of the daily times series is 20 tons/day and with a TMDL reduction of 66%, it results in a total watershed MDL of 7 tons/day. The total MDL is subdivided in accordance with the same ratios present in the TMDL.

- Calculation Approach for Wastewater Point Sources within the Back River Watershed

- For permits with a daily maximum limit:

Wastewater WLA_{BR} (ton/day) = Permit flow (millions of gallons per day (MGD)) * Daily maximum permit limit (milligrams per liter (mg/l)) * 0.0042, where 0.0042 is a combined factor required to convert units to ton/day

- For permits without a daily maximum limit:

Wastewater WLA_{BR} (ton/day) = Average Annual TMDL Wastewater WLA_{BR} Other (ton/yr)* 0.0085, where 0.0085 is the factor required to convert units to ton/day

The aggregate MDL for the point sources in the watershed is negligible.

Table B-1: Back River Watershed Maximum Daily Loads of Sediment/TSS (ton/day)

MDL (ton/day)	=	L_{BR}	+	NPDES Stormwater WLA_{BR}	+	Wastewater WLA_{BR}	+	MOS
6.8	=	0.3	+	5.5	+	1	+	Implicit