

**Total Maximum Daily Load of Sediment  
in the Patuxent River Upper Watershed,  
Anne Arundel, Howard and Prince George's Counties,  
Maryland**

**FINAL**



DEPARTMENT OF THE ENVIRONMENT  
1800 Washington Boulevard, Suite 540  
Baltimore, Maryland 21230-1718

Submitted to:

Watershed Protection Division  
U.S. Environmental Protection Agency, Region III  
1650 Arch Street  
Philadelphia, PA 19103-2029

September 2011

EPA Submittal Date: September 30, 2010  
EPA Approval Date: September 30, 2011

**Table of Contents**

List of Figures ..... i  
List of Tables ..... i  
List of Abbreviations ..... ii  
EXECUTIVE SUMMARY ..... iv  
1.0 INTRODUCTION ..... 1  
2.0 SETTING AND WATER QUALITY DESCRIPTION ..... 3  
    2.1 General Setting ..... 3  
        2.1.1. Land Use ..... 6  
    2.2 Source Assessment ..... 9  
        2.2.1 Nonpoint Source Assessment ..... 9  
        2.2.2 Point Source Assessment ..... 13  
        2.2.3 Upstream Loads Assessment ..... 14  
        2.2.4 Summary of Baseline Loads ..... 14  
    2.3 Water Quality Characterization ..... 17  
    2.4 Water Quality Impairment ..... 21  
3.0 TARGETED WATER QUALITY GOAL ..... 22  
4.0 TOTAL MAXIMUM DAILY LOADS AND SOURCE ALLOCATION ..... 23  
    4.1 Overview ..... 23  
    4.2 Analysis Framework ..... 23  
    4.3 Scenario Descriptions and Results ..... 26  
    4.4 Critical Condition and Seasonality ..... 27  
    4.5 TMDL Loading Caps ..... 28  
    4.6 Load Allocations Between Point and Nonpoint Sources ..... 29  
    4.7 Margin of Safety ..... 32  
    4.8 Summary of Total Maximum Daily Loads ..... 32  
5.0 ASSURANCE OF IMPLEMENTATION ..... 34  
REFERENCES ..... 36  
APPENDIX A – Watershed Characterization Data ..... A1  
APPENDIX B – MDE Permit Information ..... B1  
APPENDIX C – Technical Approach Used to Generate Maximum Daily Loads ..... C1  
    APPENDIX D – Sediment TMDLs for the MD 8-Digit Middle Patuxent River, Little  
    Patuxent River, and Upper Patuxent River Watersheds ..... D1

**List of Figures**

Figure 1: Location Map of the Patuxent River Upper Watershed in Anne Arundel, Prince George’s, and Howard Counties, Maryland ..... 5

Figure 2: Land Use of the Patuxent River Upper Watershed ..... 8

Figure 3: Percent Impervious of Urban Land Use vs. Percent of Urban Sediment Load Resultant from Streambank Erosion (Based on Equation 2.2) ..... 13

Figure 4: Monitoring Stations in the Patuxent River Upper Watershed..... 19

Figure 5: Patuxent River Upper Watershed TMDL Segmentation..... 24

Figure C-1: Histogram of CBP River Segment Daily Simulation Results for the Patuxent River Upper Watershed..... C5

Figure D-1: Location of the Middle Patuxent River, Little Patuxent River, Triadelphia Reservoir, Rocky Gorge Reservoir, and Patuxent River Upper Watersheds..... D2

Figure D-2: Flow Schematic of the Middle Patuxent River, Little Patuxent River, Triadelphia Reservoir, Rocky Gorge Reservoir, and Patuxent River Upper Watersheds ..... D3

**List of Tables**

Table ES-1: Patuxent River Upper Baseline Sediment Loads (ton/yr)..... vi

Table ES-2: Average Annual Patuxent River Upper TMDL of Sediment/ TSS (ton/yr). vii

Table ES-3: Patuxent River Upper Baseline Load, TMDL, and Total Reduction Percentage ..... vii

Table 1: Land Use Percentage Distribution for the Patuxent River Upper Watershed ..... 7

Table 2: Summary of EOF Erosion Rate Calculations ..... 10

Table 3: Patuxent River Upper Baseline Sediment Loads (ton/yr)..... 15

Table 4: Detailed Baseline Sediment Budget Loads Generated Within the Patuxent River Upper Watershed ..... 16

Table 5: Monitoring Stations in the Patuxent River Upper Watershed ..... 20

Table 6: Patuxent River Upper Baseline Load and TMDL ..... 29

Table 7: Patuxent River Upper TMDL Reductions by Source Category ..... 30

Table 8: Patuxent River Upper Watershed Average Annual TMDL of Sediment/TSS (ton/yr) ..... 33

Table 9: Patuxent River Upper Maximum Daily Loads of Sediment/TSS (ton/day) ..... 33

Table A-1: Coastal Plain Reference Watersheds ..... A1

Table B-1: Permit Summary ..... B1

Table B-2: Individual Municipal Permit Data ..... B3

Table B-3: General Mine Permit Data ..... B3

Table B-5: Stormwater Permits<sup>1</sup> ..... B4

Table D-1: Middle Patuxent Baseline Sediment Loads (ton/yr)..... D4

Table D-2: Little Patuxent River Baseline Sediment Loads (ton/yr)..... D4

Table D-3: Patuxent River Upper Baseline Sediment Loads (ton/yr) ..... D4

Table D-4: Little Patuxent River Average Annual TMDL (ton/yr)..... D5

Table D-5: Patuxent River Upper Average Annual TMDL (ton/yr) ..... D5

Table D-6: Rocky Gorge Reservoir Baseline Annual Sediment Loads (ton/yr), Rocky Gorge Reservoir, 1998-2003..... D7

Table D-7: Average Annual Sediment Loads (ton/yr), Rocky Gorge Reservoir, 1998-2003, Phosphorus TMDL Scenario..... D7

**List of Abbreviations**

BIBI	Benthic Index of Biotic Integrity
BIP	Buffer Incentive Program
BMP	Best Management Practices
BSID	Biological Stressor Identification
CBP P4.3	Chesapeake Bay Program Phase 4.3
CBP P5.2	Chesapeake Bay Program Phase 5.2
cfs	Cubic feet per second
CV	Coefficient of Variation
CWA	Clean Water Act
DNR	Maryland Department of Natural Resources
EOF	Edge-of-Field
EOS	Edge-of-Stream
EPA	Environmental Protection Agency
EPSC	Environmental Permit Service Center
ESD	Environmental Site Design
ETM	Enhanced Thematic Mapper
FDC	Flow Duration Curve
FIBI	Fish Index of Biologic Integrity
GIS	Geographic Information System
HSPF	Hydrological Simulation Program – FORTRAN
IBI	Index of Biotic Integrity
LA	Load Allocation
m	Meter
MAL	Minimum Allowable IBI Limit
MBSS	Maryland Biological Stream Survey
MD 8-Digit	Maryland 8-digit Watershed
MDE	Maryland Department of the Environment
MDL	Maximum Daily Load
MGD	Millions of Gallons per Day
mg/l	Milligrams per liter

## FINAL

MOS	Margin of Safety
MS4	Municipal Separate Storm Sewer System
NPDES	National Pollutant Discharge Elimination System
NRCS	Natural Resource Conservation Service
NRI	Natural Resources Inventory
PSU	Primary Sampling Unit
RESAC	Regional Earth Science Applications Center
SCS	Soil Conservation Service
TMDL	Total Maximum Daily Load
Ton/yr	Tons per Year
TSD	Technical Support Document
TSS	Total Suspended Solids
TM	Thematic Mapper
USDA	United States Department of Agriculture
USGS	United States Geological Survey
WLA	Waste Load Allocation
WQA	Water Quality Analysis
WQIA	Water Quality Improvement Act
WQLS	Water Quality Limited Segment
WWTP	Wastewater Treatment Plant

## FINAL

### EXECUTIVE SUMMARY

This document, upon approval by the U.S. Environmental Protection Agency (EPA), establishes a Total Maximum Daily Load (TMDL) for sediment in the Patuxent River Upper watershed (basin number 02131104) (2008 *Integrated Report of Surface Water Quality in Maryland Assessment Unit ID: MD-02131104*). Section 303(d) of the federal Clean Water Act (CWA) and the EPA's implementing regulations direct each state to identify and list waters, known as water quality limited segments (WQLSs), in which current required controls of a specified substance are inadequate to achieve water quality standards. For each WQLS, the State is required to either establish a TMDL of the specified substance that the waterbody can receive without violating water quality standards, or demonstrate that water quality standards are being met (CFR 2009b).

The Maryland Department of the Environment (MDE) has identified the waters of the Patuxent River Upper watershed on the State's 2008 Integrated Report as impaired by nutrients – nitrogen and phosphorus (1996), sediment (1996), bacteria (2002 and 2008), methylmercury - Cash Lake (2004), and impacts to biological communities (2006) (MDE 2008a). The designated use of the Patuxent River Upper mainstem and its tributaries is Use I (Water Contact Recreation and Protection of Aquatic Life) (COMAR 2009 a,b).

The TMDL established herein by MDE will address the 1996 sediments listing, for which a data solicitation was conducted, and all readily available data from the past five years have been considered. A Water Quality Analysis (WQA) for eutrophication to address the nutrients (nitrogen and phosphorus) listing was approved by EPA in 2007, and the watershed was delisted for bacteria in 2002 (relisted in 2008 – mainstem only from Old Queen Anne's Bridge Road to the river's confluence with the Little Patuxent River). A methylmercury TMDL for Cash Lake is scheduled to be submitted to the EPA in 2010. In the 2012 Integrated Report, the listing for impacts to biological communities will include the results of a stressor identification analysis.

The Patuxent River Upper watershed aquatic life assessment scores, consisting of the Benthic Index of Biotic Integrity (BIBI) and Fish Index of Biotic Integrity (FIBI), indicate that the biological metrics for the watershed exhibit a significant negative deviation from reference conditions based on Maryland's biocriteria listing methodology. The biocriteria listing methodology assesses the condition of Maryland's 8-digit (MD 8-digit) watersheds by measuring the percentage of sites, translated into watershed stream miles, that are assessed as having BIBI and/or FIBI scores significantly lower than 3.0 (on a scale of 1 to 5), and then calculating whether this percentage differs significantly from reference conditions (i.e., unimpaired watershed: <10% of stream miles differ from reference conditions) (Roth et al. 2005; MDE 2008a). The objective of the TMDL established herein is to ensure that watershed sediment loads are at a level to support the Use I designation for the Patuxent River Upper watershed, and more specifically, at a level to support aquatic life.

Currently in Maryland, there are no specific numeric criteria that quantify the impact of sediment on the aquatic life of nontidal stream systems. Therefore, to determine whether aquatic life is impacted by elevated sediment loads, MDE's *Biological Stressor*

## FINAL

*Identification* (BSID) methodology was applied. The BSID identifies the most probable cause(s) for observed biological impairments throughout MD's 8-digit watersheds by ranking the likely stressors affecting a watershed using a suite of physical, chemical, and land use data. The ranking of stressors was conducted via a risk-based, systematic, weight-of-evidence approach. The risk-based approach estimates the strength of association between various stressors and an impaired biological community. The BSID analysis then identifies individual stressors (pollutants) as probable or unlikely causes of the poor biological conditions within a given MD 8-digit watershed and subsequently concludes whether or not these individual stressors or groups of stressors are contributing to the impairment (MDE 2009a).

The BSID analysis for the Patuxent River Upper watershed concludes that biological communities are likely impaired due to flow/sediment related stressors. Individual stressors within the sediment and habitat parameter groupings that are associated with sediment related impacts and an altered hydrologic regime were identified as being probable causes of the biological impairment. Furthermore, the degradation of biological communities in the watershed is strongly associated with urban land use and its concomitant effects: (MDE 2010a).

In order to quantify the impact of sediment on the aquatic life of non-tidal stream systems, a reference watershed TMDL approach was used and resulted in the establishment of a *sediment loading threshold* (Currey et al. 2006). This threshold is based on a detailed analysis of sediment loads from watersheds that are identified as supporting aquatic life (i.e., reference watersheds) based on Maryland's biocriteria (Roth et al. 1998, 2000; Stribling et al. 1998; MDE 2008a). This threshold is then used to determine a watershed specific sediment TMDL.

The computational framework chosen for the Patuxent River Upper watershed TMDL was the Chesapeake Bay Program Phase 5.2 (CBP P5.2) watershed model *edge-of-field* (EOF) land use sediment loading rate calculations combined with a *sediment delivery ratio*. The *edge-of-stream* (EOS) sediment load is calculated per land use as a product of the land use area, land use target loading rate, and loss from the EOF to the main channel. The spatial domain of the CBP P5.2 watershed model segmentation aggregates to the MD 8-digit watersheds, which is consistent with the impairment listing.

EPA's regulations require TMDLs to take into account seasonality and critical conditions for stream flow, loading, and water quality parameters (CFR 2009b). The intent of this requirement is to ensure that the water quality of the waterbody is protected during times when it is most vulnerable. The biological monitoring data used to determine the reference watersheds reflect the impacts of stressors (i.e., sediment impacts to stream biota) over the course of time (i.e., captures the impacts of all high and low flow events). Thus, critical conditions are inherently addressed. Seasonality is captured in two components. First, it is implicitly included in biological sampling as biological communities reflect the impacts of stressors over time, as described above. Second, the Maryland Biological Stream Survey (MBSS) dataset included benthic sampling in the spring and fish sampling in the summer.

**FINAL**

All TMDLs need to be presented as a sum of waste load allocations (WLAs) for point sources and load allocations (LAs) for nonpoint sources generated within the assessment unit, accounting for natural background, tributary, and adjacent segment loads. Furthermore, all TMDLs must include a margin of safety (MOS) to account for any lack of knowledge and uncertainty concerning the relationship between loads and water quality (CFR 2009a,b). It is proposed that the estimated variability around the reference watershed group used in this analysis already accounts for such uncertainty, and therefore the MOS is implicitly included.

The Patuxent River Upper Total Baseline Sediment Load is 66,421.15 tons per year (ton/yr). This baseline load consists of upstream loads generated outside the assessment unit: a Little Patuxent River Upstream Baseline Load (BL<sub>LP</sub>) of 37,066.5 ton/yr and a Rocky Gorge Reservoir Upstream Baseline Load (BL<sub>RG</sub>) of 7,689.0, and loads generated within the assessment unit: a Patuxent River Upper Watershed Baseline Load Contribution of 21,665.6 ton/yr. The Patuxent River Upper Watershed Baseline Load Contribution is further subdivided into nonpoint source baseline loads (Nonpoint Source BL<sub>UP</sub>) and two types of point source baseline loads: National Pollutant Discharge Elimination System (NPDES) regulated stormwater (NPDES Stormwater BL<sub>UP</sub>) and regulated process water (Process Water BL<sub>UP</sub>) (see Table ES-1). Appendix D provides a detailed explanation of the upstream loads.

**Table ES-1: Patuxent River Upper Baseline Sediment Loads (ton/yr)**

Total Baseline Load (ton/yr)	Upstream Baseline Load <sup>1</sup>		Patuxent River Upper Watershed Baseline Load Contribution			
	BL <sub>LP</sub> <sup>2</sup>	BL <sub>RG</sub> <sup>3</sup>	Nonpoint Source BL <sub>UP</sub>	NPDES Stormwater BL <sub>UP</sub>	Process Water BL <sub>UP</sub>	
66,421.1	37,066.5	7,689.0	11,956.1	9,102.0	607.5	

- Notes:**
- <sup>1</sup> Although the Upstream Baseline Loads are reported here as single values, they could include point and nonpoint sources.
  - <sup>2</sup> For the Little Patuxent River watershed point and nonpoint source characterization, please refer to the “Total Maximum Daily Load of Sediment in the Little Patuxent River Watershed, Howard and Anne Arundel Counties, Maryland” (MDE 2010c).
  - <sup>3</sup> For the Rocky Gorge Reservoir point and nonpoint source characterization, please refer to Appendix D, and for additional information regarding other sources of sediment to the reservoir (i.e., upstream sources) see the “Total Maximum Daily Loads of Phosphorus and Sediments for Triadelphia Reservoir (Brighton Dam) and Total Maximum Daily Loads of Phosphorus for Rocky Gorge Reservoir, Howard, Montgomery, and Prince George’s Counties, Maryland” (MDE 2008b).

The Patuxent River Upper Average Annual TMDL of Sediment/Total Suspended Solids (TSS) is 56,607.1 ton/yr. The TMDL consists of allocations attributed to loads generated outside the assessment unit referred to as Upstream Load Allocations: a Little Patuxent River Upstream Load Allocation of 31,199.8 ton/yr (LA<sub>LP</sub>) and a Rocky Gorge Reservoir Upstream Load Allocation (LA<sub>RG</sub>) of 5,769.0, and loads generated within the assessment unit: a Patuxent River Upper Watershed TMDL Contribution of 19,638.3 ton/yr. The Patuxent River Upper Watershed TMDL Contribution is further subdivided into point



**FINAL**

and nonpoint source allocations and is comprised of a Load Allocation (LA<sub>UP</sub>) of 10,966.2 ton/yr, an NPDES Stormwater Waste Load Allocation (NPDES Stormwater WLA<sub>UP</sub>) of 8,064.6 tons/yr, and a Process Water Waste Load Allocation (Process Water WLA<sub>UP</sub>) of 607.5 ton/yr (see Table ES-2).

This TMDL will ensure that the sediment loads and resulting effects are at a level to support the Use I designation for the Patuxent River Upper watershed, and more specifically, at a level to support aquatic life. The TMDL, however, will not completely resolve the impairment to biological communities within the watershed. Since the BSID watershed analysis identifies other possible stressors (i.e., acute ammonia toxicity, chlorides, and sulfates) as impacting the biological conditions, this impairment remains to be fully addressed through the Integrated Report listing process and the TMDL development process, such that all impairing substances identified as impacting biological communities in the watershed are reduced to levels that will meet water quality standards, as established in future TMDLs for those substances (MDE 2009a, 2010a).

**Table ES-2: Average Annual Patuxent River Upper TMDL of Sediment/ TSS (ton/yr)**

TMDL (ton/yr)	LA			WLA		MOS
	LA <sub>LP</sub> <sup>1</sup>	LA <sub>RG</sub> <sup>2</sup>	LA <sub>UP</sub>	NPDES Stormwater WLA <sub>UP</sub>	Process Water WLA <sub>UP</sub>	
56,607.1	31,199.8	5,769.0	10,966.2	8,064.6	607.5	Implicit
	Upstream Load Allocations <sup>3,4</sup>		Patuxent River Upper Watershed TMDL Contribution			

- Notes:**
- <sup>1</sup> For Little Patuxent River watershed WLA and LA characterization, please refer to the “Total Maximum Daily Load of Sediment in the Little Patuxent River Watershed, Howard and Anne Arundel Counties, Maryland” (MDE 2010c).
  - <sup>2</sup> For Rocky Gorge Reservoir WLA and LA characterization, please refer to Appendix D, and for additional information regarding other sources of sediment to the reservoir (i.e., upstream sources) see the “Total Maximum Daily Loads of Phosphorus and Sediments for Triadelphia Reservoir (Brighton Dam) and Total Maximum Daily Loads of Phosphorus for Rocky Gorge Reservoir, Howard, Montgomery, and Prince George’s Counties, Maryland” (MDE 2008b).
  - <sup>3</sup> Although for the purposes of this analysis the upstream loads are referred to as LAs, they could include loads from point and nonpoint sources.
  - <sup>4</sup> A delivery factor of 1 was used for the Upstream LAs.

**Table ES-3: Patuxent River Upper Baseline Load, TMDL, and Total Reduction Percentage**

Baseline Load (ton/yr)	TMDL (ton/yr)	Total Reduction (%)
66,421.1	56,607.1	14.8

In addition to the TMDL value, a Maximum Daily Load (MDL) is also presented in this document. The calculation of the MDL, which is derived from the TMDL average annual loads, is explained in Appendix C and presented in Table C-1.

## **FINAL**

Once the EPA has approved this TMDL, and it is known what measures must be taken to reduce pollution levels, implementation of best management practices (BMPs) is expected to take place. Relative to the required reduction in sediment loads from the regulated sector of the TMDL, specifically the NPDES Stormwater WLA as no reductions are required from the Process Water WLA, BMP implementation will primarily occur via the municipal separate storm sewer system (MS4) permitting process for medium and large municipalities. MDE intends for the required reduction to be implemented in an iterative process that first addresses those sources with the largest impact to water quality, with consideration given to cost of implementation.

Maryland has several well-established programs to draw upon, including the Water Quality Improvement Act of 1998 (WQIA) and the Federal Nonpoint Source Management Program (§ 319 of the Clean Water Act). Several potential funding sources available for local governments for implementation are available, such as the Buffer Incentive Program (BIP), the State Water Quality Revolving Loan Fund, and the Stormwater Pollution Cost Share Program. Details of these programs and additional funding sources can be found at <http://www.dnr.state.md.us/bay/services/summaries.html>.

# FINAL

## 1.0 INTRODUCTION

This document, upon approval by the U.S. Environmental Protection Agency (EPA), establishes a Total Maximum Daily Load (TMDL) for sediment in the Patuxent River Upper watershed (basin number 02131104) (2008 *Integrated Report of Surface Water Quality in Maryland Assessment Unit ID: MD-02131104*). Section 303(d) of the federal Clean Water Act (CWA) and the EPA's implementing regulations direct each state to develop a TMDL for each impaired water quality limited segment (WQLS) on the State's Integrated Report, taking into account seasonal variations, critical conditions, and a protective margin of safety (MOS) to account for uncertainty (CFR 2009b). A TMDL reflects the total pollutant loading of the impairing substance a waterbody can receive and still meet water quality standards.

TMDLs are established to determine the pollutant load reductions needed to achieve and maintain water quality standards. A water quality standard is the combination of a designated use for a particular body of water and the water quality criteria designed to protect that use. Designated uses include activities such as swimming, drinking water supply, protection of aquatic life, and shellfish propagation and harvest. Water quality criteria consist of narrative statements and numeric values designed to protect the designated uses. Criteria may differ among waters with different designated uses.

The Maryland Department of the Environment (MDE) has identified the waters of the Patuxent River Upper watershed on the State's 2008 Integrated Report as impaired by nutrients – nitrogen and phosphorus (1996), sediment (1996), bacteria (2002 and 2008), methylmercury - Cash Lake (2004), and impacts to biological communities (2006) (MDE 2008a). The designated use of the Patuxent River Upper mainstem and its tributaries is Use I (Water Contact Recreation and Protection of Aquatic Life) (COMAR 2009 a,b).

The TMDL established herein by MDE will address the 1996 sediments listing, for which a data solicitation was conducted, and all readily available data from the past five years have been considered. A Water Quality Analysis (WQA) for eutrophication to address the nutrients (nitrogen and phosphorus) listing was approved by EPA in 2007, and the watershed was delisted for bacteria in 2002 (relisted in 2008 – mainstem only from Old Queen Anne's Bridge Road to the river's confluence with the Little Patuxent River). A methylmercury TMDL for Cash Lake is scheduled to be submitted to the EPA in 2010. In the 2012 Integrated Report, the listing for impacts to biological communities will include the results of a stressor identification analysis.

The objective of the TMDL established herein is to ensure that watershed sediment loads are at a level to support the Use I designation for the Patuxent River Upper watershed, and more specifically, at a level to support aquatic life. Currently in Maryland, there are no specific numeric criteria that quantify the impact of sediment on the aquatic life of nontidal stream systems. Therefore, to determine whether aquatic life is impacted by elevated sediment loads, MDE's *Biological Stressor Identification* (BSID) methodology was applied.

## FINAL

The BSID identifies the most probable cause(s) for observed biological impairments throughout Maryland's 8-digit (MD 8-digit) watersheds by ranking the likely stressors affecting a watershed using a suite of physical, chemical, and land use data. The ranking of stressors was conducted via a risk-based, systematic, weight-of-evidence approach. The risk-based approach estimates the strength of association between various stressors and an impaired biological community. The BSID analysis then identifies individual stressors (pollutants) as probable or unlikely causes of the poor biological conditions within a given MD 8-digit watershed and subsequently concludes whether or not these individual stressors or groups of stressors are contributing to the impairment (MDE 2009a).

In order to quantify the impact of sediment on the aquatic life of non-tidal stream systems, a reference watershed TMDL approach was used and resulted in the establishment of a *sediment loading threshold* (Currey et al. 2006). This threshold is based on a detailed analysis of sediment loads from watersheds that are identified as supporting aquatic life (i.e., reference watersheds) based on Maryland's biocriteria (Roth et al. 1998, 2000; Stribling et al. 1998; MDE 2008a). This threshold is then used to determine a watershed specific sediment TMDL.

## FINAL

## 2.0 SETTING AND WATER QUALITY DESCRIPTION

### 2.1 General Setting

#### Location

The Patuxent River Upper is a free flowing stream that originates at the discharge of the Rocky Gorge Reservoir near Interstate 95 and flows 28 miles in a southeasterly direction until it joins the Patuxent River, only a few miles upstream of the river's tidal boundary. The watershed is located in the Patuxent River sub-basin of the Chesapeake Bay watershed within Howard, Anne Arundel, and Prince George's Counties, Maryland and covers approximately 56,446 acres (see Figure 1). Both the Little Patuxent River and the Rocky Gorge Reservoir empty into the Patuxent River Upper. There is one "high quality", or Tier II, stream segment (Benthic Index of Biotic Integrity (BIBI) and Fish Index of Biotic Integrity (FIBI) aquatic life assessment scores > 4 (scale 1 – 5)), which is the mainstem of the Patuxent River Upper between the river's confluence with Horsepen Branch to the immediate downstream confluence with the an unnamed tributary, located within the watershed requiring the implementation of Maryland's antidegradation policy (COMAR 2009c; MDE 2010b). Also, approximately 0.3% of the watershed area is covered by water (i.e., streams ponds, etc.). The total population in the watershed is nearly 165,898 (US Census Bureau 2000).

#### Geology/Soils

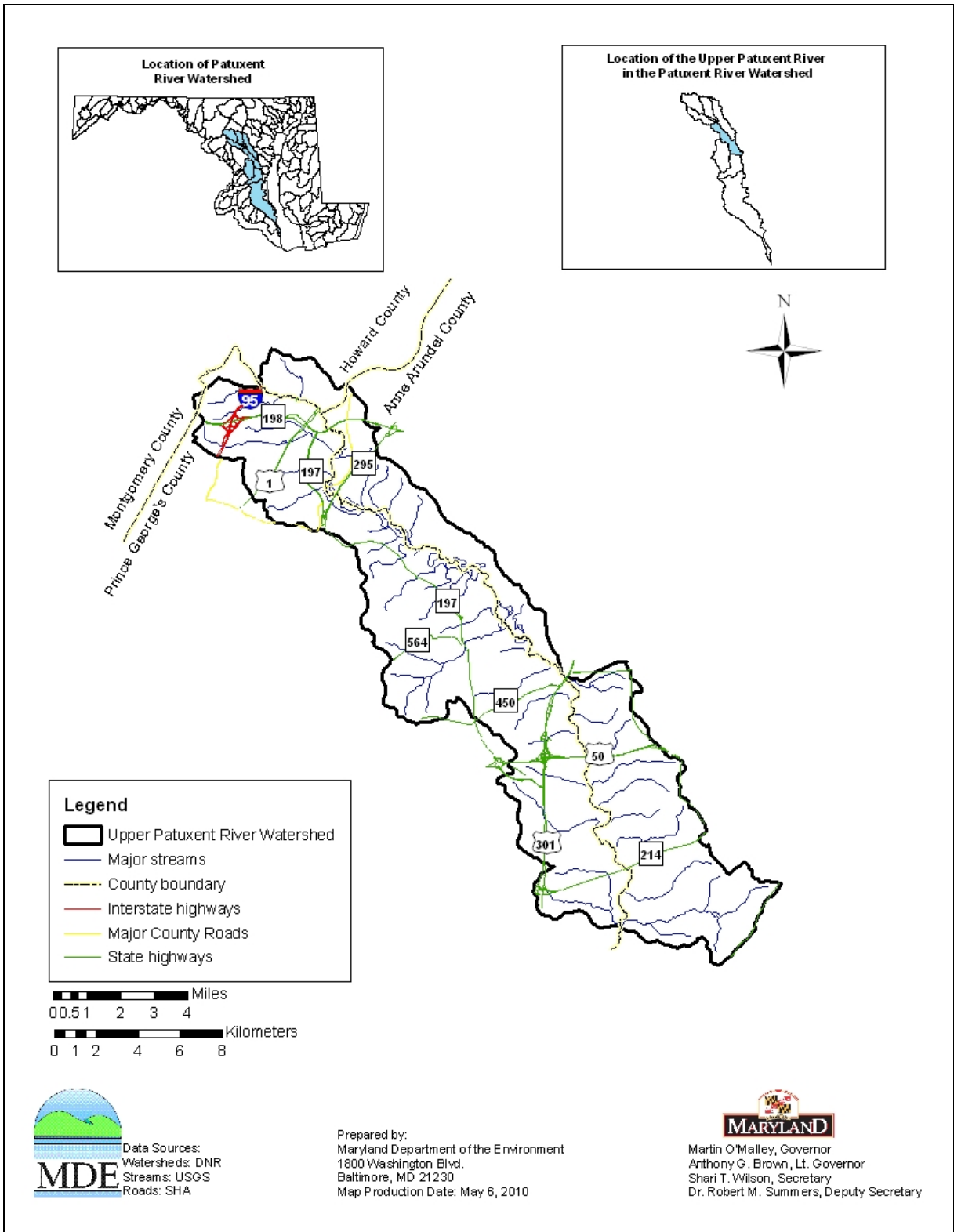
The Patuxent River Upper watershed lies almost entirely within the Coastal Plain geologic province of Maryland with the northern tip extending slightly into the Piedmont geologic province. Broad upland areas with low slopes, gentle drainage, and deep sedimentary soil complexes that support broad meandering streams characterize the Coastal Plain geologic province. The Piedmont geologic province is characterized by gentle to steep rolling topography, low hills, and ridges. The surficial geology is characterized by crystalline igneous and metamorphic rocks of volcanic origin consisting primarily of schist and gneiss (DNR 2009; MGS 2009; MDE 2000).

The Patuxent River Upper drains from northwest to southeast, where it traverses from its headwaters in the eastern Piedmont geologic province to the Coastal Plain geologic province. The sediments of the Coastal Plain dip eastward at a low angle, generally less than one degree, and range in age from Triassic to Quaternary. The mineral resources of the Coastal Plain are primarily sand and gravel, which are used as aggregate materials by the construction industry. The Piedmont geologic province is composed of hard, crystalline igneous and metamorphic rocks, which extend from the inner edge of the Coastal Plain westward to Catocin Mountain, the boundary between the Blue Ridge geologic province and the Piedmont geologic province. Bedrock in the eastern part of the Piedmont consists of schist, gneiss, gabbro, and other highly metamorphosed sedimentary and igneous rocks of probable volcanic origin. Formerly, building stone, slate, and small deposits of nonmetallic minerals, base-metal sulfides, gold, chromite, and iron ore were mined in the Piedmont geologic province. Currently, crushed stone is an important for aggregate materials, such as cement and lime (MGS 2009).

## **FINAL**

The Patuxent River Upper watershed is comprised of several different soil series including the Baile, Chester, and Beltsville series. The Baile series consists of very deep, poorly drained soils that are primarily located on upland depressions and footslopes. Saturated Hydraulic conductivity in this soil series is moderately low to moderately high. The Chester series consists of very deep, well drained soils formed in materials weathered from micaceous schist that are primarily located on uplands. Saturated hydraulic conductivity in this soil series is moderately high to high. The Beltsville series consists of very deep, moderately well drained soils that are also primarily located on uplands. Saturated hydraulic conductivity in this soil series is low to moderately low in the fragipan (MDE 2010a).

Soil type for the Patuxent River Upper watershed is also categorized by the United States Department of Agriculture (USDA) Soil Conservation Service (SCS) into four hydrologic soil groups: Group A soils have high infiltration rates and are typically deep well-drained to excessively drained sands or gravels; Group B soils have moderate infiltration rates and consist of moderately deep to deep and moderately well to well drained soils, with moderately fine to moderately coarse textures; Group C soils have slow infiltration rates and a layer that impedes downward water movement and consist of moderately fine to fine textured soils; Group D soils have very slow infiltration rates and consist of clay soils with a permanently high water table that are shallow and often over nearly impervious material. The Patuxent River Upper watershed is comprised of primarily Group B type soils (47%) with smaller amounts of Group C (27%), Group D (18%), and Group A soils (8%) (USDA 2006).



**Figure 1: Location Map of the Patuxent River Upper Watershed in Anne Arundel, Prince George's, and Howard Counties, Maryland**

## FINAL

### 2.1.1. Land Use

#### Land Use Methodology

The land use framework used to develop this TMDL was originally developed for the Chesapeake Bay Program Phase 5.2 (CBP P5.2) watershed model.<sup>1</sup> The CBP P5.2 land use Geographic Information System (GIS) framework was based on two distinct layers of development. The first GIS layer was developed by the Regional Earth Science Applications Center (RESAC) at the University of Maryland and was based on 2001 satellite imagery (Landsat 7-Enhanced Thematic Mapper (ETM) and 5-Thematic Mapper (TM)) (Goetz et al. 2004). This layer did not provide the required level of accuracy that is especially important when developing agricultural land uses. In order to develop accurate agricultural land use calculations, the CBP P5.2 used county level U.S. Agricultural Census data as a second layer (USDA 1982, 1987, 1992, 1997, 2002).

Given that land cover classifications based on satellite imagery are likely to be least accurate at edges (i.e., boundaries between covers), the RESAC land uses bordering agricultural areas were analyzed separately. If the agricultural census data accounted for more agricultural use than the RESAC's data, appropriate acres were added to agricultural land uses from non-agricultural land uses. Similarly, if census agricultural land estimates were smaller than RESAC's, appropriate acres were added to non-agricultural land uses.

Adjustments were also made to the RESAC land cover to determine developed land uses. RESAC land cover was originally based on the United States Geological Survey (USGS) protocols used to develop the 2000 National Land Cover Database. The only difference between the RESAC and USGS approaches was RESAC's use of town boundaries and road densities to determine urban land covered by trees or grasses. This approach greatly improved the accuracy of the identified urban land uses, but led to the misclassification of some land adjacent to roads and highways as developed land. This was corrected by subsequent analysis. To ensure that the model accurately represented development over the simulation period, post-processing techniques that reflected changes in urban land use have been applied.

The result of this approach is that CBP P5.2 land use does not exist in a single GIS coverage; instead it is only available in a tabular format. The CBP P5.2 watershed model is comprised of 25 land uses. Most of these land uses are differentiated only by their nitrogen and phosphorus loading rates. The land uses are divided into 13 classes with distinct sediment erosion rates. Table 1 lists the CBP P5.2 generalized land uses, detailed land uses, which are classified by their erosion rates, and the acres of each land use in the Patuxent River Upper watershed. Details of the land use development methodology have been summarized in the report entitled *Chesapeake Bay Phase 5 Community Watershed Model* (US EPA 2009).

---

<sup>1</sup> The EPA Chesapeake Bay Program developed the first watershed model in 1982. There have been many upgrades since the first phase of this model. The CBP P5 was developed to estimate flow, nutrient, and sediment loads to the Bay.



**Patuxent River Upper Watershed Land Use Distribution**

The Patuxent River Upper watershed consists primarily of urban land use (40.5%) and forest land use (48.3%). There are also small amounts of crop (8.7%) and pasture (2.3%). A detailed summary of the watershed land use areas is presented in Table 1, and a land use map is provided in Figure 2.

**Table 1: Land Use Percentage Distribution for the Patuxent River Upper Watershed**

<b>General Land Use</b>	<b>Detailed Land Use</b>	<b>Area (Acres)</b>	<b>Percent</b>	<b>Grouped Percent of Total</b>
Crop	Animal Feeding Operations	10.3	0.0	8.7
	Hay	1,283.2	2.3	
	High Till	1,863.6	3.3	
	Low Till	1,726.0	3.1	
	Nursery	4.1	0.0	
Extractive	Extractive	156.7	0.3	0.3
Forest	Forest	26,912.5	47.8	48.3
	Harvested Forest	271.8	0.5	
Pasture	Pasture	1,288.0	2.3	2.3
	Trampled Pasture	0.0	0.0	
Urban	Urban: Barren	252.7	0.4	40.5
	Urban: Impervious	5,457.1	9.7	
	Urban: Pervious	17,063.6	30.3	
Total		56,289.9	100.0	100.0

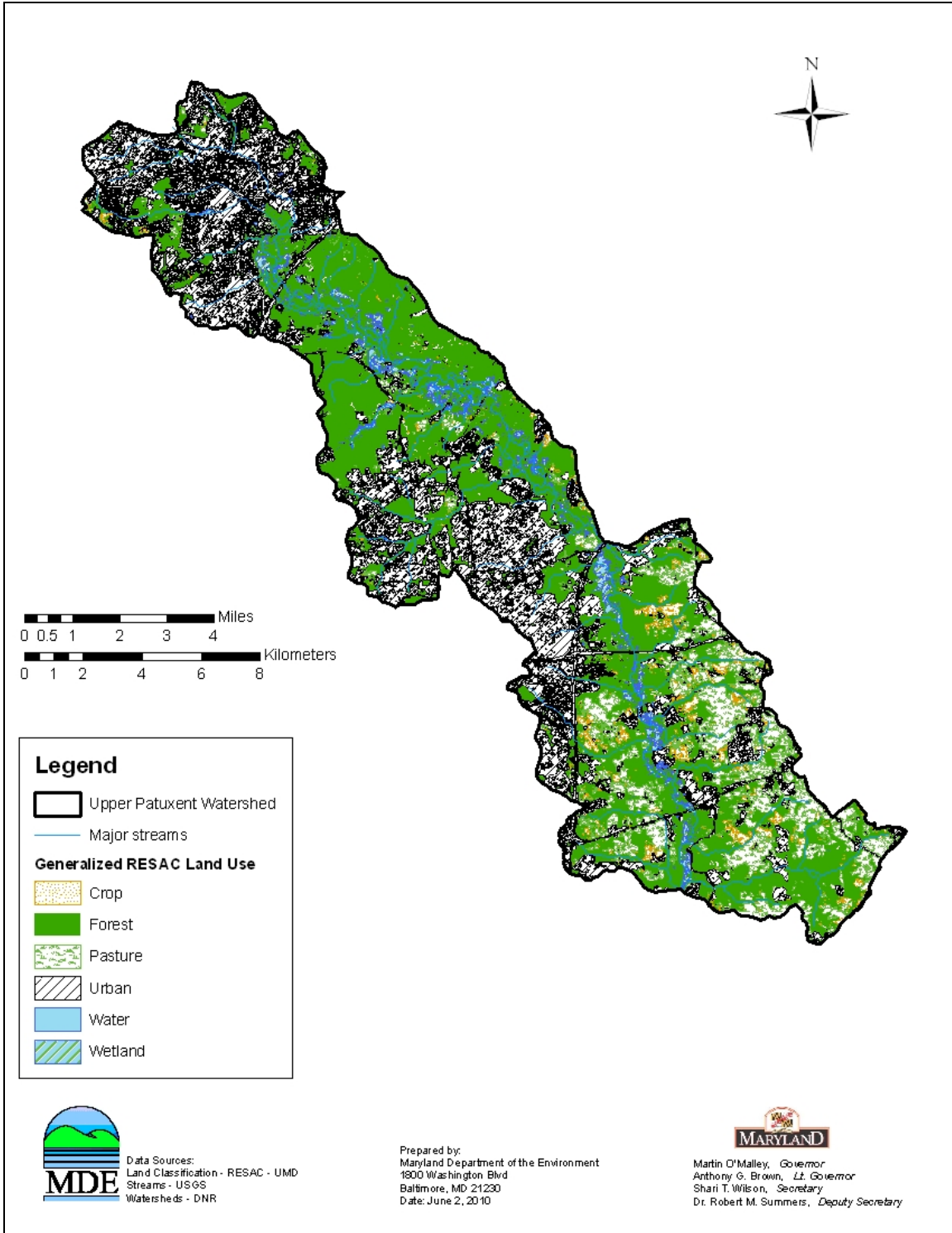


Figure 2: Land Use of the Patuxent River Upper Watershed

# FINAL

## 2.2 Source Assessment

The Patuxent River Upper Watershed Total Baseline Sediment Load consists of loads generated outside of the assessment unit, referred to as Upstream Baseline Loads, and loads generated within the assessment unit, referred to as the Patuxent River Upper Baseline Load Contribution. The Patuxent River Upper Baseline Load Contribution can be subdivided into nonpoint and point source loads. This section summarizes the methods used to derive each of these distinct source categories.

### 2.2.1 Nonpoint Source Assessment

In this document, the nonpoint source loads account for sediment loads from unregulated stormwater runoff within the Patuxent River Upper watershed. This section provides the background and methods for determining the nonpoint source baseline loads generated within the Patuxent River Upper watershed (Nonpoint Source  $BL_{UP}$ ).

#### **General load estimation methodology**

Nonpoint source sediment loads generated within the Patuxent River Upper watershed are estimated based on the *edge-of-stream (EOS) calibration target loading rates* from the CBP P5.2 model. This approach is based on the fact that not all of the *edge-of-field (EOF)* sediment load is delivered to the stream or river (some of it is stored on fields down slope, at the foot of hillsides, or in smaller rivers or streams that are not represented in the model). To calculate the actual EOS loads, a *sediment delivery ratio* (the ratio of sediment reaching a basin outlet compared to the total erosion within the basin) is used. Details of the methods used to calculate sediment load have been summarized in the report entitled *Chesapeake Bay Phase 5 Community Watershed Model* (US EPA 2009).

#### **Edge-of-Field Target Erosion Rate Methodology**

EOF target erosion rates for agricultural land uses and forested land use were based on erosion rates determined by the Natural Resource Inventory (NRI). NRI is a statistical survey of land use and natural resource conditions conducted by the Natural Resources Conservation Service (NRCS) (USDA 2006). Sampling methodology is explained by Nusser and Goebel (1997).

Estimates of average annual erosion rates for pasture and cropland are available on a county basis at five-year intervals, starting in 1982. Erosion rates for forested land uses are not available on a county basis from NRI; however, for the purpose of the Chesapeake Bay Program Phase 4.3 (CBP P4.3) watershed model, NRI calculated average annual erosion rates for forested land use on a watershed basis. These rates are still being used as targets in the CBP P5.2 model.

The average value of the 1982 and 1987 surveys was used as the basis for EOF target rates for pasture and cropland. The erosion rates from this period do not reflect best management practices (BMPs) or other soil conservation policies introduced in the wake of the effort to restore the Chesapeake Bay. To compensate for this, a BMP factor was included in the loading estimates using best available “draft” information from the CBP

**FINAL**

P5.2. For further details regarding EOF Erosion rates, please see Section 9.2.1 of the community watershed model documentation (US EPA 2009).

Rates for urban pervious, urban impervious, extractive, and barren land were based on a combination of best professional judgment, literature analysis, and regression analysis. Table 2 lists erosion rates specific to the Patuxent River Upper watershed.

**Table 2: Summary of EOF Erosion Rate Calculations**

<b>Land Use</b>	<b>Data Source</b>	<b>Anne Arundel County (tons/acre/year)</b>	<b>Howard County (tons/acre/year)</b>	<b>Prince George's County (tons/ac/year)</b>
Forest	Phase 2 NRI	0.29	0.5	0.34
Harvested Forest <sup>1</sup>	Average Phase 2 NRI (x 10)	3	3	3
Nursery	Pasture NRI (x 9.5)	4.47	30.4	1.5
Pasture	Pasture NRI (1982-1987)	0.47	3.2	2.99
Trampled pasture <sup>2</sup>	Pasture NRI (x 9.5)	4.47	30.4	28.41
Animal Feeding Operations <sup>2</sup>	Pasture NRI (x 9.5)	4.47	30.4	28.41
Hay <sup>2</sup>	Crop NRI (1982-1987) (x 0.32)	2.58	2.02	5.7
High Till <sup>2</sup>	Crop NRI (1982-1987) (x 1.25)	10.06	7.89	22.28
Low Till <sup>2</sup>	Crop NRI (1982-1987) (x 0.75)	6.04	4.73	13.37
Pervious Urban	Intercept Regression Analysis	0.74	0.74	0.74
Extractive	Best professional judgment	10	10	10
Barren	Literature survey	12.5	12.5	12.5
Impervious	100% Impervious Regression Analysis	5.18	5.18	5.18

**Notes:** <sup>1</sup>Based on an average of NRI values for the Chesapeake Bay Phase 5 segments.

<sup>2</sup>NRI score data adjusted based on land use.

## FINAL

**Sediment Delivery Ratio:** The base formula for calculating *sediment delivery ratios* in the CBP P5.2 model is the same as the formula used by the NRCS (USDA 1983).

$$DF = 0.417762 * A^{-0.134958} - 0.127097 \quad (\text{Equation 2.1})$$

Where:

DF (delivery factor) = the sediment delivery ratio

A = drainage area in square miles

In order to account for the changes in sediment loads due to distance traveled to the stream, the CBP P5.2 model uses the *sediment delivery ratio*. Land use specific *sediment delivery ratios* were calculated for each river segment using the following procedure:

- (1) mean distance of each land use from the river reach was calculated;
- (2) *sediment delivery ratios* for each land use were calculated (drainage area in Equation 2.1 was assumed to be equal to the area of a circle with radius equal to the mean distance between the land use and the river reach).

### Edge-of-Stream Loads

*Edge-of-stream* loads are the loads that actually enter the river reaches (i.e., the mainstem of a watershed). Such loads represent not only the erosion from the land but all of the intervening processes of deposition on hillsides and sediment transport through smaller rivers and streams. The formula for the EOS load calculation is as follows:

$$\sum_i^n EOS = Acres_i * EOF_i * SDR_i * BMP_i \quad (\text{Equation 2.2})$$

where:

n = number of land use classifications

i = land use classification

EOS = Edge of stream load, tons/yr

Acres = acreage for land use i

EOF = Edge-of-field erosion rate for land use i, tons/ac/yr

SDR = sediment delivery ratio for land use i, per Equation 2.1

BMP = BMP factor for land use i, as applicable

### Streambank Erosion

Many studies have documented the relationship between high amounts of connected impervious surfaces, increases in storm flows, and stream degradation in the form of streambank erosion (Schueler 1994; Arnold and Gibbons 1996). In many urbanized watersheds, small stream channels have been replaced by sewer pipes. As a result, impervious surfaces such as rooftops, parking lots, and road surfaces are now directly connected to the main stream channel via the storm sewer system. During a storm event, this causes a greater amount of precipitation to flow more rapidly into a given stream

## FINAL

channel once it reaches the surface. Furthermore, less water infiltrates into the ground both during and after a storm event, thereby limiting the amount of groundwater recharge to a stream. This altered urban hydrology typically causes abnormally high flows in streams during storms and abnormally low flows during dry periods. The high flows occurring during storm events increase sheer stress and cause excessive erosion of streambanks and streambeds, which leads to degraded stream channel conditions for biological communities (MDE 2007).

Two methods of estimating streambank erosion were presented in the *Total Maximum Daily Loads of Sediment/Total Suspended Solids for the Anacostia River Basin, Montgomery and Prince George's Counties, Maryland and The District of Columbia*. The first estimate uses the Anacostia Hydrological Simulation Program – FORTRAN (HSPF) watershed model in conjunction with the Penn State University streambank erosion equation (Evans et al. 2003). The analysis estimated that approximately 73% of the total annual sediment load within the Anacostia River watershed could be attributed to streambank erosion (MDE 2007).

The second method analyzes the long term relationship between flow and total suspended solids (TSS) concentrations to quantify the effects of an altered urban hydrology on watershed sediment loads. Changes in hydrology in the Anacostia River watershed were characterized using daily flow data from the USGS gage stations. The long-term changes over time in the flow duration curves (FDCs) for each of these stations was quantified using a type of statistical analysis known as “quantile regression”. The portion of the FDC representing the highest flows was determined to have increased significantly over time, consistent with hydrologic alteration from increased impervious surfaces. Also, a “sediment rating curve” (i.e., the relationship between suspended sediment concentration and flow) was computed and combined with the FDCs to estimate annual sediment loads before and after increased development (i.e., altered hydrology). The results of the analysis indicate that approximately 75% of the total annual sediment load in the Anacostia River watershed is due to alterations in hydrology (MDE 2007).

Using CBP P5.2 urban sediment EOF target values, MDE developed a formula for estimating the percent of the urban sediment load resultant from streambank erosion (i.e., that portion of the total urban sediment load attributed to stream bank erosion) based on the amount of impervious land within the total urban land use of a watershed. The assumption is that as impervious surfaces increase, the upland sources decrease, flow increases, and the change in sediment load results from increased streambank erosion. This formula recognizes that stream bank erosion can be a significant portion of both the urban sediment load and the total sediment load. The formula is as follows:

$$\%E = \frac{I * L_i}{I * L_i + (1 - I)L_p} \quad (\text{Equation 2.3})$$

where:

% E = Percent of urban sediment load resultant from streambank erosion

I = Percent impervious of urban land use acreage

## FINAL

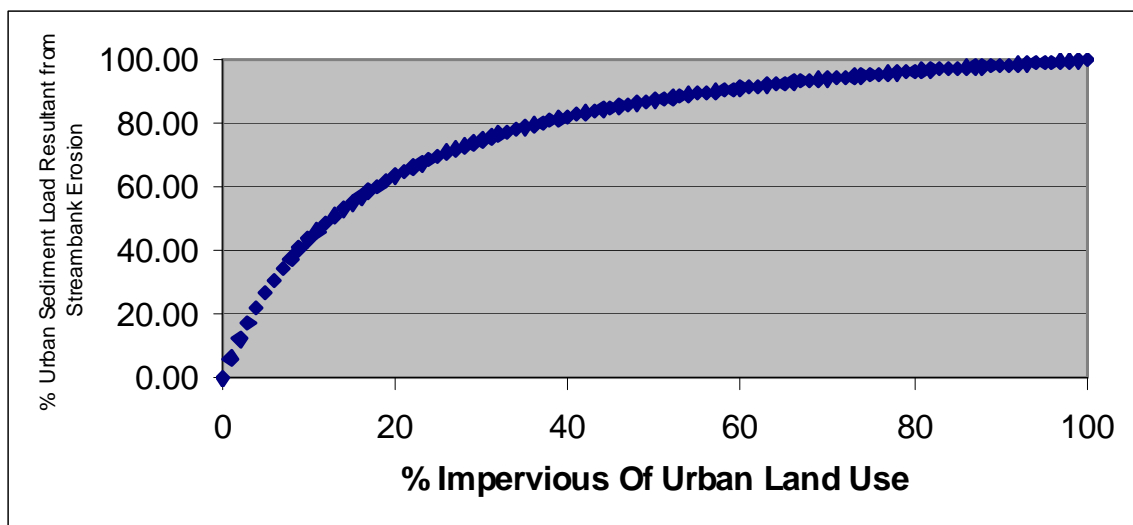
$L_i$  = Impervious urban land use EOF load

$L_p$  = Pervious urban land use EOF load

The relationship demonstrated in equation 2.3 is expressed graphically in Figure 3.

While this formula only represents an empirical approximation, it is consistent with results from the Anacostia River Sediment TMDL. Using the equation, the Anacostia River watershed (31% of urban land use covered by impervious surfaces) would equate to approximately a 74% urban sediment load resultant from streambank erosion. This translates to approximately 64% of the total Anacostia River watershed sediment load resulting from streambank erosion, since total urban land use accounts for approximately 86% of the total watershed sediment load. This is slightly less, but still consistent with, the other methods used to estimate the percent of the total watershed sediment load resultant from streambank erosion within the Anacostia River Sediment TMDL.

Per Table 1, approximately 24% of the Patuxent River Upper watershed urban land use is covered by impervious surfaces. This would equate to approximately a 69% urban sediment load resultant from stream bank erosion, or 30% of the total watershed sediment load.



**Figure 3: Percent Impervious of Urban Land Use vs. Percent of Urban Sediment Load Resultant from Streambank Erosion (Based on Equation 2.3)**

For this TMDL, the urban sediment load resultant from streambank erosion represents an aggregate load within the total urban impervious EOF loads as described in the report *Chesapeake Bay Phase V Community Watershed Model* (US EPA 2009) and is not explicitly reported.

### 2.2.2 Point Source Assessment

A list of 28 active permitted point sources that contribute to the sediment load in the Patuxent River Upper watershed was compiled using MDE's Environmental Permit

## **FINAL**

Service Center (EPSC) database. The types of permits identified include individual municipal, individual municipal separate storm sewer systems (MS4s), general mineral mining, general industrial stormwater, and general MS4s. The permits can be grouped into two categories, process water and stormwater. The process water category includes those loads generated by continuous discharge sources whose permits have TSS limits. Other permits that do not meet these conditions are considered *de minimis* in terms of the total sediment load. The stormwater category includes all National Pollutant Discharge Elimination System (NPDES) regulated stormwater discharges.

The sediment loads for the 6 process water permits (Process Water  $BL_{UP}$ ) are calculated based on their TSS limits (average monthly or weekly concentration values) and corresponding flow information. The 22 NPDES Phase I or Phase II stormwater permits identified throughout the Patuxent River Upper watershed are regulated based on BMPs and do not include TSS limits. In the absence of TSS limits, the NPDES regulated stormwater baseline load (NPDES Stormwater  $BL_{UP}$ ) is calculated using Equation 2.2 and watershed specific urban land use factors. A detailed list of the permits appears in Appendix B.

### **2.2.3 Upstream Loads Assessment**

For the purposes of this analysis, two upstream watersheds have been identified: 1) the Little Patuxent River watershed and 2) the Rocky Gorge Reservoir watershed. Subsequently, sediment baseline loads from these watersheds will be presented as a Little Patuxent River Upstream Baseline Load ( $BL_{LP}$ ) and a Rocky Gorge Reservoir Upstream Baseline Load ( $BL_{RG}$ ). The  $BL_{LP}$  is estimated based on the same nonpoint source load estimation methodology described in Section 2.2.1 and is presented in the Sediment TMDL for the Little Patuxent River watershed (MDE 2010c). Because there is currently no sediment TMDL for the Rocky Gorge Reservoir, the  $BL_{RG}$  is calculated within this analysis as described in Appendix D. Additional information regarding sources of sediment (i.e., upstream) to the Rocky Gorge Reservoir can be found in the Phosphorus and Sediment TMDLs for the Triadelphia Reservoir and the Phosphorus TMDL for the Rocky Gorge Reservoir (MDE 2008b).

### **2.2.4 Summary of Baseline Loads**

Table 3 summarizes the Patuxent River Upper Baseline Sediment Load, reported in tons per year (ton/yr) and presented in terms of Upstream Baseline Loads and Patuxent River Upper Watershed Baseline Load Contribution nonpoint and point source loadings.



**Table 3: Patuxent River Upper Baseline Sediment Loads (ton/yr)**

Total Baseline Load (ton/yr)	Upstream Baseline Load <sup>1</sup>		Patuxent River Upper Watershed Baseline Load Contribution				
	BL <sub>LP</sub> <sup>2</sup>	BL <sub>RG</sub> <sup>3</sup>	Nonpoint Source BL <sub>UP</sub>	NPDES Stormwater BL <sub>UP</sub>	Process Water BL <sub>UP</sub>		
66,421.1	37,066.5	7,689.0	11,956.1	9,102.0	607.5		

- Notes:**
- <sup>1</sup> Although the Upstream Baseline Loads are reported here as single values, they could include point and nonpoint sources.
  - <sup>2</sup> For the Little Patuxent River watershed point and nonpoint source characterization, please refer to the “Total Maximum Daily Load of Sediment in the Little Patuxent River Watershed, Howard and Anne Arundel Counties, Maryland” (MDE 2010c).
  - <sup>3</sup> For the Rocky Gorge Reservoir point and nonpoint source characterization, please refer to Appendix D, and for additional information regarding other sources of sediment to the reservoir (i.e., upstream sources) see the “Total Maximum Daily Loads of Phosphorus and Sediments for Triadelphia Reservoir (Brighton Dam) and Total Maximum Daily Loads of Phosphorus for Rocky Gorge Reservoir, Howard, Montgomery, and Prince George’s Counties, Maryland” (MDE 2008b).

Table 4 presents a breakdown of baseline loads generated within the Patuxent River Upper watershed, detailing loads per land use. The majority of the sediment load is from urban land (42%) and crop land (41%). The next largest sediment sources are forest (10.3%) and pasture (1.7%).

**Table 4: Detailed Baseline Sediment Budget Loads Generated Within the Patuxent River Upper Watershed**

<b>General Land Use</b>	<b>Description</b>	<b>Load (Ton/Yr)</b>	<b>Percent</b>	<b>Grouped Percent of Total</b>
Crop	Animal Feeding Operations	31.7	0.1	41.0
	Hay	871.4	4.0	
	High Till	4564.6	21.1	
	Low Till	3411.6	15.7	
	Nursery	12.4	0.1	
Extractive	Extractive	474.3	2.2	2.2
Forest	Forest	2030.2	9.4	10.3
	Harvested Forest	195.0	0.9	
Pasture	Pasture	364.8	1.7	1.7
	Trampled Pasture	0.0	0.0	
Urban <sup>1</sup>	Urban: Barren	718.8	3.3	42.0
	Urban: Impervious	5831.5	26.9	
	Urban: Pervious	2551.8	11.8	
	Process Water	607.5	2.8	2.8
	<b>Total<sup>2</sup></b>	<b>21,665.6</b>	<b>100.0</b>	<b>100.0</b>

**Notes:** <sup>1</sup> The Maryland urban land use load represents the permitted stormwater load.

<sup>2</sup> The Patuxent River Upper watershed receives direct upstream loads from the Little Patuxent River watershed and the Rocky Gorge Reservoir. The Little Patuxent River Upstream Baseline Load 37,066.5 ton/yr is estimated in the sediment TMDL for the watershed (MDE 2010c), and the Rocky Gorge Reservoir Upstream Baseline Load of 7,689 ton/yr is estimated within Appendix D of this analysis, and additional information regarding other sources of sediment (i.e., upstream) to the Reservoir can be found in the Phosphorus and Sediment TMDLs for the Triadelphia Reservoir and the Phosphorus TMDL for the Rocky Gorge Reservoir (MDE 2008b).

## FINAL

### 2.3 Water Quality Characterization

The Patuxent River Upper watershed was originally listed on Maryland's 1996 303(d) List as impaired by elevated sediments from nonpoint sources, with supporting evidence cited in Maryland's 1996 305(b) report. The 1996 305(b) report did not directly state that elevated sediments were a concern, and it has been determined that the sediment listing was based on best professional judgment (MDE 2004; DNR 1996).

Currently in Maryland, there are no specific numeric criteria for suspended sediments. Therefore, to determine whether aquatic life is impacted by elevated sediment loads, MDE's BSID methodology was applied. The primary goal of the BSID analysis is to identify the most probable cause(s) for observed biological impairments throughout MD's 8-digit watersheds (MDE 2009a).

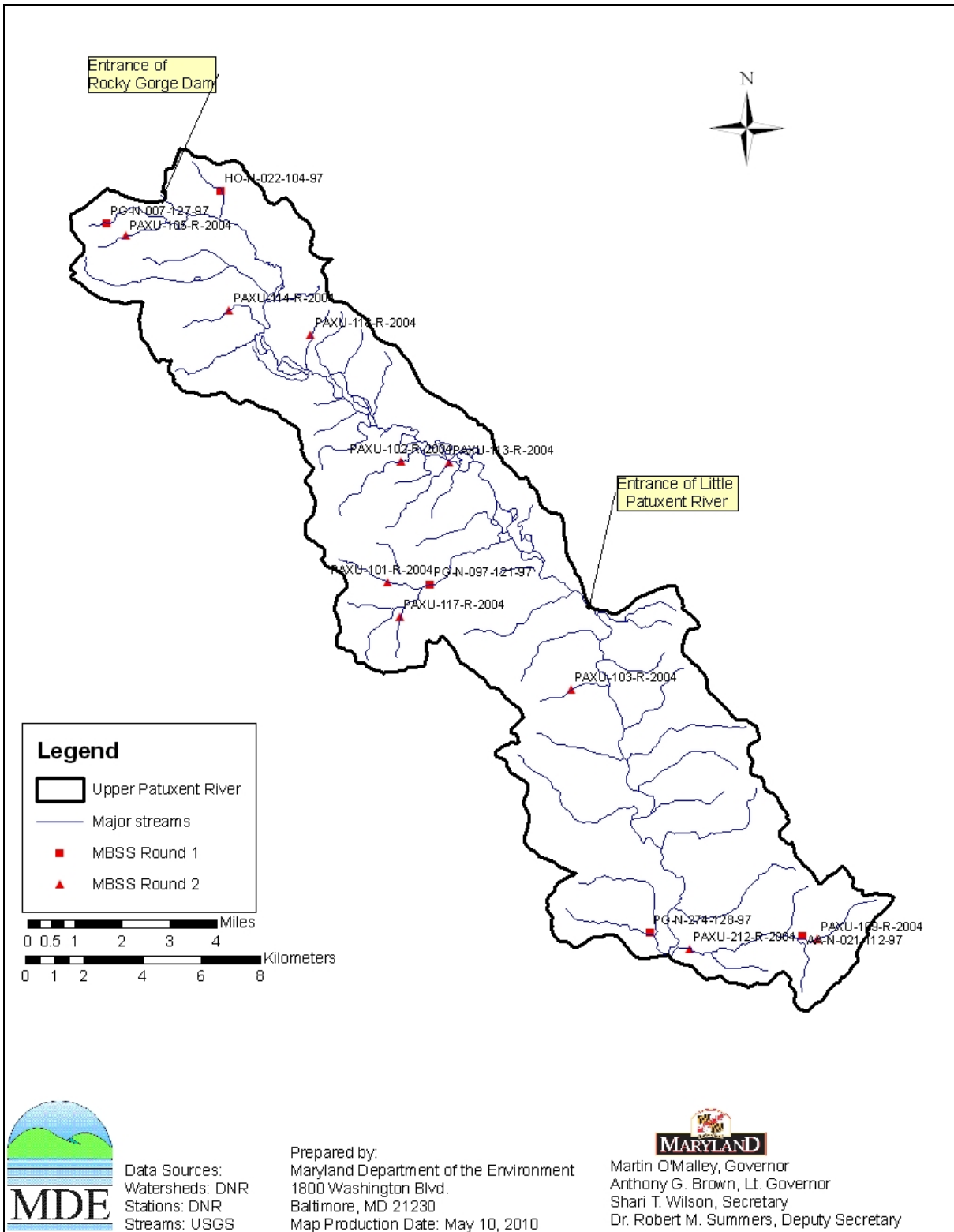
The BSID analysis applies a case-control, risk-based, weight-of-evidence approach to identify potential causes of biological impairment. The risk-based approach estimates the strength of association between various stressors and an impaired biological community. The BSID analysis then identifies individual stressors (pollutants) as probable or unlikely causes of the poor biological conditions, within a given MD 8-digit watershed, and subsequently reviews ecological plausibility. Finally, the analysis concludes whether or not these individual stressors or groups of stressors are contributing to the impairment (MDE 2009a).

The primary dataset for BSID analysis is Maryland Department of Natural Resources (DNR) Maryland Biological Stream Survey (MBSS) round two data (collected between 2000-2004) because it provides a broad spectrum of paired data variables, which allow for a more comprehensive stressor analysis. The MBSS is a robust statewide probability-based sampling survey for assessing the biological conditions of wadeable, non-tidal streams (Klauda et al. 1998; Roth et al. 2005). It uses a fixed length (75 meter (m)) randomly selected stream segment for collecting site level information within a primary sampling unit (PSU), also defined as a watershed. The randomly selected stream segments, from which field data are collected, are selected using either stratified random sampling with proportional allocation, or simple random sampling (Cochran 1977). The random sample design allows for unbiased estimates of overall watershed conditions. Thus, the dataset facilitated case-control analyses because 1) in-stream biological data are paired with chemical, physical, and land use data variables that could be identified as possible stressors and 2) it uses a probabilistic statewide monitoring design.

The BSID analysis combines the individual stressors (physical and chemical variables) into three generalized parameter groups in order to assess how the resulting impacts of these stressors can alter the biological community and structure. The three generalized parameter groups include: sediment, habitat, and water chemistry. Identification of a sediment/flow stressor as contributing to the biological impairment is based on the results of the individual stressor associations within both the sediment and habitat parameters that reveal the effects of sediment related impacts or an altered hydrologic regime (MDE 2009a).

**Patuxent River Upper Watershed Monitoring Stations**

A total of 15 water quality monitoring stations were used to characterize the Patuxent River Upper Watershed in Maryland's 2008 Integrated Report. All 15 stations were biological/physical habitat monitoring stations from the MBSS program round one and two data collection. The BSID analysis used the 10 biological/physical habitat monitoring stations from the MBSS program round two data collection collected in 2004. All stations are presented in Figure 4 and listed in Table 5.



**Figure 4: Monitoring Stations in the Patuxent River Upper Watershed**

**FINAL**

**Table 5: Monitoring Stations in the Patuxent River Upper Watershed**

<b>Site Number</b>	<b>Sponsor</b>	<b>Site Type</b>	<b>Site Name</b>	<b>Latitude (dec degrees)</b>	<b>Longitude (dec degrees)</b>
AA-N-021-112-97	MD DNR	MBSS, Round 1	Stocketts Run	38.8890	-76.6230
HO-N-022-104-97	MD DNR	MBSS, Round 1	Patuxent River, Unnamed Tributary 3	39.1180	-76.8510
PG-N-007-127-97	MD DNR	MBSS, Round 1	Walker Branch, Unnamed Tributary 1	39.1080	-76.8960
PG-N-097-121-97	MD DNR	MBSS, Round 1	Horsepen Branch	38.9970	-76.7690
PG-N-274-128-97	MD DNR	MBSS, Round 1	Honey Branch	38.8900	-76.6830
PAXU-101-R-2004	MD DNR	MBSS, Round 2	Newstop Branch	38.9977	-76.7859
PAXU-102-R-2004	MD DNR	MBSS, Round 2	Patuxent River, Unnamed Tributary 11	39.0349	-76.7801
PAXU-103-R-2004	MD DNR	MBSS, Round 2	Patuxent River, Unnamed Tributary 9	38.9646	-76.7139
PAXU-105-R-2004	MD DNR	MBSS, Round 2	Walter Branch	39.1042	-76.8884
PAXU-109-R-2004	MD DNR	MBSS, Round 2	Stocketts Run	38.8880	-76.6174
PAXU-113-R-2004	MD DNR	MBSS, Round 2	Patuxent River, Unnamed Tributary 10	39.0344	-76.7615
PAXU-114-R-2004	MD DNR	MBSS, Round 2	Crow Branch, Unnamed Tributary	39.0814	-76.8478
PAXU-117-R-2004	MD DNR	MBSS, Round 2	Horsepen Branch, Unnamed Tributary	38.9870	-76.7811
PAXU-118-R-2004	MD DNR	MBSS, Round 2	Patuxent River, Unnamed Tributary 9	39.0737	-76.8158
PAXU-212-R-2004	MD DNR	MBSS, Round 2	Stocketts Run	38.8850	-76.6675

## **2.4 Water Quality Impairment**

The Maryland water quality standards surface water use designation for the Patuxent River Upper mainstem and its tributaries is Use I (Water Contact Recreation and Protection of Aquatic Life) (COMAR 2009a,b). The water quality impairment of the Patuxent River Upper watershed addressed by this TMDL is caused by an elevated sediment load beyond a level that the watershed can sustain, thereby causing sediment related impacts that can not support aquatic life. Assessment of aquatic life is based on benthic and fish Index of Biotic Integrity (IBI) scores, as demonstrated via the BSID analysis for the watershed.

The Patuxent River Upper watershed is listed on Maryland's 2008 Integrated Report as impaired for impacts to biological communities. The biological impairment listing is based on the combined results of MBSS round one (1995-1997) and round two (2000-2004) data, which includes 15 stations. Eleven of the 15 stations, or 73% of the stream miles in the watershed, are assessed as having BIBI and/or FIBI scores significantly lower than 3.0 (on a scale of 1 to 5) (MDE 2008a). As mentioned in Section 2.3, however, only MBSS round two data were used in the BSID analysis. See Figure 4 and Table 5 for station locations and information.

The results of the BSID analysis for the Patuxent River Upper watershed are presented in a report entitled *Watershed Report for Biological Impairment of the Upper Patuxent River Watershed in Anne Arundel and Howard Counties, Maryland Biological Stressor Identification Analysis Results and Interpretation*. The report states that the degradation of biological communities in the Patuxent River Upper watershed is strongly associated with urban land use and its concomitant effects (MDE 2010a).

The BSID analysis has determined that the biological impairment in the Patuxent River Upper watershed is due in part to flow/sediment related stressors. Specifically, the analysis confirmed that individual stressors within the sediment and habitat parameter groupings were contributing to the biological impairment in the watershed. Overall, stressors within the sediment and habitat parameter groupings were identified as having a statistically significant association with impaired biological communities at approximately 40% and 65%, respectively, of the sites with BIBI and/or FIBI scores significantly less than 3.0 throughout the watershed (MDE 2010a). Therefore, since sediment is identified as a stressor to the biological communities in the Patuxent River Upper watershed, the results confirm the 1996 sediment listing, and a TMDL is required.

### **3.0 TARGETED WATER QUALITY GOAL**

The objective of the sediment TMDL established herein is to reduce sediment loads, and subsequent effects on aquatic life, in the Patuxent River Upper watershed to levels that support the Use I designation (Water Contact Recreation and Protection of Aquatic Life) (COMAR 2009a,b). Assessment of aquatic life is based on Maryland's biocriteria protocol, which evaluates both the amount and diversity of the benthic and fish community through the use of the IBI (Roth et al. 1998, 2000; Stribling et al. 1998; MDE 2008a).

Reductions in sediment loads are expected to result from decreased watershed and streambed erosion, which will then lead to improved benthic and fish habitat conditions. Specifically, sediment load reductions are expected to result in an increase in the number of benthic sensitive species present, an increase in the available and suitable habitat for a benthic community, a possible decrease in fine sediment (fines), and improved stream habitat diversity, all of which will result in improved water quality.

The sediment TMDL, however, will not completely resolve the impairment to biological communities within the watershed. Since the BSID watershed analysis identifies other possible stressors (i.e., acute ammonia toxicity, chlorides, and sulfates) as impacting the biological conditions, this impairment remains to be fully addressed through the Integrated Report listing process and the TMDL development process, such that all impairing substances identified as impacting biological communities in the watershed are reduced to levels that will meet water quality standards, as established in future TMDLs for those substances (MDE 2009a, 2010a).



## 4.0 TOTAL MAXIMUM DAILY LOADS AND SOURCE ALLOCATION

### 4.1 Overview

This section describes how the sediment TMDL and the corresponding allocations were developed for the Patuxent River Upper watershed. Section 4.2 describes the analysis framework for estimating sediment loading rates and the assimilative capacity of the watershed stream system. Section 4.3 summarizes the scenarios that were used in the analysis and presents results. Section 4.4 discusses critical conditions and seasonality. Section 4.5 explains the calculations of TMDL loading caps. Section 4.6 details the load allocations, and Section 4.7 explains the rationale for the MOS. Finally, Section 4.8 summarizes the TMDL.

### 4.2 Analysis Framework

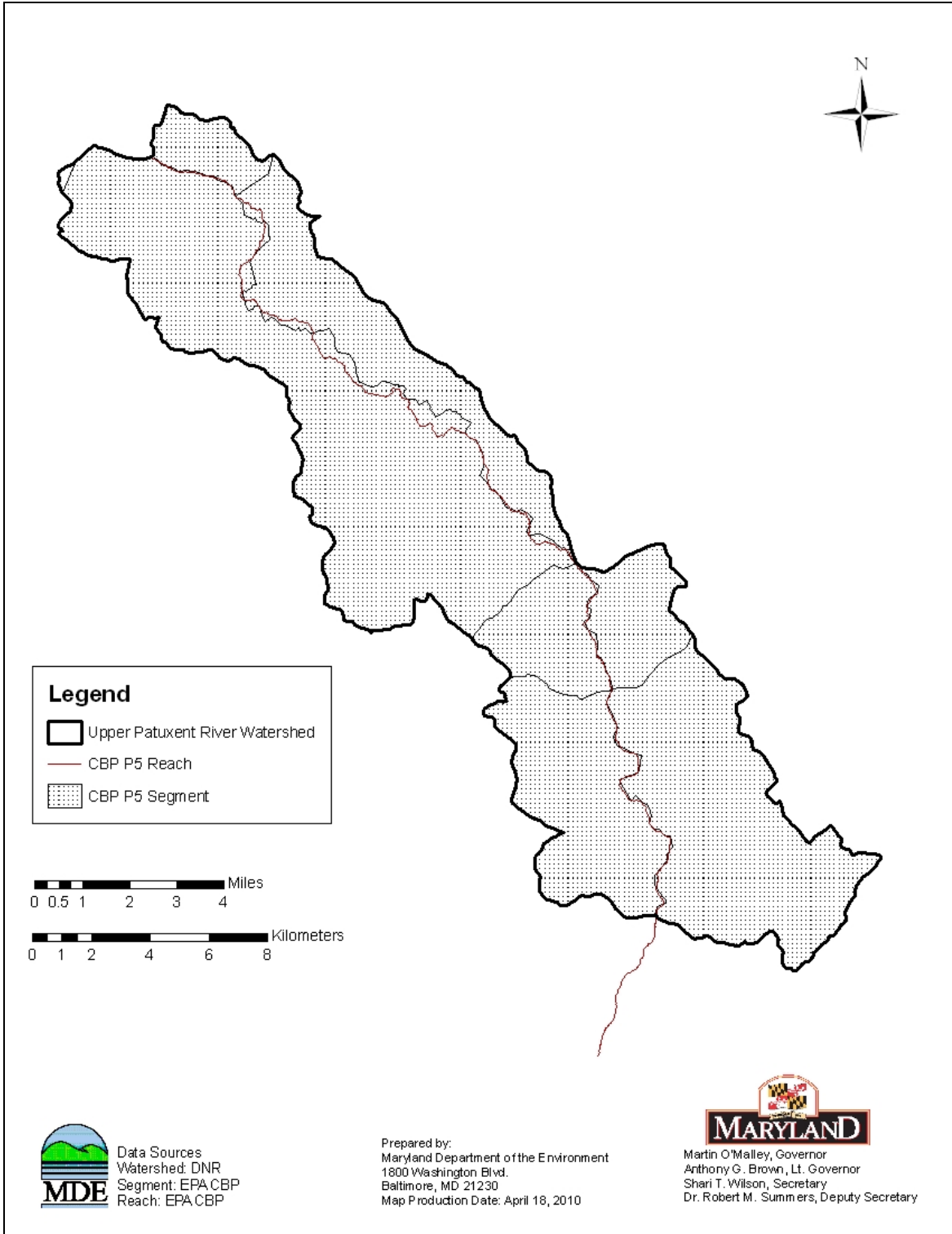
Since there are no specific numeric criteria that quantify the impact of sediment on the aquatic life of nontidal stream systems, a reference watershed approach will be used to establish the TMDL. Furthermore, as the BSID analysis established a link between biological impairment and sediment related stressors, the reference watershed approach will utilize a biological endpoint.

#### Watershed Model

The watershed model framework chosen for the Patuxent River Upper watershed TMDL was the CBP P5.2 long-term average annual watershed model EOS loading rates. The spatial domain of the CBP P5.2 watershed model segmentation aggregates to the MD 8-digit watersheds, which is consistent with the impairment listing. The EOS loading rates were used because actual time variable CBP P5.2 calibration and scenario runs were not available upon development of the nontidal sediment TMDL methodology (Currey et al. 2006). These target-loading rates have been used to calibrate the land use EOS loads within the CBP P5.2 model and thus should be consistent with future CBP modeling efforts.

The nonpoint source and NPDES stormwater baseline sediment loads generated within the Patuxent River Upper watershed are calculated as the sum of corresponding land use EOS loads within the watershed and represent a long-term average loading rate. Individual land use EOS loads are calculated as a product of the land use area, land use target loading rate, and loss from the EOF to the main channel. The loss from the EOF to the main channel is the *sediment delivery ratio* and is defined as the ratio of the sediment load reaching a basin outlet to the total erosion within the basin. A *sediment delivery ratio* is estimated for each land use type based on the proximity of the land use to the main channel. Thus, as the distance to the main channel increases, more sediment is stored within the watershed (i.e., *sediment delivery ratio* decreases). Details of the data sources for the unit loading rates can be found in Section 2.2 of this report.

The Patuxent River Upper watershed was evaluated using one watershed TMDL segment consisting of seven CBP P5.2 model segments (see Figure 5).



**Figure 5: Patuxent River Upper Watershed TMDL Segmentation**

### **Reference Watershed Approach**

Currently in Maryland, there are no specific numeric criteria that quantify the impact of sediment on the aquatic life of non-tidal stream systems. Therefore, in order to quantify the impact of sediment on the aquatic life of non-tidal stream systems, a reference watershed TMDL approach was used and resulted in the establishment of a *sediment loading threshold* for watersheds within the Highland and Piedmont physiographic regions (Currey et al. 2006). Reference watersheds were determined based on Maryland's biocriteria methodology. The biocriteria methodology assesses biological impairment at the 8-digit watershed scale based on the percentage of MBSS monitoring stations, translated into watershed stream miles, that have BIBI and/or FIBI scores lower than the Minimum Allowable IBI Limit (MAL). The MAL is calculated based on the average annual allowable IBI value of 3.0 (on a scale of 1 to 5). It accounts for variability and helps avoid classification errors (i.e., false positives) when assessing for biological impairments (Roth et al. 1998, 2000; Stribling et al. 1998; MDE 2008a).

Comparison of watershed sediment loads to loads from reference watersheds requires that the watersheds be similar in physical and hydrological characteristics. To satisfy this requirement, Currey et al. (2006) selected reference watersheds only from the Highland and Piedmont physiographic regions. This region is consistent with the non-coastal region that was identified in the 1998 development of FIBI and subsequently used in the development of BIBI (Roth et al. 1998; Stribling et al. 1998).

For the establishment of this specific TMDL, however, since the Patuxent River Upper lies almost completely within the Coastal Plain geologic province (see Section 2.1), reference watersheds, which were identified as supporting aquatic life on Maryland's 2008 Integrated Report, were selected from the nontidal Coastal Plain region, rather than the Piedmont and Highland Region, as described in Currey et al. (2006) (see appendix A for the list of reference watersheds). The same methodology as described in Currey et al. (2006) for the selection of the Highland and Piedmont reference watersheds was used to select the Coastal Plain reference watersheds. Furthermore, all subsequent methodologies used to establish the TMDL end point, based on these reference watersheds, are exactly the same as those described in Currey et al. (2006).

To reduce the effect of the variability within the Coastal Plain physiographic region (i.e., soils, slope, etc.), the watershed sediment loads were then normalized by a constant background condition, the all forested watershed condition. This new normalized term, defined as the *forest normalized sediment load* ( $Y_n$ ), represents how many times greater the current watershed sediment load is than the *all forested sediment load*. A similar approach was used by EPA Region IX for sediment TMDLs in California (e.g., Navarro River or Trinity River TMDLs), where the loading capacity was based on an analysis of the amount of human-caused sediment delivery that can occur in addition to natural sediment delivery, without causing adverse impacts to aquatic life. The *forest normalized sediment load* for this TMDL is calculated as the current watershed sediment load divided by the *all forested sediment load*. The equation for the *forest normalized sediment load* is as follows:

$$Y_n = \frac{y_{ws}}{y_{for}} \quad (\text{Equation 4.1})$$

where:

- $Y_n$  = forest normalized sediment load
- $y_{ws}$  = current watershed sediment load (ton/yr)
- $y_{for}$  = all forested sediment load (ton/yr)

Six reference watersheds were selected from the nontidal Coastal Plain region. Reference watershed *forest normalized sediment loads* were calculated using CBP P5.2 2000 land use in order to maintain consistency with MBSS sampling years. The median and 75<sup>th</sup> percentile of the reference watershed *forest normalized sediment loads* were calculated and found to be 4.8 and 5.1 respectively. The median value of 4.8 was established as the *sediment loading threshold* as an environmentally conservative approach to develop this TMDL (see Appendix A for more details).

The *forest normalized sediment load* for the Patuxent River Upper watershed (estimated as 5.1) was calculated using CBP P5.2 2005 land use, to best represent current conditions. A comparison of the Patuxent River Upper watershed *forest normalized sediment load* to the *forest normalized reference sediment load* (also referred to as the *sediment loading threshold*) demonstrates that the watershed exceeds the *sediment loading threshold*, indicating that it is receiving loads that are above the maximum allowable load that it can sustain and still meet water quality standards.

### 4.3 Scenario Descriptions and Results

The following analyses allow a comparison of baseline conditions (under which water quality problems exist) with future conditions, which project the water quality response to various simulated sediment load reductions. The analyses are grouped according to baseline conditions and future conditions associated with TMDLs.

#### **Baseline Conditions**

The baseline conditions are intended to provide a point of reference by which to compare the future scenario that simulates conditions of a TMDL. The baseline conditions typically reflect an approximation of nonpoint source loads during the monitoring time frame, as well as estimated point source loads based on discharge data for the same period.

The Patuxent River Upper watershed baseline sediment loads are estimated using the CBP P5.2 target EOS land use sediment loading rates with 2005 land use. Watershed loading calculations, based on the CBP P5.2 segmentation scheme, are often represented by multiple CBP P5.2 model segments within each TMDL segment. The sediment loads from these segments are combined to represent the baseline condition. The Patuxent River Upper watershed consists of seven CBP P5.2 model segments. The point source

## FINAL

sediment loads are estimated based on the existing permit information. Details of these loading source estimates can be found in Section 2.2 and Appendix B of this report.

### **TMDL Conditions**

This scenario represents the future conditions of maximum allowable sediment loads that will be at a level to support aquatic life. In the TMDL calculation, the allowable load for the impaired watershed is calculated as the product of the *sediment loading threshold* (determined from watersheds with a healthy biological community) and the Patuxent River Upper *all forested sediment load* (see Section 4.2). The resulting load is considered the maximum allowable load the watershed can sustain and support aquatic life.

The TMDL loading and associated reductions are averaged at the MD 8-digit watershed scale, which is consistent with the original listing scale. It is important to recognize that some subwatersheds may require higher reductions than others, depending on the distribution of the land use.

The formula for estimating the TMDL is as follows:

$$TMDL = \sum_{i=1}^n Yn_{ref} \cdot y_{forest_i} \quad (\text{Equation 4.2})$$

where

TMDL = allowable load for impaired watershed (ton/yr)

$Yn_{ref}$  = sediment loading threshold = forest normalized reference sediment load (4.8)

$y_{forest_i}$  = all forested sediment load for CBP P5.2 model segment  $i$  (ton /yr)

$i$  = CBP P5.2 model segment

$n$  = number of CBP P5.2 model segments in watershed

The Patuxent River Upper watershed allowable sediment load is estimated using equation 4.2.

### **4.4 Critical Condition and Seasonality**

EPA's regulations require TMDLs to take into account seasonality and critical conditions for stream flow, loading, and water quality parameters (CFR 2009b). The intent of this requirement is to ensure that the water quality of the waterbody is protected during times when it is most vulnerable. The biological monitoring data used to determine the reference watersheds reflect the impacts of stressors (i.e., sediment impacts to stream biota) over the course of time and therefore depict an average stream condition (i.e., captures all high and low flow events). Since the TMDL endpoint is based on the median of forest normalized loads from watersheds assessed as having good biological conditions (i.e., passing Maryland's biocriteria), by the nature of the biological data described above, it must inherently include the critical conditions of the reference watersheds. Therefore, since the TMDL reduces the watershed sediment load to a level compatible with that of the reference watersheds, critical conditions are inherently addressed.

## FINAL

Seasonality is captured in two components. First, it is implicitly included through the use of the biological monitoring data as biological communities reflect the impact of stressors over time, as described above. Second, the MBSS dataset included benthic sampling in the spring (March 1 - April 30) and fish sampling in the summer (June 1 - September 30). Benthic sampling in the spring allows for the most accurate assessment of the benthic population, and therefore provides an excellent means of assessing the anthropogenic effects of sediment impacts on the benthic community. Fish sampling is conducted in the summer when low flow conditions significantly limit the physical habitat of the fish community, and it is therefore most reflective of the effects of anthropogenic stressors as well.

### 4.5 TMDL Loading Caps

This section presents the Patuxent River Upper watershed average annual sediment TMDL. This load is considered the maximum allowable long-term average annual sediment load the watershed can sustain and support aquatic life.

The long-term average annual TMDL was calculated based on Equation 4.2 and set at a load 4.8 times the all forested condition. In order to attain the TMDL loading cap calculated for the watershed, constant reductions were applied to the predominant controllable sources (i.e., significant contributors of sediment to the stream system), independent of jurisdiction. If only these predominant (generally the largest) sources are controlled, water quality standards can be achieved in the most effective, efficient, and equitable manner. Predominant sources typically include urban land, high till crops, low till crops, hay, and pasture, but additional sources could be controlled as well in order to ensure that the TMDL is attained. Urban land, high till crops, low till crops, and hay were identified as the predominant controllable sources in the watershed. Thus, constant reductions were applied to these sources. Additionally, all urban land in the Patuxent River Upper watershed is considered to represent regulated stormwater sources (i.e., all urban stormwater is regulated via a permit).

Relative to the estimated sediment load reductions applied to urban land, which are necessary to achieve the TMDL, MDE currently requires that Phase I MS4s retrofit 10% of their existing impervious area where there is failing, minimal, or no stormwater management (estimated to be areas developed prior to 1985) within a permit cycle (five years) (i.e., Phase I MS4s need to install/institute stormwater management practices to treat runoff from these existing impervious areas) (MDE 2009b). Theoretically extending these permitting requirements to all urban stormwater sources (i.e., not solely those sources regulated via Phase I MS4 permits) would require that all impervious areas developed prior to 1985 be retrofit at this pace. Additionally, MDE estimates that future stormwater retrofits will have, on average, a 65% TSS reduction efficiency (Claytor and Schueler 1997; Baldwin et al. 2007; Baish and Caliri 2009). By default, these retrofits will also provide treatment of any adjacent urban pervious runoff within the applicable drainage area.

The Patuxent River Upper Baseline Load and TMDL are presented in Table 6.

**Table 6: Patuxent River Upper Baseline Load and TMDL**

<b>Baseline Load (ton/yr)<sup>1</sup></b>	<b>TMDL (ton/yr)<sup>1</sup></b>	<b>Reduction (%)</b>
66,421.1	56,607.1	14.8

**Note:**<sup>1</sup>The load summary includes upstream loads from the Little Patuxent River watershed and the Rocky Gorge Reservoir.

#### **4.6 Load Allocations Between Point and Nonpoint Sources**

Per EPA regulation, all TMDLs need to be presented as a sum of waste load allocations (WLAs) for point sources and load allocations (LAs) for nonpoint source loads generated within the assessment unit, accounting for natural background, tributary, and adjacent segment loads (CFR 2009a). Consequently, the Patuxent River Upper watershed TMDL allocations are presented in terms of WLAs (i.e., point source loads identified within the watershed) and LAs (i.e., the nonpoint source loads within the watershed and loads entering the watershed from outside of the assessment unit). The State reserves the right to allocate the TMDL among different sources in any manner that protects aquatic life from sediment related impacts.

As described in section 4.5, reductions were applied equally to the predominant controllable sources, which were identified as urban land, high till crops, low till crops, and hay. Forest is the only non-controllable source, as it represents the most natural condition in the watershed, and no reductions were applied to permitted process load sources, since such controls would produce no discernable water quality benefit when nonpoint sources and regulated stormwater sources comprise 97.2% of the sediment loads generated within the Patuxent River Upper watershed.

Based on the current Phase I MS4 permit requirements described in Section 4.5 and the theoretical extension of these requirements to all urban stormwater sources, it is anticipated that the urban sediment load reductions necessary to achieve the TMDL will be achieved by retrofitting impervious areas within the watershed developed prior to 1985 (i.e., approximate areas with failing, minimal, or no stormwater management) (MDE 2009b). Also, it is expected that these future stormwater retrofits will have an estimated 65% TSS reduction efficiency (Claytor and Schueler 1997; Baldwin et al. 2007; Baish and Caliri 2009), and by default, they will provide treatment of any adjacent urban pervious runoff within the applicable drainage area.

Table 7 summarizes the TMDL results derived by applying equal percent reductions to the predominant controllable sediment sources. The TMDL results in a reduction of 9.4% for the Patuxent River Upper Watershed Contribution, and an overall reduction of 14.8%. For more detailed information regarding the Patuxent River Upper Watershed TMDL nonpoint source LA, please see the technical memorandum to this document entitled “*Significant Sediment Nonpoint Sources in the Patuxent River Upper Watershed*”. The reductions from the urban sector required to meet this TMDL would entail that at a 65% TSS reduction efficiency, approximately 26% of the urban area (impervious and

**FINAL**

pervious) within the watershed that was developed prior to 1985 would need to be retrofit, or an equivalent reduction in sediment loads from other types of stormwater retrofits is necessary (see Section 5.0 for a detailed description of the other types of stormwater retrofits).

**Table 7: Patuxent River Upper TMDL Reductions by Source Category**

	<b>Baseline Load Source Categories</b>		<b>Baseline Load (ton/yr)</b>	<b>TMDL Components</b>	<b>TMDL (ton/yr)</b>	<b>Reduction (%)</b>
<b>Patuxent River Upper Watershed Contribution</b>	<b>Nonpoint Source</b>		11,956.1	<b>LA</b>	10,966.2	8.3
	<b>Point Source</b>	Urban	9,102.0	<b>WLA</b>	8,064.6	11.4
		Permits	607.5		607.5	0.0
<b>Sub-total</b>			<b>21,665.6</b>		<b>19,638.3</b>	<b>9.4</b>
<b>Upstream</b>	Little Patuxent <sup>1</sup>		37,066.5	<b>Upstream LA</b>	31,199.8	13.5
	Rocky Gorge Reservoir <sup>2</sup>		7,689.0		5,769.0	25.0
<b>Total</b>			<b>66,421.1</b>		<b>56,607.1</b>	<b>14.8</b>

**Notes:** <sup>1</sup> For Little Patuxent River watershed WLA and LA characterization, please refer to the “Total Maximum Daily Load of Sediment in the Little Patuxent River Watershed, Howard and Anne Arundel Counties, Maryland” (MDE 2010c).

<sup>2</sup> For Rocky Gorge Reservoir WLA and LA characterization, please refer to Appendix D, and for additional information regarding other sources of sediment to the reservoir (i.e., upstream sources) see the “Total Maximum Daily Loads of Phosphorus and Sediments for Triadelphia Reservoir (Brighton Dam) and Total Maximum Daily Loads of Phosphorus for Rocky Gorge Reservoir, Howard, Montgomery, and Prince George’s Counties, Maryland” (MDE 2008b).

The WLA of the Patuxent River Upper watershed is allocated to two permitted source categories, Process Water WLA and Stormwater WLA. The categories are described below.

Process Water WLA

Process Water permits with specific TSS limits and corresponding flow information are assigned to the WLA. In this case, detailed information is available to accurately estimate the WLA. If specific TSS limits are not explicitly stated in the process water permit, then TSS loads are expected to be *de minimis*. If loads are *de minimis*, then they pose little or no risk to the aquatic environment and are not a significant source.



## FINAL

Process Water permits with specific TSS limits include:

- Individual industrial facilities
- Individual municipal facilities
- General mineral mining facilities

There are six process water sources with explicit TSS limits in the Patuxent River Upper watershed, which include five municipal, and one mineral mine discharges. The total estimated TSS load from all of the process water sources is based on current permit limits and is equal to 607.5 ton/yr. As mentioned above, no reductions were applied to this source, since such controls would produce no discernable water quality benefit when nonpoint sources and regulated stormwater sources comprise 97.2% of the sediment loads generated within the Patuxent River Upper watershed. For a detailed list of the six process water sources, including information on their permit limits, please see Appendix B. For information regarding the allocations to individual process water point sources, please see the technical memoranda to this document entitled “*Significant Sediment Point Sources in the Patuxent River Upper Watershed*”.

### Stormwater WLA

Per EPA requirements, “stormwater discharges that are regulated under Phase I or Phase II of the NPDES stormwater program are point sources that must be included in the WLA portion of a TMDL” (US EPA 2002). Phase I and II permits can include the following types of discharges:

- Small, medium, and large MS4s – these can be owned by local jurisdictions, municipalities, and state and federal entities (e.g., departments of transportation, hospitals, military bases),
- Industrial facilities permitted for stormwater discharges, and
- Small and large construction sites.

EPA recognizes that available data and information are usually not detailed enough to determine WLAs for NPDES regulated stormwater discharges on an outfall-specific basis (US EPA 2002). Therefore, NPDES regulated stormwater loads within the Patuxent River Upper watershed will be expressed as a single NPDES stormwater WLA. Upon approval of the TMDL, “NPDES-regulated municipal stormwater and small construction storm water discharges effluent limits should be expressed as BMPs or other similar requirements, rather than as numeric effluent limits” (US EPA 2002).

The Patuxent River Upper NPDES stormwater WLA is based on reductions applied to the sediment load from the urban land use in the watershed and may include legacy or other sediment sources. Some of these sources may also be subject to controls from other management programs. The Patuxent River Upper NPDES stormwater WLA requires an overall reduction of 11.4% (see Table 7).

As stormwater assessment and/or other program monitoring efforts result in a more refined source assessment, MDE reserves the right to revise the current NPDES

## FINAL

stormwater WLA provided the revisions protect aquatic life from sediment related impacts.

For more information on the methods used to calculate the baseline urban sediment load, see Section 2.2.2. For a detailed list of all of the NPDES regulated stormwater discharges within the watershed, please see Appendix B, and for information regarding the NPDES stormwater WLA distribution amongst these discharges, please see the technical memorandum to this document entitled “*Significant Sediment Point Sources in the Patuxent River Upper Watershed*”.

### 4.7 Margin of Safety

All TMDLs must include a MOS to account for any lack of knowledge and uncertainty concerning the relationship between loads and water quality (CFR 2009b). The MOS shall also account for any rounding errors generated in the various calculations used in the development of the TMDL. It is proposed that the estimated variability around the reference watershed group used in this analysis already accounts for such uncertainty. Analysis of the reference group *forest normalized sediment loads* indicates that approximately 75% of the reference watersheds have a value of less than 5.1. Also, 50% of the reference watersheds have a value less than 4.8. Based on this analysis the *forest normalized reference sediment load* (also referred to as the *sediment loading threshold*) was set at the median value of 4.8. This is considered an environmentally conservative estimate, since 50% of the reference watersheds have a load above this value (4.8), which when compared to the 75% value (5.1), results in an implicit MOS of approximately 6%.

### 4.8 Summary of Total Maximum Daily Loads

The average annual Patuxent River Upper watershed TMDL is summarized in Table 8. The TMDL is the sum of the LAs, NPDES Stormwater WLA, Process Water WLA, and MOS. The LAs include nonpoint source loads generated within the Patuxent River Upper watershed and loads from upstream sources. The Maximum Daily Load (MDL) is summarized in Table 9 (See Appendix C for more details).

**Table 8: Patuxent River Upper Watershed Average Annual TMDL of Sediment/TSS (ton/yr)**

TMDL (ton/yr)	LA			WLA		MOS
	LA <sub>LP</sub> <sup>1</sup>	LA <sub>RG</sub> <sup>2</sup>	LA <sub>UP</sub>	NPDES Stormwater WLA <sub>UP</sub>	Process Water WLA <sub>UP</sub>	
56,607.1	31,199.8	5,769.0	10,966.2	8,064.6	607.5	Implicit
	Upstream Load Allocations <sup>3,4</sup>		Patuxent River Upper Watershed TMDL Contribution			

- Notes:**
- <sup>1</sup> For Little Patuxent River watershed WLA and LA characterization, please refer to the “Total Maximum Daily Load of Sediment in the Little Patuxent River Watershed, Howard and Anne Arundel Counties, Maryland” (MDE 2010c).
  - <sup>2</sup> For Rocky Gorge Reservoir WLA and LA characterization, please refer to Appendix D, and for additional information regarding other sources of sediment to the reservoir (i.e., upstream sources) see the “Total Maximum Daily Loads of Phosphorus and Sediments for Triadelphia Reservoir (Brighton Dam) and Total Maximum Daily Loads of Phosphorus for Rocky Gorge Reservoir, Howard, Montgomery, and Prince George’s Counties, Maryland” (MDE 2008b).
  - <sup>3</sup> Although for the purposes of this analysis the upstream loads are referred to as LAs, they could include loads from point and nonpoint sources.
  - <sup>4</sup> A delivery factor of 1 was used for the Upstream LAs.

**Table 9: Patuxent River Upper Maximum Daily Loads of Sediment/TSS (ton/day)**

MDL (ton/day)	LA			WLA		MOS
	LA <sub>LP</sub> <sup>1</sup>	LA <sub>RG</sub> <sup>2</sup>	LA <sub>UP</sub>	NPDES Stormwater WLA <sub>UP</sub>	Process Water WLA <sub>UP</sub>	
2,039.7	1,067.3	225.0	427.7	314.5	5.2	Implicit
	Upstream Load Allocations <sup>3,4</sup>		Patuxent River Upper Watershed TMDL Contribution			

- Notes:**
- <sup>1</sup> For Little Patuxent River watershed WLA and LA MDL characterization, please refer to the “Total Maximum Daily Load of Sediment in the Little Patuxent River Watershed, Howard and Anne Arundel Counties, Maryland” (MDE 2010c).
  - <sup>2</sup> For Rocky Gorge Reservoir WLA and LA MDL characterization, please refer to Appendix D and Appendix C, and for additional information regarding other sources of sediment to the reservoir (i.e., upstream sources) see the “Total Maximum Daily Loads of Phosphorus and Sediments for Triadelphia Reservoir (Brighton Dam) and Total Maximum Daily Loads of Phosphorus for Rocky Gorge Reservoir, Howard, Montgomery, and Prince George’s Counties, Maryland” (MDE 2008b).
  - <sup>3</sup> Although for the purposes of this analysis the upstream MDLs are referred to as LAs, they could include loads from point and nonpoint sources.
  - <sup>4</sup> A delivery factor of 1 was used for the Upstream MDL LAs.

## FINAL

### 5.0 ASSURANCE OF IMPLEMENTATION

This section provides the basis for reasonable assurances that the sediment TMDL will be achieved and maintained. Section 303(d) of the CWA and current EPA regulations require reasonable assurance that the TMDL load and WLAs can and will be implemented (CFR 2009b). Maryland has several well-established programs to draw upon, including the Water Quality Improvement Act of 1998 (WQIA) and the Federal Nonpoint Source Management Program (§ 319 of the Clean Water Act).

Potential funding sources available for local governments for implementation include the Buffer Incentive Program (BIP), the State Water Quality Revolving Loan Fund, and the Stormwater Pollution Cost Share Program. Details of these programs and additional funding sources can be found at <http://www.dnr.state.md.us/bay/services/summaries.html>.

Potential BMPs for reducing sediment loads and resulting impacts can be grouped into two general categories. The first is directed toward agricultural lands, and the second is directed toward urban (developed) lands.

In agricultural areas, comprehensive soil conservation plans can be developed that meet criteria of the NRCS Field Office Technical Guide (USDA 1983). Soil conservation plans help control erosion by modifying cultural practices or structural practices. Cultural practices may change from year to year and include changes to crop rotations, tillage practices, or use of cover crops. Structural practices are long-term measures that include, but are not limited to, the installation of grass waterways (in areas with concentrated flow), terraces, diversions, sediment basins, or drop structures. The reduction percentage attributed to cultural practices is determined based on changes in land use, while structural practices have a reduction percentage up to 25%. In addition, livestock can be controlled via stream fencing and rotational grazing. Sediment reduction efficiencies of methods applicable to pasture land use range from 40% to 75% (US EPA 2004). Lastly, riparian buffers can reduce the effect of agricultural sediment sources through trapping and filtering, and reforestation, whether adjacent to part of the watershed stream system or in a watershed's interior, can decrease agricultural sediment sources as well.

Sediment from urban areas can be reduced by stormwater retrofits that address both water quality and flow control. Examples of these retrofits include the modification of existing stormwater structural practices, the construction of new stormwater BMPs in prior development where there is none, a reduction in impervious surfaces, street sweeping, inlet cleaning, increases in the urban tree canopy, stream restoration, and any other management practice that effectively addresses water quality and flow control (i.e., riparian buffers for urban areas and watershed reforestation adjacent to the watershed stream system or within a watershed's interior). A significant portion of the sediment loading from the urban area within the Patuxent River Upper watershed is attributed to streambank erosion (see section 2.2.1). Therefore, flow controls must be implemented to reduce sheer stress and limit bank erosion in order to address this portion of the urban sediment load. Additionally, impervious surface reduction results in a change in hydrology that could also reduce streambank erosion. In terms of upland urban sediment

## **FINAL**

loads, stormwater retrofit reductions range from as low as 10% for dry detention to approximately 80% for wet ponds, wetlands, infiltration practices, and filtering practices (US EPA 2003). It is anticipated that the implementation of the TMDL will include the array of urban BMPs and practices outlined above. Implementation of the required urban sediment load reductions is expected to occur primarily via the Phase I MS4 permitting process for medium and large municipalities, which requires that these jurisdictions retrofit 10% of their existing impervious area within a permit cycle, or five years (MDE 2009b). These Phase I MS4 jurisdictions should work with other regulated stormwater entities in the watershed (see Appendix B, Table B-5) during the implementation process to achieve the necessary reductions.

It has been estimated that the average TSS removal efficiencies for BMPs installed between the years of 1985-2002 and post 2002, which are reflective of the stormwater management regulations in place during these time periods, is 50% and 80%, respectively (Claytor and Schueler 1997; Baldwin et al. 2007; Baish and Caliri 2009). Based on these average TSS reduction efficiencies, BMP specific reduction efficiencies as estimated by CBP, and best professional judgment, MDE estimates that future stormwater retrofits, which are expected to be implemented as part of the 10% retrofit requirement to existing impervious land every 5 years for all Phase I MS4 jurisdictions (MDE 2009b), will have approximately a 65% reduction efficiency for TSS, which is subject to change over time. Additionally, any new development in the watershed will be subject to Maryland's Stormwater Management Act of 2007 and will be required to use environmental site design (ESD) to the maximum extent practicable.

In summary, through the use of the aforementioned funding mechanisms and best management practices, there is reasonable assurance that this TMDL can be implemented.

## FINAL

## REFERENCES

- Arnold, C. L., and C. J. Gibbons. 1996. Impervious Surface Coverage: The Emergence of a Key Environmental Indicator. *Journal of the American Planning Association* 62 (2): 243-258.
- Baish, A. S., and M. J. Caliri. 2009. *Overall Average Stormwater Effluent Removal Efficiencies for TN, TP, and TSS in Maryland from 1984-2002*. Baltimore, MD: Johns Hopkins University.
- Baldwin, A. H., S. E. Weammert, and T. W. Simpson. 2007. *Pollutant Load Reductions from 1985-2002*. College Park, MD: Mid Atlantic Water Program.
- Claytor, R., and T. R. Schueler. 1997. *Technical Support Document for the State of Maryland Stormwater Design Manual Project*. Baltimore, MD: Maryland Department of the Environment.
- CFR (Code of Federal Regulations). 2009a. 40 CFR 130.2(i). <http://ecfr.gpoaccess.gov/cgi/t/text/text-idx?c=ecfr;sid=43ac087684bf922499af8ffed066cb09;rgn=div5;view=text;node=40%3A21.0.1.1.17;idno=40;cc=ecfr#40:21.0.1.1.17.0.16.3> (Accessed December, 2009).
- \_\_\_\_\_. 2009b. 40 CFR 130.7. <http://a257.g.akamaitech.net/7/257/2422/22jul20061500/edocket.access.gpo.gov/cfr/2006/julqtr/40cfr130.7.htm> (Accessed December, 2009).
- Cochran, W. G. 1977. *Sampling Techniques*. New York: John Wiley and Sons.
- COMAR (Code of Maryland Regulations). 2009a. 26.08.02.02 B(1). <http://www.dsd.state.md.us/comar/> (Accessed December, 2009).
- \_\_\_\_\_. 2009b. 26.08.02.08 M(1). <http://www.dsd.state.md.us/comar/> (Accessed December, 2009).
- \_\_\_\_\_. 2009c. 26.08.02.04. <http://www.dsd.state.md.us/comar/> (Accessed December, 2009).
- Currey, D. L., A. A. Kasko, R. Mandel, and M. J. Brush. 2006. *A Methodology for Addressing Sediment Impairments in Maryland's Non-tidal Watersheds*. Baltimore, MD: Maryland Department of the Environment. Also Available at [http://www.mde.state.md.us/assets/document/Sediment%20TMDL%20Method%20Report\\_20070728.pdf](http://www.mde.state.md.us/assets/document/Sediment%20TMDL%20Method%20Report_20070728.pdf).

## FINAL

DNR (Maryland Department of Natural Resources). 1996. *Maryland Water Quality Inventory, 1993-1995: A report on The Status of Natural Waters in Maryland Required by Section 305(b) of the Federal Water Pollution Control Act and Reported to the US Environmental Protection Agency and Citizens of the State of Maryland*. Annapolis, MD: Department of Natural Resources.

\_\_\_\_\_. 2009. *Physiography of Maryland*.  
<http://www.dnr.state.md.us/forests/healthreport/mdmap.html> (Accessed December, 2009).

Evans, B. M., S. A. Sheeder, and D. W. Lehning. 2003. A Spatial Technique for Estimating Streambank Erosion Based on Watershed Characteristics. *Journal of Spatial Hydrology* 3 (1).

Goetz, S. J., C. A. Jantz, S. D. Prince, A. J. Smith, R. Wright, and D. Varlyguin. 2004. Integrated Analysis of Ecosystem Interactions with Land Use Change: the Chesapeake Bay Watershed. In *Ecosystems and Land Use Change*, edited by R. S. DeFries, G. P. Asner, and R. A. Houghton. Washington, DC: American Geophysical Union.

Klauda, R., P. Kazyak, S. Stranko, M. Southerland, N. Roth, and J. Chaillou. 1998. The Maryland Biological Stream Survey: A State Agency Program to Assess the Impact of Anthropogenic Stresses on Stream Habitat Quality and Biota. *Environmental Monitoring and Assessment* 51: 299-316.

MDE (Maryland Department of the Environment). 2000. *An Overview of Wetlands and Water Resources of Maryland*. Baltimore, MD: Maryland Department of the Environment.

\_\_\_\_\_. 2004. *2004 List of Impaired Surface Waters [303(d) List] and Integrated Assessment of Water Quality in Maryland Submitted in Accordance with Sections 303(d) and 305(b) of the Clean Water Act*. Baltimore, MD: Maryland Department of the Environment. Also Available at  
[http://www.mde.state.md.us/Programs/WaterPrograms/TMDL/Maryland%20303%20dlist/final\\_2004\\_303dlist.asp](http://www.mde.state.md.us/Programs/WaterPrograms/TMDL/Maryland%20303%20dlist/final_2004_303dlist.asp).

\_\_\_\_\_. 2007. *Total Maximum Daily Loads of Sediment/Total Suspended Solids for the Anacostia River Basin, Montgomery and Prince George's Counties, Maryland and the District of Columbia*. Baltimore, MD: Maryland Department of the Environment. Also Available at  
[http://www.mde.state.md.us/assets/document/AnacostiaSed\\_MD-DC\\_TMDL\\_061407\\_final.pdf](http://www.mde.state.md.us/assets/document/AnacostiaSed_MD-DC_TMDL_061407_final.pdf).

## FINAL

- \_\_\_\_\_. 2008a. *The 2008 Integrated Report of Surface Water Quality in Maryland*. Baltimore, MD: Maryland Department of the Environment. Also Available at [http://www.mde.state.md.us/Programs/WaterPrograms/TMDL/Maryland%20303%20dlist/2008\\_Final\\_303d\\_list.asp](http://www.mde.state.md.us/Programs/WaterPrograms/TMDL/Maryland%20303%20dlist/2008_Final_303d_list.asp).
- \_\_\_\_\_. 2008b. *Total Maximum Daily Loads of Phosphorus and Sediments for Triadelphia Reservoir (Brighton Dam) and Total Maximum Daily Loads of Phosphorus for Rocky Gorge Reservoir, Howard, Montgomery, and Prince George's Counties, Maryland*. Baltimore, MD: Maryland Department of the Environment. Also Available at [http://www.mde.state.md.us/Programs/WaterPrograms/TMDL/ApprovedFinalTMDL/TMDL\\_Pax\\_Res\\_P\\_Sed.asp](http://www.mde.state.md.us/Programs/WaterPrograms/TMDL/ApprovedFinalTMDL/TMDL_Pax_Res_P_Sed.asp).
- \_\_\_\_\_. 2009a. *Maryland Biological Stressor Identification Process*. Baltimore, MD: Maryland Department of the Environment.
- \_\_\_\_\_. 2009b. *Maryland's NPDES Municipal Stormwater Permits – Phase I*. [http://www.mde.state.md.us/Programs/WaterPrograms/SedimentandStormwater/sform\\_gen\\_permit.asp](http://www.mde.state.md.us/Programs/WaterPrograms/SedimentandStormwater/sform_gen_permit.asp) (Accessed December, 2009).
- \_\_\_\_\_. 2010a. *Watershed Report for Biological Impairment of the Upper Patuxent River Watershed in Anne Arundel and Howard Counties, Maryland: Biological Stressor Identification Analysis Results and Interpretation*. Baltimore, MD: Maryland Department of the Environment.
- \_\_\_\_\_. 2010b. *Maryland Tier II Dataset*. Baltimore, MD: Maryland Department of the Environment.
- \_\_\_\_\_. 2010c. *Total Maximum Daily Load of Sediment in the Little Patuxent River Watershed, Howard and Anne Arundel Counties, Maryland*. Baltimore, MD: Maryland Department of the Environment.
- \_\_\_\_\_. 2010d. *Water Quality Analysis of Sediment in the Middle Patuxent River, Howard County, MD*. Baltimore, MD: Maryland Department of the Environment.
- MGS (Maryland Geological Survey). 2009. *A Brief Description of the Geology of Maryland*. <http://www.mgs.md.gov/esic/brochures/mdgeology.html> (Accessed December, 2009).
- Nusser, S. M., and J. J. Goebel. 1997. The National Resources Inventory: A Long-Term Multi-Resource Monitoring Program. *Environmental and Ecological Statistics* 4: 181-204.



## FINAL

- Roth, N., M. T. Southerland, J. C. Chaillou, R. Klauda, P. F. Kazyak, S. A. Stranko, S. Weisberg, L. Hall Jr., and R. Morgan II. 1998. Maryland Biological Stream Survey: Development of a Fish Index of Biotic Integrity. *Environmental Management and Assessment* 51: 89-106.
- Roth, N. E., M. T. Southerland, J. C. Chaillou, P. F. Kazyak, and S. A. Stranko. 2000. *Refinement and Validation of a Fish Index of Biotic Integrity for Maryland Streams*. Columbia, MD: Versar, Inc. with Maryland Department of Natural Resources, Monitoring and Non-Tidal Assessment Division.
- Roth, N. E., M. T. Southerland, J. C. Chaillou, G. M. Rogers, and J. H. Volstad. 2005. *Maryland Biological Stream Survey 2000-2004: Volume IV: Ecological Assessment of Watersheds Sampled in 2003*. Columbia, MD: Versar, Inc. with Maryland Department of Natural Resources, Monitoring and Non-Tidal Assessment Division.
- Schueler, T. 1994. The Importance of Imperviousness. *Subwatershed Protection Techniques* 1. Ellicott City, MD: Center for Watershed Protection.
- Stribling, J. B., B. K. Jessup, J. S. White, D. Boward, and M. Hurd. 1998. *Development of a Benthic Index of Biotic Integrity for Maryland Streams*. Owings Mills, MD: Tetra Tech, Inc. with Maryland Department of Natural Resources, Monitoring and Non-Tidal Assessment Program.
- US Census Bureau. 2000. *2000 Census*. Washington, DC: US Census Bureau.
- USDA (United States Department of Agriculture). 1982. *1982 Census of Agriculture*. Washington, DC: United States Department of Agriculture.
- \_\_\_\_\_. 1983. Sediment Sources, Yields, and Delivery Ratios. In *National Engineering Handbook, Section 3, Sedimentation*. Washington, D.C: United States Department of Agriculture, Natural Resources Conservation Service.
- \_\_\_\_\_. 1987. *1987 Census of Agriculture*. Washington, DC: United States Department of Agriculture.
- \_\_\_\_\_. 1992. *1992 Census of Agriculture*. Washington, DC: United States Department of Agriculture.
- \_\_\_\_\_. 1997. *1997 Census of Agriculture*. Washington, DC: United States Department of Agriculture.
- \_\_\_\_\_. 2002. *2002 Census of Agriculture*. Washington, DC: United States Department of Agriculture.

## FINAL

- \_\_\_\_\_. 2006. *State Soil Geographic (STATSGO) Database for Maryland*. Washington, DC: United States Department of Agriculture, Natural Resources Conservation Service. Also Available at <http://www.soils.usda.gov/survey/geography/statsgo/>.
- US EPA (U.S. Environmental Protection Agency). 1991. *Technical Support Document (TSD) for Water Quality-based Toxics Control*. Washington, DC: U.S. Environmental Protection Agency. Also Available at <http://www.epa.gov/npdes/pubs/owm0264.pdf>.
- \_\_\_\_\_. 2002. *Establishing Total Maximum Daily Load (TMDL) Wasteload Allocations (WLAs) for Storm Water Sources and NPDES Permit Requirements Based on Those WLAs*. Washington, DC: U.S. Environmental Protection Agency.
- \_\_\_\_\_. 2003. *Stormwater Best Management Practice Categories and Pollutant Removal Efficiencies*. Annapolis, MD: U.S. Environmental Protection Agency with Chesapeake Bay Program.
- \_\_\_\_\_. 2004. *Agricultural BMP Descriptions as Defined for the Chesapeake Bay Program Watershed Model*. Annapolis, MD: U.S. Environmental Protection Agency with Chesapeake Bay Program.
- \_\_\_\_\_. 2007. *Options for the Expression of Daily Loads in TMDLs (DRAFT 6/22/07)*. Washington, D.C: U.S. Environmental Protection Agency, Office of Wetlands, Oceans & Watersheds. Also Available at [www.epa.gov/owow/tmdl/draft\\_daily\\_loads\\_tech.pdf](http://www.epa.gov/owow/tmdl/draft_daily_loads_tech.pdf).
- \_\_\_\_\_. 2009. *Chesapeake Bay Phase V Community Watershed Model*. Annapolis, MD: U.S. Environmental Protection Agency with Chesapeake Bay Program. Also available at: [http://www.chesapeakebay.net/model\\_phase5.aspx?menuitem=26169](http://www.chesapeakebay.net/model_phase5.aspx?menuitem=26169)

## APPENDIX A – Watershed Characterization Data

Table A-1: Coastal Plain Reference Watersheds

MD 8-digit Name	MD 8-digit	Percent stream mile BIBI/FIBI < 3.0 (%) <sup>1,2</sup>	Forest Normalized Sediment Load <sup>3</sup>
Breton Bay	02140104	14	4.04
St. Clements Bay	02140105	15	5.11
Wicomico River	02140106	17	5.36
Gilbert Swamp	02140107	14	4.89
Zekiah Swamp	02140108	15	4.70
Nanjemoy Creek	02140110	20	2.52
<b>Median</b>			<b>4.8</b>
<b>75th</b>			<b>5.1</b>

**Notes:** <sup>1</sup>Based on the percentage of MBSS stations with BIBI and/or FIBI scores significantly lower than 3.0 within the MD 8-digit watershed (MDE 2008a).

<sup>2</sup>The percent stream miles with BIBI and/or FIBI scores significantly lower than 3.0 threshold to determine if an 8-digit watershed is impaired for impacts to biological communities is based on a comparison to reference conditions (MDE 2008a).

<sup>3</sup>Forest normalized sediment loads based on Maryland watershed area only (consistent with MBSS random monitoring data).

## APPENDIX B – MDE Permit Information

Table B-1: Permit Summary

MDE Permit #	NPDES #	Facility	City	County	Type	TMDL
02DP2831	MD0065358	NATIONAL WILDLIFE VISITOR CENTER	LAUREL	PRINCE GEORGES	WMA2	Process Water WLA
02DP2539B	MD0025631	U.S. AIR FORCE - DAVIDSONVILLE TRANSMITTER SITE	GAMBRILLS	ANNE ARUNDEL	WMA2	Process Water WLA
99DP2393	MD0062596	ANNE ARUNDEL COUNTY - MARYLAND CITY WATER RECLAMATION FACILITY	LAUREL	ANNE ARUNDEL	WMA2M	Process Water WLA
05DP0697	MD0021628	BOWIE CITY OF - WWTP <sup>2</sup>	BOWIE	PRINCE GEORGES	WMA2M	Process Water WLA
02DP0631	MD0021725	WSSC - PARKWAY WWTP	LAUREL	PRINCE GEORGES	WMA2M	Process Water WLA
00MM9716	MDG499716	CHANEY ENTERPRISES - CROFTON CONCRETE PLANT	ODENTON	ANNE ARUNDEL	WMA5	Process Water WLA
02SW0761		ANNE ARUNDEL COUNTY - MARYLAND CITY WATER RECLAMATION FACILITY	LAUREL	ANNE ARUNDEL	WMA5SW	Stormwater WLA
02SW1120		B & B AUTO SALVAGE, LTD.	UPPER MARLBORO	PRINCE GEORGES	WMA5SW	Stormwater WLA
02SW0859		UNITED PARCEL SERVICE - BURTONSVILLE	LAUREL	PRINCE GEORGES	WMA5SW	Stormwater WLA
02SW0857		UNITED PARCEL SERVICE - REMOTE SHOP	LAUREL	PRINCE GEORGES	WMA5SW	Stormwater WLA
02SW1049		FEDERAL EXPRESS - CROFTON	CROFTON	ANNE ARUNDEL	WMA5SW	Stormwater WLA
02SW0882		WASHINGTON WILBERT VAULT WORKS	LAUREL	HOWARD	WMA5SW	Stormwater WLA
02SW0314		SANDY HILL MUNICIPAL LANDFILL	BOWIE	PRINCE GEORGES	WMA5SW	Stormwater WLA
02SW0118		WSSC - PARKWAY WWTP	LAUREL	PRINCE GEORGES	WMA5SW	Stormwater WLA
02SW0846		BOWIE USED AUTO PARTS, INC.	BOWIE	PRINCE	WMA5SW	Stormwater WLA

**FINAL**

<b>MDE Permit #</b>	<b>NPDES #</b>	<b>Facility</b>	<b>City</b>	<b>County</b>	<b>Type</b>	<b>TMDL</b>
				GEORGES		
02SW0841		CENTRAL SMALL CAR SALVAGE	UPPER MARLBORO	PRINCE GEORGES	WMA5SW	Stormwater WLA
02SW1738		WSSC - LAUREL GARAGE	LAUREL	PRINCE GEORGES	WMA5SW	Stormwater WLA
02SW1324		SHA - LAUREL SHOP	LAUREL	PRINCE GEORGES	WMA5SW	Stormwater WLA
02SW0511		THE BECHDON COMPANY, INC.	UPPER MARLBORO	PRINCE GEORGES	WMA5SW	Stormwater WLA
02SW0951		BALCON	ODENTON	ANNE ARUNDEL	WMA5SW	Stormwater WLA
02SW2089		FIRST TRANSIT, INC. #5315	LAUREL	PRINCE GEORGES	WMA5SW	Stormwater WLA
03-IM-5500-029	MDR055500	CITY OF BOWIE MS4	BOWIE	PRINCE GEORGES	WMA6G	Stormwater WLA
03-IM-5500-034	MDR055500	CITY OF LAUREL MS4	LAUREL	PRINCE GEORGES	WMA6G	Stormwater WLA
04DP3316	MD0068306	ANNE ARUNDEL COUNTY MS4	COUNTY WIDE	ANNE ARUNDEL	WMA6	Stormwater WLA
05DP3318	MD0068322	HOWARD COUNTY MS4	COUNTY WIDE	HOWARD	WMA6	Stormwater WLA
99DP3314	MD0068284	PRINCE GEORGE'S COUNTY MS4	COUNTY WIDE	PRINCE GEORGES	WMA6	Stormwater WLA
99DP3313	MD0068276	STATE HIGHWAY ADMINSTRATION MS4	STATE-WIDE	ALL PHASE I	WMA6	Stormwater WLA
		MDE GENERAL PERMIT TO CONSTRUCT	ALL	ALL		Stormwater WLA

**Notes:** <sup>1</sup>TMDL column identifies how the permit was considered in the TMDL allocation.

<sup>2</sup>WWTP = Wastewater Treatment Plant.

**FINAL**

**Table B-2: Individual Municipal Permit Data**

<b>Facility Name</b>	<b>MDE Permit #</b>	<b>NPDES #</b>	<b>Flow (MGD)<sup>1</sup></b>	<b>Permit Avg. Monthly Conc. (mg/l)<sup>2</sup></b>	<b>Permit Weekly Avg. Conc. (mg/l)<sup>2</sup></b>
NATIONAL WILDLIFE VISITOR CENTER	02DP2831	MD0065358	0.0067	30	45
U.S. AIR FORCE - DAVIDSONVILLE TRANSMITTER SITE	02DP2539B	MD0025631	0.01	30	45
ANNE ARUNDEL COUNTY - MARYLAND CITY WATER RECLAMATION FACILITY	99DP2393	MD0062596	2.5	30	45
BOWIE CITY OF - WWTP	05DP0697	MD0021628	3.3	30	45
WSSC - PARKWAY WWTP	02DP0631	MD0021725	7.5	30	45

Notes: <sup>1</sup>MGD = Millions of Gallons per Day.

<sup>2</sup>mg/l = Milligrams per liter.

**Table B-3: General Mine Permit Data**

<b>Facility Name</b>	<b>MDE Permit #</b>	<b>NPDES #</b>	<b>Flow (MGD)</b>	<b>Permit Avg. Monthly Conc. (mg/l)</b>	<b>Permit Daily Max. Conc. (mg/l)</b>
CHANEY ENTERPRISES - CROFTON CONCRETE PLANT	00MM9716	MDG499716	0.005	30	60

Table B-5: Stormwater Permits<sup>1</sup>

<b>MDE Permit #</b>	<b>Facility</b>	<b>NPDES Group</b>
02SW0761	ANNE ARUNDEL COUNTY - MARYLAND CITY WATER RECLAMATION FACILITY	Phase 1
02SW1120	B & B AUTO SALVAGE, LTD.	Phase 1
02SW0859	UNITED PARCEL SERVICE - BURTONSVILLE	Phase 1
02SW0857	UNITED PARCEL SERVICE - REMOTE SHOP	Phase 1
02SW1049	FEDERAL EXPRESS - CROFTON	Phase 1
02SW0882	WASHINGTON WILBERT VAULT WORKS	Phase 1
02SW0314	SANDY HILL MUNICIPAL LANDFILL	Phase 1
02SW0118	WSSC - PARKWAY WASTEWATER TREATMENT PLANT	Phase 1
02SW0846	BOWIE USED AUTO PARTS, INC.	Phase 1
02SW0841	CENTRAL SMALL CAR SALVAGE	Phase 1
02SW1738	WSSC - LAUREL GARAGE	Phase 1
02SW1324	SHA - LAUREL SHOP	Phase 1
02SW0511	THE BECHDON COMPANY, INC.	Phase 1
02SW0951	BALCON	Phase 1
02SW2089	FIRST TRANSIT, INC. #5315	Phase 1
03-IM-5500-029	CITY OF BOWIE MS4	Phase 2
03-IM-5500-034	CITY OF LAUREL MS4	Phase 2
04DP3316	ANNE ARUNDEL COUNTY MS4	Phase 1
05DP3318	HOWARD COUNTY MS4	Phase 1
99DP3314	PRINCE GEORGE'S COUNTY MS4	Phase 1

**FINAL**

99DP3313	STATE HIGHWAY ADMINISTRATION MS4	Phase 1
	MDE GENERAL PERMIT TO CONSTRUCT	Phase 1/2

**Notes:** <sup>1</sup> Although not listed in this table, some individual process water permits incorporate stormwater requirements and are accounted for within the NPDES stormwater WLA (specifically the “Other” Regulated Stormwater Allocation in the Technical Memorandum *Significant Sediment Point Sources in the Patuxent River Upper Watershed* accompanying this TMDL report) as well additional Phase II permitted MS4s, such as military bases, hospitals, etc.



## FINAL

### APPENDIX C – Technical Approach Used to Generate Maximum Daily Loads

#### Summary

This appendix documents the technical approach used to define MDLs of sediment consistent with the average annual TMDL in the Patuxent River Upper watershed, which is considered the maximum allowable load the watershed can sustain and support aquatic life. The approach builds upon the modeling analysis that was conducted to determine the sediment loadings and can be summarized as follows.

- The approach defines MDLs for each of the source categories.
- The approach builds upon the TMDL modeling analysis that was conducted to ensure that average annual loading targets are at a level to support aquatic life.
- The approach converts daily time-series loadings into TMDL values in a manner that is consistent with available EPA guidance on generating daily loads for TMDLs (US EPA 2007).
- The approach considers a daily load level of a resolution based on the specific data that exists for each source category.

#### Introduction

This appendix documents the development and application of the approach used to define MDL values. It is divided into sections discussing:

- Basis for approach
- Options considered
- Selected approach
- Results of approach

#### Basis for approach

The overall approach for the development of daily loads was based upon the following factors:

- **Average Annual TMDL:** The basis of the average annual sediment TMDL is that cumulative high sediment loading rates have negative impacts on the biological community. Thus, the average annual sediment load was calculated so as to ensure the support of aquatic life.
- **CBP P5 Watershed Model Sediment Loads:** There are two spatial calibration points for sediment within the CBP P5.2 watershed model framework. First, EOS loads are calibrated to long term EOS target loads. These target loads are the loads used to determine an average annual TMDL, as actual CBP P5.2 calibration and scenario runs were not available upon development of the nontidal sediment TMDL methodology (Currey et al. 2006). Since the EOS target loads applied in the TMDL remained relatively unchanged during the final calibration stages of

## FINAL

the CBP P5.2 model, they are consistent with the final CBP P5.2 sediment loading estimates. The CBP P5.2 model river segments were calibrated to daily monitoring information for watersheds with a flow greater than 100 cubic feet per second (cfs), or an approximate area of 100 square miles.

- **Draft EPA guidance document entitled “Developing Daily Loads for Load-based TMDLs”:** This guidance document provides options for defining MDLs when using TMDL approaches that generate daily output (US EPA 2007).

The rationale for developing TMDLs expressed as *daily* loads was to accept the existing average annual TMDL, but then develop a method for converting this number to a MDL – in a manner consistent with EPA guidance and available information.

### Options considered

The draft EPA guidance document for developing daily loads does not specify a single approach that must be adhered to, but rather it contains a range of acceptable options (US EPA 2007). The selection of a specific method for translating a time-series of allowable loads into the expression of a TMDL requires decisions regarding both the level of resolution (e.g., single daily load for all conditions vs. loads that vary with environmental conditions) and level of probability associated with the TMDL.

This section describes the range of options that were considered when developing methods to calculate Patuxent River Upper Maximum Daily Loads.

#### Level of Resolution

The level of resolution pertains to the amount of detail used in specifying the MDL. The draft EPA guidance document on daily loads provides three categories of options for level of resolution, all of which are potentially applicable for the Patuxent River Upper watershed:

1. **Representative daily load:** In this option, a single daily load (or multiple representative daily loads) is specified that covers all time periods and environmental conditions.
2. **Flow-variable daily load:** This option allows the maximum daily load to vary based upon the observed flow condition.
3. **Temporally-variable daily load:** This option allows the maximum daily load to vary based upon seasons or times of varying source or water body behavior (US EPA 2007).

#### Probability Level

All TMDLs have some probability of being exceeded, with the specific probability being either explicitly specified or implicitly assumed. This level of probability directly or indirectly reflects two separate phenomena:

## FINAL

1. Water quality criteria consist of components describing acceptable magnitude, duration, and frequency. The frequency component addresses how often conditions can allowably surpass the combined magnitude and duration components.
2. Pollutant loads, especially from wet weather sources, typically exhibit a large degree of variability over time. It is rarely practical to specify a “never to be exceeded value” for a daily load, as essentially any loading value has some finite probability of being exceeded.

The draft daily load guidance document states that the probability component of the MDL should be “based on a representative statistical measure” that is dependent upon the specific TMDL and the best professional judgment of the developers (US EPA 2007). This statistical measure represents how often the MDL is expected/allowed to be exceeded. The primary options for selecting this level of protection would be:

1. **The maximum daily load reflects some central tendency:** In this option, the MDL is based upon the mean or median value of the range of loads expected to occur. The variability in the actual loads is not addressed.
2. **The maximum daily load reflects a level of protection implicitly provided by the selection of some “critical” period:** In this option, the MDL is based upon the allowable load that is predicted to occur during some critical period examined during the analysis. The developer does not explicitly specify the probability of occurrence.
3. **The maximum daily load is a value that will be exceeded with a pre-defined probability:** In this option, a “reasonable” upper bound percentile is selected for the MDL based upon a characterization of the variability of daily loads. For example, selection of the 95<sup>th</sup> percentile value would result in a MDL that would be exceeded 5% of the time.

## Selected Approach

The approach selected for defining a Patuxent River Upper MDL was based upon the specific data that exists for each source category. The approach consists of unique methods for each of the following categories of sources:

- Approach for Nonpoint Sources and Stormwater Point Sources within the Patuxent River Upper watershed
- Approach for Process Water Point Sources within the Patuxent River Upper watershed
- Approach for Upstream Sources

### Approach for Nonpoint Sources and Stormwater Point Sources within the Patuxent River Upper watershed

The level of resolution selected for the Patuxent River Upper MDL was a representative daily load, expressed as a single daily load for each loading source. This approach was

## FINAL

chosen based upon the specific data that exists for nonpoint sources and stormwater point sources within the Patuxent River Upper watershed. Currently, the best available data is the CBP P5.2 model daily time series calibrated to long-term average annual loads (per landuse). The CBP reach simulation results are calibrated to daily monitoring information for watershed segments with a flow typically greater than 100 cubic feet per second, but these model calibration runs were not available upon development of the average annual nontidal sediment TMDL methodology (Currey et al. 2006). Therefore, to be consistent with the average annual TMDL, it was concluded that it would not be appropriate to apply the absolute values of the reach simulation model, daily time series results to calculate the MDL. Thus, the annual loads were used instead. However, it was assumed that the distribution of the daily values was correct, in order to calculate a normalized statistical parameter to estimate the MDLs.

The MDL was estimated based on three factors: a specified probability level, the average annual sediment TMDL, and the coefficient of variation (CV) of the CBP P5.2 Patuxent River Upper reach simulation daily loads. The probability level (or exceedance frequency) is based upon guidance from EPA (US EPA 1991) where examples suggest that when converting from a long-term average to a daily value, the z-score corresponding to the 99<sup>th</sup> percentile of the log-normal probability distribution should be used. The average annual sediment TMDL is estimated from the CBP P5.2 EOS target loads. The calculation of the CV is described below.

The CBP P5.2 Patuxent River Upper reach simulation consisted of a daily time series beginning in 1985 and extending to the year 2005. The CV was estimated by first converting the daily sediment load values to a log distribution and then verifying that the results approximated the normal distribution (see Figure C-1). Next, the CV was calculated using the arithmetic mean and standard deviation results from the log transformation. The log-transformed values were used to reduce the possible influence of outliers. The resulting CV of 8.4 was calculated using the following equation:

$$CV = \frac{\beta}{\alpha} \quad \text{(Equation C.1)}$$

where:

CV = coefficient of variation

$$\beta = \alpha \sqrt{e^{\sigma^2} - 1}$$

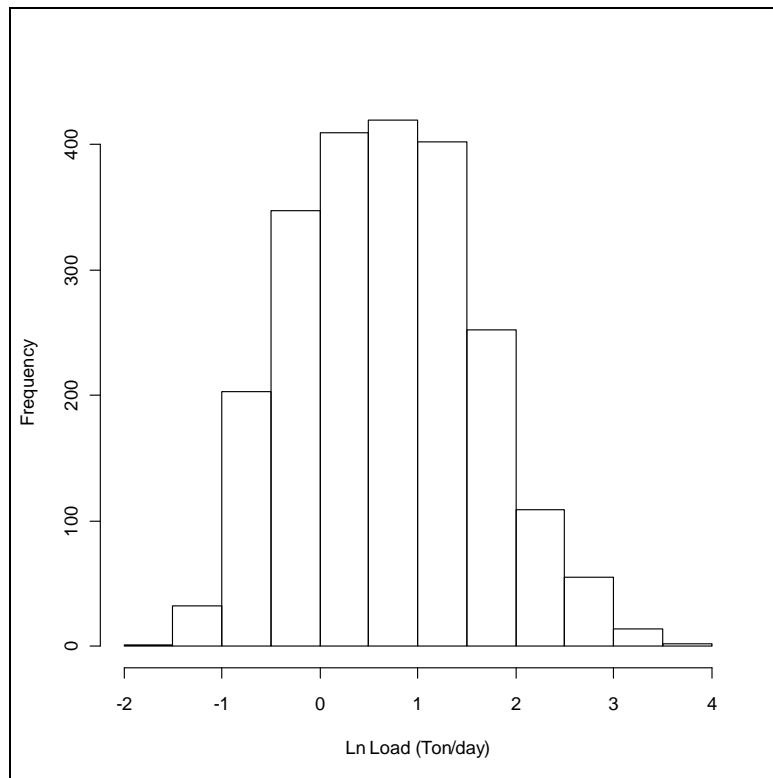
$$\alpha = e^{(\mu + 0.5\sigma^2)}$$

$\alpha$  = mean (arithmetic)

$\beta$  = standard deviation (arithmetic)

$\mu$  = mean of logarithms

$\sigma$  = standard deviation of logarithms



**Figure C-1: Histogram of CBP River Segment Daily Simulation Results for the Patuxent River Upper Watershed**

The maximum “daily” load for each contributing source is estimated as the long-term average annual load multiplied by a factor that accounts for expected variability of daily loading values. The equation is as follows:

$$MDL = LTA * e^{(z\sigma - 0.5\sigma^2)} \quad \text{(Equation C.2)}$$

where:

MDL = Maximum daily load

LTA = Long term average (average annual load)

Z = z-score associated with target probability level

$\sigma^2 = \ln(CV^2 + 1)$

CV = Coefficient of variation based on arithmetic mean and standard deviation

Using a z-score associated with the 99<sup>th</sup> percent probability, a CV of 8.4, and consistent units, the resulting dimensionless conversion factor from long term average annual loads to a MDL is 14.1. The average annual Patuxent River Upper TMDL of sediment/TSS is reported in ton/yr, and the conversion from ton/yr to a MDL in ton/day is 0.039 (e.g. 14.1/365).

## FINAL

### Approach for Process Water Point Sources within the Patuxent River Upper watershed

The TMDL also considers contributions from other point sources (i.e., sources other than stormwater point sources) in the watershed that have NPDES permits with sediment limits. As these sources are generally minor contributors to the overall sediment load, the TMDL analysis that defined the average annual TMDL did not propose any reductions for these sources and held each of them constant at their existing technology-based NPDES permit monthly (or daily if monthly was not specified) limit for the entire year.

The approach used to determine MDLs for these sources was dependent upon whether a maximum daily limit was specified within the permit. If a maximum daily limit was specified, then the reported average flow was multiplied by the daily maximum limit to obtain a MDL. If a maximum daily limit was not specified, the MDLs were calculated based on the guidance provided in the Technical Support Document (TSD) for Water Quality-based Toxics Control (US EPA 1991). The long-term average annual TMDL was converted to maximum daily limits using Table 5-2 of the TSD assuming a coefficient of variation of 0.6 and a 99<sup>th</sup> percentile probability. This results in a dimensionless multiplication factor of 3.11. The average annual Patuxent River Upper TMDL of sediment/TSS is reported in ton/yr, and the conversion from ton/yr to a MDL in ton/day is 0.0085 (e.g. 3.11/365).

### Approach for Upstream Sources

For the purposes of this analysis, two upstream watersheds have been identified: 1) the Little Patuxent River watershed and 2) the Rocky Gorge Reservoir watershed. The MDL for the Little Patuxent River watershed is calculated within the Sediment TMDL for the Little Patuxent River (MDE 2010c). The MDL for the Rocky Gorge Reservoir is estimated based on the same methodology applied for nonpoint sources and stormwater point sources within the Patuxent River Upper watershed.

## Results of approach

This section lists the results of the selected approach to define the Patuxent River Upper MDLs.

- Calculation Approach for Nonpoint Sources and Stormwater Point Sources within the Patuxent River Upper watershed

$$LA_{UP} \text{ (Ton/day)} = \text{Average Annual TMDL } LA_{UP} \text{ (ton/yr)} * 0.039$$

$$\text{Stormwater } WLA_{UP} \text{ (Ton/day)} = \text{Average Annual TMDL Stormwater } WLA_{UP} \text{ (ton/yr)} * 0.039$$

- Calculation Approach for Process Water Point Sources within the Patuxent River Upper watershed

- For permits with a daily maximum limit:

$$\text{Process Water } WLA_{UP} \text{ (ton/day)} = \text{Permit flow (mgd)} * \text{Daily maximum permit limit (mg/l)} * 0.0042, \text{ where } 0.0042 \text{ is a combined factor required to convert units to ton/day}$$

- For permits without a daily maximum limit:

**FINAL**

Process Water WLA<sub>UP</sub> (Ton/day) = Average Annual TMDL WLA<sub>UP</sub> Other (ton/yr)\* 0.0085, where 0.0085 is the factor required to convert units to ton/day

- Calculation Approach for Upstream Sources
  - For Rocky Gorge Reservoir Upstream Sources  
LARG (ton/day) = Average Annual TMDL LARG (ton/yr) \* 0.039
  - For Little Patuxent River Upstream Sources

For Little Patuxent River MDL calculations please refer to the “Total Maximum Daily Load of Sediment in the Little Patuxent River Watershed, Howard and Anne Arundel Counties, Maryland” (MDE 2010c).

**Table C-1: Patuxent River Upper Maximum Daily Loads of Sediment/TSS (ton/day)**

MDL (ton/day)	LA			WLA		MOS
	LA <sub>LP</sub> <sup>1</sup>	LA <sub>RG</sub> <sup>2</sup>	LA <sub>UP</sub>	NPDES Stormwater WLA <sub>UP</sub>	Process Water WLA <sub>UP</sub>	
2,039.7	= 1,067.3	+ 225.0	+ 427.7	+ 314.5	+ 5.2	+ Implicit
	Upstream Load Allocations <sup>3,4</sup>		Patuxent River Upper Watershed MDL Contribution			

- Notes:**
- <sup>1</sup> For Little Patuxent River watershed WLA and LA MDL characterization, please refer to the “Total Maximum Daily Load of Sediment in the Little Patuxent River Watershed, Howard and Anne Arundel Counties, Maryland” (MDE 2010c).
  - <sup>2</sup> For Rocky Gorge Reservoir WLA and LA MDL characterization, please refer to Appendix D and for additional information regarding other sources of sediment to the reservoir (i.e., upstream sources) see the “Total Maximum Daily Loads of Phosphorus and Sediments for Triadelphia Reservoir (Brighton Dam) and Total Maximum Daily Loads of Phosphorus for Rocky Gorge Reservoir, Howard, Montgomery, and Prince George’s Counties, Maryland” (MDE 2008b).
  - <sup>3</sup> Although for the purposes of this analysis the upstream MDLs are referred to as LAs, they could include loads from point and nonpoint sources.
  - <sup>4</sup> A delivery factor of 1 was used for the Upstream MDL LAs.

## **FINAL**

### **APPENDIX D – Sediment TMDLs for the MD 8-Digit Middle Patuxent River, Little Patuxent River, and Upper Patuxent River Watersheds**

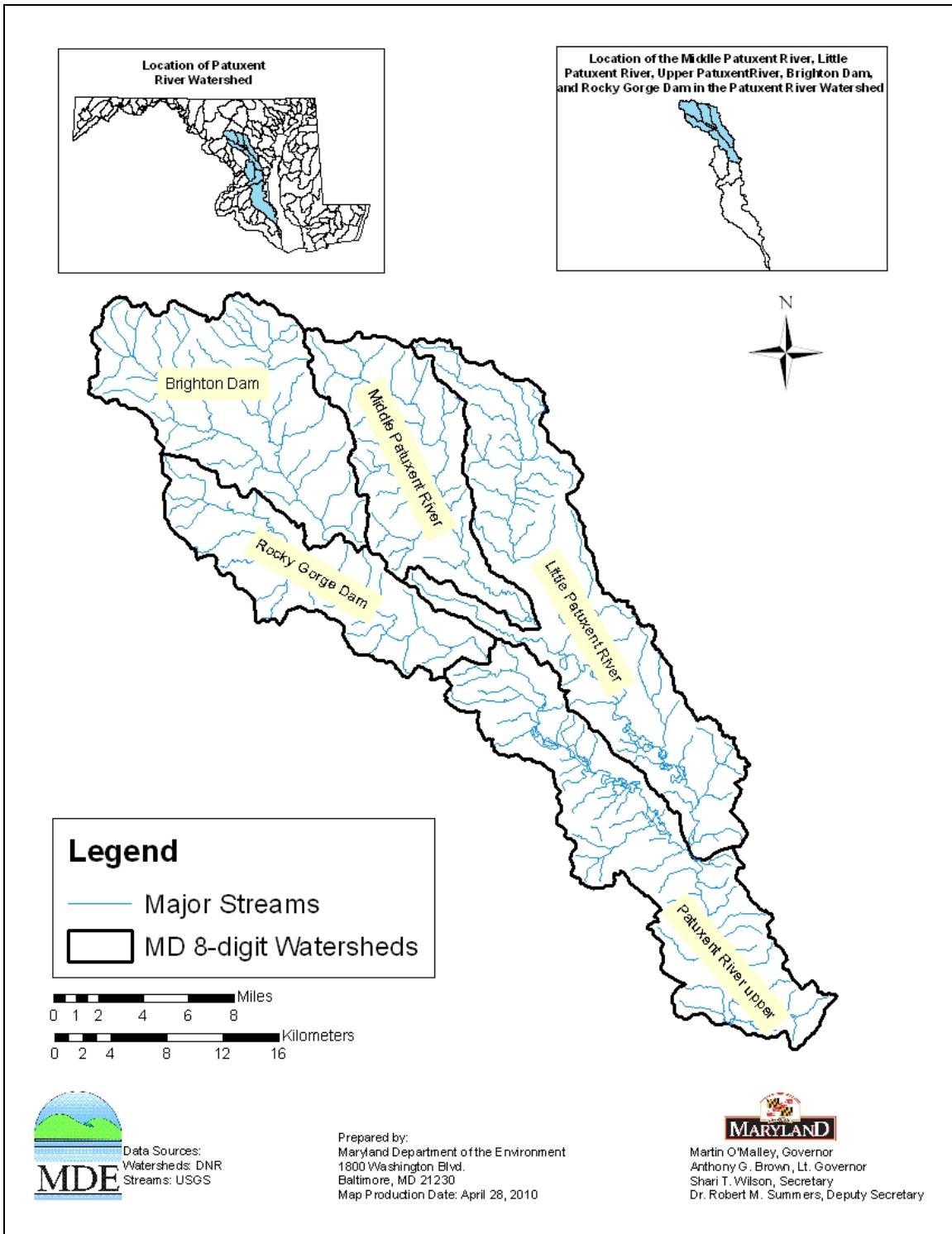
#### **INTRODUCTION**

The purpose of this appendix is to explain the hydrologic relationship between the MD 8-Digit Middle Patuxent River, Little Patuxent River, Patuxent River Upper, Triadelphia Reservoir, and Rocky Gorge Reservoir Watersheds and how this affects the sediment baseline loads and TMDLs, if applicable, for each of the respective watersheds. As illustrated in Figure D-1, the five watersheds are hydrologically connected, beginning upstream with the Middle Patuxent River watershed in the northeast and the Triadelphia Reservoir watershed in the northwest. The Middle Patuxent River watershed flows into the Little Patuxent River watershed, just south of I-95. The combined flow from the Middle Patuxent River watershed and the Little Patuxent River watershed flows into the Patuxent River Upper watershed. Also, the Triadelphia Reservoir discharges to the Rocky Gorge Reservoir, which in turn discharges to the Patuxent River Upper watershed. The hydrologic connectivity of the watersheds is illustrated in Figures D-2 and D-3.

A sediment WQA, in which the baseline sediment loadings were estimated, has been developed for the Middle Patuxent River watershed, and sediment baseline loadings have been estimated, and subsequent TMDLs developed, for the Little Patuxent River watershed, Triadelphia Reservoir, and Patuxent River Upper watershed. Additionally, for the Rocky Gorge Reservoir, the baseline sediment loadings and the subsequent reduction in sediment loadings, expected to result from the implementation of the Phosphorus TMDL for the reservoir, have been estimated for the purpose of this analysis (see Section D-4).

The baseline sediment loads for the watersheds are shown in Tables D-1 through D-3. The TMDL calculations are shown in Tables D-4 through D-5. Further information can be found in the individual TMDL/WQA documents for each watershed.





**Figure D-1: Location of the Middle Patuxent River, Little Patuxent River, Triadelphia Reservoir, Rocky Gorge Reservoir, and Patuxent River Upper Watersheds**

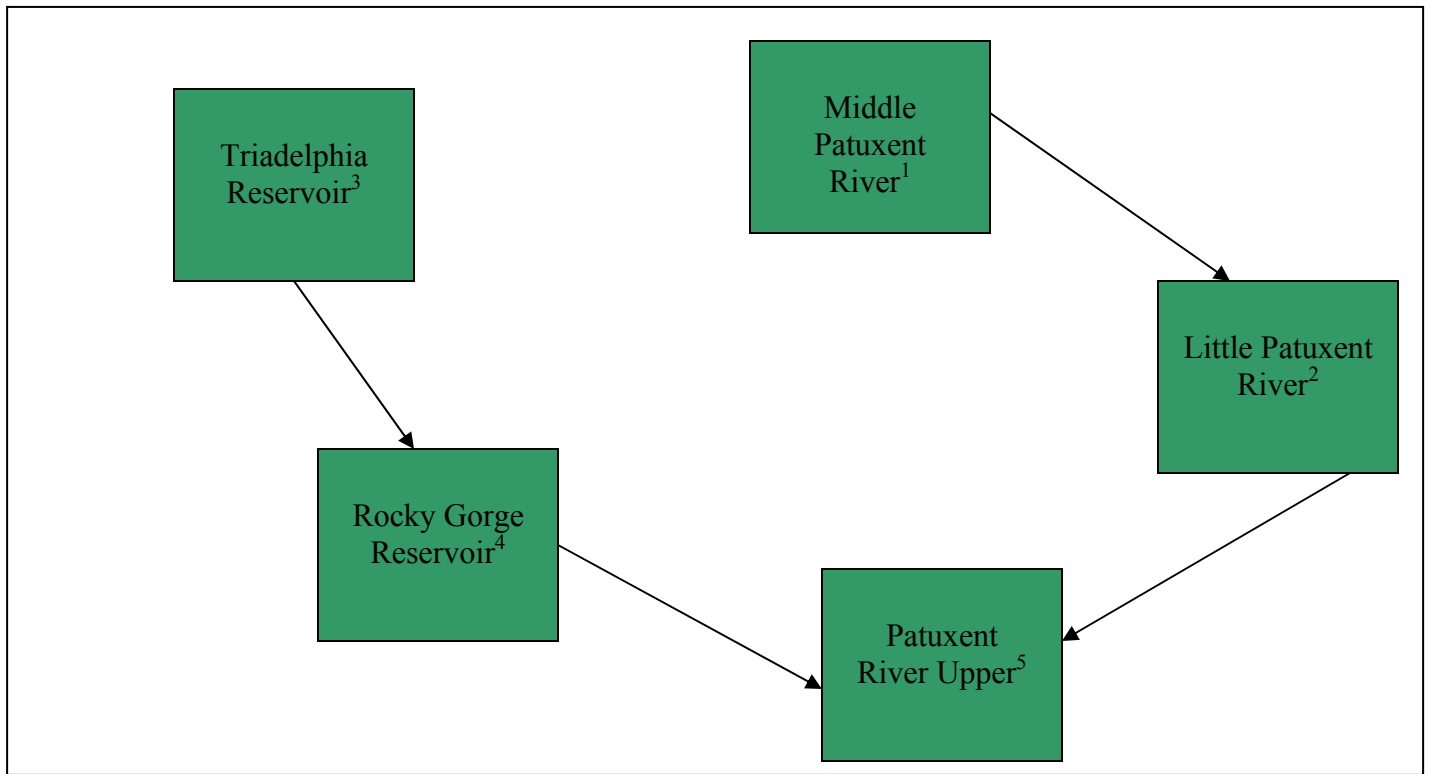


Data Sources:  
 Watersheds: DNR  
 Streams: USGS

Prepared by:  
 Maryland Department of the Environment  
 1600 Washington Blvd.  
 Baltimore, MD 21230  
 Map Production Date: April 28, 2010



Martin O'Malley, Governor  
 Anthony G. Brown, Lt. Governor  
 Shari T. Wilson, Secretary  
 Dr. Robert M. Summers, Deputy Secretary



**Figure D-2: Flow Schematic of the Middle Patuxent River, Little Patuxent River, Triadelphia Reservoir, Rocky Gorge Reservoir, and Patuxent River Upper Watersheds**

- Notes:**
- <sup>1</sup> A sediment WQA is being developed for the Middle Patuxent River watershed. For more information, please refer to the “Water Quality Analysis of Sediment in the Middle Patuxent River Watershed, Howard and Anne Arundel Counties, Maryland” (MDE 2010d).
  - <sup>2</sup> A sediment TMDL is being developed for the Little Patuxent River watershed. For more information, please refer to the “Total Maximum Daily Load of Sediment in the Little Patuxent River Watershed, Howard and Anne Arundel Counties, Maryland” (MDE 2010c).
  - <sup>3</sup> A sediment TMDL has been developed for the Triadelphia Reservoir. For more information, please refer to the “Total Maximum Daily Loads of Phosphorus and Sediments for Triadelphia Reservoir (Brighton Dam) and Total Maximum Daily Loads of Phosphorus for Rocky Gorge Reservoir, Howard, Montgomery, and Prince George’s Counties, Maryland” (MDE 2008b).
  - <sup>4</sup> A Phosphorus TMDL only has been developed for the Rocky Gorge Reservoir. The baseline sediment load and the sediment load anticipated to result from the full implementation of the Phosphorus TMDL have been calculated within this appendix. For more information regarding the Phosphorus TMDL, please refer to the “Total Maximum Daily Loads of Phosphorus and Sediments for Triadelphia Reservoir (Brighton Dam) and Total Maximum Daily Loads of Phosphorus for Rocky Gorge Reservoir, Howard, Montgomery, and Prince George’s Counties, Maryland” (MDE 2008b).
  - <sup>5</sup> A sediment TMDL is being developed for the Patuxent River Upper watershed, as per this document.

**FINAL**

**BASELINE LOADS**

**Table D-1: Middle Patuxent Baseline Sediment Loads (ton/yr)**

<b>Total Baseline Load (ton/yr)<sup>1</sup></b>
11,899.1

**Notes:** <sup>1</sup> For the Middle Patuxent River watershed point and nonpoint source characterization, please refer to the “Water Quality Analysis of Sediment in the Middle Patuxent River Watershed, Howard and Anne Arundel Counties, Maryland” (MDE 2010d).

**Table D-2: Little Patuxent River Baseline Sediment Loads (ton/yr)**

Total Baseline Load (ton/yr)	=	Upstream Baseline Load <sup>1</sup>				Little Patuxent River Watershed Baseline Load Contribution		
		BL <sub>MP</sub> <sup>2</sup>	+	Nonpoint Source BL <sub>LP</sub>	+	NPDES Stormwater BL <sub>LP</sub>	+	Process Water BL <sub>LP</sub>
37.066.5	=	11,899.1	+	6,042.1	+	17,092.5	+	2,032.8

**Notes:** <sup>1</sup> Although the Upstream Baseline Load is reported here as a single value, it could include point and nonpoint sources.

<sup>2</sup> For the Middle Patuxent River watershed point and nonpoint source characterization, please refer to the “Water Quality Analysis of Sediment in the Middle Patuxent River Watershed, Howard County, Maryland” (MDE 2010d).

**Table D-3: Patuxent River Upper Baseline Sediment Loads (ton/yr)**

Total Baseline Load (ton/yr)	=	Upstream Baseline Load <sup>1</sup>			Patuxent River Upper Watershed Baseline Load Contribution					
		BL <sub>LP</sub> <sup>2</sup>	+	BL <sub>RG</sub> <sup>3</sup>	+	Nonpoint Source BL <sub>UP</sub>	+	NPDES Stormwater BL <sub>UP</sub>	+	Process Water BL <sub>UP</sub>
66,421.1	=	37.066.5	+	7,689.0	+	11,956.1	+	9,102.0	+	607.5

**Notes:** <sup>1</sup> Although the Upstream Baseline Loads are reported here as single values, they could include point and nonpoint sources.

<sup>2</sup> For the Little Patuxent River watershed point and nonpoint source characterization, please refer to the “Total Maximum Daily Load of Sediment in the Little Patuxent River Watershed, Howard and Anne Arundel Counties, Maryland” (MDE 2010c).

<sup>3</sup> For the Rocky Gorge Reservoir point and nonpoint source characterization, please refer to the remainder this Appendix, and for additional information regarding other sources of sediment to the reservoir (i.e., upstream sources) see the “Total Maximum Daily Loads of Phosphorus and Sediments for Triadelphia Reservoir (Brighton Dam) and Total Maximum Daily Loads of Phosphorus for Rocky Gorge Reservoir, Howard, Montgomery, and Prince George’s Counties, Maryland” (MDE 2008b).

**FINAL**

**TMDLS**

**Table D-4: Little Patuxent River Average Annual TMDL (ton/yr)**

TMDL (ton/yr)	LA			WLA		MOS
	LA <sub>MP</sub> <sup>1</sup>	LA <sub>LP</sub>		NPDES Stormwater WLA <sub>LP</sub>	Process Water WLA <sub>LP</sub>	
31,199.8	11,899.1	6,042.1		11,225.8	2,032.8	Implicit
	Upstream Load Allocations <sup>2,3</sup>		Little Patuxent River Watershed TMDL Contribution			

**Notes:** <sup>1</sup> For Middle Patuxent River watershed WLA and LA characterization, please refer to the “Water Quality Analysis of Sediment in the Middle Patuxent River Watershed, Howard County, Maryland” (MDE 2010d).

<sup>2</sup> Although for the purpose of this analysis the upstream load is referred to as an LA, it could include loads from point and nonpoint sources.

<sup>3</sup> A delivery factor of 1 was used for the Upstream LA.

**Table D-5: Patuxent River Upper Average Annual TMDL (ton/yr)**

TMDL (ton/yr)	LA			WLA		MOS
	LA <sub>LP</sub> <sup>1</sup>	LA <sub>RG</sub> <sup>2</sup>	LA <sub>UP</sub>	NPDES Stormwater WLA <sub>UP</sub>	Process Water WLA <sub>UP</sub>	
56,607.1	31,199.8	5,769.0	10,966.2	8,064.6	607.5	Implicit
	Upstream Load Allocations <sup>3,4</sup>		Patuxent River Upper Watershed TMDL Contribution			

**Notes:** <sup>1</sup> For Little Patuxent River watershed WLA and LA characterization, please refer to the “Total Maximum Daily Load of Sediment in the Little Patuxent River Watershed, Howard and Anne Arundel Counties, Maryland” (MDE 2010c).

<sup>2</sup> For Rocky Gorge Reservoir WLA and LA characterization, please refer to the remainder of this Appendix, and for additional information regarding other sources of sediment to the reservoir (i.e., upstream sources) see the “Total Maximum Daily Loads of Phosphorus and Sediments for Triadelphia Reservoir (Brighton Dam) and Total Maximum Daily Loads of Phosphorus for Rocky Gorge Reservoir, Howard, Montgomery, and Prince George’s Counties, Maryland” (MDE 2008b).

<sup>3</sup> Although for the purposes of this analysis the upstream loads are referred to as LAs, they could include loads from point and nonpoint sources.

<sup>4</sup> A delivery factor of 1 was used for the Upstream LAs.

**CALCULATION OF ROCKY GORGE RESERVOIR LOADS**

The “*Total Maximum Daily Loads of Phosphorus and Sediments for Triadelphia Reservoir (Brighton Dam) and Total Maximum Daily Loads of Phosphorus for Rocky Gorge Reservoir, Howard, Montgomery, and Prince George’s Counties, Maryland*” (*Reservoir TMDL*) was approved by the EPA in 2008 (MDE 2008b). Because the Rocky Gorge Reservoir was never listed as impaired for sediment, there was no calculation of its sediment loads in the *Reservoir TMDL*. However, the sediment load from the Rocky Gorge Reservoir needed to be calculated in order to be applied as an upstream load to the Patuxent River Upper Watershed. Therefore, in order to maintain consistency, a baseline sediment load was calculated using the watershed and water quality models from the *Reservoir TMDL*. Additionally, an informational sediment TMDL value was calculated for the Rocky Gorge Reservoir, based solely on the sediment reduction which naturally occurs when the phosphorus TMDL reduction is applied. The informational TMDL value is based on a ratio of 2:1 phosphorus to sediment reductions applied in Maryland reservoir TMDLs. Since the Reservoir TMDL requires a 48% phosphorus reduction, the informational TMDL for sediment would be equal to a 24% reduction from the baseline sediment load. The Rocky Gorge Reservoir is not impaired for sediment and does not require a sediment reduction to meet water quality standards.

Table D-6 summarizes the average annual baseline sediment loads (ton/yr) for the Rocky Gorge Reservoir. Table D-7 summarizes the average annual informational TMDL allocations in ton/yr for the Rocky Gorge Reservoir.

**Table D-6: Rocky Gorge Reservoir Baseline Annual Sediment Loads (ton/yr), Rocky Gorge Reservoir, 1998-2003**

Source	Load (ton/yr)
Triadelphia Reservoir	4,790
Total Edge-of-Stream	9,558
Net Scour	4,919
<b>Total Input</b>	<b>19,267</b>
<b>Total Output<sup>1</sup></b>	<b>12,471</b>
Trapping Efficiency: 35% <sup>2</sup>	
<b>Sediment Discharged to Patuxent River Upper<sup>3</sup></b>	<b>7,689</b>

**Notes:** <sup>1</sup> Total Output: The sediment load (ton/yr) that actually leaves the model. This includes sediment discharged to the Patuxent River and sediment withdrawn in water intakes.  
<sup>2</sup> Trapping Efficiency: (Total Input – Total Output)/Total Input.  
<sup>3</sup> Sediment Discharged: Estimate of sediment discharged to Rocky Gorge based on product of (1) sediment concentrations in outflow from reservoir and (2) daily average flow as recorded at USGS gage 01592500 (Patuxent River near Laurel).

**Table D-7: Average Annual Sediment Loads (ton/yr), Rocky Gorge Reservoir, 1998-2003, Phosphorus TMDL Scenario**

Source	Load (ton/yr)
Triadelphia Reservoir	3,401
Total Edge-of-Stream	7,422
Net Scour	3,820
<b>Total Input</b>	<b>14,643</b>
<b>Total Output<sup>1</sup></b>	<b>9,379</b>
Trapping Efficiency: 36% <sup>2</sup>	
<b>Sediment Discharged to Patuxent River Upper<sup>3</sup></b>	<b>5,769</b>

**Notes:** <sup>1</sup> Total Output: The sediment load (ton/yr) that actually leaves the model. This includes sediment discharged to the Patuxent River and sediment withdrawn in water intakes.  
<sup>2</sup> Trapping Efficiency: (Total Input – Total Output)/Total Input.  
<sup>3</sup> Sediment Discharged: Estimate of sediment discharged to Rocky Gorge based on product of (1) sediment concentrations in outflow from reservoir and (2) daily average flow as recorded at USGS gage 01592500 (Patuxent River near Laurel).