

FINAL

**Total Maximum Daily Load of Sediment
in the Non-Tidal Port Tobacco River Watershed,
Charles County, Maryland**

FINAL



DEPARTMENT OF THE ENVIRONMENT
1800 Montgomery Boulevard, Suite 540
Baltimore, Maryland 21230-1718

Submitted to:

Water Protection Division
U.S. Environmental Protection Agency, Region III
1650 Arch Street
Philadelphia, PA 19103-2029

August 2019

EPA Submittal Date: September 3, 2019
EPA Approval Date: October 11, 2019

Port Tobacco River
Sediment TMDL
Document version: August 2019

Table of Contents

List of Figures i
List of Tables i
List of Abbreviations ii
EXECUTIVE SUMMARY iv
1.0 INTRODUCTION 1
2.0 SETTING AND WATER QUALITY DESCRIPTION 4
 2.1 General Setting 4
 2.1.1 Land-use 7
 2.2 Source Assessment 10
 2.2.1 Nonpoint Source Assessment 10
 2.2.2 Point Source Assessment 12
 2.2.3 Summary of Baseline Loads 13
 2.3 Water Quality Characterization 14
 2.4 Water Quality Impairment 18
3.0 TARGETED WATER QUALITY GOAL 20
4.0 TOTAL MAXIMUM DAILY LOADS AND SOURCE ALLOCATION 21
 4.1 Overview 21
 4.2 Analysis Framework 21
 4.3 Scenario Descriptions and Results 23
 4.4 Critical Condition and Seasonality 25
 4.5 TMDL Loading Caps 25
 4.6 Load Allocations Between Point and Nonpoint Sources 27
 4.7 Margin of Safety 29
 4.8 Summary of Total Maximum Daily Loads 30
5.0 ASSURANCE OF IMPLEMENTATION 31
REFERENCES 36
APPENDIX A – Watershed Characterization Data A1
APPENDIX B – Technical Approach Used to Generate Maximum Daily Loads B1

List of Figures

Figure 1: Location Map of the Port Tobacco River Watershed in Charles County, Maryland 6

Figure 2: Land-use of the Port Tobacco River Watershed 9

Figure 3: Monitoring Stations in the Port Tobacco River Watershed 17

Figure 4: Designated Use Classes of the Port Tobacco River Watershed in Charles County, Maryland 19

Figure B-1: Daily Time Series of CBP River Segment Daily Simulation Results for the Port Tobacco River Watershed B4

List of Tables

Table ES-1: Port Tobacco River 2018 Integrated Report Listings v

Table ES-2: Port Tobacco River Watershed Baseline Sediment Loads (ton/yr) vii

Table ES-3: Port Tobacco River Watershed Average Annual TMDL of Sediment (ton/yr) viii

Table ES-4: Port Tobacco River Watershed Baseline Load, TMDL, and Total Reduction Percentage viii

Table 1: Port Tobacco River 2018 Integrated Report Listings 2

Table 2: Land-Use Percentage Distribution for the Port Tobacco River Watershed 8

Table 3: Charles County Target EOF TSS Loading Rates (ton/acre/yr) by Land-Use 11

Table 4: Port Tobacco River Watershed Baseline Sediment Loads (ton/yr) 13

Table 5: Detailed Baseline Sediment Loads Within the Port Tobacco River Watershed^{1,2} 14

Table 6: Monitoring Stations in the Port Tobacco River Watershed 16

Table 7: Port Tobacco River Watershed Baseline Load and TMDL 26

Table 8: Port Tobacco River Watershed TMDL Reductions by Source Category 29

Table 9: Port Tobacco River Watershed Average Annual TMDL of Sediment (ton/yr).. 30

Table 10: Port Tobacco River Watershed Maximum Daily Load of Sediment (ton/day) 30

Table A-1: Reference Watersheds in the Western Coastal Plains Physiographic Region A1

Table B-1: Port Tobacco River Watershed Maximum Daily Loads of Sediment/TSS (ton/day) B6

List of Abbreviations

| | |
|--------------------|--|
| AFO | Animal Feeding Operations |
| BIBI | Benthic Index of Biotic Integrity |
| BIP | Buffer Incentive Program |
| BMP | Best Management Practice |
| BSID | Biological Stressor Identification |
| CAFOs | Concentrated Animal Feeding Operations |
| CBLCD | Chesapeake Bay Land-Cover Dataset |
| CBP | Chesapeake Bay Program |
| CBP P4.3 | Chesapeake Bay Program Model Phase 4.3 |
| CBP P5.3.2 | Chesapeake Bay Program Model Phase 5.3.2 |
| CCAP | Coastal Change Analysis Program |
| CFR | Code of Federal Regulations |
| cfs | Cubic Feet per Second |
| COMAR | Code of Maryland Regulations |
| CREP | Conservation Reserve Enhancement Program |
| CV | Coefficient of Variation |
| CWA | Clean Water Act |
| DI | Diversity Index |
| DMR | Discharge Monitoring Record |
| EOF | Edge-of-Field |
| EOS | Edge-of-Stream |
| EPT | <i>Ephemeroptera, Plecoptera, and Trichoptera</i> |
| EQIP | USDA's Environmental Quality Incentives Program |
| ESD | Environmental Site Design |
| FIBI | Fish Index of Biologic Integrity |
| GIS | Geographic Information System |
| HBI | Hilsenhoff Biotic Index |
| HSPF | Hydrological Simulation Program Fortran |
| IBI | Index of Biotic Integrity |
| LA | Load Allocation |
| m | Meter |
| m ³ /yr | Meters cubed per year |
| MACS | Maryland Agricultural Water Quality Cost-Share Program |
| MAL | Minimum Allowable IBI Limit |
| MBSS | Maryland Biological Stream Survey |
| MDA | Maryland Department of Agriculture |
| MDDNR | Maryland Department of Natural Resources |
| MDE | Maryland Department of the Environment |
| MDL | Maximum Daily Load |
| MDP | Maryland Department of Planning |
| MGD | Millions of Gallons per Day |
| mg/l | Milligrams per liter |

FINAL

| | |
|-------------|---|
| MGS | Maryland Geological Survey |
| MOS | Margin of Safety |
| MRLC | Multi-Resolution Land Characteristics |
| MS4 | Municipal Separate Storm Sewer System |
| NLCD | National Land-Cover Dataset |
| NOAA | National Oceanic and Atmospheric Administration |
| NPS | Nonpoint Source |
| NPDES | National Pollutant Discharge Elimination System |
| NRCS | Natural Resource Conservation Service |
| NRI | Natural Resources Inventory |
| POTOH2 | Port Tobacco River Oligohaline |
| PSU | Primary Sampling Unit |
| SCS | Soil Conservation Service |
| SDF | Sediment Delivery Factor |
| SHA | State Highway Administration |
| TMDL | Total Maximum Daily Load |
| ton/acre/yr | Tons per acre per year |
| ton/day | Tons per day |
| ton/yr | Tons per year |
| TSD | Technical Support Document |
| TSS | Total Suspended Solids |
| USDA | United States Department of Agriculture |
| USEPA | U.S. Environmental Protection Agency |
| USGS | United States Geological Survey |
| WIP | Watershed Implementation Plan |
| WLA | Waste Load Allocation |
| WQA | Water Quality Analysis |
| WQLS | Water Quality Limited Segment |
| WWTP | Wastewater Treatment Plant |

FINAL

EXECUTIVE SUMMARY

Section 303(d) of the federal Clean Water Act (CWA) and the U.S. Environmental Protection Agency's (USEPA) implementing regulations direct each state to identify and list waters, known as water quality limited segments (WQLSs), in which current required controls of a specified substance are inadequate to achieve water quality standards. For each WQLS, the State is required to either establish a TMDL of the specified substance that the waterbody can receive without violating water quality standards, or demonstrate that water quality standards are being met (CFR 2016b). This document, upon approval by USEPA, establishes a Total Maximum Daily Load (TMDL) for sediment/total suspended solids (TSS) in the non-tidal Maryland 8-Digit Port Tobacco River watershed (2018 *Integrated Report of Surface Water Quality in Maryland* Assessment Unit ID: MD-02140109). In this TMDL, the terms TSS and sediment may be used interchangeably.

The Port Tobacco River watershed is associated with two assessment units in Maryland's Integrated Report: a non-tidal 8-digit watershed (02140109) and one estuary portion [Port Tobacco River Oligohaline (POTOH2)]. A sediment TMDL for the POTOH2 was established as part of the Chesapeake Bay TMDLs in 2010. Background information on the tidal portion of the watershed is presented for informational purposes only.

The Maryland Department of the Environment (MDE) identified the waters of the Port Tobacco River watershed and associated assessment units on the State's 2018 Integrated Report as impaired by multiple pollutants (MDE 2018). Table ES-1 identifies Integrated Report listings associated with this watershed. A data solicitation for TSS/sediment was conducted by MDE in May 2018, and all readily available data has been considered.

The Maryland Surface Water Use Designation in the Code of Maryland Regulations (COMAR) for the Port Tobacco River watershed's nontidal tributaries are designated as Use Class I - *water contact recreation, and protection of nontidal warmwater aquatic life*. Tidal tributaries and the Port Tobacco River mainstem are designated Use Class II - *support of estuarine and marine aquatic life and shellfish harvesting* (COMAR 2016 a, b, c).

The non-tidal Port Tobacco River watershed was originally listed for impacts to biological communities on the 2008 Integrated Report. The listing was based on the biological assessment methodology, which uses aquatic health scores, consisting of the Benthic Index of Biotic Integrity (BIBI) and the Fish Index of Biotic Integrity (FIBI). These indices indicated that the biological metrics for the watershed exhibit a significant negative deviation from reference conditions (MDE 2008).

Table ES-1: Port Tobacco River 2018 Integrated Report Listings

| Watershed | Basin Code | Subwatershed | Tidal/ Non-tidal | Designated Use Class | Year Listed | Identified Pollutant | Listing Category |
|--------------------------------|------------|----------------------|---------------------|--|-------------|----------------------|------------------|
| Port Tobacco River | 02140109 | --- | Non-tidal | I - Aquatic Life and Wildlife | 2016 | TSS | 5 |
| | | Wills Branch | | | | Chlorides | |
| | | Hoghole Run | | | | Sulfates | |
| | | Jennie Run | | I - Water Contact Sports | 2006 | Enterococcus | 5 |
| | | Port Tobacco Creek | | | | | |
| | | Multiple subsegments | | | | | |
| Port Tobacco River Oligohaline | POTOH2 | --- | Tidal | II - Open-Water Fish and Shellfish Subcategory | 1996 | TP | 4a |
| | | | | II - Seasonal Migratory Fish Spawning and Nursery Subcategory | | TN | |
| | | | | II - Seasonal Shallow-Water Submerged Aquatic Vegetation Subcategory | | TP | |
| | | | | TN | | | |
| | | | | | | TSS | |

- Category 3 indicates insufficient data to make a listing category determination
- Category 4a indicates a TMDL has been completed and approved by EPA, but are still impaired
- Category 4c indicates the cause of the impairment is pollution and not a pollutant
- Category 5 indicates that the waterbody is impaired and a TMDL or water quality analysis (WQA) is needed.

In order to determine what stressor or stressors are impacting aquatic life, MDE’s *Biological Stressor Identification* (BSID) methodology was applied (MDE 2009). The BSID analysis for the Port Tobacco River watershed identified sediment (i.e. moderate bar formation and channel alternation), inorganic pollutants (i.e. chlorides, conductivity, and sulfates), and nutrients (i.e. high nitrites and high total phosphorous). Among these parameters, the sediment stressor group is impacting approximately 51% of impaired stream miles within the Port Tobacco River watershed.

Additionally, data generated by the BSID process suggest that the degradation of biological communities in the Port Tobacco River watershed is at least in part due to natural conditions that are probably exacerbated by the watershed’s agricultural legacy and increasing urban land use and its concomitant effects: altered hydrology and elevated levels of sediments, and inorganic pollutants. Further details of this analysis are presented in the 2015 document entitled, *Watershed Report for Biological Impairment of the Non-Tidal Port Tobacco River Watershed, Charles County, Maryland Biological Stressor Identification Analysis Results and Interpretation* (MDE 2015).

As a result of the BSID analysis, the non-tidal MD 8-digit Port Tobacco River watershed was listed on the 2018 Integrated Report as impaired by TSS thus requiring a TMDL. The TMDL will only apply to the non-tidal portion of the watershed. For simplicity, further

FINAL

reference in this document to Port Tobacco River Watershed will refer only to the non-tidal MD 8-digit watershed.

The objective of this TMDL is to ensure that watershed sediment loads are at a level that supports the Use Class I designations for the Port Tobacco River watershed. The TMDL will address water clarity problems and associated impacts to aquatic life in the Port Tobacco River watershed caused by high sediment and TSS concentrations. Separate sediment TMDLs were developed for the Use Class II impairments as part of the Chesapeake Bay TMDLs in 2010, which only apply to the tidal portion of the Port Tobacco River and are not covered in this document.

The CWA requires TMDLs to be protective of all the designated uses applicable to a particular waterbody. The primary focus of this TMDL is the designated use of protection of aquatic life because the Integrated Report listing was based on a biological assessment of the watershed. The biological assessment revealed the current levels of TSS and other pollutants prevent the watershed from achieving its designated use of supporting aquatic life. The required reductions within the TMDL are expected to protect all designated uses of the watershed from sediment impacts, including water contact recreation. Aquatic life is more sensitive to sediment impacts than recreation because of continuous exposure that can affect respiration and propagation. Recreation, on the other hand, is sporadic and sediment is unlikely to pose a human health risk due to dermal contact or minimal ingestion that could occur during recreation.

Currently in Maryland, there are no specific numeric criteria that quantify the impact of sediment on the aquatic life of non-tidal stream systems. In order to quantify the impact of sediment on the aquatic life of non-tidal stream systems, a reference watershed TMDL approach was used, which resulted in the establishment of a *sediment loading threshold* (MDE 2006). This threshold is based on a detailed analysis of sediment loads from watersheds that are identified as supporting aquatic life (i.e., reference watersheds) based on Maryland's biological assessment methodology (Roth et al. 1998, 2000; Stribling et al. 1998). This threshold is then used to determine a watershed specific sediment TMDL endpoint. The resulting loads are considered the maximum allowable loads the waterbody can receive without causing any sediment-related impacts to aquatic health.

In order to use a reference watershed approach, sediment loads are estimated using a watershed model. For this analysis, the Chesapeake Bay Program Phase 5.3.2 (CBP P5.3.2) watershed model was chosen and specifically, the *edge-of-stream* (EOS) land-use sediment loads were used. The CBP P5.3.2 model was appropriate for this TMDL because the spatial domain of the model segmentation aggregates to the MD 8-digit watershed scale, which is consistent with the impairment listing.

USEPA's regulations require TMDLs to take into account seasonality and critical conditions for stream flow, loading, and water quality parameters (CFR 2016b). The intent of this requirement is to ensure that the water quality of the waterbody is protected during times when it is most vulnerable. The biological monitoring data used to determine the reference watersheds reflect the impacts of stressors (i.e., sediment impacts

FINAL

to stream biota) over the course of time (i.e., captures the impacts of both high and low flow events). Thus, critical conditions are inherently addressed. Seasonality is captured in several components. First, it is implicitly included in biological sampling as biological communities reflect the impacts of stressors over time, as described above. Second, the Maryland Biological Stream Survey (MBSS) dataset, which serves as the primary dataset for calculating the biological metrics of the watershed (i.e., BIBI and FIBI scores), included benthic sampling in the spring and fish sampling in the summer. Moreover, the sediment loading rates used in the TMDL were determined using the CBP P5.3.2 model which is a continuous simulation model with a simulation period 1991-2000, based on Hydrological Simulation Program Fortran (HSPF) model, thereby addressing annual changes in hydrology and capturing wet, average, and dry years.

All TMDLs need to be presented as a sum of waste load allocations (WLAs) for point sources and load allocations (LAs) for nonpoint sources generated within the assessment unit, accounting for natural background, tributary and adjacent segment loads. Furthermore, all TMDLs must include a margin of safety (MOS) to account for any lack of knowledge and uncertainty concerning the relationship between loads and water quality (CFR 2016a, b). It is proposed that the estimated variability around the reference watershed group used in this analysis already accounts for such uncertainty, and therefore the MOS is implicitly included. Because the sediment loading threshold was conservatively based on the median (50th percentile) sediment loading rates from reference watersheds, Maryland has adopted an implicit MOS for sediment TMDLs.

The Port Tobacco River watershed total baseline sediment load is 1,780 tons per year (ton/yr). The Port Tobacco River watershed baseline load contribution is further subdivided into a nonpoint source baseline load (Nonpoint Source BL_{PTR}) and two types of point source baseline loads: National Pollutant Discharge Elimination System regulated stormwater (NPDES Stormwater BL_{PTR}) and NPDES regulated wastewater (NPDES Wastewater BL_{PTR}) (see Table ES-2).

Table ES-2: Port Tobacco River Watershed Baseline Sediment Loads (ton/yr)

| Total Baseline Load (ton/yr) | = | Nonpoint Source BL_{PTR} | + | NPDES Stormwater BL_{PTR} | + | Wastewater BL_{PTR} |
|---|----------|---|----------|--|----------|--|
| 1,780 | = | 1,188 | + | 588 | + | 4 |

Note: Baseline loads are estimated using CBP 5.3.2, 2009 Progress Scenario

The Port Tobacco River Watershed average annual TMDL of TSS is 1486 ton/yr (a 17% reduction from the baseline load). The Port Tobacco River TMDL contribution is further subdivided into point and nonpoint source allocations and is comprised of a load allocation (LA_{PTR}) of 1016 ton/yr, a NPDES Stormwater Waste Load Allocation (NPDES Stormwater WLA_{PTR}) of 466 ton/yr, and a Wastewater Load Allocation (Wastewater WLA_{PTR}) of 4 ton/yr (see Table ES-3).

Table ES-3: Port Tobacco River Watershed Average Annual TMDL of Sediment (ton/yr)

| | | | | | | | | |
|----------------------|---|-------------------------|---|---|---|---|---|------------|
| TMDL (ton/yr) | = | LA_{PTR} | + | NPDES Stormwater WLA_{PTR} | + | Wastewater WLA_{PTR} | + | MOS |
| 1,486 | = | 1,016 | + | 466 | + | 4 | + | Implicit |

Table ES-4: Port Tobacco River Watershed Baseline Load, TMDL, and Total Reduction Percentage

| Baseline Load (ton/yr) | TMDL (ton/yr) | Total Reduction (%) |
|-------------------------------|----------------------|----------------------------|
| 1,780 | 1,486 | 17 |

In addition to the TMDL value, a Maximum Daily Load (MDL) is also presented in this document. The calculation of the MDL, which is derived from the TMDL average annual loads, is explained in Appendix B and presented in Table B-1.

Section 303(d) of the CWA and current USEPA regulations require reasonable assurance that the TMDL can and will be implemented. Once the USEPA has approved this TMDL and it is known what measures must be taken to reduce pollution levels, implementation of best management practices (BMPs) is expected to take place by a collection of stakeholders. The Port Tobacco River Sediment TMDL is expected to be implemented as part of a staged process. MDE intends for the required reductions to be implemented in an iterative process that first addresses those sources with the largest impact to water quality, while consistently considering costs associated with implementation.

Implementation of the Port Tobacco River Watershed Sediment TMDL is expected to occur in conjunction with implementation efforts being made to meet sediment target loads consistent with the 2010 Chesapeake Bay TMDLs. The Chesapeake Bay TMDLs were established by the USEPA in 2010 and are scheduled for full implementation by 2025 (USEPA 2010a). The Bay TMDLs require reductions of nitrogen, phosphorus, and sediment loads throughout the Bay watershed to meet water quality standards that protect the designated uses in the Bay and its tidal tributaries.

In addition, MDE published the Final Determination to issue a Stormwater Permit to Charles County in December 2014 (MDE 2014). The permit states, “*By regulation at 40 CFR §122.44, BMPs and programs implemented pursuant to this permit must be consistent with applicable WLAs developed under [US]EPA approved TMDLs*” For TMDLs approved after this permit, implementation plans are due within one year of USEPA approval of the TMDL. Many of the practices which are described in the permittees’ stormwater WLA implementation plans may also be used by the permittees as retrofits for meeting their impervious area restoration requirements (20% retrofit per five-year permit cycle).

This TMDL will ensure that watershed sediment loads are at a level to support the designated uses for the Port Tobacco River watershed, and more specifically, at a level to

FINAL

protect aquatic life. The TMDL, however, will not completely resolve the impairment to biological communities within the watershed. Since the BSID watershed analysis identifies other possible stressors impacting the biological conditions (e.g. sulfates), an additional TMDL or TMDLs may be needed to fully address the impacts to biological communities.

While this TMDL establishes a sediment loading target for the watershed, watershed managers and other stakeholders should always remain cognizant that the endpoint of this TMDL, and hence the definition of its successful implementation, is based on in-stream biological health. Load reductions are critical to tracking this effort, since the TMDL target is defined as the point where sediment loads match those seen in reference watersheds, but the watershed cannot be delisted or classified as meeting water quality standards until it is demonstrated that the biological health of the stream system is no longer impaired by sediment. In planning any implementation efforts related to this TMDL, careful consideration should be given to how sediment load reductions will influence biological communities.

Many of the implementation actions to address sediment could concurrently address the other stressors identified in the BSID report. For example, a stream restoration project that reduces sediment loads could improve flow regimes and in-stream habitat. Since biological improvements will likely only be seen when multiple structural and pollutant stressors are addressed, watershed managers developing plans to address sediment should consider the positive effect of restoration projects on other stressors. Where possible, preference should be given to designs that address multiple stressors.

FINAL

1.0 INTRODUCTION

Section 303(d) of the federal Clean Water Act (CWA) and the U.S. Environmental Protection Agency's (USEPA) implementing regulations direct each state to identify and list waters, known as water quality limited segments (WQLSs), in which current required controls of a specified substance are inadequate to achieve water quality standards. For each WQLS, the State is required to either establish a TMDL of the specified substance that the waterbody can receive without violating water quality standards, or demonstrate that water quality standards are being met (CFR 2016b). This document, upon approval by the U.S. Environmental Protection Agency (USEPA), establishes a Total Maximum Daily Load (TMDL) for sediment in the non-tidal Maryland 8-Digit Port Tobacco River watershed (2018 *Integrated Report of Surface Water Quality in Maryland* Assessment Unit ID: MD-02140109). In this TMDL report, the terms Total Suspended Solids (TSS) and sediment may be used interchangeably.

TMDLs are established to determine the pollutant load reductions needed to achieve and maintain water quality standards. A water quality standard is the combination of a designated use for a particular body of water and the water quality criteria designed to protect that use. Designated uses include activities such as swimming, drinking water supply, protection of aquatic life, and shellfish propagation and harvest. Water quality criteria consist of narrative statements and numeric values designed to protect the designated uses. Criteria may differ among waters with different designated uses. The Port Tobacco River watershed is associated with two assessment units in Maryland's Integrated Report: a non-tidal 8-digit watershed (02140109) and one estuarine portion [Port Tobacco River Oligohaline (POTOH2)]. A sediment TMDLs for the POTOH2 was established as part of the Chesapeake Bay TMDLs in 2010. Background information on the tidal portion of the watershed is presented for informational purposes only.

The Maryland Department of the Environment (MDE) identified the waters of the Port Tobacco River watershed and associated assessment units on the State's 2018 Integrated Report as impaired by multiple pollutants (MDE 2018). Table 1 identifies the impairment listings associated with this watershed. A data solicitation for TSS was conducted by MDE in May 2018, and all readily available data have been considered.

Table 1: Port Tobacco River 2018 Integrated Report Listings

| Watershed | Basin Code | Subwatershed | Tidal/ Non-tidal | Designated Use Class | Year Listed | Identified Pollutant | Listing Category |
|--------------------------------|------------|----------------------|---------------------|--|-------------|----------------------|------------------|
| Port Tobacco River | 02140109 | --- | Non-tidal | I - Aquatic Life and Wildlife | 2016 | TSS | 5 |
| | | Wills Branch | | | | Chlorides | |
| | | Hoghole Run | | | | Sulfates | |
| | | Jennie Run | | I - Water Contact Sports | 2006 | Enterococcus | 5 |
| | | Port Tobacco Creek | | | | | |
| | | Multiple subsegments | | | | | 2 |
| Port Tobacco River Oligohaline | POTOH2 | --- | Tidal | II - Open-Water Fish and Shellfish Subcategory | 1996 | TP | 4a |
| | | | | II - Seasonal Migratory Fish Spawning and Nursery Subcategory | | TN | |
| | | | | II - Seasonal Shallow-Water Submerged Aquatic Vegetation Subcategory | | TP | |
| | | | | | | TN | |
| | | | | | | TSS | |

- Category 2 indicates the waterbody is meeting water quality standards for the identified substance
- Category 3 indicates insufficient data to make a listing category determination
- Category 4a indicates a TMDL has been completed and approved by EPA, but are still impaired
- Category 4c indicates the cause of the impairment is pollution and not a pollutant
- Category 5 indicates that the waterbody is impaired and a TMDL or water quality analysis (WQA) is needed.

The Maryland Surface Water Use Designation in the Code of Maryland Regulations (COMAR) for the Port Tobacco River watershed’s nontidal tributaries are designated as Use Class I - *water contact recreation, and protection of nontidal warmwater aquatic life*. Tidal tributaries and the Port Tobacco River mainstem are designated Use Class II - *support of estuarine and marine aquatic life and shellfish harvesting* (COMAR 2016a, b, c).

This document, upon approval by the USEPA, establishes a Total Maximum Daily Load (TMDL) for sediment in the non-tidal Maryland 8-Digit Port Tobacco River watershed (2018 *Integrated Report of Surface Water Quality in Maryland* Assessment Unit ID: MD-02140109). In this TMDL report, the terms TSS and sediment may be used interchangeably.

The Port Tobacco River watershed was originally listed for impacts to biological communities on the 2008 Integrated Report. The listing was based on the biological assessment methodology, which uses aquatic health scores, consisting of the Benthic Index of Biotic Integrity (BIBI) and Fish Index of Biotic Integrity (FIBI). These indices

FINAL

indicated that the biological metrics for the watershed exhibit a significant negative deviation from reference conditions (MDE 2008).

In order to determine what stressor or stressors are impacting aquatic life, MDE's *Biological Stressor Identification* (BSID) methodology was applied (MDE 2009). The BSID analysis for the Port Tobacco River watershed identified sediment, nutrients, and inorganic pollutants (i.e. sulfates). Among these parameters, the sediment stressor group is impacting approximately 51% of impaired stream miles within the Port Tobacco River watershed.

Additionally, data generated by the BSID process suggest that the degradation of biological communities in the Port Tobacco River watershed is at least in part due to natural conditions that are probably exacerbated by the watershed's agricultural legacy and increasing urban land use and its concomitant effects: altered hydrology and elevated levels of sediments, inorganic pollutants and nutrients. Further details of this analysis are presented in the 2015 document entitled, *Watershed Report for Biological Impairment of the Non-Tidal Port Tobacco River Watershed, Charles County, Maryland Biological Stressor Identification Analysis Results and Interpretation* (MDE 2015).

The objective of this TMDL is to ensure that watershed sediment loads are at a level that supports the Use Class I designation for the Port Tobacco River watershed. The TMDL will address water clarity problems and associated impacts to aquatic life in the Port Tobacco River watershed caused by high sediment and TSS concentrations.

2.0 SETTING AND WATER QUALITY DESCRIPTION

2.1 General Setting

Location

The Port Tobacco River watershed is located on the lower western shore of Maryland in Charles County (see Figure 1). The Port Tobacco River watershed is comprised of several major tributaries, the mainstream of Port Tobacco Creek, Jennie Run, Hoghole Run, and Wills Branch. According to the Chesapeake Bay Program's Phase 5.3.2 watershed model the drainage area of the Maryland 8-digit watershed is approximately 28,000 acres. The Maryland 8-digit watershed boundary also includes approximately 2,000 acres of tidal water. The watershed is located in the Coastal Plain region, one of three distinct ecoregions identified in the MDDNR MBSS Index of Biological Integrity (IBI) metrics (Southerland et al. 2005a). The total population in the Port Tobacco River watershed is approximately 17,450 (US Census Bureau 2010).

There are two "high quality," or Tier II, stream segments (BIBI and FIBI aquatic life assessment scores > 4 [scale 1-5]) located within the Port Tobacco River watershed. Hogole Run and Jennie Run are both designated as Tier II Catchments (MDE 2018). Tier II segments would require the implementation of Maryland's anti-degradation policy (COMAR 2016d; MDE 2011). Permitted activities occurring anywhere upstream of the designated stream segment may be subject to review in order to maintain high quality of the designated waters.

Geology/Soils

The Port Tobacco River lies on the western shore of the Coastal Plain physiographic province. The Coastal Plain region is characterized by flat or gently rolling topography and elevations rising from sea level to about 100 feet. The Coastal Plain Province is underlain by a wedge of unconsolidated sediments including gravel, sand, silt, and clay (MGS 2007). Overall, about 3,036 acres of the watershed is prime agricultural soil that does not require drainage or irrigation (MDE 2015).

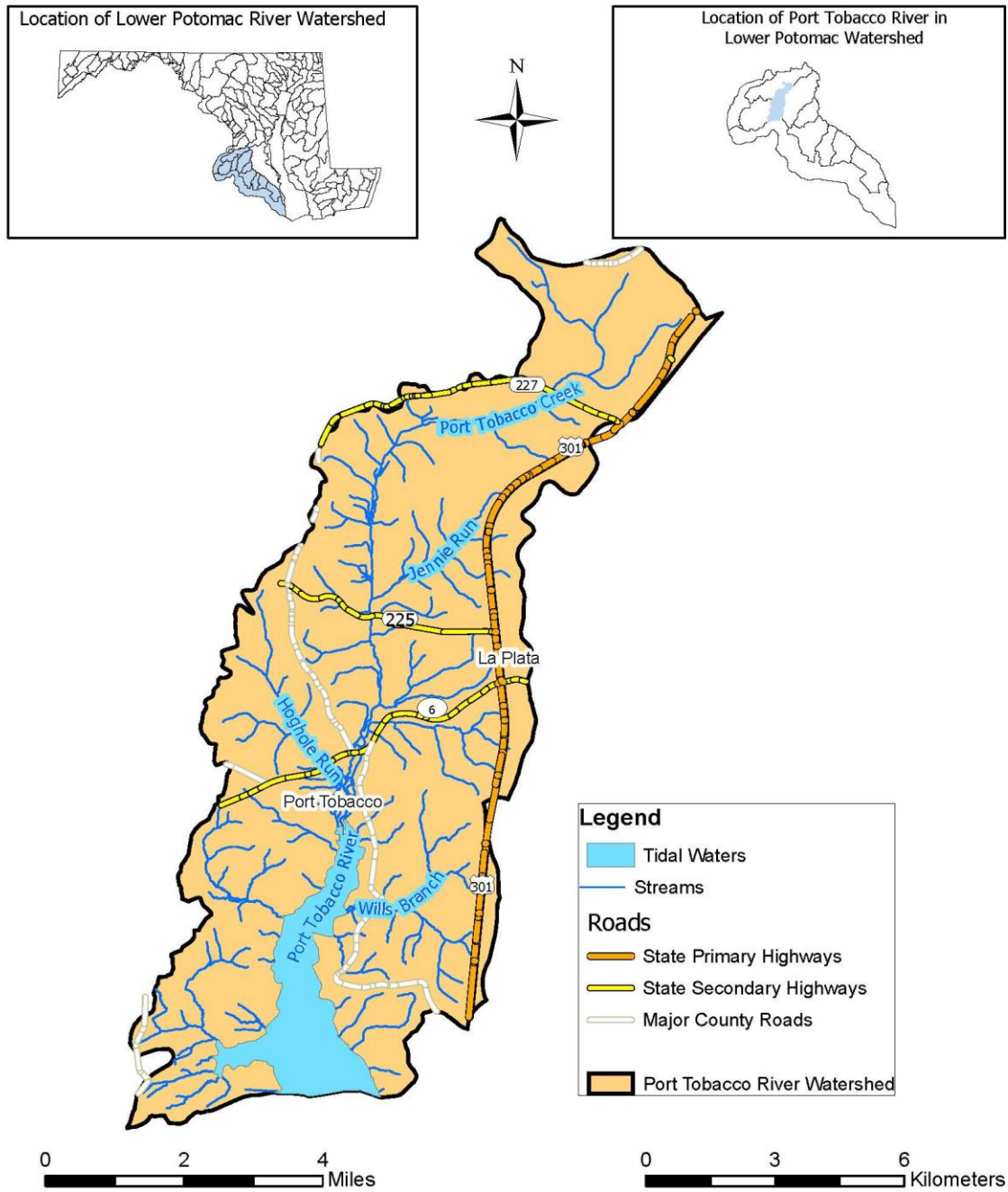
The Coastal Plain surficial geology is characterized by thick, unconsolidated marine sediments deposited over the crystalline rock of the piedmont province (MGS 2012; MDE 2000). The soils have a silt loam and sand consistency, and are highly erodible. There are three soil series in the watershed, Collington, Othello, and Westphalia. These soils consist of unconsolidated deposits of gravel, sand, silt, and clay. The moisture capacity of the soils range from moderately low to high, strongly to extremely acidic, and have a high silt concentration and erosion potential. The topography ranges from nearly level to very steep; erosion can easily remove any high spots that develop in these soft, uncemented materials (USDA 2006).

The Port Tobacco River watershed drains from north to south, following the dip of the underlying crystalline bedrock in the Piedmont Province. The surface elevations range

FINAL

from approximately 500 feet to sea level at the Chesapeake Bay shorelines. Stream channels of the sub-watersheds are well incised in the Eastern Piedmont, and exhibit relatively straight reaches and sharp bends, reflecting their tendency to following zones of fractured or weathered rock. The stream channels broaden abruptly as they flow down across the fall line and into the soft, flat Coastal Plain sediments (CES 1995).

The United States Department of Agriculture (USDA) Natural Resources Conservation Service (NRCS) classifies soils into 4 hydrologic soil groups: Group A soils have high infiltration rates and are typically deep well drained/excessively drained sands or gravels; Group B soils have moderate infiltration rates and consist of soils that are moderately deep to deep and moderately well to well drained soils, with moderately fine/coarse textures; Group C soils have slow infiltration rates with a layer that impedes downward water movement, and they primarily have moderately fine-to-fine textures; Group D soils have very slow infiltration rates consisting of clay soils with a permanently high water table that are often shallow over nearly impervious material. The Port Tobacco River watershed is comprised primarily of Group B soils (37%) and Group C soils (48%), with small portions of the watershed consisting of Group D soils (15%) and Group A soils (0.3%) (USDA 2006).



Prepared by:
 Maryland Department of the Environment
 1800 Washington Blvd.
 Baltimore, MD 21230
 Map Production Date: May 2018



MARYLAND
 Larry Hogan, Governor
 Boyd Rutherford, Lt. Governor
 Ben Grumbles, Secretary

Data Sources:
 Watersheds: DNR
 Tidal waters: CBP
 Roads: SHA

Figure 1: Location Map of the Port Tobacco River Watershed in Charles County, Maryland

2.1.1 Land-use

Land-use Methodology

The land-use framework used to develop this TMDL was originally developed for the Chesapeake Bay Program Phase 5.3.2 (CBP P5.3.2) Watershed Model. The CBP P5.3.2 land-use was based on two distinct stages of development.

The first stage consisted of the development of the Chesapeake Bay Watershed Land-Cover Data (CBLCD) series of Geographic Information System (GIS) datasets. These datasets provide a 30-meter resolution raster representation of land-cover in the Chesapeake Bay watershed, based on sixteen Anderson Level two land-cover classes. The CBLCD basemap, representing 2001 conditions, was primarily derived from the Multi-Resolution Land Characteristics (MRLC) Consortium's National Land-Cover Data (NLCD) and the National Oceanic and Atmospheric Administration's (NOAA) Coastal Change Analysis Program's (CCAP) Land-Cover Data. By applying Cross Correlation Analysis to Landsat 5 Thematic Mapper and Landsat 7 Enhanced Thematic Mapper satellite imagery, CBLCD datasets for 1984, 1992, and 2006 were generated from the baseline 2001 dataset. The watershed model documentation, *Chesapeake Bay Phase 5.3 Community Watershed Model* (USEPA 2010b), describes the development of the CBLCD series in more detail. USGS and NOAA also developed an impervious cover dataset from Landsat satellite imagery for the CBLCD basemap, which was used to estimate the percent impervious cover associated with CBLCD developed land-cover classifications.

The second stage consisted of using ancillary information for: 1) the creation of a modified 2006 CBLCD raster dataset, and 2) the subsequent development of the CBP P5.3.2 land-use framework in tabular format. Estimates of the urban footprint in the 2006 CBLCD were extensively modified using supplemental datasets. Navteq street data (secondary and primary roads) and institutional delineations were overlaid with the 2006 CBLCD land-cover and used to reclassify underlying pixels. Certain areas adjacent to the secondary road network were also reclassified based on assumptions developed by USGS researchers, in order to capture residential development (*i.e.*, subdivisions not being picked up by the satellite in the CBLCD). In addition to spatially modifying the 2006 CBLCD, the following datasets were used to supplement the developed land cover data in the final CBP P5.3.2 land-use framework: US Census housing unit data, Maryland Department of Planning (MDP) Property View data, and estimates of impervious coefficients for rural residential properties (determined via a sampling of these properties using aerial photography). This additional information was used to estimate the extent of impervious area in roadways and residential lots. Acres of construction and extractive land-uses were determined independently using a method developed by USGS (Claggett, Irani, and Thompson 2012). Finally, in order to develop accurate agricultural land-use acreages, the CBP P5.3.2 incorporated county level US Agricultural Census data (USDA 1982, 1987, 1992, 1997, 2002). The watershed model documentation, *Chesapeake Bay Phase 5.3 Community Watershed Model* (USEPA 2010b), describes these modifications in more detail.

FINAL

The result of these modifications is that CBP P5.3.2 land-use does not exist in a single GIS coverage; instead, it is only available in a tabular format. The CBP P5.3.2 watershed model is comprised of 30 land-uses. The land-uses are divided into 13 classes with distinct sediment erosion rates. Table 2 lists the CBP P5.3.2 generalized land-uses, detailed land-uses, which are classified by their sediment erosion rates, and the acres of each land-use in the Port Tobacco River watershed. The land-use acreage used to inform this TMDL is based on the CBP P5.3.2 2009 Progress Scenario.

Port Tobacco River Watershed Land-Use Distribution

The land-use distribution of the Port Tobacco River watershed consists primarily of forest (65%), and developed urban land (24%). A detailed summary of the watershed land-use areas is presented in Table 2, and a land-use map is provided in Figure 2.

Table 2: Land-Use Percentage Distribution for the Port Tobacco River Watershed

| General Land Use | Detailed Land-Use | Area (Acres) | Percent (%) |
|-------------------------|---------------------------|---------------------|--------------------|
| Forest | Forest | 18,022 | 64 |
| | Harvested Forest | 181 | 0.6 |
| AFOs | Animal Feeding Operations | 8 | 0 |
| Pasture | Pasture | 593 | 2 |
| Crop | Crop | 2,559 | 9 |
| Nursery | Nursery | 1 | 0 |
| Regulated Urban | Construction | 461 | 2 |
| | Developed | 6,123 | 22 |
| | Extractive | 11 | 0 |
| Water | Non-tidal water | 76 | 0.4 |
| Total | | 28,036 | 100 |

Note: Individual values may not add to totals due to rounding.

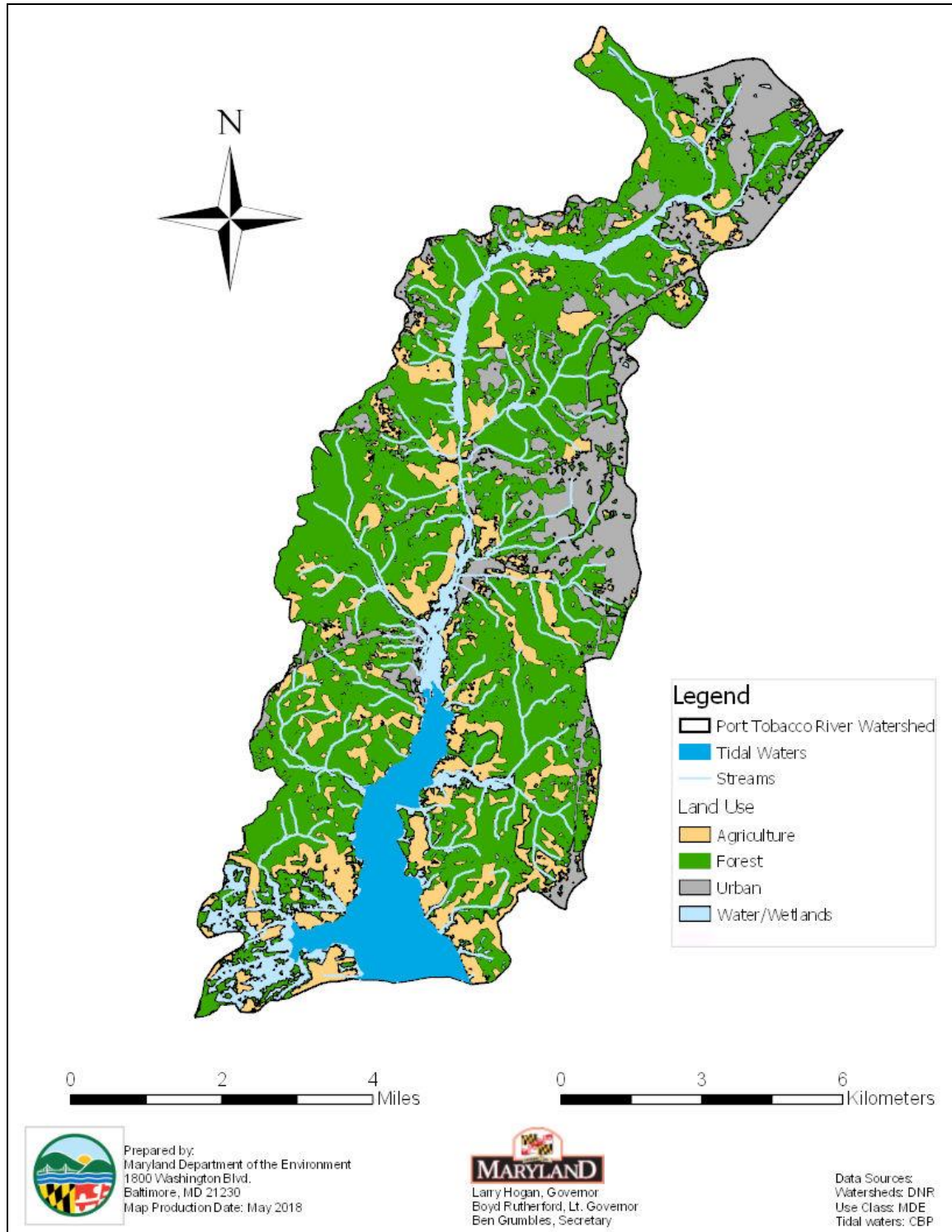


Figure 2: Land-use of the Port Tobacco River Watershed

2.2 Source Assessment

The Port Tobacco River watershed total baseline sediment load consists of nonpoint source loads, and point source loads which can be further divided into National Pollutant Discharge Elimination System (NPDES) Stormwater loads, and Wastewater loads. This section summarizes the methods used to derive each of these distinct source categories.

2.2.1 Nonpoint Source Assessment

Nonpoint source loads account for all sediment loads not covered under a NPDES permit within the Port Tobacco River watershed. In general, these are rainfall driven land-use based loads from agricultural, unregulated urban, and forested lands. This section provides the background and methods for determining the nonpoint source baseline loads generated within the Port Tobacco River watershed (Nonpoint Source BL_{PTR}).

General Load Estimation Methodology

Nonpoint source sediment loads generated within the Port Tobacco River watershed are estimated based on the *edge-of-stream* (EOS) loads from the CBP P5.3.2 watershed model 2009 Progress Scenario. Within the CBP P5.3.2 watershed model, EOS sediment loads are calculated based on the fact that not all of the *edge-of-field* (EOF) sediment load is delivered to the stream or river (some of it is stored on fields down slope, at the foot of hillsides, or in smaller rivers or streams that are not represented in the model). To calculate the actual EOS loads, a *sediment delivery factor* (SDF) (the ratio of sediment reaching a basin outlet compared to the total erosion within the basin) is used. Details of the methods used to calculate sediment load have been documented in the report entitled *Chesapeake Bay Phase 5 Community Watershed Model* (USEPA 2010b). A summary of the methodology is presented in the following sections.

Edge-of-Field Target Erosion Rate Methodology

Edge-of-field erosion can be defined as erosion or sediment loss from any particular land surface. EOF target erosion rates are the values used in the calibration of the CBP5.3.2 model, based on literature values. EOF target erosion rates for agricultural land-uses and forested land-use were based on erosion rates determined by the Natural Resource Inventory (NRI). NRI is a statistical survey of land-use and natural resource conditions conducted by the Natural Resources Conservation Service (NRCS) (USDA 2006). The sampling methodology is explained by Nusser and Goebel (1997).

Estimates of average annual erosion rates for pasture and cropland are available on a county basis at five-year intervals, starting in 1982. Erosion rates for forested land-uses are not available on a county basis from NRI; however, for the purpose of the Chesapeake Bay Program Phase 4.3 (CBP P4.3) watershed model, NRI calculated average annual erosion rates for forested land-use on a watershed basis. These rates were used as targets in the CBP P5.3.2 model.

FINAL

The average value of the 1982 and 1987 surveys was used as the basis for EOF target rates for pasture and cropland. Rates for urban pervious, urban impervious, extractive, and barren land were based on a combination of best professional judgment, literature analysis, and regression analysis. The EOF erosion rates do not reflect best management practices (BMPs) or other soil conservation policies introduced in the wake of the effort to restore the Chesapeake Bay. To compensate for this, BMPs are applied to the modeled EOS loads in the CBP P5.3.2 2009 Progress Scenario. BMP data, representing BMPs in place in 2009, was collected by the Chesapeake Bay Program (CBP), and TSS reduction efficiencies have been estimated by CBP for specific types of BMPs based on peer reviewed studies, data collected by local jurisdictions, and an analysis of available literature values. For further details regarding EOF erosion rates, please see Section 9.2.1 of the *Chesapeake Bay Phase 5 Community Watershed Model* (USEPA 2010b). Table 3 lists EOF erosion rates specific to Charles County, where the Port Tobacco River watershed is located.

Table 3: Charles County Target EOF TSS Loading Rates (ton/acre/yr) by Land-Use

| Land-use | Data Source | Charles County Target EOF TSS loading rate (ton/acre/yr) |
|---------------------------|---|---|
| Forest | NRI (1987) | 0.33 |
| Harvested Forest | Literature values | 3 |
| Nursery | Equivalent to conventional till | 14.41 |
| Pasture | NRI average (1982-1987) | 0.36 |
| Animal Feeding Operations | NRI pasture average (1982-1987) multiplied by 9 | 3.24 |
| Hay | Adjusted NRI average (1982-1987) | 3.69 |
| Conventional Till | Adjusted NRI average (1982 – 1987) | 14.41 |
| Conservation Till | Adjusted NRI average (1982 – 1987) | 8.65 |
| Pervious Urban | Regression Analysis | 0.74 |
| Extractive | Literature values/best professional judgment | 10 |
| Barren (Construction) | Literature values | 23 |
| Impervious Urban | Regression Analysis | 5.18 |

Edge-of-Stream Sediment Loads

A portion of EOF sediment load is delivered to the stream or river. The remaining eroded sediment is stored on fields downslope, at the foot of hillsides, or in smaller rivers or streams that are unrepresented in the model. EOS sediment loads are the loads that enter the modeled river reaches. Modeled river reaches are those with discharges of 100 cubic feet per second (cfs) or greater. Exceptions were made for some river reaches that had useful monitoring data but were less than 100 cfs. EOS sediment loads represent not only the erosion from the land but all of the intervening processes of deposition on hillsides and sediment transport through smaller rivers and streams that are not represented in the Phase 5.3 Model. The influence of the sum of the processes is contained in the estimated sediment delivery factor (SDF), which represents the ratio between sediment transported at a watershed outlet and erosion generated in the watershed. The EOS load for a reach is, therefore, the integration of sediment load scour, transport, storage, and fate from all smaller watersheds and streams unrepresented in the model (USEPA 2010b).

The formula for the EOS load calculation within the CBP P5.3.2 watershed model is as follows:

$$\sum_i^n EOS = Acres_i * EOF_i * SDF_i \quad \text{(Equation 2.1)}$$

where:

n = number of land-use classifications

i = land-use classification

EOS = Edge of stream load, tons per year (ton/yr)

Acres = acreage for land-use i

EOF = Edge-of-field erosion rate for land-use i, ton/acre/yr

SDF = sediment delivery factor for land-use i

2.2.2 Point Source Assessment

A list of active permitted point sources that could contribute to the sediment load in the Port Tobacco River watershed was compiled using best available resources. The types of permits identified include individual municipal water treatment permits, Municipal Separate Storm Sewer Systems (MS4) permits, general industrial NPDES stormwater permits, and the general permit for stormwater discharges from construction sites. The permits can be grouped into two categories: wastewater and stormwater. The wastewater category includes those loads generated by continuous discharge sources whose permits have TSS limits, while other permits that do not meet these conditions are considered *de minimis* in terms of the total sediment load. The stormwater category includes all NPDES regulated stormwater discharges, including construction. The technical memorandum to this document, entitled *Point Sources of Sediment in the Non-Tidal Port Tobacco River Watershed*, identifies all the wastewater permits and NPDES regulated stormwater discharges that contribute to the sediment load in the Port Tobacco River watershed.

FINAL

The baseline sediment loads for the wastewater permits (Wastewater BL_{PTR}) are calculated based on an evaluation of permitted TSS limits and current Discharge Monitoring Report (DMR) data. The stormwater permits identified throughout the Port Tobacco River watershed do not include numeric TSS limits. In the absence of TSS limits, the NPDES regulated stormwater baseline load (NPDES Stormwater BL_{PTR}) is calculated using the CBP P5.3.2 Progress Scenario urban land-use EOS loads (as per Equation 2.1), similar to the approach for nonpoint Source (NPS) loads outlined in Section 2.2.1. The technical memorandum to this document entitled *Point Sources of Sediment in the Non-Tidal Port Tobacco River Watershed* provides detailed information regarding the calculation of the Port Tobacco River watershed Wastewater BL_{PTR} and NPDES Stormwater BL_{PTR} .

2.2.3 Summary of Baseline Loads

Table 4 summarizes the Port Tobacco River Watershed baseline sediment load, reported in ton/yr and presented in terms of Nonpoint Source Baseline Loads and NPDES Stormwater and Wastewater Baseline Loads.

Table 4: Port Tobacco River Watershed Baseline Sediment Loads (ton/yr)

| Total Baseline Load (ton/yr) | = | Nonpoint Source BL_{PTR} | + | NPDES Stormwater BL_{PTR} | + | Wastewater BL_{PTR} |
|---|----------|--|----------|---|----------|---|
| 1,780 | = | 1,188 | + | 588 | + | 4 |

Note: Baseline loads are estimated using CBP 5.3.2, 2009 Progress Scenario

Table 5 presents a breakdown of Port Tobacco River Watershed Total Baseline Sediment Load, detailing loads per land-use or other source category. The largest portion of the sediment load is from cropland.

Table 5: Detailed Baseline Sediment Loads Within the Port Tobacco River Watershed^{1,2}

| General Land Use | Detailed Land-Use | Tons | Percent of Total (%) |
|-------------------------|---------------------------|--------------|-----------------------------|
| Forest | Forest | 244 | 14 |
| | Harvested Forest | 8 | 0.5 |
| AFOs | Animal Feeding Operations | 1.3 | 0.1 |
| Pasture | Pasture | 7 | 0.4 |
| Crop | Crop | 927 | 52 |
| Nursery | Nursery | 0.2 | 0 |
| Regulated Urban | Construction | 225 | 13 |
| | Developed | 359 | 20 |
| | Extractive | 4 | 0 |
| Point Sources | Industrial Point Sources | 0 | 0 |
| | Municipal Point Sources | 4.3 | 0.2 |
| Total | | 1,780 | 100.0 |

¹ Individual values may not add to total load due to rounding.

² Baseline sediment load values are based on CBP 5.3.2 2009 Progress Scenario

2.3 Water Quality Characterization

The Port Tobacco River watershed was originally listed on Maryland's 2008 Integrated Report as impaired for impacts to biological communities (MDE 2008). To refine the listing for impacts to biological communities, Maryland conducted a stressor identification analysis. Details of this analysis are presented below and in the document entitled, *Watershed Report for Biological Impairment of the Port Tobacco River Watershed, Charles County, Maryland Biological Stressor Identification Analysis Results and Interpretation*.

Currently in Maryland, there are no specific numeric criteria for TSS. Therefore, to determine whether aquatic life is impacted by elevated sediment loads, MDE's BSID methodology was applied. The primary goal of the BSID analysis is to identify the most probable cause(s) for observed biological impairments throughout MD's 8-digit watersheds (MDE 2009).

The BSID analysis applies a case-control, risk-based, weight-of-evidence approach to identify potential causes of biological impairment. The risk-based approach estimates the strength of association between various stressors and an impaired biological community. The BSID analysis then identifies individual stressors as probable or unlikely causes of the poor biological conditions within a given watershed, and subsequently reviews ecological plausibility. Finally, the analysis concludes whether or not these individual stressors or groups of stressors are contributing to the impairment (MDE 2009).

FINAL

The primary dataset for BSID analysis includes Maryland Department of Natural Resources (MDDNR) Maryland Biological Stream Survey (MBSS) Round 2 and Round 3 data (collected between 2000-2009) because it provides a broad spectrum of paired data variables, which allow for a more comprehensive stressor analysis. MDDNR-MBSS Round 1 can also be used if there is limited Round 2 and 3 data. The MBSS is a robust statewide probability-based sampling survey for assessing the biological conditions of 1st through 4th order, non-tidal streams (Klauda et al. 1998; Roth et al. 2005). It uses a fixed length (75 meter) randomly selected stream segment for collecting site level information within a primary sampling unit (PSU), also defined as a watershed. The randomly selected stream segments, from which field data are collected, are selected using either stratified random sampling with proportional allocation, or simple random sampling (Cochran 1977). The random sample design allows for unbiased estimates of overall watershed conditions. Thus, the dataset facilitated case-control analyses because: 1) in-stream biological data are paired with chemical, physical, and land-use data variables that could be identified as possible stressors; and 2) it uses a probabilistic statewide monitoring design.

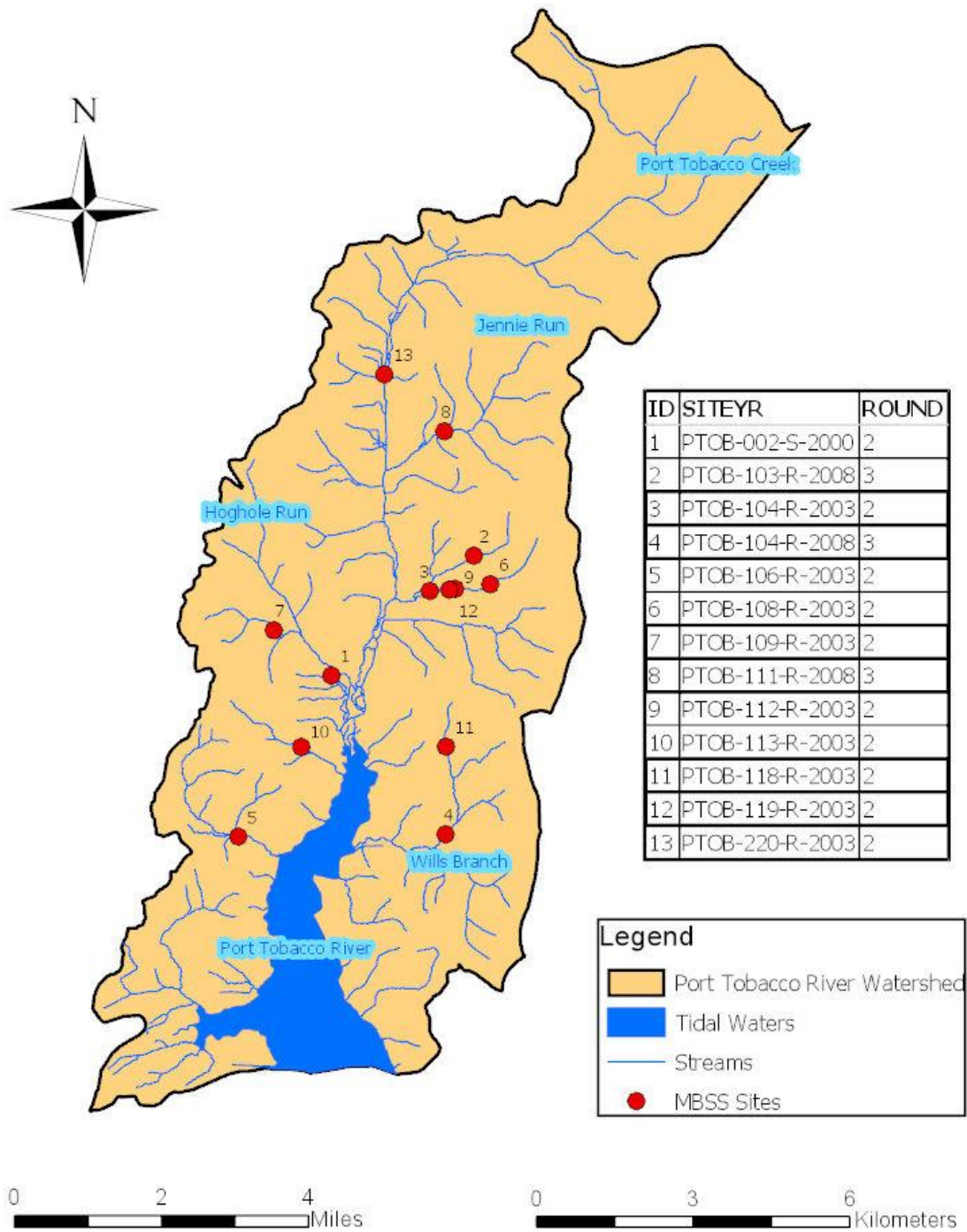
The BSID analysis combines the individual stressors (physical, chemical and biological variables) into three generalized parameter groups in order to assess how the resulting impacts of these stressors can alter the biological community and structure. The three generalized parameter groups include: sediment, habitat, and water chemistry. Identification of a sediment stressor as contributing to the biological impairment is based on the results of the individual stressor associations within the sediment parameter grouping, which reveal the effects of sediment related impacts on stream biota (MDE 2009).

Port Tobacco River Watershed Monitoring Stations

A total of 13 water quality monitoring stations were used to characterize the Port Tobacco River watershed for this TMDL. Both the biological assessment and the BSID were based on the combined results of MBSS Round 2 and Round 3 data, which includes 13 stations. The Port Tobacco River watershed dataset does not include and Round 1 MBSS stations. All stations are listed in Table 6 and presented in Figure 3.

Table 6: Monitoring Stations in the Port Tobacco River Watershed

| Site Number-Year | Sponsor | Site Type | Location | Latitude (decimal degrees) | Longitude (decimal degrees) |
|-------------------------|----------------|------------------|--------------------|---|--|
| PTOB-002-S-2000 | DNR | MBSS Round 2 | Hoghole Run | 38.5110 | -77.0290 |
| PTOB-103-R-2008 | DNR | MBSS Round 3 | Port Tobacco Creek | 38.5317 | - 76.9978 |
| PTOB-104-R-2003 | DNR | MBSS Round 2 | Port Tobacco Creek | 38.5256 | - 77.0074 |
| PTOB-104-R-2008 | DNR | MBSS Round 3 | Wills Branch | 38.4837 | - 77.0040 |
| PTOB-106-R-2003 | DNR | MBSS Round 2 | Port Tobacco River | 38.4833 | - 77.0495 |
| PTOB-108-R-2003 | DNR | MBSS Round 2 | Port Tobacco Creek | 38.5268 | - 76.9942 |
| PTOB-109-R-2003 | DNR | MBSS Round 2 | Hoghole Run | 38.5188 | - 77.0417 |
| PTOB-111-R-2008 | DNR | MBSS Round 3 | Jennie Run | 38.5532 | - 77.0042 |
| PTOB-112-R-2003 | DNR | MBSS Round 2 | Port Tobacco Creek | 38.5260 | - 77.0019 |
| PTOB-113-R-2003 | DNR | MBSS Round 2 | Port Tobacco River | 38.4987 | - 77.0357 |
| PTOB-118-R-2003 | DNR | MBSS Round 2 | Wills Branch | 38.4988 | - 77.0039 |
| PTOB-119-R-2003 | DNR | MBSS Round 2 | Port Tobacco Creek | 38.5259 | - 77.0031 |
| PTOB-220-R-2003 | DNR | MBSS Round 2 | Port Tobacco Creek | 38.5630 | -77.2983 |



Prepared by:
 Maryland Department of the Environment
 1800 Washington Blvd.
 Baltimore, MD 21230
 Map Production Date: May 2018



Larry Hogan, Governor
 Boyd Rutherford, Lt. Governor
 Ben Grumbles, Secretary

Data Sources:
 Watersheds: DNR
 Tidal waters: CBP
 Streams: MDE
 MBSS Sites: DNR

Figure 3: Monitoring Stations in the Port Tobacco River Watershed

2.4 Water Quality Impairment

The Maryland Surface Water Use Designation in the Code of Maryland Regulations (COMAR) for the Port Tobacco River watershed's nontidal tributaries are designated as Use Class I - *water contact recreation, and protection of nontidal warmwater aquatic life*. Tidal tributaries and the Port Tobacco River mainstem are designated Use Class II - *support of estuarine and marine aquatic life and shellfish harvesting* (COMAR 2016a, b, c). A map of the Designated Use Classes is provided in Figure 4.

The water quality impairment of the Port Tobacco River watershed addressed by this TMDL is caused, in part, by an elevated sediment load that is beyond the level that the watershed can sustain; thereby causing sediment related impacts to aquatic life. Assessment of aquatic life is based on Benthic Index of Biotic Integrity (BIBI) and Fish Index of Biotic Integrity (FIBI) scores, as demonstrated via the BSID analysis for the watershed.

The Port Tobacco River watershed was originally listed on Maryland's 2008 Integrated Report as impaired for impacts to biological communities. Six of the thirteen stations were assessed as having BIBI and/or FIBI scores significantly lower than 3.0 (on a scale of 1 to 5) (MDE 2008). This equates to 46% of the stream miles in the watershed as not supporting aquatic life. See Figure 3 and Table 6 for station locations and information.

The results of the BSID analysis for the Port Tobacco River watershed are presented in a report entitled *Watershed Report for Biological Impairment of the Non-Tidal Port Tobacco River Watershed, Charles County, Maryland Biological Stressor Identification Analysis Results and Interpretation*. The report states that the degradation of biological communities in the Port Tobacco River watershed is strongly associated with altered hydrology and elevated levels of sediments, inorganic pollutants and nutrients (MDE 2015). Overall, stressors within the sediment parameter grouping were identified as having a statistically significant association with impaired biological communities at approximately 51% of the sites with BIBI and/or FIBI scores significantly less than 3.0 throughout the watershed (MDE 2015). Therefore, since sediment is identified as a stressor to the biological communities in the Port Tobacco River watershed, the watershed has been listed as impaired (Category 5) by sediment in the Integrated Report, and a TMDL is required.

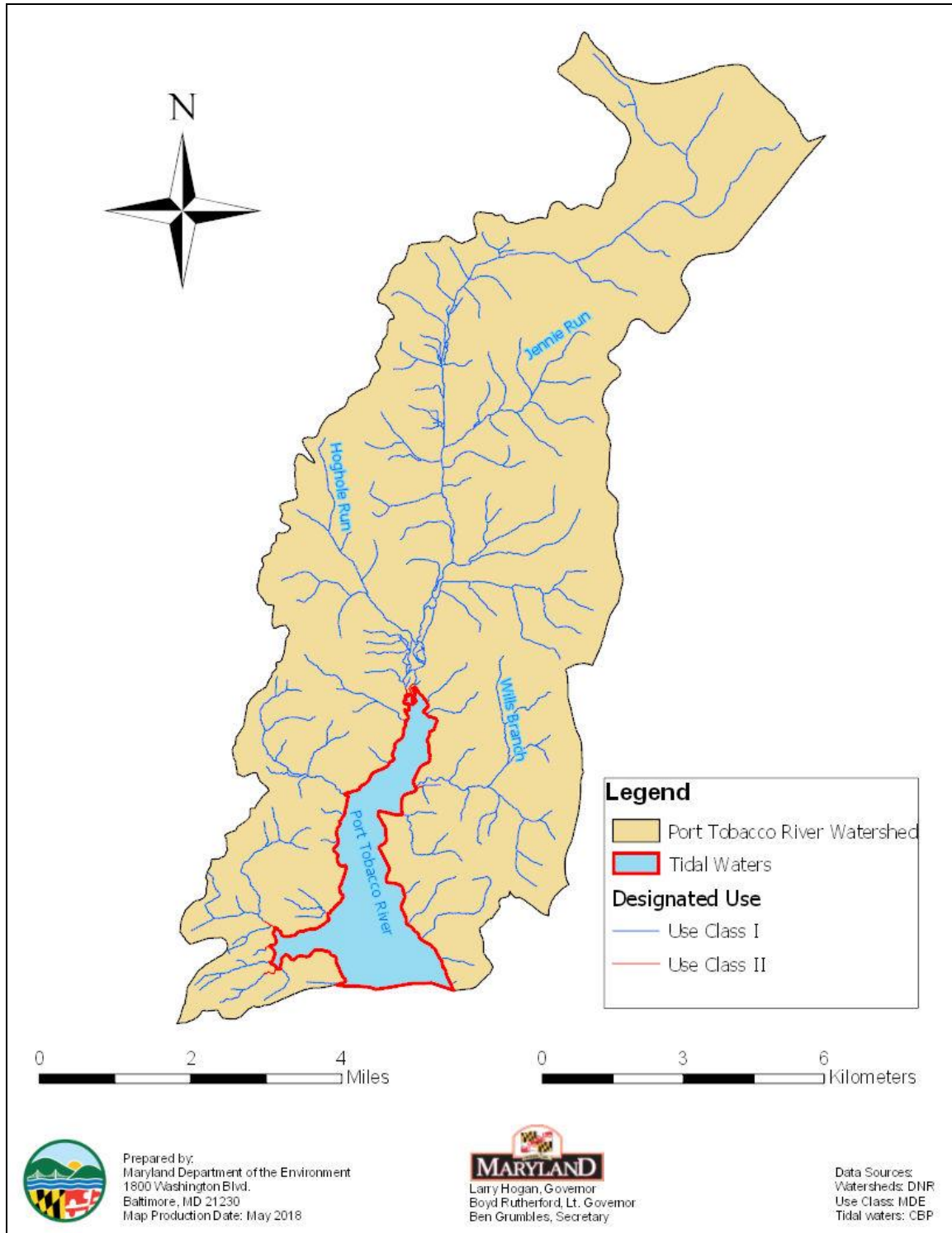


Figure 4: Designated Use Classes of the Port Tobacco River Watershed in Charles County, Maryland

3.0 TARGETED WATER QUALITY GOAL

The objective of the sediment TMDL established herein is to reduce sediment loads, and their detrimental effects on aquatic life in the Port Tobacco River watershed, to levels that support a Use Class I designation for the watershed. Excessive sediment has been identified by the USEPA as the leading cause of impairment of our nation's waters, and as contributing to the decline of populations of aquatic life in North America (USEPA 2003a). Sediment in streams may reduce visibility, preventing fish from seeing their prey, and may clog gills and filter feeding mechanisms of fish and benthic (bottom-dwelling) organisms. Excessive deposition of sediment on streambeds may bury eggs or larvae of fish and benthic macroinvertebrates, or degrade habitat by clogging the interstitial spaces between sand and gravel particles. Excessive sediment can also create hazards for recreation due to low visibility and the possibility of unseen objects.

The CWA requires TMDLs to be protective of all the designated uses applicable to a particular waterbody. The primary focus of this TMDL is the designated use of protection of aquatic life because the Integrated Report listing was based on a biological assessment of the watershed. However, the required reductions are expected to protect all designated uses of the watershed, including water contact recreation. Aquatic life is more sensitive to sediment impacts than recreation because aquatic life impacts result from continuous exposure that can affect respiration and propagation. Recreation, on the other hand, is sporadic and sediment is unlikely to pose a human health risk due to dermal contact or minimal ingestion that would occur during recreation. Additionally, EPA's *Framework for Developing Suspended and Bedded Sediments (SABS) Water Quality Criteria* states:

... where multiple designated uses (such as aquatic life and irrigation) overlap in a waterbody or on a specific segment or portion of the waterbody, SABS criteria established to protect the aquatic life use most likely will be stringent enough to protect all other uses except perhaps drinking water uses. (USEPA 2006)

Reductions in sediment loads are expected to result from decreased watershed erosion, which will then lead to improved benthic and fish habitat conditions. Specifically, sediment load reductions are expected to result in an increase in diversity of benthic species present, an increase in the availability and suitability of benthic habitat, a decrease in the deposition of fine sediment (fines), and improved stream habitat diversity, all of which will result in improved water quality.

This TMDL will not completely resolve the impairment to biological communities within the watershed. Since the BSID watershed analysis also identifies inorganic pollutants as impacting the biological conditions, additional TMDLs may be needed to completely address the impacts to biological communities. This impairment to aquatic life will only be fully addressed when all impairing substances identified as impacting biological communities in the watershed are reduced to levels that will enable planning and management efforts to meet water quality standards; forthcoming TMDLs will support the reduction of these substances (MDE 2009, 2012b).

4.0 TOTAL MAXIMUM DAILY LOADS AND SOURCE ALLOCATION

4.1 Overview

This section describes how the sediment TMDL and the corresponding allocations were developed for the Port Tobacco River watershed.

4.2 Analysis Framework

Since there are no specific numeric criteria in Maryland that quantify the impact of sediment on the aquatic life of non-tidal stream systems, a reference watershed approach was used to establish the TMDL. In order to use a reference watershed approach, sediment loads must be estimated using a watershed model. For this analysis, the CBP P5.3.2 model was used to calculate the sediment loads used in the reference watershed approach.

Watershed Model

The CBP P5.3.2 watershed model was chosen to estimate the sediment loads for the Port Tobacco River watershed TMDL and the loads were expressed as EOS sediment loads. The spatial domain of the CBP P5.3.2 watershed model segmentation aggregates to the MD 8-digit watersheds, which is with the scale of the impairment listing. The nonpoint source baseline sediment loads generated within the Port Tobacco River watershed are based on the EOS loads from the CBP P5.3.2 watershed model 2009 Progress Scenario. CBP P5.3.2 Progress Scenario EOS loads are calculated as the sum of individual land-use EOS loads within the watershed and represent a long-term average loading rate. Individual land-use EOS loads are calculated within the CBP P5.3.2 watershed model as a product of the land-use area, land-use target EOF loading rate, and loss from the EOF to the main channel. BMP data and reduction efficiencies are then applied to produce the final EOS loads. The loss from the EOF to the main channel is the *sediment delivery factor* and is defined as the ratio of the sediment load reaching a basin outlet to the total erosion within the basin. A *sediment delivery factor* is estimated for each land-use type based on the proximity of the land-use to the main channel. Thus, as the distance to the main channel increases, more sediment is stored within the watershed (i.e., *sediment delivery factor* decreases). Details of the data sources for the unit loading rates can be found in Section 2.2 of this report.

Reference Watershed Approach

In order to quantify the impact of sediment on the aquatic life of non-tidal stream systems, a reference watershed TMDL approach was used. Reference watersheds are those watersheds that are identified as supporting aquatic life, based on Maryland's biological assessment methodology. The biological assessment methodology assesses biological impairment at the watershed scale based on the percentage of MBSS monitoring stations, translated into watershed stream miles, that have BIBI and/or FIBI scores lower than the Minimum Allowable IBI Limit (MAL). The MAL represents the threshold under which a watershed is listed as impaired for biology and is calculated based on the average annual allowable IBI value of 3.0 (on a scale of 1 to 5), the

FINAL

coefficient of variation of annual sentinel site results, and an assumed normal distribution. It accounts for annual variability and helps to avoid classification errors (i.e., false positives) when assessing for biological impairments (Roth et al. 1998, 2000; Stribling et al. 1998). For a full description of the selection of reference watersheds, please see *A Methodology for Addressing Sediment Impairments in Maryland's Nontidal Watersheds* (MDE 2006).

Comparison of sediment loads from impaired watersheds to loads from reference watersheds requires that the watersheds be similar in physical and hydrological characteristics. For the establishment of this specific TMDL, watersheds were selected from the nontidal western shore Coastal Plain region since the Port Tobacco River watershed is within this geologic province (see Section 2.1). See Appendix A for the list of reference watersheds. The same methodology as described in MDE 2006 for the selection of the Highland and Piedmont reference watersheds was used to select the western shore Coastal Plain reference watersheds. Furthermore, all subsequent methodologies used to establish the TMDL end point, based on these reference watersheds, are exactly the same as those described in MDE 2006.

To further reduce the effect of the variability within the western shore Coastal Plain physiographic eco-region (i.e., soils, slope, etc.), the watershed sediment loads were then normalized using a constant background condition, the all forested watershed condition of the impaired watershed. This new normalized term, defined as the *forest normalized sediment load* (Y_n), represents how many times greater the current watershed sediment load is than the *all forested sediment load* (y_{for}). The y_{for} is a modeled simulation of what the sediment load would be if the impaired watershed were in its natural all forested state, instead of its current mixed land use. It is calculated using the CBP P5.3.2 model. The *forest normalized sediment load* for this TMDL is calculated as the current watershed sediment load divided by the *all forested sediment load*. The equation for the *forest normalized sediment load* is as follows:

$$Y_n = \frac{y_{ws}}{y_{for}} \quad \text{(Equation 4.1)}$$

Where:

Y_n = forest normalized sediment load

y_{ws} = current watershed sediment load (ton/yr)

y_{for} = all forested sediment load (ton/yr)

FINAL

Seven reference watersheds were identified in the western shore of the Coastal physiographic regions. Reference watershed *forest normalized sediment loads* were calculated using CBP P5.3.2 watershed model 2009 Progress Scenario EOS loads. The median and 75th percentile of the reference watershed *forest normalized sediment loads* were calculated and found to be 3.9 and 4.5 respectively¹. The median value of 3.9 was used as an environmentally conservative approach for establishing the sediment loading threshold for the TMDL (see Appendix A for more details).

The *forest normalized sediment load* for the Port Tobacco River watershed, estimated as 4.7, was calculated using CBP P5.3.2 2009 Progress Scenario EOS loads, to best represent current conditions (See Calculation 4.1). Comparing the Port Tobacco River watershed *forest normalized sediment load* of 4.7 to the *forest normalized reference sediment load* (also referred to as the *sediment loading threshold*) of 3.9 demonstrates that the watershed exceeds the *sediment loading threshold*, indicating that it is receiving loads above the maximum allowable load that it can sustain and still meet water quality standards.

$$Y_n = \frac{y_{ws}}{y_{for}} = \frac{1,780 \text{ ton/yr}}{381 \text{ ton/yr}} = 4.7$$

(Calculation 4.1)

4.3 Scenario Descriptions and Results

The following analyses compare baseline conditions in the watershed (under which water quality problems exist) with potential future conditions, which project the water quality response to various simulated sediment load reductions. The analyses are grouped according to baseline conditions and future conditions associated with TMDLs.

Baseline Conditions

The baseline conditions are intended to provide a point of reference by which to compare the future scenario that simulates conditions of a TMDL. Baseline loads are calculated for nonpoint and point source loads. Point source loads can be subdivided into two categories, wastewater and stormwater.

The Port Tobacco River watershed baseline nonpoint source sediment loads are calculated using the land-use and EOS sediment loading rates from the CBP P5.3.2 2009 Progress Scenario. The 2009 Progress Scenario was chosen because it is used as the baseline year in the Chesapeake Bay TMDL. The 2009 Progress Scenario represents 2009 land-use and BMP implementation simulated using precipitation and other meteorological inputs from the period 1990-2000 to represent variable hydrological

¹ The 75th percentile value of reference condition streams was recommended by EPA to be used in establishing numerical criteria (MDE 2006). The median was found, for the sediment reference watersheds, to be approximately equivalent to other more complex statistical analyses and was used for ease of calculation (MDE 2009b). Both of these values ensure that the selected threshold will represent the reference group values, with the median being more conservative (lower).

FINAL

conditions, thereby addressing annual changes in hydrology and capturing wet, average and dry years. The period 1991-2000 is the hydrological simulation period for the Chesapeake Bay TMDL.

The baseline wastewater point source sediment loads are estimated based on the existing permit information. Details of these loading source estimates can be found in Section 2.2 and the technical memorandum to this document entitled *Point Sources of Sediment in the Port Tobacco River Watershed*. The baseline stormwater point source sediment loads are based on CBP 5.3.2 loading rates, specifically those for urban land use.

TMDL Conditions

The TMDL scenario simulates conditions under which sediment loads have been reduced to levels that protect aquatic life. In the TMDL calculation, the allowable load for the impaired watershed is calculated as the product of the *sediment loading threshold* (determined from watersheds with a healthy biological community) and the Port Tobacco River watershed *all forested sediment load* (see Section 4.2). The resulting load is considered the maximum allowable load the watershed can sustain and support aquatic life.

The TMDL loading and associated reductions are averaged at the watershed scale, however, it is important to recognize that some subwatersheds may require higher reductions than others, depending on the distribution of the land-use.

The formula for estimating the TMDL is as follows:

$$TMDL = \sum_{i=1}^n Yn_{ref} \cdot y_{for_i} \quad (\text{Equation 4.2})$$

Where:

TMDL = allowable load for impaired watershed (ton/yr)

Yn_{ref} = sediment loading threshold = forest normalized reference sediment load

y_{for_i} = all forested sediment load for CBP P5.3.2 model segment i (ton/yr)

i = individual CBP P5.3.2 model segment

n = number of CBP P5.3.2 model segments in watershed

4.4 Critical Condition and Seasonality

USEPA's regulations require TMDLs to take into account seasonality and critical conditions for stream flow, loading, and water quality parameters (CFR 2016b). The intent of this requirement is to ensure that the water quality of the waterbody is protected during times when it is most vulnerable. The biological monitoring data used to determine the reference watersheds reflect the impacts of stressors (i.e., sediment impacts to stream biota) over the course of time and therefore depict an average stream condition (i.e., captures all high and low flow events). Since the TMDL endpoint is based on the median of forest normalized loads from watersheds assessed as having good biological conditions (i.e., passing Maryland's biological assessment), by the nature of the biological data described above, it must inherently include the critical conditions of the reference watersheds. Therefore, since the TMDL reduces the watershed sediment load to a level compatible with that of the reference watersheds, critical conditions are inherently addressed.

Seasonality is captured in two components. First, it is implicitly included through the use of the biological monitoring data as this data reflects the impacts of stressors over time, as described above. Second, the MBSS dataset included benthic sampling in the spring (March 1 - April 30) and fish sampling in the summer (June 1 - September 30). Benthic sampling in the spring allows for the most accurate assessment of the benthic population, and therefore provides an excellent means of assessing the anthropogenic effects of sediment impacts on the benthic community. Fish sampling is conducted in the summer when low flow conditions significantly limit the physical habitat of the fish community, and it is therefore most reflective of the effects of anthropogenic stressors as well. Moreover, the sediment loading rates used in the TMDL were determined using the CBP P5.3.2 model which is a continuous simulation model with a simulation period 1991-2000, based on Hydrological Simulation Program Fortran (HSPF) model, thereby addressing annual changes in hydrology and capturing wet, average, and dry years.

4.5 TMDL Loading Caps

This section presents the Port Tobacco River watershed average annual sediment TMDL. This load is considered the maximum allowable long-term average annual load the watershed can sustain and support aquatic life.

The long-term average annual TMDL was calculated for the Port Tobacco River watershed based on Equation 4.2 and set at a load 3.9 times the all forested condition of the watershed. In order to attain the TMDL loading cap calculated for the watershed, reductions were applied to the predominant sediment sources, independent of jurisdiction. Sediment reductions are also required in the Port Tobacco River watershed to meet the allocations assigned under the 2010 Chesapeake Bay TMDL for sediment in the Lower Potomac River Oligohaline and the Port Tobacco River Oligohaline. To ensure consistency with the Bay TMDL, and therefore efficiency in the reduction of sediment loads, reductions will be applied to the same sediment sources identified in Maryland's Watershed Implementation Plans (WIPs) for the Bay TMDLs, as applicable in the

FINAL

watershed. These include: (1) regulated developed land; (2) conventional till crops, conservation till crops, hay, and pasture; (3) harvested forest; (4) unregulated animal feeding operations and concentrated animal feeding operations (CAFOs); and (5) industrial process sources and municipal wastewater treatment plants. In this watershed, reductions were applied to regulated developed land and cropland. Forest land is not assigned reductions because it is considered the most natural condition in the watershed.

The Port Tobacco River Watershed Baseline Load and TMDL are presented in Table 7.

Table 7: Port Tobacco River Watershed Baseline Load and TMDL

| Baseline Load (ton/yr) | TMDL (ton/yr) | Total Reduction (%) |
|-------------------------------|----------------------|----------------------------|
| 1,780 | 1,486 | 17 |

4.6 Load Allocations Between Point and Nonpoint Sources

Per USEPA regulation, all TMDLs need to be presented as a sum of Wasteload Allocations (WLAs) for point sources and Load Allocations (LAs) for nonpoint source loads generated within the assessment unit, accounting for natural background, tributary, and adjacent segment loads (CFR 2016a). The State reserves the right to allocate the TMDL among different sources in any manner that protects aquatic life from sediment related impacts.

Load Allocation

Individual LAs for each nonpoint land-use sector were calculated using the allocation methodology in the *Maryland's Phase I Watershed Implementation Plan for the Chesapeake Bay Total Maximum Daily Load* (MD Phase I WIP), which was designed to be equitable, effective, and consistent with water quality standards (MDE 2010). The allocations were calculated by applying equal reductions to the *reducible* loads of all sectors. The *reducible* load is defined as the difference between the No Action (NA) scenario and the "Everything, Everyone, Everywhere" (E3) scenario. The NA scenario represents current land-uses without any sediment controls applied, while the E3 scenario represents the application of all possible BMPs and control technologies to current land-use. MD Phase I WIP has more detailed information regarding the calculation of the LA (MDE 2010).

In this watershed, crop land was identified as the only predominant nonpoint source of sediment and requires reductions. Sediment loads from urban lands are regulated under National Pollutant Discharge Elimination System (NPDES) permits and are considered point source loads that must be included in the Waste Load Allocation (WLA) portion of a TMDL (US EPA 2002). All other land uses individually contributed less than 1% of the total load and were not reduced, as they would produce no discernible reductions. Forest is not assigned reductions, as it represents the most natural condition in the watershed.

In this document, the LA for the Port Tobacco River watershed is expressed as one aggregate value for all nonpoint sources. For more detailed information regarding the Port Tobacco River watershed TMDL nonpoint source LA, please see the technical memorandum to this document entitled *Nonpoint Sources of Sediment in the Port Tobacco River Watershed*.

A summary of the baseline and load allocation for nonpoint sources is presented in Table 8. The percent reduction shown in Table 8 does not represent the reduction applied to reducible loads, but the required reduction between the allocation and the baseline load.

Wasteload Allocation

The WLA of the Port Tobacco River watershed is allocated to two permitted source categories, the Wastewater WLA and the Stormwater WLA. The categories are described below.

FINAL

Wastewater WLA

Wastewater permits with specific TSS limits and corresponding flow information are assigned a WLA. In this case, detailed information is available to accurately estimate the WLA. If specific TSS limits are not explicitly stated in the wastewater permit, then TSS loads are expected to be *de minimis*. If loads are *de minimis*, they pose little or no risk to the aquatic environment and they are not a significant source.

Wastewater permits with specific TSS limits include:

- Individual industrial facilities
- Individual municipal facilities
- General mineral mining facilities

There are three municipal wastewater permits with explicit TSS limits in the non-tidal Port Tobacco River watershed that contribute to the watershed sediment load. The total estimated TSS load from the wastewater sources is based on current, average permit limits and is equal to 4 ton/yr. There are no industrial or general mining facilities with permits regulating their discharge of sediment in the watershed. For more detailed information on the wastewater permits, please see the technical memorandum entitled *Point Sources of Sediment in the Port Tobacco River Watershed*.

Stormwater WLA

Per USEPA requirements, “stormwater discharges that are regulated under Phase I or Phase II of the NPDES stormwater program are point sources that must be included in the WLA portion of a TMDL” (USEPA 2002). Phase I and II permits can include the following types of discharges:

- Small, medium, and large municipal separate storm sewer systems (MS4s)
 - these can be owned by local jurisdictions, municipalities, and state and federal entities (e.g., departments of transportation, hospitals, military bases),
- Industrial facilities permitted for stormwater discharges, and
- Small and large construction sites
- General mineral mining facilities with no TSS limits

USEPA currently recommends that when information allows, WLAs for NPDES-regulated stormwater discharges be apportioned to different dischargers based on identifiable categories (e.g., separate WLAs for MS4 and industrial stormwater discharges). These categories should be defined as narrowly as available information allows (e.g., for municipalities, separate WLAs for each municipality and for industrial sources, separate WLAs for different types of industrial stormwater sources or dischargers). In general, states are encouraged to disaggregate the WLA, to facilitate implementation (USEPA 2014).

FINAL

The Port Tobacco River NPDES Stormwater WLA is based on reductions applied to the sediment load from the portion of the urban land-use in the watershed associated with the applicable NPDES regulated stormwater permits. The reduction methodology is described above in the Load Allocation section. Some NPDES Stormwater sources may also be subject to controls from other management programs. The Port Tobacco River NPDES Stormwater WLA requires an overall reduction of 21% (see Table 8).

As stormwater assessment and/or other program monitoring efforts result in a more refined source assessment, MDE reserves the right to revise the current NPDES Stormwater WLA provided the revisions protect aquatic life from sediment related impacts.

For more information on the methods used to calculate the NPDES regulated stormwater baseline sediment load, see Section 2.2.2. For a detailed list of all of the NPDES regulated stormwater discharges within the watershed and information regarding the NPDES stormwater WLA distribution amongst these discharges, please see the technical memorandum to this document entitled *Point Sources of Sediment in the Port Tobacco River Watershed*.

Table 8: Port Tobacco River Watershed TMDL Reductions by Source Category

| | Baseline Load Source Categories | | Baseline Load (ton/yr) | TMDL Components | TMDL (ton/yr) | Reduction (%) |
|---|---------------------------------|------------------|------------------------|-----------------|---------------|---------------|
| Port Tobacco River Watershed Contribution | Nonpoint Source | | 1,188 | LA | 1,016 | 14 |
| | Point Source | NPDES Stormwater | 588 | WLA | 466 | 21 |
| | | Wastewater | 4 | | 4 | 0 |
| Total | | | 1,780 | | 1,486 | 17 |

4.7 Margin of Safety

All TMDLs must include a margin of safety (MOS) to account for any lack of knowledge and uncertainty concerning the relationship between loads and water quality (CFR 2016b). The MOS shall also account for any rounding errors generated in the various calculations used in the development of the TMDL. This TMDL was developed using an environmentally conservative approach that implicitly incorporates an MOS. Specifically, as was described in Section 4.2, the reference watershed forest normalized EOS loads were chosen in a conservative manner. Analysis of the reference group *forest*

FINAL

normalized sediment loads indicates that the 75th percentile of the reference watersheds is a value of 4.5 and that the median value 3.9. Achieving a 75th percentile forest normalized sediment load would assure that the watershed falls within the range of unimpaired watersheds. However, for this analysis, the *forest normalized reference sediment load* (also referred to as the *sediment loading threshold*) was set at the median value of 3.9 (MDE 2006). Use of the median as the threshold creates an environmentally conservative estimate, and results in an implicit MOS.

4.8 Summary of Total Maximum Daily Loads

The average annual non-tidal Port Tobacco River watershed TMDL is summarized in Table 9. The TMDL is the sum of the LA, NPDES Stormwater WLA, Wastewater WLA, and MOS. The attainment of water quality standards within the non-tidal Port Tobacco River watershed can only be achieved by meeting the average annual TMDL of sediment specified for the watershed within this report. The Maximum Daily Load (MDL) is summarized in Table 10 (See Appendix B for more details).

Table 9: Port Tobacco River Watershed Average Annual TMDL of Sediment (ton/yr)

| TMDL (ton/yr) | = | LA_{PTR} | + | NPDES Stormwater WLA_{PTR} | + | Wastewater WLA_{PTR} | + | MOS |
|----------------------|---|-------------------------|---|---|---|---|---|------------|
| 1,486 | = | 1,016 | + | 466 | + | 4 | + | Implicit |

Table 10: Port Tobacco River Watershed Maximum Daily Load of Sediment (ton/day)

| MDL (ton/day) | = | LA_{PTR} | + | NPDES Stormwater WLA_{PTR} | + | Wastewater WLA_{PTR} | + | MOS |
|----------------------|---|-------------------------|---|---|---|---|---|------------|
| 6 | = | 4 | + | 2 | + | 0.02 | + | Implicit |

Note: Individual values may not add to totals due to rounding

FINAL

5.0 ASSURANCE OF IMPLEMENTATION

Section 303(d) of the CWA and current USEPA regulations require reasonable assurance that the sediment TMDL can and will be implemented (CFR 2016b). This section provides the basis for reasonable assurance that the sediment TMDL in the Port Tobacco River watershed will be achieved and maintained.

While this TMDL establishes a sediment loading target for the watershed, watershed managers and other stakeholders should always remain cognizant that the endpoint of this TMDL, and hence the definition of its successful implementation, is based on in-stream biological health. Load reductions are critical to tracking this effort, since the TMDL target is defined as the point where sediment loads match those seen in reference watersheds, but the watershed cannot be delisted or classified as meeting water quality standards until it is demonstrated that the biological health of the stream system is no longer impaired by sediment. In planning any implementation efforts related to this TMDL, careful consideration should be given both to the sediment load reductions, and to the direct potential impacts on biological communities.

2010 Chesapeake Bay TMDLs

Implementation of the TMDL for sediment in the Port Tobacco River watershed is expected to occur in parallel with implementation efforts for the 2010 Chesapeake Bay TMDLs for nutrients and sediment in the Port Tobacco River Mesohaline and the Rhode River Mesohaline. While the objectives of the two efforts differ, with the 2010 Bay TMDLs focused on tidal water quality and this TMDL targeting biological integrity in non-tidal streams, many of the sediment reductions achieved through implementation activities should result in progress toward both goals.

The strategies for implementing the 2010 Bay TMDLs are described in Maryland's Phase I WIP (MDE 2010) and Phase II WIP (MDE 2012b). The WIPs are the centerpieces of the State's "reasonable assurance" of implementation for the 2010 Bay TMDLs, and the strategies encompass a host of BMPs, pollution controls and other actions for all source sectors that cumulatively will result in meeting the State's 2025 targets, as verified by the Chesapeake Bay Water Quality Sediment Transport Model. In particular, the implementation of practices to reduce sediment loadings from the urban stormwater sectors should result in decreased loads in the Port Tobacco River watershed's non-tidal streams.

MS4 Permit Implementation Plans

MDE published the Final Determination to Issue a Stormwater Permit to Charles County in December 2014 and to the State Highway Administration in October 2015. The permit states, "*By regulation at 40 CFR §122.44, BMPs and programs implemented pursuant to this permit must be consistent with applicable WLAs developed under [US]EPA approved TMDLs.*"

FINAL

Section IV.E. of the permit details requirements for *Restoration Plans and Total Maximum Daily Loads*. Within one year of permit issuance, the permittee is required to submit an implementation plan for each stormwater WLA approved by the USEPA prior to the effective date of the permit. For TMDLs approved after the permit, implementation plans are due within one year of the USEPA approval of the TMDL. Implementation plans should include the following: a detailed implementation schedule, the final date for meeting applicable WLAs, a detailed cost estimate for all elements of the plan, a system that evaluates and tracks implementation through monitoring or modeling to document progress towards meeting established benchmarks, deadlines, and stormwater WLAs, and a public participation program. An annual TMDL assessment report shall also be submitted to MDE. Many of the practices which are described in the permittees' stormwater WLA implementation plans may also be used by the permittees as retrofits for meeting their impervious area restoration requirements.

Stormwater retrofits can address both water quality and quantity. Examples of these retrofits include the reduction of impervious surfaces, modification of existing or installation of new stormwater structural practices, increased urban tree canopy, and stream restoration projects. Based on estimates by CBP, stormwater retrofit reductions range from as low as 10% for dry detention, to approximately 80% for wet ponds, wetlands, infiltration practices, and filtering practices (USEPA 2003b).

For more information on the MS4 permits, please see [Maryland's NPDES Municipal Separate Storm Sewer System \(MS4\) Permits](#).

General Permit for Discharges from Small MS4s

MDE published the Final Determination to Issue the General Permit for Discharges from Small Municipal Separate Storm Sewer Systems (MS4s), which applies to the Town of La Plata, in April 2018. The permit states that MS4 owners and operators must meet the following requirement:

“Attain applicable wasteload allocations (WLAs) for each established or approved Total Maximum Daily Load (TMDL) for each receiving water body, consistent with Title 33 of the U.S. Code (USC) 1342(p)(3)(B)(iii); 40 CFR § 122.44(k)(2)...”

Section V of the permit details requirements for *Chesapeake Bay Restoration and Meeting Total Maximum Daily Loads*. The general permit will require small MS4s to commence restoration efforts for twenty percent of existing developed lands that have little or no stormwater management. The five-year permit term requires permittees to develop planning strategies and work toward implementing water quality improvement projects. Restoration planning strategies and implementation schedules required under the general permit are consistent with addressing the water quality goals of the Chesapeake Bay TMDL by 2025. The general permit requires permittees to perform watershed assessments, identify water quality improvement opportunities, secure appropriate funding, and develop an implementation schedule to show the twenty percent impervious area restoration requirement will be achieved by 2025.

FINAL

Stormwater retrofits can address both water quality and quantity. Examples of these retrofits include the reduction of impervious surfaces, modification of existing or installation of new stormwater structural practices, increased urban tree canopy, and stream restoration projects. Based on estimates by CBP, stormwater retrofit reductions range from as low as 10% for dry detention, to approximately 80% for wet ponds, wetlands, infiltration practices, and filtering practices (USEPA 2003b).

For more information on the MS4 permits, please see [Maryland's NPDES Municipal Separate Storm Sewer System \(MS4\) Permits](#).

Implementation of Agricultural Best Management Practices

In agricultural areas comprehensive soil conservation plans can be developed that meet criteria of the USDA-NRCS Field Office Technical Guide (USDA 1983). Soil conservation plans help control erosion by modifying cultural practices or structural practices. The reduction percentage attributed to cultural practices is determined based on changes in land-use, while structural practices have a reduction percentage of up to 25%. In addition, sediment loadings from livestock can be controlled via stream fencing and rotational grazing. Sediment reduction efficiencies of methods applicable to pasture land-use range from 40% to 75% (USEPA 2004). Lastly, riparian buffers can reduce the effect of agricultural sediment sources through trapping and filtering.

Funding of Agricultural Best Management Practices

These measures can be funded through Maryland Department of Agriculture's (MDA's) Maryland Agricultural Water Quality Cost-Share (MACS) Program and USDA's Environmental Quality Incentives Program (EQIP) and Conservation Reserve Enhancement Program (CREP).

The MACS program was authorized in 1982 as one of several initiatives to improve water quality and achieve state water quality objectives. The MACS Program provides farmers with grants to cover up to 87.5 percent of the cost to install conservation measures known as best management practices on their farms to prevent soil erosion, manage nutrients and safeguard water quality in streams, rivers and the Chesapeake Bay.

Through EQIP, NRCS provides agricultural producers with financial resources and one-on-one help to plan and implement improvements, or what NRCS calls conservation practices. Using these practices can lead to cleaner water and air, healthier soil and better wildlife habitat, all while improving agricultural operations.

The U.S. Department of Agriculture (USDA) and the State of Maryland have partnered in implementing a voluntary CREP to enroll up to 100,000 acres of agricultural land situated in Maryland. The Maryland Chesapeake Bay CREP is intended to improve water quality, reduce soil erosion, reduce the amount of sediment, phosphorous and other pollutants entering waterbodies, improve wildlife habitat and restore wetlands. With

FINAL

CREP, high-priority conservation goals are identified by the state, and then federal funds are supplemented with non-federal funds to achieve those goals.

Maryland Funding Programs

In response to the WIP and the increased responsibility for local governments to achieve nutrient and sediment reduction goals, Maryland has continued to increase funding in the Chesapeake and Atlantic Coastal Bays Trust Fund. *‘Historical and Projected Chesapeake Bay Restoration Spending: A Report to the Maryland General Assembly pursuant to the 2018 Joint Chairman’s Report’* about Section 40 of Maryland’s Operating Budget, even though the annual restoration funds for the four agencies [MDDNR, MDA, MDE, MDP] varies from year to year, the total restoration funds for the first three years of the its evaluated time period (FY00 – FY02) was \$882,327,165, while the total for the past three years of the period (FY15 – FY17) was \$2,657,862,414, an increase of 201.2 percent. This increase was driven in part by the two primary Bay restoration Special Funds: The Bay Restoration Fund and the Chesapeake and Atlantic Coastal Bays Trust Fund (MDE et al. 2018). For more information on Maryland’s implementation and funding strategies to achieve nutrient and sediment reductions throughout the State’s portion of the Chesapeake Bay watershed, please see [Maryland’s Phase II Watershed Implementation Plan](#).

Some other examples of programs that can provide funding for local governments and agricultural sources include the Federal Nonpoint Source Management Program (§ 319 of the Clean Water Act), the Buffer Incentive Program (BIP), the State Water Quality Revolving Loan Fund and the Maryland Agricultural Water Quality Cost-Share Program.

In summary, through the use of the aforementioned funding mechanisms and BMPs, there is reasonable assurance that this TMDL can be implemented.

Additional Biological Stressors

As has been stated previously in this report, the biological impairment in this watershed is due to multiple stressors, not just sediment. While reducing TSS might bring about a water quality impact in terms of clarity, achieving a positive impact in stream biological communities might require several stressors to be addressed. The BSID also identified inorganic pollutants and nutrients as parameters significantly associated with degraded biological conditions in this watershed. The Port Tobacco River was listed on Category 5 of the 2016 Integrated Report for sulfates and chlorides (inorganic pollutants), and will require an additional TMDL.

Many of the implementation actions to address sediment could concurrently address the other stressors identified in the BSID report. For example, a stream restoration project that reduces sediment loads could improve in-stream habitat. Since biological improvements will likely only be seen when multiple structural and pollutant stressors are addressed, watershed managers developing plans to address sediment should consider the

FINAL

effect of restoration projects on other stressors. Where possible, preference should be given to designs that address multiple stressors.

FINAL

REFERENCES

- CES (Coastal Environmental Service, Inc.). 1995. Patapsco/Port Tobacco River Watershed Study, prepared for the MDE and TARSA, September 30, 1995.
- CFR (Code of Federal Regulations). 2016a. *40 CFR 130.2(i)*.
<https://www.law.cornell.edu/cfr/text/40/130.2> (Accessed May 2018).
- _____. 2016b. *40 CFR 130.7*. <https://www.law.cornell.edu/cfr/text/40/130.7> (Accessed May 2018).
- Claggett, P., F. M. Irani, and R. L. Thompson. 2012. *Estimating the Extent of Impervious Surfaces and Turf Grass across Large Regions*. Annapolis, MD: United States Geological Survey, Chesapeake Bay Program Office.
- Cochran, W. G. 1977. *Sampling Techniques*. New York: John Wiley and Sons.
- COMAR (Code of Maryland Regulations). 2016a. *26.08.02.02 B(1,3,5&7)*; *26.08.02.02-1*. <http://www.dsd.state.md.us/comar/comarhtml/26/26.08.02.02.htm>
- _____. 2016b. *26.08.02.08 i(2)(e)*.
<http://www.dsd.state.md.us/comar/comarhtml/26/26.08.02.08.htm>
- _____. 2016c. *26.08.02.07 A*.
<http://www.dsd.state.md.us/comar/comarhtml/26/26.08.02.07.htm>
- _____. 2016d. *26.08.02.04*.
<http://www.dsd.state.md.us/comar/comarhtml/26/26.08.02.04.htm>
- Klauda, R., P. Kazyak, S. Stranko, M. Backerland, N. Roth, and J. Chaillou. 1998. The Maryland Biological Stream Survey: A State Agency Program to Assess the Impact of Anthropogenic Stresses on Stream Habitat Quality and Biota. *Environmental Monitoring and Assessment* 51: 299-316.
- MDE (Maryland Department of the Environment). 2000. An Overview of Wetlands and Water Resources of Maryland. Baltimore, MD: Maryland Department of the Environment.
- _____. 2008. *The 2008 Integrated Report of Surface Water Quality in Maryland*. Baltimore, MD: Maryland Department of the Environment. Also Available at http://mde.maryland.gov/programs/Water/TMDL/Integrated303dReports/Documents/Integrated_Report_Section_PDFs/IR_2008/2008_IR_Category_5_Waters.pdf

- _____. 2006. *A Methodology for Addressing Sediment Impairments in Maryland's Non-tidal Watersheds*. Baltimore, MD: Maryland Department of the Environment. Also Available at http://www.mde.state.md.us/programs/Water/TMDL/ApprovedFinalTMDLs/Documents/www.mde.state.md.us/assets/document/NT_Sediment_TMDL_Method_Report_20070728.pdf
- _____. 2009. *Maryland Biological Stressor Identification Process*. Baltimore, MD: Maryland Department of the Environment. Also Available at http://staging.mde.state.md.us/programs/Water/TMDL/Documents/www.mde.state.md.us/assets/document/BSID_Methodology_Final.pdf.
- _____. 2010. *Maryland's Phase I Watershed Implementation Plan for the Chesapeake Bay Total Maximum Daily Load*. Baltimore, MD: Maryland Department of the Environment. Also available at: http://www.mde.state.md.us/programs/Water/TMDL/Documents/www.mde.state.md.us/assets/document/MD_Phase_I_Plan_12_03_2010_Submitted_Final.pdf
- _____. 2011. *Maryland Tier II Dataset*. Baltimore, MD: Maryland Department of the Environment.
- _____. 2015. *Watershed Report for Biological Impairment of the Port Tobacco River Watershed, Charles County, Maryland Biological Stressor Identification Analysis Results and Interpretation*. Baltimore, MD: Maryland Department of the Environment. Also available at: http://mde.maryland.gov/programs/Water/TMDL/Documents/BSID_Reports/Port_Tobacco_River_BSID_090215_final.pdf
- _____. 2012b. *Maryland's Phase II Watershed Implementation Plan for the Chesapeake Bay Total Maximum Daily Load*. Baltimore, MD: Maryland Department of the Environment. Also available at: http://www.mde.state.md.us/programs/Water/TMDL/TMDLImplementation/Pages/FINAL_PhaseII_WIPDocument_Main.aspx
- _____. 2012c. *The 2012 Integrated Report of Surface Water Quality in Maryland*. Baltimore, MD: Maryland Department of the Environment. Also available at: http://mde.maryland.gov/programs/Water/TMDL/Integrated303dReports/Pages/2012_IR.aspx
- _____. 2014. Maryland Department of the Environment National Pollutant Discharge Elimination System Municipal Separate Storm Sewer System Discharge Permit (Permit Number: 11-DP-3322 MD0068365; Charles County, Maryland). <http://mde.maryland.gov/programs/Water/StormwaterManagementProgram/Documents/Charles%20Permit.pdf> (Accessed May, 2018).

FINAL

_____. 2015. Maryland Department of the Environment National Pollutant Discharge Elimination System Municipal Separate Storm Sewer System Discharge Permit (Permit Number: 11-DP-3313 MD0068276; MS4 system owned and operated by SHA in all MD Phase I and Phase II Jurisdictions, Maryland). http://mde.maryland.gov/programs/Water/StormwaterManagementProgram/Documents/SHA%20Final%20Permit%20complete%2010_9_2015.pdf (Accessed May, 2018).

_____. 2018. *Tier II High Quality Waters Map*. Baltimore, MD: Maryland Department of the Environment. Also available at: <https://mde.maryland.gov/programs/Water/TMDL/Integrated303dReports/Pages/2018IR.aspx>

_____. 2016. *2016 Integrated Report of Surface Water Quality in Maryland*. Baltimore, MD: Maryland Department of the Environment. Also available at: <http://mde.maryland.gov/programs/Water/TMDL/WaterQualityStandards/Pages/HighQualityWatersMap.aspx>

MDE, MDDNR, MDA (Maryland Department of Agriculture), MDP (Maryland Department of Planning), DBM (Maryland Department of Budget and Management). 2018. *Historical and Projected Chesapeake Bay Restoration Spending: A Report to the Maryland General Assembly pursuant to the 2015 Joint Chairman's Report – page 225*. Page 10.

MES (Maryland Environmental Service). 1974. Seminar on Water Pollution in the Baltimore Area. Maryland Environmental Service, Annapolis, MD. 1974.

MGS (Maryland Geological Survey). 2012. *A Brief Description of the Geology of Maryland*. <http://www.mgs.md.gov/esic/brochures/mdgeology.html> (Accessed May, 2018).

Nusser, S. M., and J. J. Goebel. 1997. The National Resources Inventory: A Long-Term Multi-Resource Monitoring Program. *Environmental and Ecological Statistics* 4: 181-204.

Roth, N., M. T. Backerland, J. C. Chaillou, R. Klauda, P. F. Kazyak, S. A. Stranko, S. Weisberg, L. Hall Jr., and R. Morgan II. 1998. Maryland Biological Stream Survey: Development of a Fish Index of Biotic Integrity. *Environmental Management and Assessment* 51: 89-106.

Roth, N. E., M. T. Backerland, J. C. Chaillou, P. F. Kazyak, and S. A. Stranko. 2000. *Refinement and Validation of a Fish Index of Biotic Integrity for Maryland Streams*. Columbia, MD: Versar, Inc. with Maryland Department of Natural Resources, Monitoring and Non-Tidal Assessment Division.

Roth, N. E., M. T. Backerland, J. C. Chaillou, G. M. Rogers, and J. H. Volstad. 2005. Maryland Biological Stream Survey 2000-2004: Volume IV: Ecological Assessment

FINAL

of Watersheds Sampled in 2003. Columbia, MD: Versar, Inc. with Maryland Department of Natural Resources, Monitoring and Non-Tidal Assessment Division.

Southerland, M. T., G. M. Rogers, R. J. Kline, R. P. Morgan, D. M. Boward, P. F. Kazyak, R. J. Klauda and S. A. Stranko. 2005. New biological indicators to better assess the condition of Maryland Streams. Columbia, MD: Versar, Inc. with Maryland Department of Natural Resources, Monitoring and Non-Tidal Assessment Division. CBWP-MANTA-EA-05-13. Available at http://dnr.maryland.gov/streams/Publications/ea-05-13_new_ibi.pdf

Stribling, J. B., B. K. Jessup, J. S. White, D. Boward, and M. Hurd. 1998. *Development of a Benthic Index of Biotic Integrity for Maryland Streams*. Owings Mills, MD: Tetra Tech, Inc. with Maryland Department of Natural Resources, Monitoring and Non-Tidal Assessment Program.

US Census Bureau. 2010. *2010 Census*. Washington, DC: US Census Bureau.

USDA (United States Department of Agriculture). 1982. *1982 Census of Agriculture*. Washington, DC: United States Department of Agriculture.

_____. 1983. Sediment Sources, Yields, and Delivery Ratios. In *National Engineering Handbook, Section 3, Sedimentation*. Washington, DC: United States Department of Agriculture, Natural Resources Conservation Service.

_____. 1987. *1987 Census of Agriculture*. Washington, DC: United States Department of Agriculture.

_____. 1992. *1992 Census of Agriculture*. Washington, DC: United States Department of Agriculture.

_____. 1997. *1997 Census of Agriculture*. Washington, DC: United States Department of Agriculture.

_____. 2002. *2002 Census of Agriculture*. Washington, DC: United States Department of Agriculture.

_____. 2006. *State Soil Geographic (STATSGO) Database for Maryland*. Washington, DC: United States Department of Agriculture, Natural Resources Conservation Service. Also available at <http://websoilsurvey.sc.egov.usda.gov/App/HomePage.htm>.

USEPA (U.S. Environmental Protection Agency). 1991. *Technical Support Document (TSD) for Water Quality-based Toxics Control*. Washington, DC: U.S. Environmental Protection Agency. Also available at <http://www.epa.gov/npdes/pubs/owm0264.pdf>.

FINAL

_____. 2002. *Establishing Total Maximum Daily Load (TMDL) Wasteload Allocations (WLAs) for Storm Water Sources and NPDES Permit Requirements Based on Those WLAs*. Washington, DC: U.S. Environmental Protection Agency.

- _____. 2003a. Developing water quality criteria for suspended and bedded sediments (SABS) – Potential Approaches – DRAFT. USEPA Science Advisory Board Consultation, EPA Office of Water, Office of Science and Technology, August 2003.
- _____. 2003b. *Stormwater Best Management Practice Categories and Pollutant Removal Efficiencies*. Annapolis, MD: U.S. Environmental Protection Agency with Chesapeake Bay Program.
- _____. 2004. *Agricultural BMP Descriptions as Defined for the Chesapeake Bay Program Watershed Model*. Annapolis, MD: U.S. Environmental Protection Agency with Chesapeake Bay Program.
- _____. 2007. *Options for the Expression of Daily Loads in TMDLs*. Washington, DC: U.S. Environmental Protection Agency, Office of Wetlands, Oceans & Watersheds. Also available at <https://www.epa.gov/tmdl/options-expressing-daily-loads-tmdls>.
- _____. 2010a. *Chesapeake Bay Total Maximum Daily Load for Nitrogen, Phosphorus, and Sediment*. Annapolis, MD: U.S. Environmental Protection Agency, Chesapeake Bay Program Office. Also available at <http://www.epa.gov/reg3wapd/tmdl/ChesapeakeBay/tmdlexec.html>.
- _____. 2010b. *Chesapeake Bay Phase 5.3 Community Watershed Model*. Annapolis, MD: U.S. Environmental Protection Agency, Chesapeake Bay Program Office. Also available at <http://ches.communitymodeling.org/models/CBPhase5/documentation.php#p5modeldoc>.
- _____. 2014. *Revisions to the November 22, 2002 Memorandum establishing Total Maximum Daily Load (TMDL) Wasteload Allocations (WLAs) for Storm Water Sources and NPDES Permit Requirements Based on Those LAs*. Washington, DC: U.S. Environmental Protection Agency.
- _____. 2016. *Ecoregions*. Retrieved October 12, 2016, from <https://www.epa.gov/eco-research/ecoregions>

APPENDIX A – Watershed Characterization Data

Table A-1: Reference Watersheds in the Western Coastal Plains Physiographic Region

| MD 8-Name | MD 8-digit | Percent Stream Mile BIBI/FIBI < 3.0 (%) ^{1,2} | Forest Normalized Sediment Load ³ |
|-----------------------------------|------------|--|--|
| Potomac River - Lower Tidal | 02140102 | 14.3 | 2.46 |
| Breton Bay | 02140104 | 16.7 | 3.81 |
| St. Clements Bay | 02140105 | 16.7 | 4.30 |
| Wicomico River | 02140106 | 20.0 | 4.80 |
| Gilbert Swamp | 02140107 | 17.6 | 4.72 |
| Zekiah Swamp | 02140108 | 14.3 | 3.91 |
| Nanjemoy Creek | 02140110 | 17.6 | 2.88 |
| Median | | | 3.9 |
| 75th percentile | | | 4.5 |

- Notes:**
- ¹ Based on the percentage of MBSS stations with BIBI and/or FIBI scores significantly lower than 3.0 within the watershed (MDE 2012c).
 - ² The percent stream miles with BIBI and/or FIBI scores significantly lower than 3.0 threshold to determine if an 8-digit watershed is impaired for impacts to biological communities is based on a comparison to reference conditions (MDE 2008).
 - ³ Forest normalized sediment loads based on Maryland watershed area only (consistent with MBSS random monitoring data).

APPENDIX B – Technical Approach Used to Generate Maximum Daily Loads

Summary

This appendix documents the technical approach used to define maximum daily loads (MDLs) of sediment consistent with the average annual TMDL in the Port Tobacco River watershed, which is considered the maximum allowable load the watershed can sustain and protect aquatic life. The approach builds upon the modeling analysis that was conducted to determine the sediment loadings and can be summarized as follows.

- The approach defines MDLs for each of the source categories.
- The approach builds upon the TMDL modeling analysis that was conducted to ensure that average annual loading targets are at a level that protect aquatic life.
- The approach converts daily time-series loadings into TMDL values in a manner that is consistent with available USEPA guidance on generating daily loads for TMDLs (USEPA 2007).
- The approach considers a daily load level of a resolution based on the specific data that exists for each source category.

Introduction

This appendix documents the development and application of the approach used to define MDL values. It is divided into sections discussing:

- Basis for approach
- Options considered
- Selected approach
- Results of approach

Basis for approach

The overall approach for the development of daily loads was based upon the following factors:

- **Average Annual TMDL:** The basis of the average annual sediment TMDL is that cumulative high sediment loading rates have negative impacts on the biological community. Thus, the average annual sediment load was calculated so as to ensure the protection of aquatic life.
- **CBP P5.3.2 Watershed Model Sediment Loads:** As described in Section 2.2, the nonpoint source sediment loads from the Port Tobacco River watershed are based on EOS loads from the CBP P5.3.2 watershed model. The CBP P5.3.2 model river segments were calibrated to daily monitoring information for watersheds with a flow greater than 100 cubic feet per second (cfs), or an approximate area of 100 square miles.

FINAL

- **Draft USEPA guidance document entitled “Developing Daily Loads for Load-based TMDLs”:** This guidance document provides options for defining MDLs when using TMDL approaches that generate daily output (USEPA 2007).

The rationale for developing TMDLs expressed as *daily* loads was to accept the existing average annual TMDL, but then develop a method for converting this number to a MDL in a manner consistent with USEPA guidance and available information.

Options considered

The draft USEPA guidance document for developing daily loads does not specify a single approach that must be adhered to, but rather it contains a range of acceptable options (USEPA 2007). The selection of a specific method for translating a time-series of allowable loads into the expression of a TMDL requires decisions regarding both the level of resolution (e.g., single daily load for all conditions vs. loads that vary with environmental conditions) and level of probability associated with the TMDL.

This section describes the range of options that were considered when developing methods to calculate Port Tobacco River watershed MDLs.

Level of Resolution

The level of resolution pertains to the amount of detail used in specifying the MDL. The draft USEPA guidance document on daily loads provides three categories of options for level of resolution, all of which are potentially applicable for the Port Tobacco River watershed:

1. **Representative daily load:** In this option, a single daily load (or multiple representative daily loads) is specified that covers all time periods and environmental conditions.
2. **Variable daily load:** This option allows the MDL to vary as a function of a particular characteristic that affects loading or waterbody response, such as flow or season.

Probability Level

All TMDLs have some probability of being exceeded, with the specific probability being either explicitly specified or implicitly assumed. This level of probability directly or indirectly reflects two separate phenomena:

1. Water quality criteria consist of components describing acceptable magnitude, duration, and frequency. The frequency component addresses how often conditions can allowably surpass the combined magnitude and duration components.
2. Pollutant loads, especially from wet weather sources, typically exhibit a large degree of variability over time. It is rarely practical to specify a “never to be exceeded value” for a daily load, as essentially any loading value has some finite probability of being exceeded.

FINAL

The draft daily load guidance document states that the probability component of the MDL should be based on a representative statistical measure that is dependent upon the specific TMDL and the best professional judgment of the developers (USEPA 2007). This statistical measure represents how often the MDL is expected/allowed to be exceeded. The primary options for selecting this level of protection would be:

1. **The maximum daily load reflects some central tendency:** In this option, the MDL is based upon the mean or median value of the range of loads expected to occur. The variability in the actual loads is not addressed.
2. **The maximum daily load is a value that will be exceeded with a pre-defined probability:** In this option, a “reasonable” upper bound percentile is selected for the MDL based upon a characterization of the variability of daily loads. For example, selection of the 95th percentile value would result in a MDL that would be exceeded 5% of the time.
3. **The maximum daily load reflects a level of protection implicitly provided by the selection of some “critical” period:** In this option, the MDL is based upon the allowable load that is predicted to occur during some critical period examined during the analysis. The developer does not explicitly specify the probability of occurrence.

Selected Approach

The approach selected for defining a Port Tobacco River Watershed MDL was based upon the specific data that exists for each source category. The approach consists of unique methods for each of the following categories of sources:

- Approach for Nonpoint Sources and Stormwater Point Sources within the Port Tobacco River watershed
- Approach for Wastewater Point Sources within the Port Tobacco River watershed

Approach for Nonpoint Sources and Stormwater Point Sources within the Port Tobacco River Watershed

The level of resolution selected for the Port Tobacco River MDL was a representative daily load, expressed as a single daily load for each loading source. This approach was chosen based upon the specific data that exists for nonpoint sources and stormwater point sources within the Port Tobacco River watershed. Currently, the best available data is the CBP P5.3.2 model daily time series calibrated to long-term average annual loads (per land-use). The CBP reach simulation results are calibrated to daily monitoring information for watershed segments with a flow typically greater than 100 cfs.

The probability level selected for the Port Tobacco River MDL was a pre-defined exceedance probability. Based on the USEPA guidance, “in the case where a long term daily load dataset is available, in which multiple years of data and a variety of environmental conditions are represented, it is preferable to select a maximum daily load as a percentile of the load distribution. A sufficiently long-term dataset allows for

FINAL

minimizing error associated with the fact that the daily load dataset might not exactly match a normal or lognormal distribution” (USEPA 2007). The exact percentile value to be used should be determined by the TMDL developer, based on site specific characteristics.

This CBP P5.3.2 model output provides a time series of daily TSS loads from the Port Tobacco River watershed, covering a 20-year period from 1985 to 2005. Because this is a long-term time series, it captures a broad range of meteorological and hydrological conditions and also minimizes the effect of potential statistical variances. As with the calculation of the TMDL value, environmentally conservative principles are also used in the MDL calculation. A 95th percentile flow was selected for the MDL, meaning that there is a 5% probability that daily loads will exceed this value. This percentile was chosen rather the 99th (which is also considered acceptable based on USEPA), in order to avoid the influence of extreme weather events and statistical outliers. Since the model daily time series represents the current (baseline) condition, the reduction percentage applied to each sector of the TMDL, was applied directly to the 95th percentile values to calculate the final MDL value.

$$MDL = 95th \text{ percentile of daily load series values} * \text{Reduction \% from TMDL} \quad (\text{Eq B-1})$$

Where:

MDL = Maximum Daily Load, ton/day

Daily load series values = CBP 5.3.2 output

TMDL = Long term average annual load, ton/yr

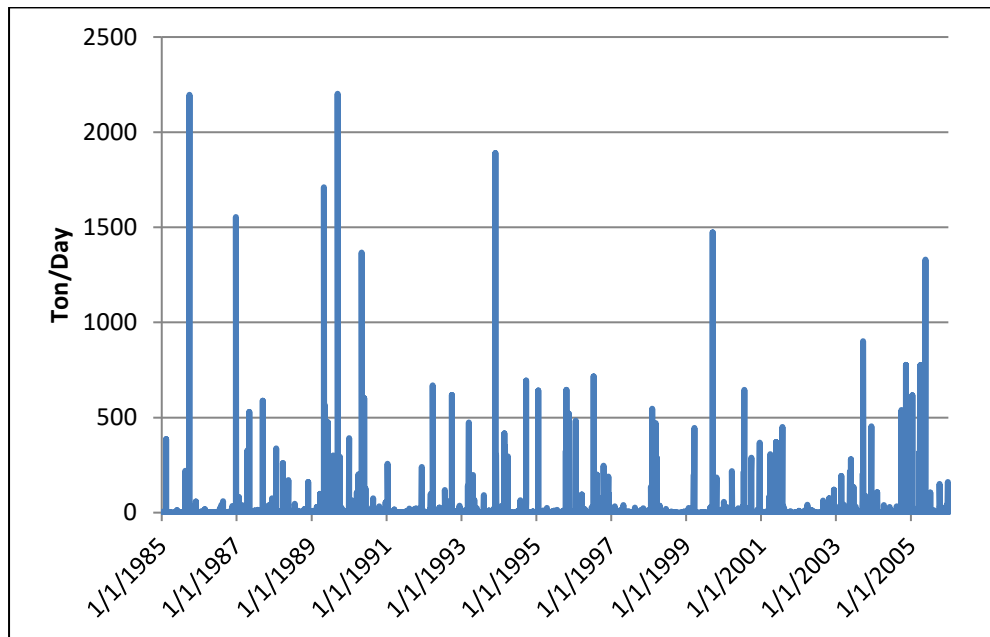


Figure B-1: Daily Time Series of CBP River Segment Daily Simulation Results for the Port Tobacco River Watershed

Approach for Wastewater Point Sources within the Port Tobacco River Watershed

The TMDL also considers contributions from other point sources (i.e., sources other than stormwater point sources) in the watershed that have NPDES permits with sediment limits. As these sources are generally minor contributors to the overall sediment load, the TMDL analysis that defined the average annual TMDL did not propose any reductions for these sources and held each of them constant at their existing technology-based NPDES permit monthly (or daily if monthly was not specified) limit for the entire year.

The approach used to determine MDLs for these sources was dependent upon whether a maximum daily limit was specified within the permit. If a maximum daily limit was specified, then the reported average flow was multiplied by the daily maximum limit and a conversion factor of 0.0042 to obtain an MDL in ton/day. If a maximum daily limit was not specified, the MDLs were calculated based on the guidance provided in the Technical Support Document (TSD) for Water Quality-based Toxics Control (USEPA 1991). The long-term average annual TMDL was converted to maximum daily limits using Table 5-2 of the TSD assuming a coefficient of variation of 0.6 and a 99th percentile probability. This results in a dimensionless multiplication factor of 3.11. The average annual Port Tobacco River TMDL of sediment/TSS is reported in ton/yr, and the conversion from ton/yr to a MDL in ton/day is 0.0085 (e.g. 3.11/365).

Results of approach

This section lists the results of the selected approach to define the Port Tobacco River MDLs. The final results are presented in Table B-1.

- Calculation Approach for Nonpoint Sources and Stormwater Point Sources within the Port Tobacco River Watershed

The MDL for Nonpoint Sources and Stormwater Point Sources within the Port Tobacco River Watershed is based upon the 95th percentile value of the CBP P5.3.2 model daily load time series, reduced by the same percentage as the corresponding TMDL value. The 95th percentile load of the daily times series is 7 tons/day and with a TMDL reduction of 17%, it results in a total watershed MDL of 6 tons/day. The total MDL is subdivided in accordance with the same ratios present in the TMDL.

- Calculation Approach for Wastewater Point Sources within the Port Tobacco River Watershed

- For permits with a daily maximum limit:

Wastewater WLA_{PTR} (ton/day) = Permit flow (millions of gallons per day (MGD)) * Daily maximum permit limit (milligrams per liter (mg/l)) * 0.0042, where 0.0042 is a combined factor required to convert units to ton/day

- For permits without a daily maximum limit:

Wastewater WLA_{PTR} (ton/day) = Average Annual TMDL Wastewater WLA_{PTR} Other (ton/yr)* 0.0085, where 0.0085 is the factor required to convert units to ton/day

The aggregate MDL for the point sources in the watershed is negligible.

Table B-1: Port Tobacco River Watershed Maximum Daily Loads of Sediment/TSS (ton/day)

| MDL (ton/day) | = | LA_{PTR} | + | NPDES Stormwater WLA_{PTR} | + | Wastewater WLA_{PTR} | + | MOS |
|----------------------|---|------------------------------|---|--|---|--|---|------------|
| 6 | = | 4 | + | 2 | + | 0.02 | + | Implicit |

Note: Individual values may not add to totals due to rounding