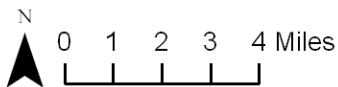
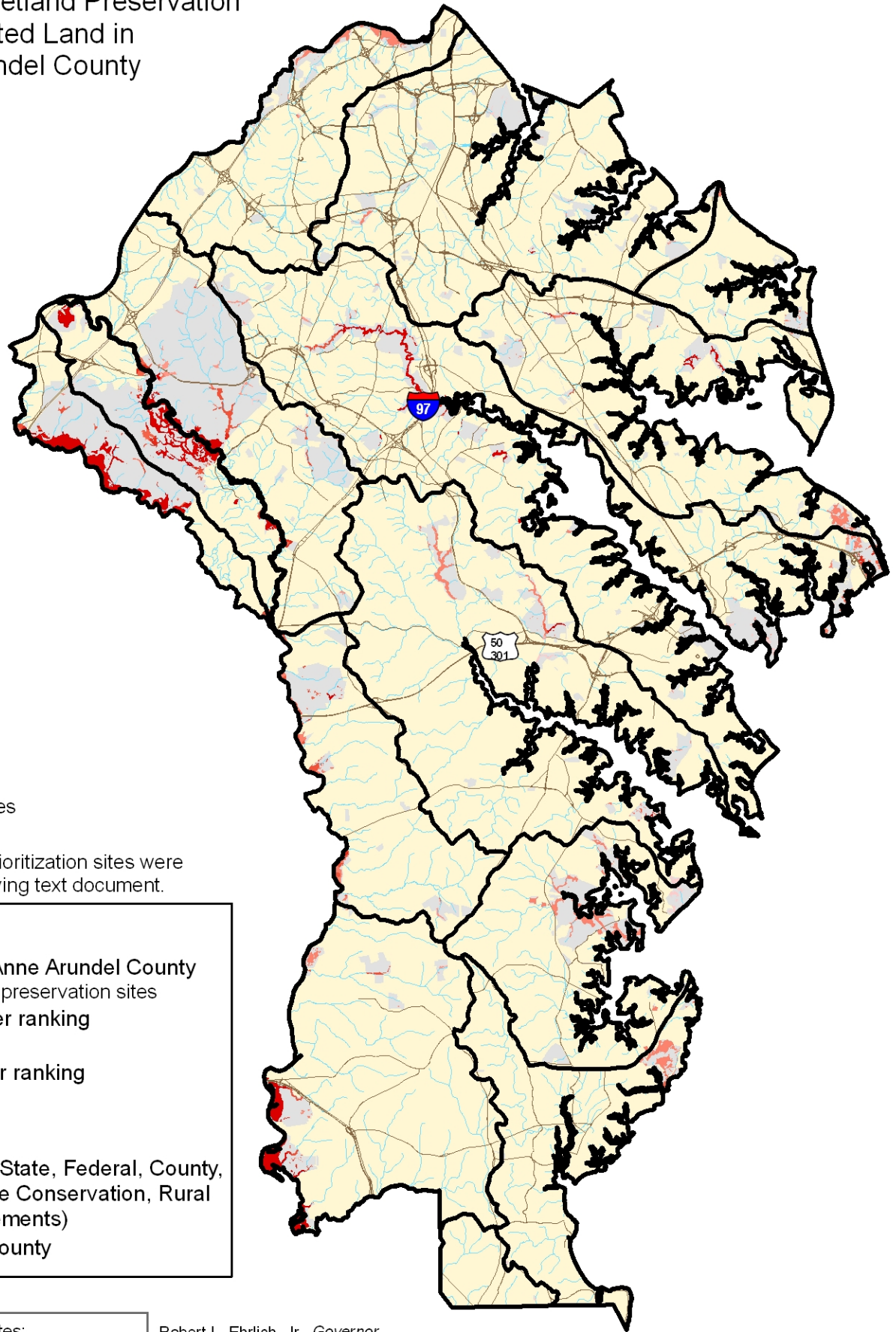


Priority Sites for Wetland Preservation on Protected Land in Anne Arundel County



Note: Additional wetland prioritization sites were identified in the accompanying text document.

Legend

- Watersheds in Anne Arundel County
- Potential wetland preservation sites
 - Higher ranking
 - Lower ranking
- Roads
- Water
- Protected land (State, Federal, County, METs, Private Conservation, Rural Legacy Easements)
- Anne Arundel County

- GIS layers used in ranking sites:
- Scenic Rivers
 - Nontidal Wetlands of Special State Concern (NTWSSC) and potential NTWSSC
 - Ecologically Significant Areas
 - Greenways
 - Protected land
 - Existing wetlands (DNR, NWI)

Robert L. Ehrlich, Jr., *Governor*
 Michael S. Steele, *Lt. Governor*
 Kendl P. Philbrick, *Secretary*
 Jonas A. Jacobson, *Deputy Secretary*

Map prepared by Maryland Department of the Environment using data supplied by Maryland Department of the Environment, Maryland Department of Natural Resources, U.S. Geological Survey, U.S. Fish and Wildlife Service, and Anne Arundel County.

