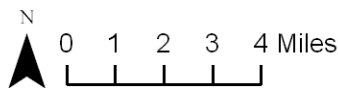
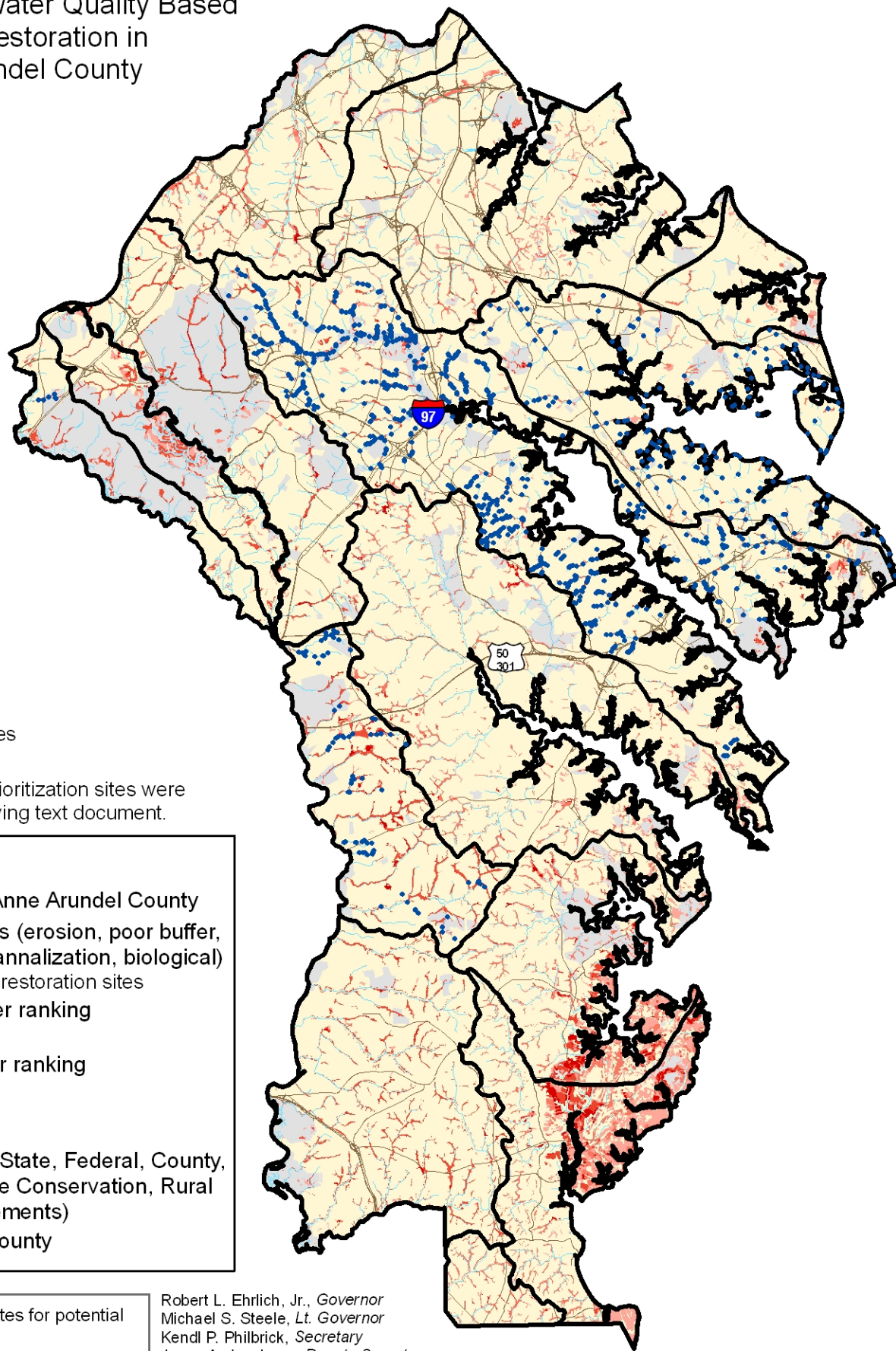


Priority Sites for Water Quality Based Wetland Restoration in Anne Arundel County



Note: Additional wetland prioritization sites were identified in the accompanying text document.

Legend

- Watersheds in Anne Arundel County
- Stream problems (erosion, poor buffer, fish barrier, channalization, biological)
- Potential wetland restoration sites
 - ▲ Higher ranking
 - Lower ranking
- Roads
- Water
- Protected land (State, Federal, County, METs, Private Conservation, Rural Legacy Easements)
- Anne Arundel County

GIS layers used in ranking sites for potential wetland restoration:

- DNR farmed wetlands
- Land use
- Streams and 100m buffer
- Scenic Rivers
- Soils w/ drainage of SPD, PD, VPD
- Prime farmland
- Existing wetlands (DNR, NWI)

Robert L. Ehrlich, Jr., *Governor*
 Michael S. Steele, *Lt. Governor*
 Kendl P. Philbrick, *Secretary*
 Jonas A. Jacobson, *Deputy Secretary*

Map prepared by Maryland Department of the Environment using data supplied by Maryland Department of the Environment, Maryland Department of Natural Resources, Maryland Department of Planning, U.S. Geological Survey, U.S. Fish and Wildlife Service, Anne Arundel County, and Natural Resources Conservation Service.

