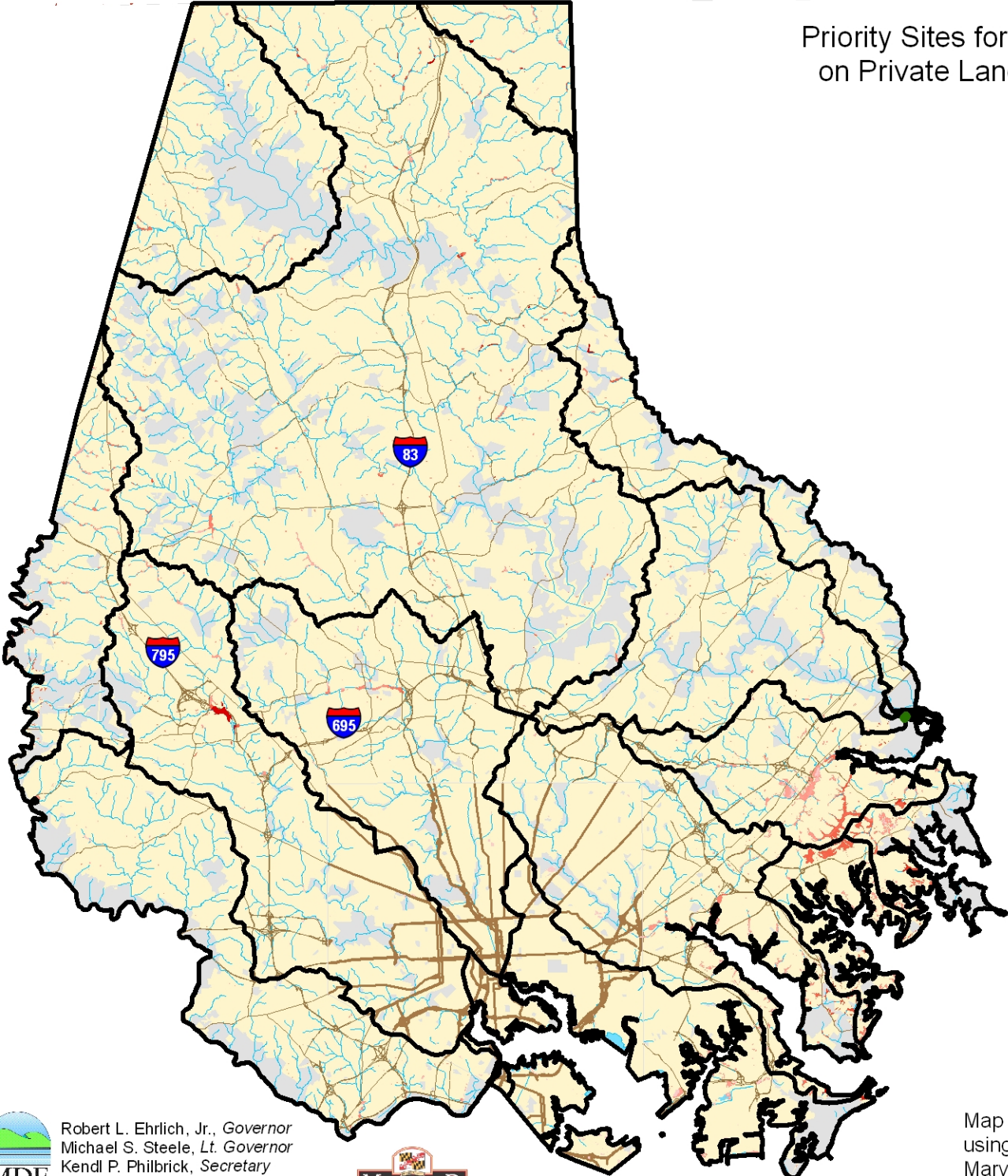


Priority Sites for Wetland Preservation on Private Land in Baltimore County



Legend

- Watersheds in Baltimore County
- Tidal reference sites
- Potential wetland preservation sites
 - Higher ranking
 - Lower ranking
- Roads
- Water
- Protected land (State, Federal, County, METs, Private Conservation, Rural Legacy Easements)
- Baltimore County

- GIS layers used in ranking sites:
- Scenic Rivers
 - Nontidal Wetlands of Special State Concern (NTWSSC) and potential NTWSSC
 - Ecologically Significant Areas
 - Green Infrastructure
 - Rural Legacy Areas
 - Protected land
 - Surface water reservoirs
 - Development risk
 - Existing wetlands (DNR, NWI)

Note: Additional wetland prioritization sites were identified in the accompanying text document.

