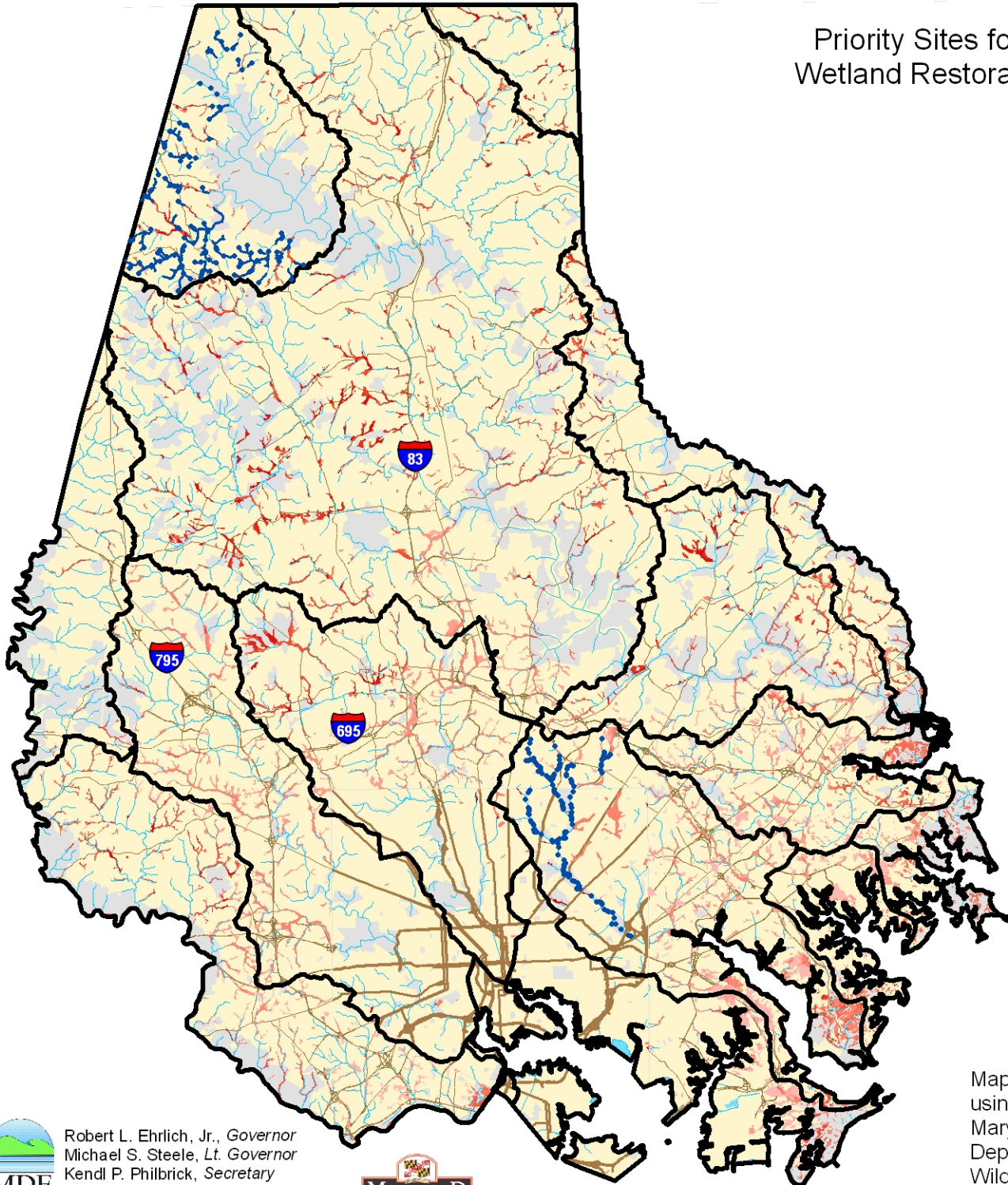


Priority Sites for Water Quality Based Wetland Restoration in Baltimore County



Legend

- Watersheds in Baltimore County
- Stream problems (erosion, poor buffer, fish barrier, channalization)
- Potential wetland restoration sites
 - Higher ranking
 - Lower ranking
- Roads
- Water
- Protected land (State, Federal, County, METs, Private Conservation, Rural Legacy Easements)
- Baltimore County

GIS layers used in ranking sites for potential wetland restoration:

- DNR farmed wetlands
- Land use
- Streams and 100m buffer
- Scenic Rivers
- Soils w/ drainage of SPD, PD, VPD
- Prime farmland
- Zoning
- Existing wetlands (DNR, NWI)

Note: Additional wetland prioritization sites were identified in the accompanying text document.

0 3 6 12 Miles