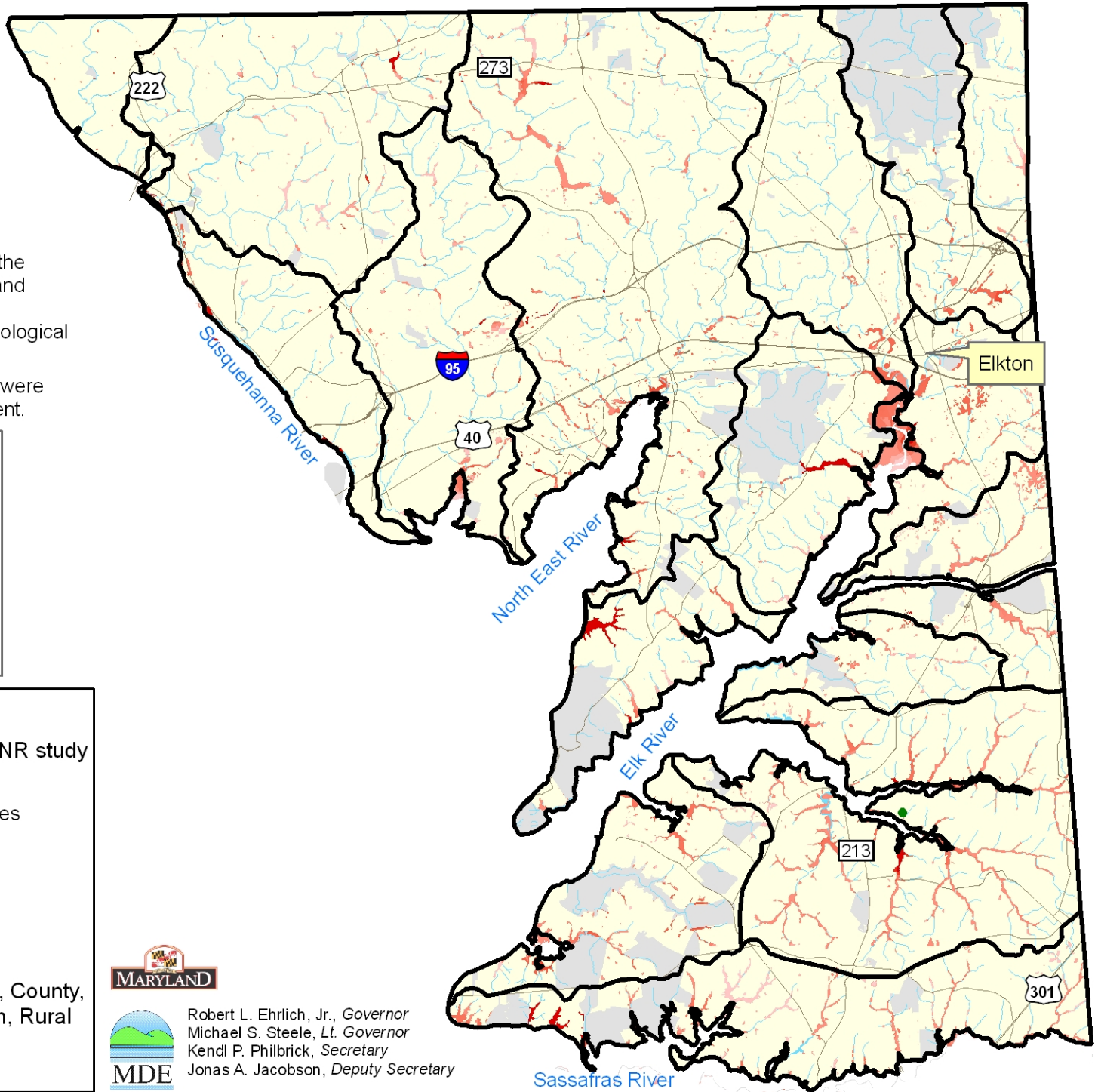


Priority Sites for Wetland Preservation on Private Land in Cecil County



Map prepared by Maryland Department of the Environment using data supplied by Maryland Department of the Environment, Maryland Department of Natural Resources, U.S. Geological Survey, and U.S. Fish and Wildlife Service.

Note: Additional wetland prioritization sites were identified in the accompanying text document.

- GIS layers used in ranking sites:
- Streams and 100m buffer
 - Nontidal Wetlands of Special State Concern (NTWSSC) and potential NTWSSC
 - Ecologically Significant Areas
 - Green Infrastructure
 - Rural Legacy Areas
 - Protected land
 - Surface water reservoirs
 - Development risk
 - Existing wetlands (DNR, NWI)

Legend

- Tidal reference sites used in DNR study
- Watersheds in Cecil County
- Potential wetland preservation sites
 - ▲ High ranking
 - Low ranking
- Roads
- Water
- Protected land (State, Federal, County, METs, Private Conservation, Rural Legacy Easements)
- Cecil County



Robert L. Ehrlich, Jr., Governor
 Michael S. Steele, Lt. Governor
 Kendl P. Philbrick, Secretary
 Jonas A. Jacobson, Deputy Secretary