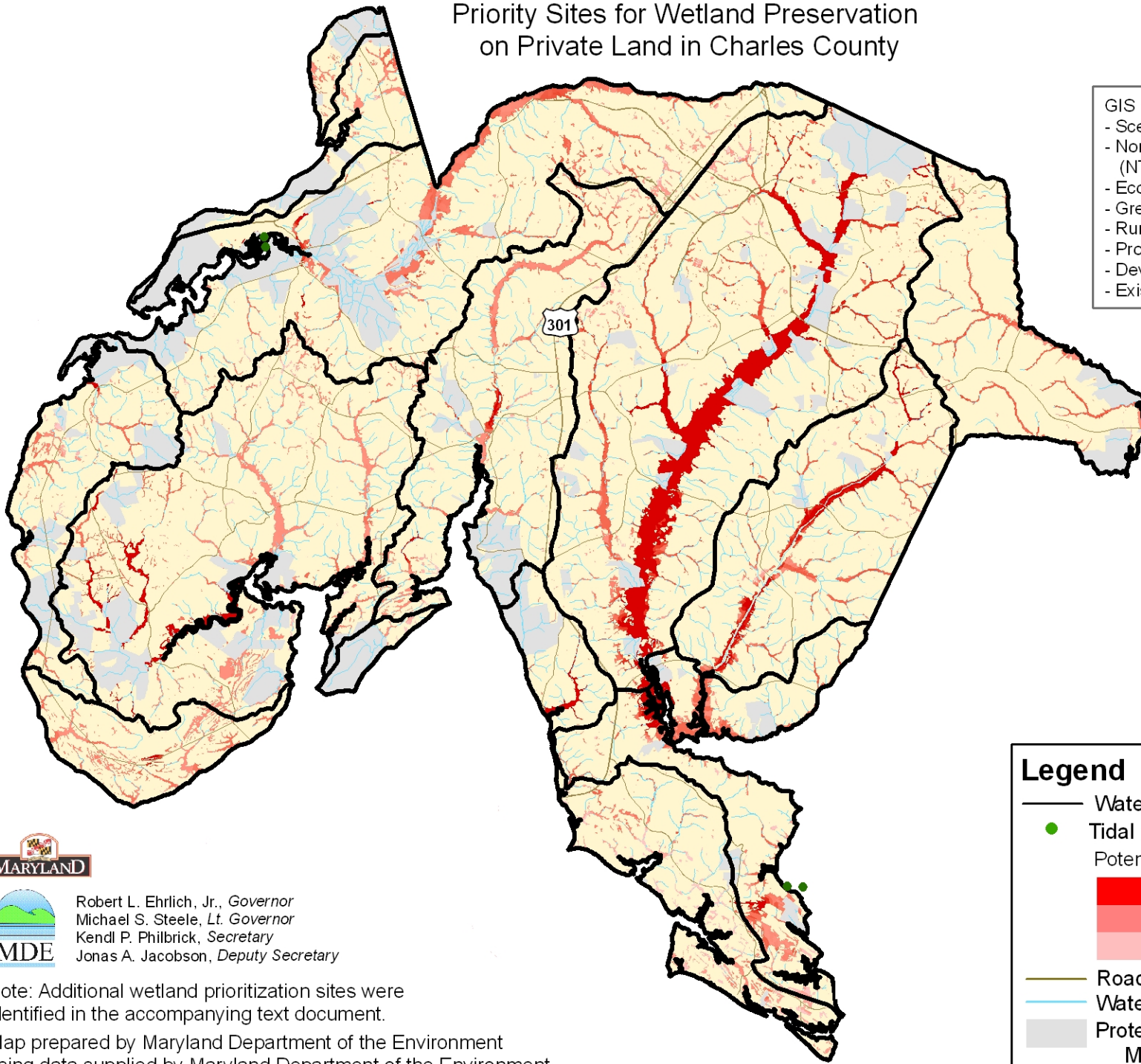
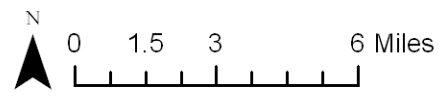


Priority Sites for Wetland Preservation on Private Land in Charles County



- GIS layers used in ranking sites:
- Scenic Rivers
 - Nontidal Wetlands of Special State Concern (NTWSSC) and potential NTWSSC
 - Ecologically Significant Areas
 - Green Infrastructure
 - Rural Legacy areas
 - Protected land
 - Development Risk
 - Existing wetlands (DNR, NWI)



Legend

- Watersheds in Charles County
- Tidal reference sites used in DNR study
- Potential wetland preservation sites
 - █ Higher ranking
 - █ Lower ranking
- Roads
- Water
- Protected land (State, Federal, County, METs, Private Conservation, Rural Legacy Easements)
- Charles County



Robert L. Ehrlich, Jr., *Governor*
 Michael S. Steele, *Lt. Governor*
 Kendl P. Philbrick, *Secretary*
 Jonas A. Jacobson, *Deputy Secretary*

Note: Additional wetland prioritization sites were identified in the accompanying text document.
 Map prepared by Maryland Department of the Environment using data supplied by Maryland Department of the Environment, Maryland Department of Natural Resources, U.S. Geological Survey, U.S. Fish and Wildlife Service, and Charles County.