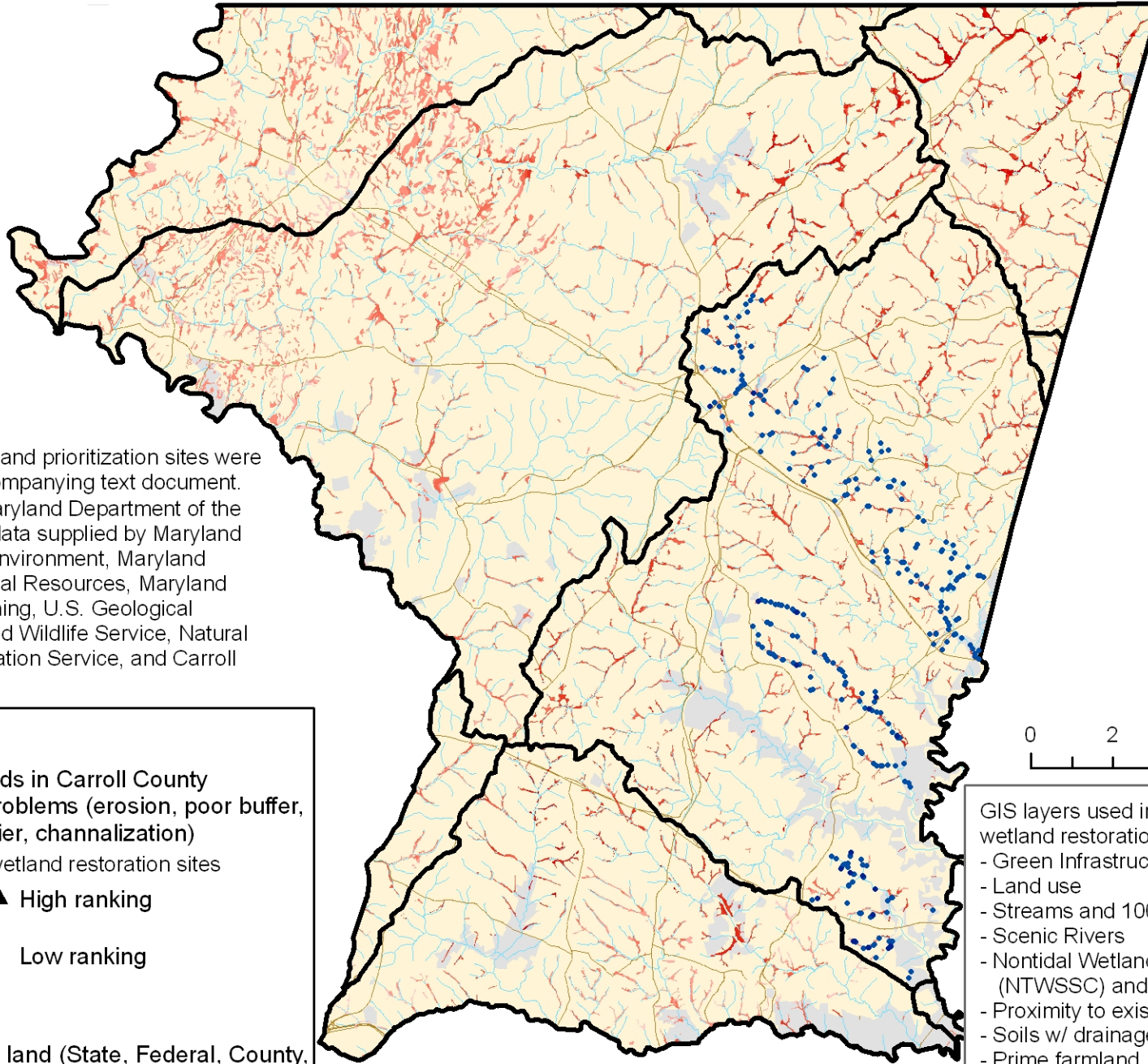






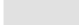



Priority Sites for Biodiversity Based Wetland Restoration in Carroll County



Note: Additional wetland prioritization sites were identified in the accompanying text document. Map prepared by Maryland Department of the Environment using data supplied by Maryland Department of the Environment, Maryland Department of Natural Resources, Maryland Department of Planning, U.S. Geological Survey, U.S. Fish and Wildlife Service, Natural Resources Conservation Service, and Carroll County.

Legend

-  Watersheds in Carroll County
-  Stream problems (erosion, poor buffer, fish barrier, channalization)
- Potential wetland restoration sites
 -  High ranking
 -  Low ranking
-  Roads
-  Water
-  Protected land (State, Federal, County, METs, Private Conservation, Rural Legacy Easements)
-  Carroll County

0 2 4 8 Miles

GIS layers used in ranking sites for potential wetland restoration:

- Green Infrastructure
- Land use
- Streams and 100m buffer
- Scenic Rivers
- Nontidal Wetlands of Special State Concern (NTWSSC) and potential NTWSSC
- Proximity to existing wetlands
- Soils w/ drainage of SPD, PD, VPD
- Prime farmland
- Reservoir watersheds
- Priority Funding Areas
- Existing wetlands (DNR, NWI)



Robert L. Ehrlich, Jr., *Governor*
 Michael S. Steele, *Lt. Governor*
 Kendl P. Philbrick, *Secretary*
 Jonas A. Jacobson, *Deputy Secretary*