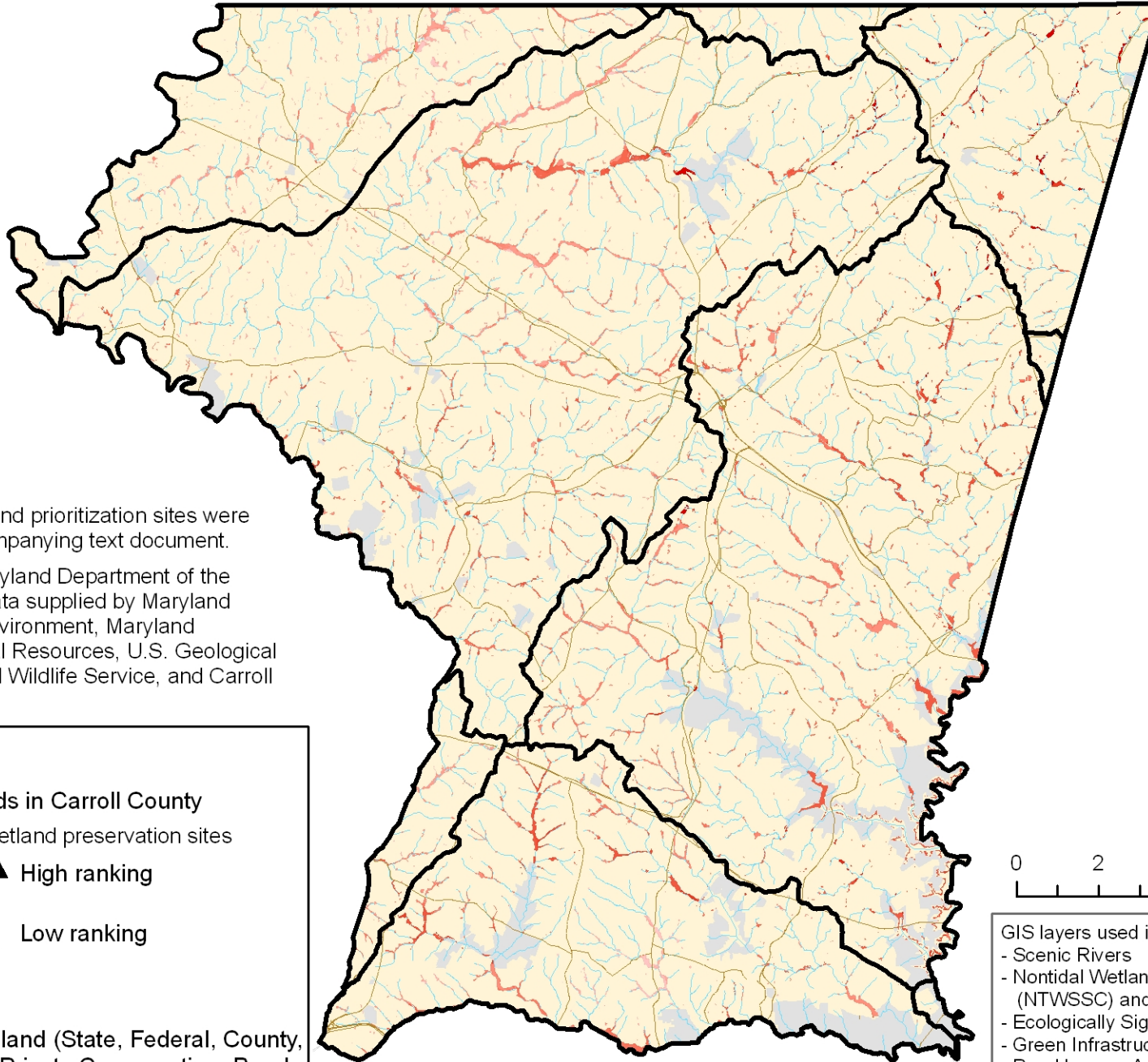









Priority Sites for Wetland Preservation on Private Land in Carroll County

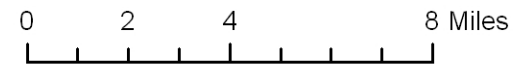


Note: Additional wetland prioritization sites were identified in the accompanying text document.

Map prepared by Maryland Department of the Environment using data supplied by Maryland Department of the Environment, Maryland Department of Natural Resources, U.S. Geological Survey, U.S. Fish and Wildlife Service, and Carroll County.

Legend

-  Watersheds in Carroll County
- Potential wetland preservation sites
 -  High ranking
 -  Low ranking
-  Roads
-  Water
-  Protected land (State, Federal, County, METs, Private Conservation, Rural Legacy Easements)
-  Carroll County



- GIS layers used in ranking sites:
- Scenic Rivers
 - Nontidal Wetlands of Special State Concern (NTWSSC) and potential NTWSSC
 - Ecologically Significant Areas
 - Green Infrastructure
 - Rural Legacy Areas
 - Protected land
 - Development risk
 - Surface water reservoirs
 - Existing wetlands (DNR, NWI)



Robert L. Ehrlich, Jr., *Governor*
 Michael S. Steele, *Lt. Governor*
 Kendl P. Philbrick, *Secretary*
 Jonas A. Jacobson, *Deputy Secretary*