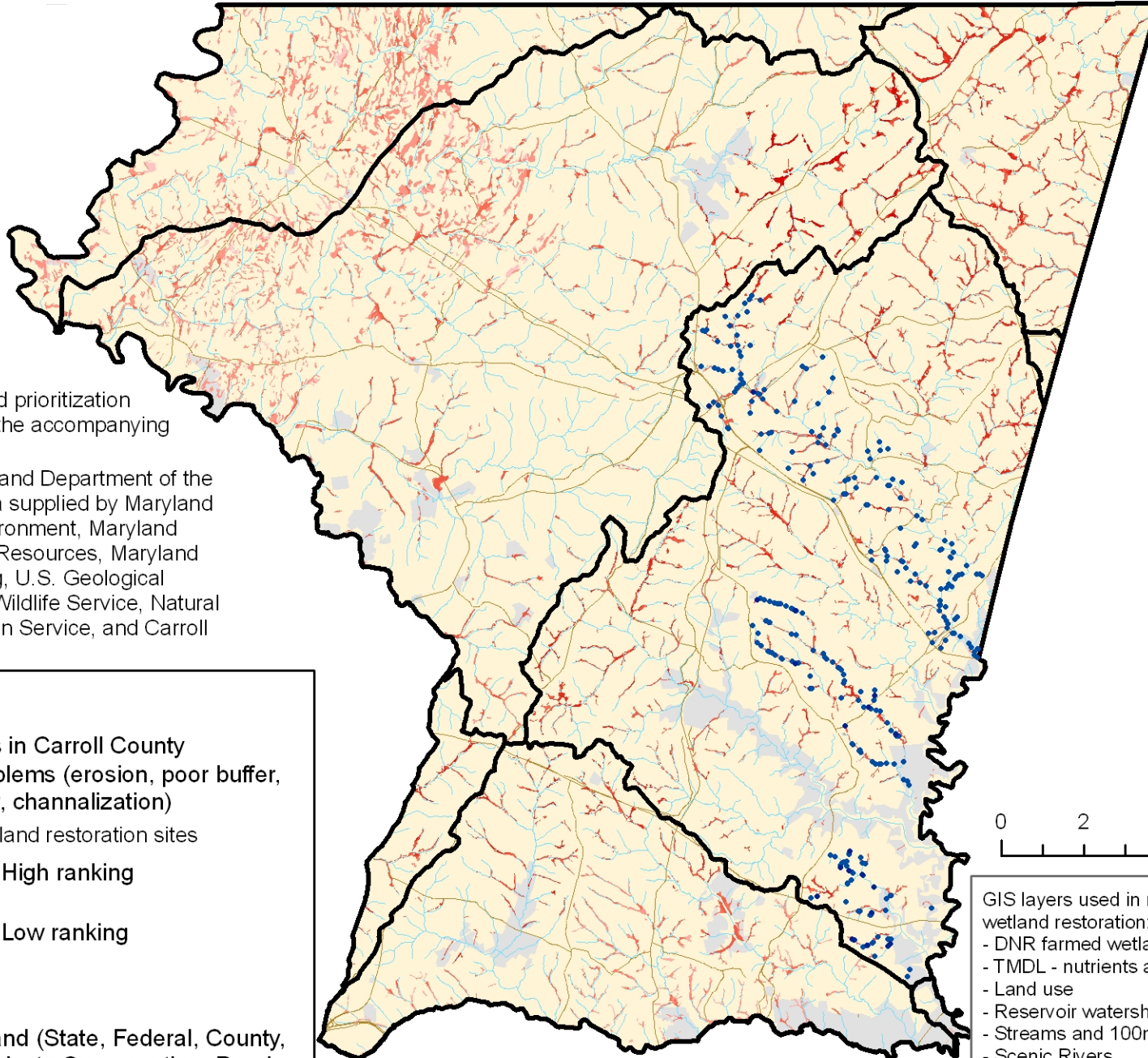





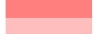


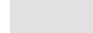

Priority Sites for Water Quality Based Wetland Restoration in Carroll County



Note: Additional wetland prioritization sites were identified in the accompanying text document.

Map prepared by Maryland Department of the Environment using data supplied by Maryland Department of the Environment, Maryland Department of Natural Resources, Maryland Department of Planning, U.S. Geological Survey, U.S. Fish and Wildlife Service, Natural Resources Conservation Service, and Carroll County.

Legend

-  Watersheds in Carroll County
-  Stream problems (erosion, poor buffer, fish barrier, channalization)
- Potential wetland restoration sites
 -  High ranking
 -  Low ranking
-  Roads
-  Water
-  Protected land (State, Federal, County, METs, Private Conservation, Rural Legacy Easements)
-  Carroll County



GIS layers used in ranking sites for potential wetland restoration:

- DNR farmed wetlands
- TMDL - nutrients and sediments
- Land use
- Reservoir watersheds
- Streams and 100m buffer
- Scenic Rivers
- Soils w/ drainage of SPD, PD, VPD
- Prime farmland
- Existing wetlands (DNR, NWI)



Robert L. Ehrlich, Jr., *Governor*
 Michael S. Steele, *Lt. Governor*
 Kendl P. Philbrick, *Secretary*
 Jonas A. Jacobson, *Deputy Secretary*