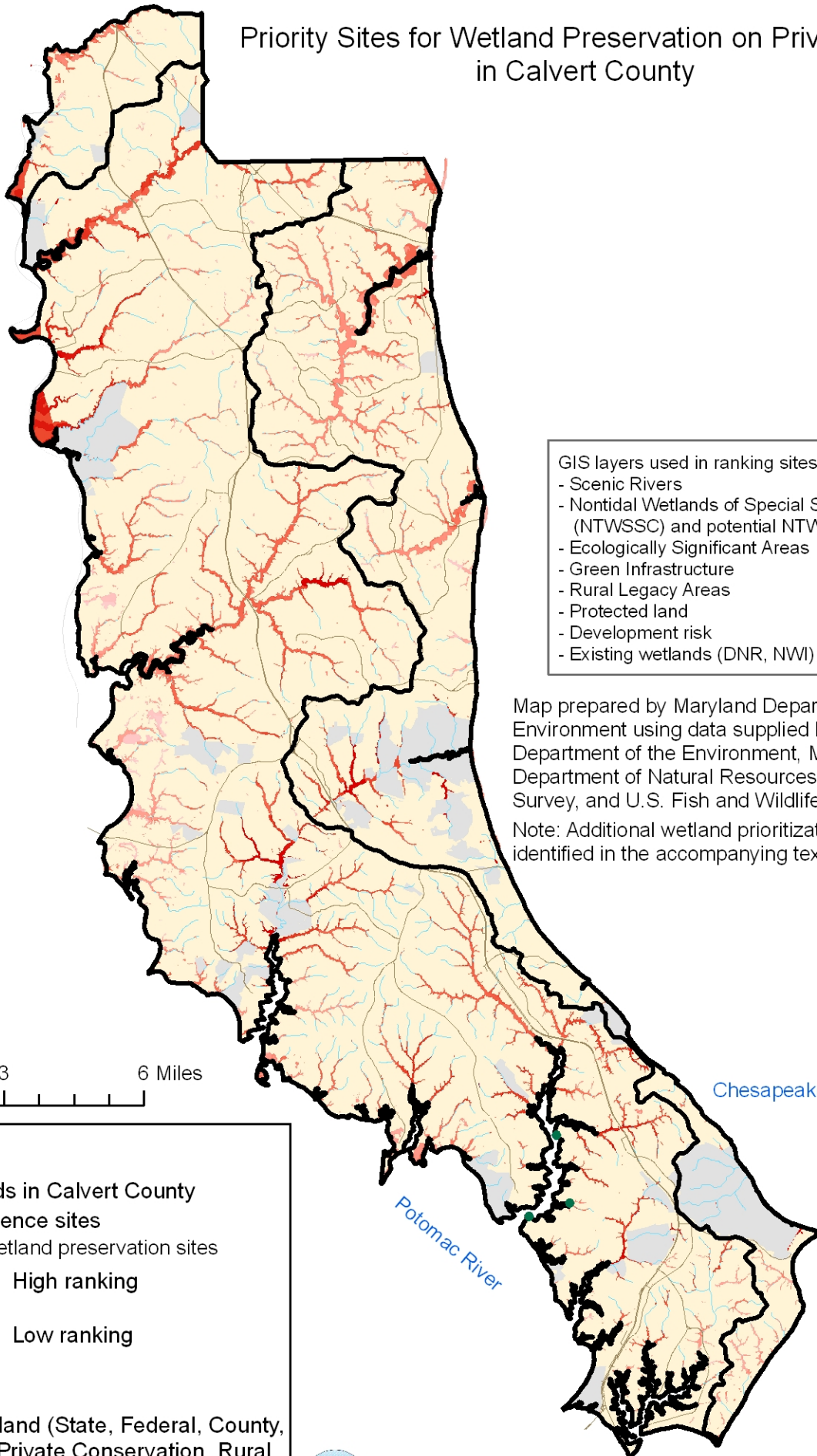


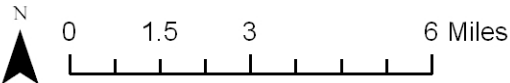
# Priority Sites for Wetland Preservation on Private Land in Calvert County



- GIS layers used in ranking sites:
- Scenic Rivers
  - Nontidal Wetlands of Special State Concern (NTWSSC) and potential NTWSSC
  - Ecologically Significant Areas
  - Green Infrastructure
  - Rural Legacy Areas
  - Protected land
  - Development risk
  - Existing wetlands (DNR, NWI)

Map prepared by Maryland Department of the Environment using data supplied by Maryland Department of the Environment, Maryland Department of Natural Resources, U.S. Geological Survey, and U.S. Fish and Wildlife Service.

Note: Additional wetland prioritization sites were identified in the accompanying text document.



**Legend**

- Watersheds in Calvert County
- Tidal reference sites
- Potential wetland preservation sites
  - High ranking (Red)
  - Low ranking (Light Red/Pink)
- Roads
- Water
- Protected land (State, Federal, County, METs, Private Conservation, Rural Legacy Easements)
- Calvert County

MDE  
 Robert L. Ehrlich, Jr., Governor  
 Michael S. Steele, Lt. Governor  
 Kend P. Philbrick, Secretary  
 Jonas A. Jacobson, Deputy Secretary

