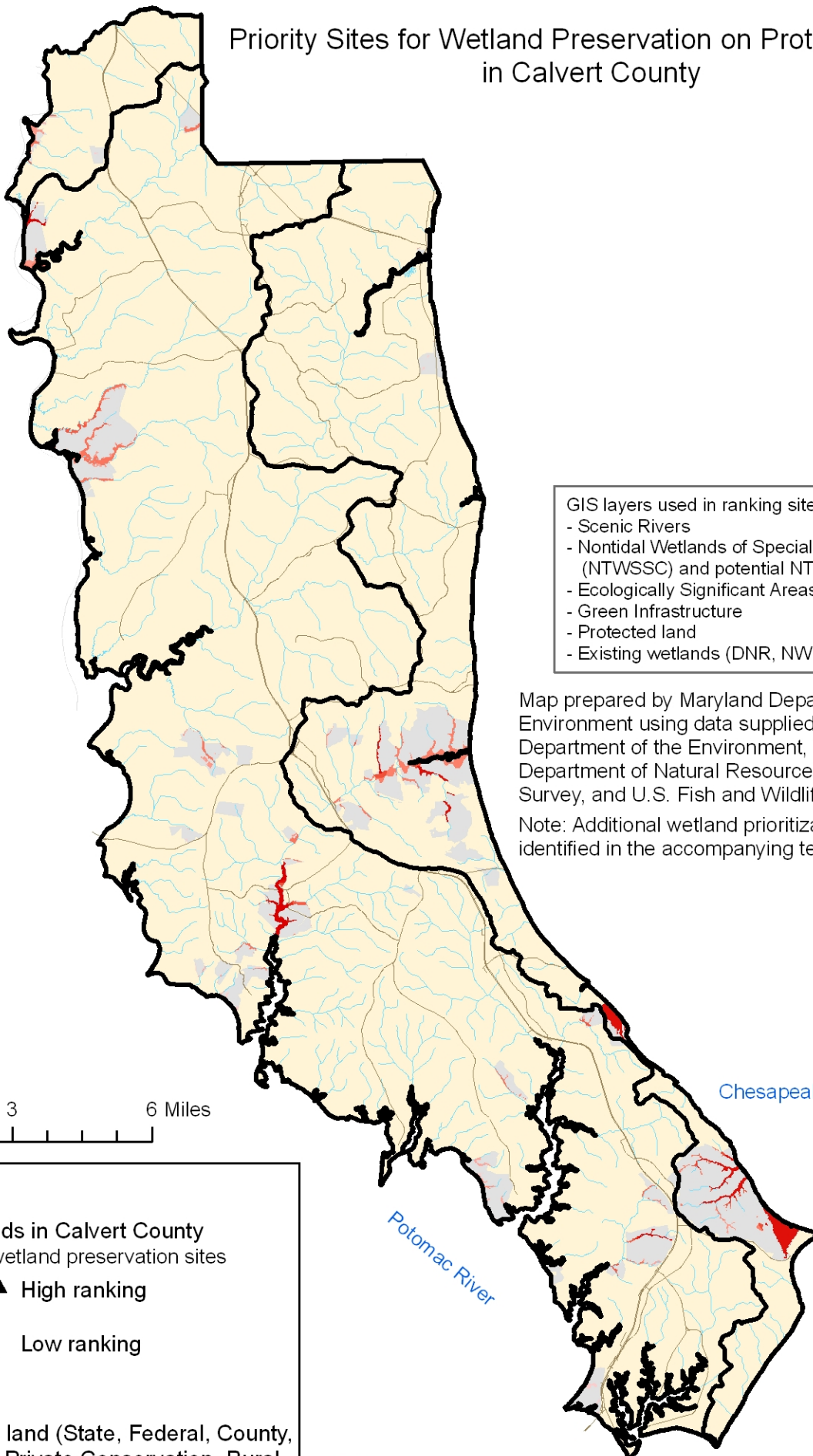


Priority Sites for Wetland Preservation on Protected Land in Calvert County



- GIS layers used in ranking sites:
- Scenic Rivers
 - Nontidal Wetlands of Special State Concern (NTWSSC) and potential NTWSSC
 - Ecologically Significant Areas
 - Green Infrastructure
 - Protected land
 - Existing wetlands (DNR, NWI)

Map prepared by Maryland Department of the Environment using data supplied by Maryland Department of the Environment, Maryland Department of Natural Resources, U.S. Geological Survey, and U.S. Fish and Wildlife Service.

Note: Additional wetland prioritization sites were identified in the accompanying text document.



Legend

- Watersheds in Calvert County
- Potential wetland preservation sites
 - ▲ High ranking
 - ▲ Low ranking
- Roads
- Water
- Protected land (State, Federal, County, METs, Private Conservation, Rural Legacy Easements)
- Calvert County

Chesapeake Bay

Potomac River



Robert L. Ehrlich, Jr., Governor
 Michael S. Steele, Lt. Governor
 Kendl P. Philbrick, Secretary
 Jonas A. Jacobson, Deputy Secretary

