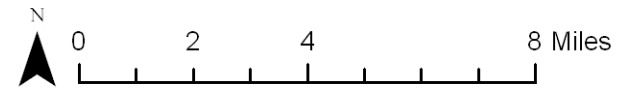
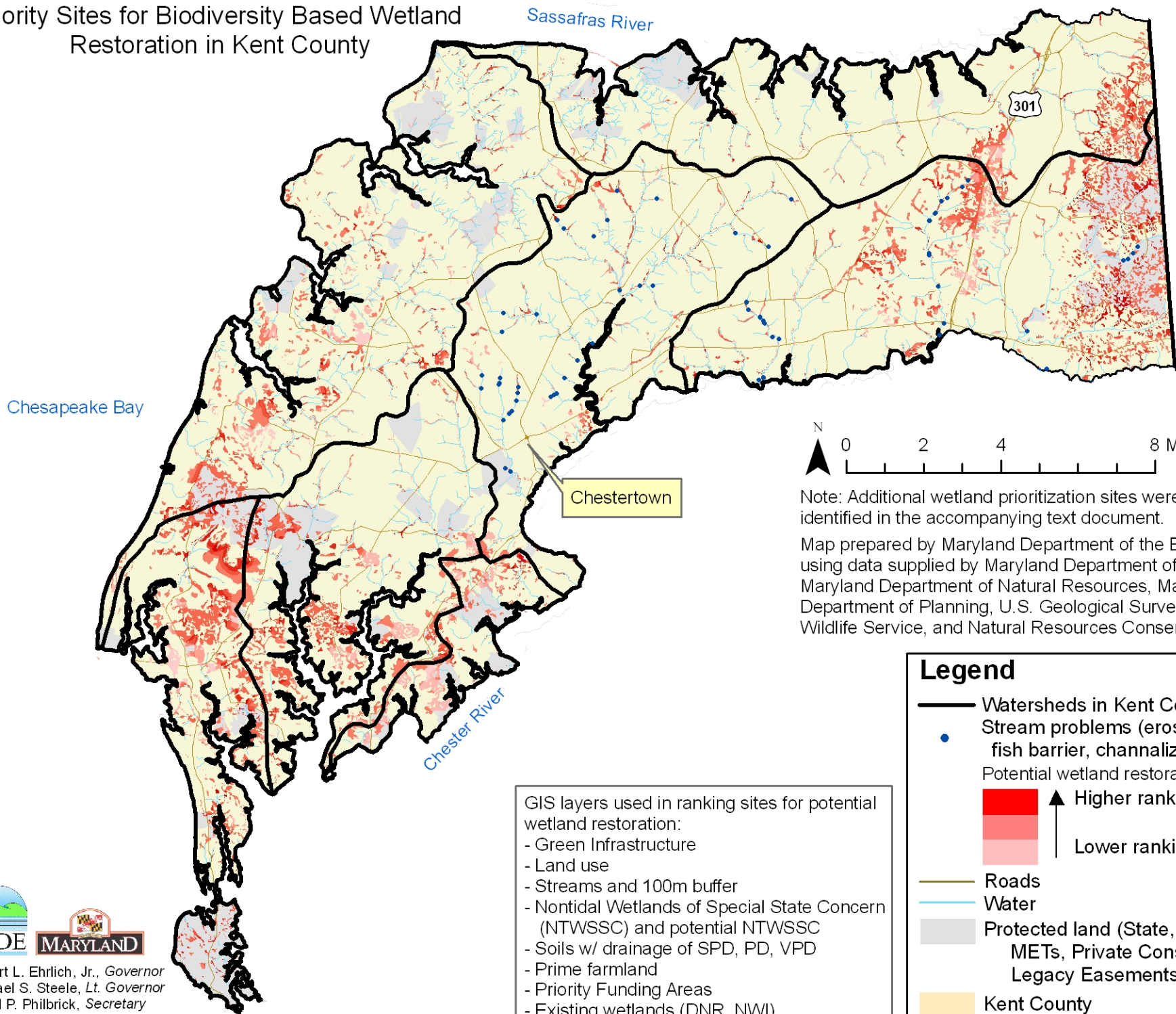


Priority Sites for Biodiversity Based Wetland Restoration in Kent County



Note: Additional wetland prioritization sites were identified in the accompanying text document.

Map prepared by Maryland Department of the Environment using data supplied by Maryland Department of the Environment, Maryland Department of Natural Resources, Maryland Department of Planning, U.S. Geological Survey, U.S. Fish and Wildlife Service, and Natural Resources Conservation Service.

- GIS layers used in ranking sites for potential wetland restoration:
- Green Infrastructure
 - Land use
 - Streams and 100m buffer
 - Nontidal Wetlands of Special State Concern (NTWSSC) and potential NTWSSC
 - Soils w/ drainage of SPD, PD, VPD
 - Prime farmland
 - Priority Funding Areas
 - Existing wetlands (DNR, NWI)

Legend

- Watersheds in Kent County
- Stream problems (erosion, poor buffer, fish barrier, channalization)
- Potential wetland restoration sites
 - ▲ Higher ranking
 - Lower ranking
- Roads
- Water
- Protected land (State, Federal, County, METs, Private Conservation, Rural Legacy Easements)
- Kent County