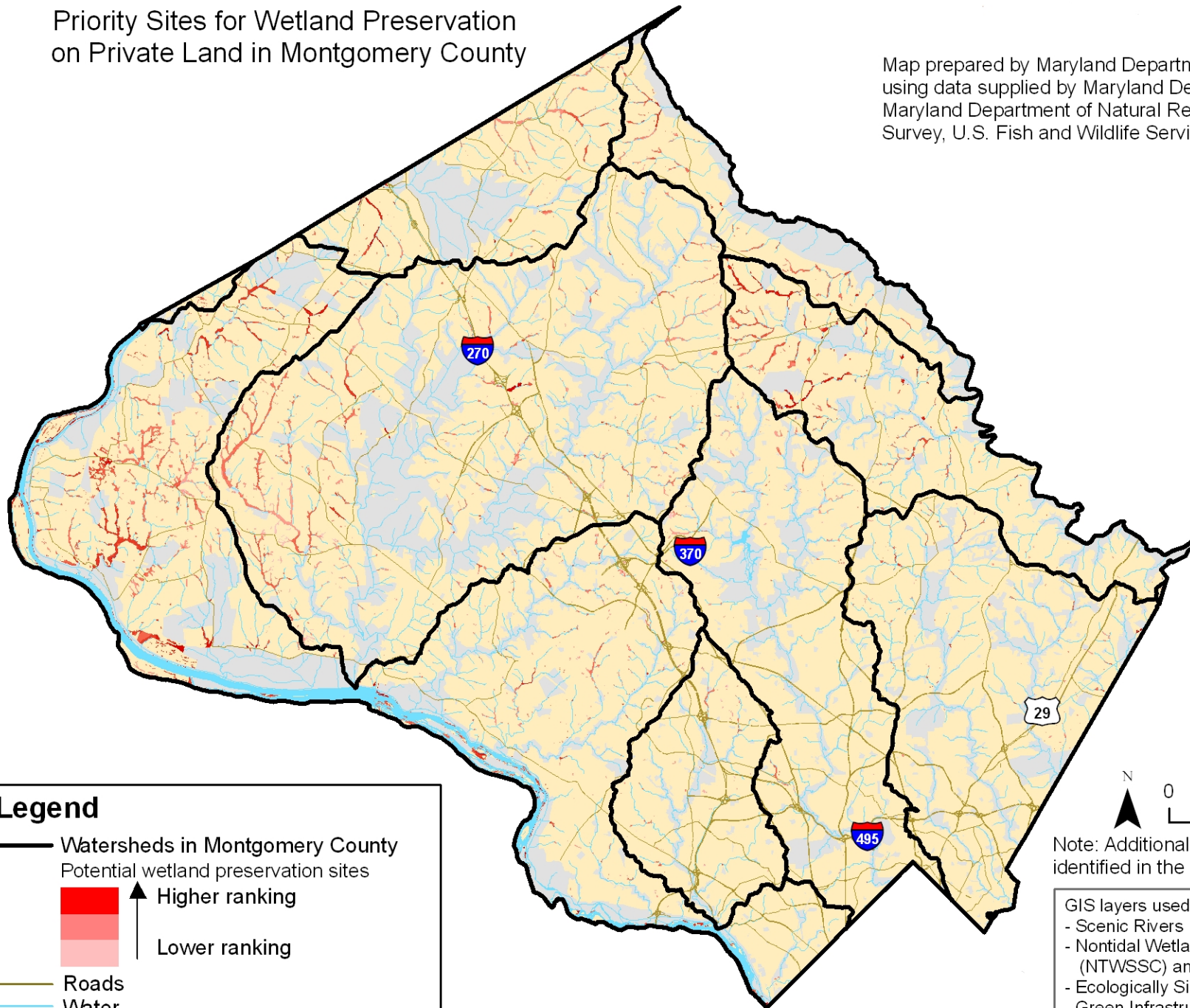






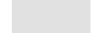



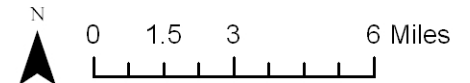
# Priority Sites for Wetland Preservation on Private Land in Montgomery County

Map prepared by Maryland Department of the Environment using data supplied by Maryland Department of the Environment, Maryland Department of Natural Resources, U.S. Geological Survey, U.S. Fish and Wildlife Service, and Montgomery County.



## Legend

-  Watersheds in Montgomery County
-  Potential wetland preservation sites
  -  Higher ranking
  -  Lower ranking
-  Roads
-  Water
-  Protected land (State, Federal, County, METs, Private Conservation, Rural Legacy Easements)
-  Montgomery County



Note: Additional wetland prioritization sites were identified in the accompanying text document.

### GIS layers used in ranking sites:

- Scenic Rivers
- Nontidal Wetlands of Special State Concern (NTWSSC) and potential NTWSSC
- Ecologically Significant Areas
- Green Infrastructure
- Rural Legacy Areas
- Protected land
- Surface water reservoirs
- Development risk
- Existing wetlands (DNR, NWI)



Robert L. Ehrlich, Jr., Governor  
 Michael S. Steele, Lt. Governor  
 Kendi P. Philbrick, Secretary  
 Jonas A. Jacobson, Deputy Secretary

