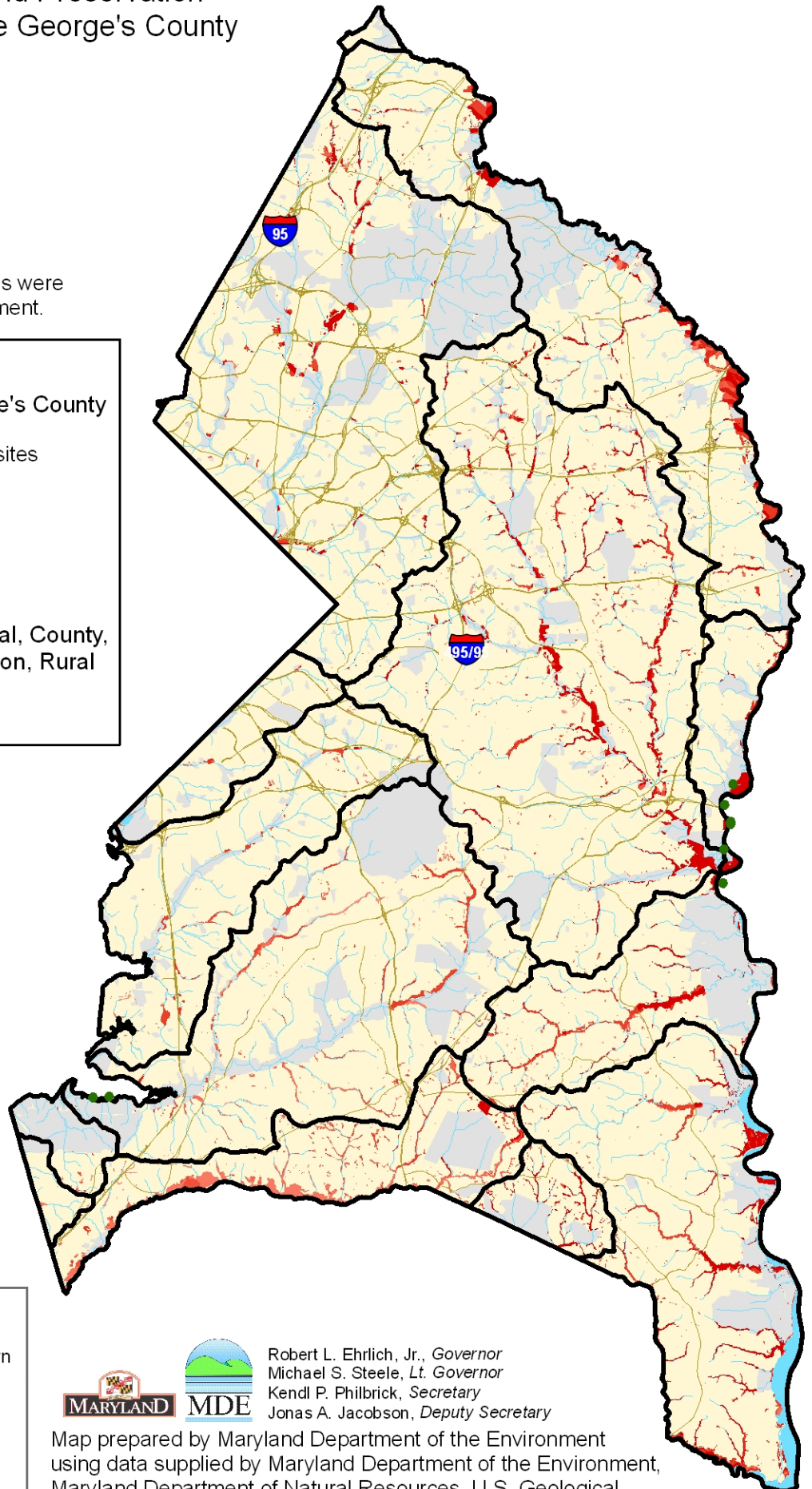
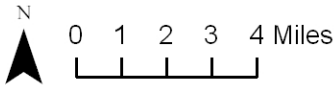


Priority Sites for Wetland Preservation on Private Land in Prince George's County

Note: Additional wetland prioritization sites were identified in the accompanying text document.

Legend

-  Watersheds in Prince George's County
-  Tidal reference sites
-  Potential wetland preservation sites
-  Higher ranking
-  Lower ranking
-  Roads
-  Water
-  Protected land (State, Federal, County, METs, Private Conservation, Rural Legacy Easements)
-  Prince George's County



GIS layers used in ranking sites:

- Scenic Rivers
- Nontidal Wetlands of Special State Concern (NTWSSC) and potential NTWSSC
- Ecologically Significant Areas
- Green Infrastructure
- Rural Legacy Areas
- Protected land
- Surface water reservoirs
- Development risk
- Existing wetlands (DNR, NWI)



Robert L. Ehrlich, Jr., *Governor*
 Michael S. Steele, *Lt. Governor*
 Kendl P. Philbrick, *Secretary*
 Jonas A. Jacobson, *Deputy Secretary*

Map prepared by Maryland Department of the Environment using data supplied by Maryland Department of the Environment, Maryland Department of Natural Resources, U.S. Geological Survey, U.S. Fish and Wildlife Service, and Prince Georges County.