





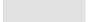

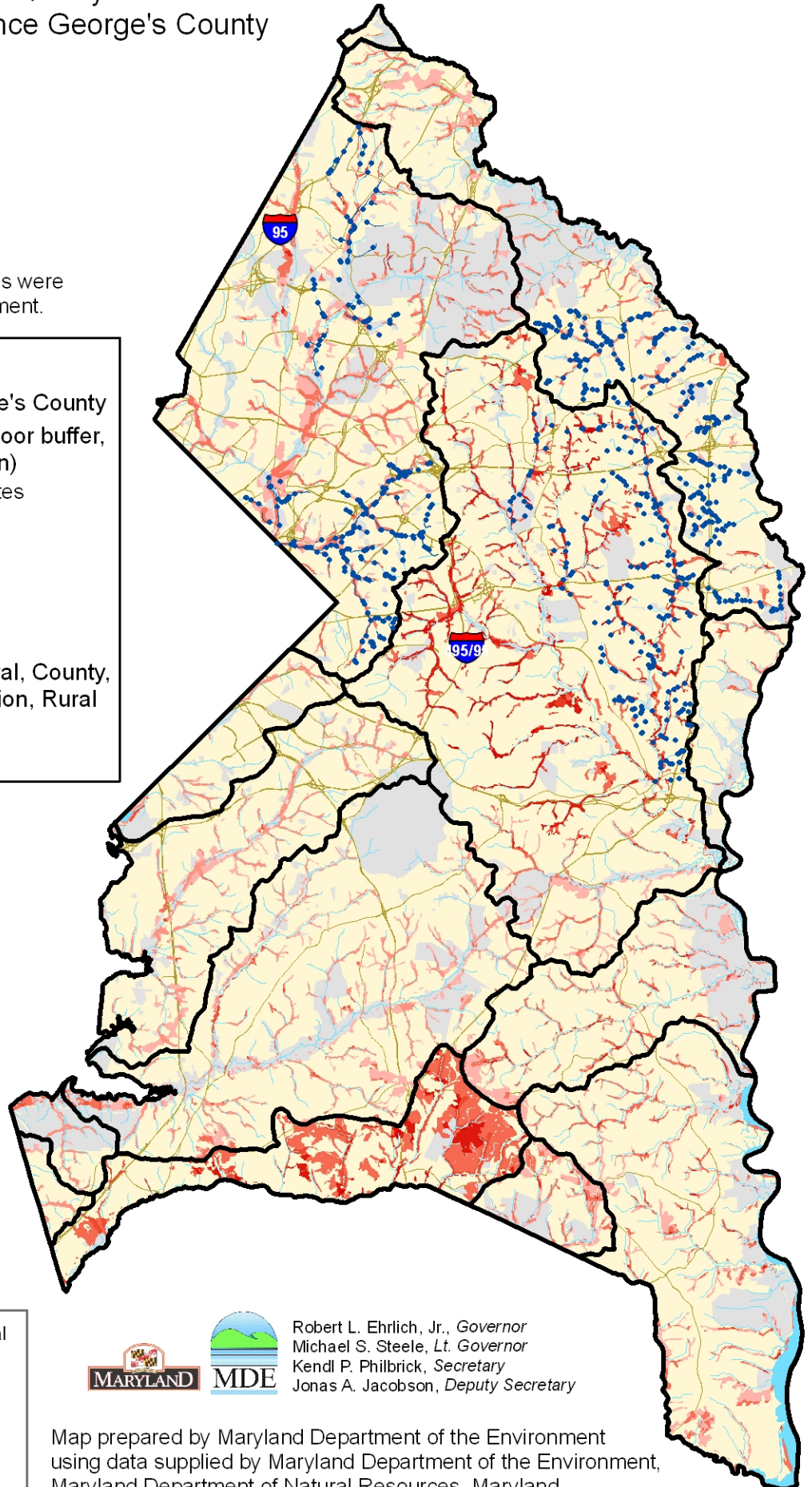
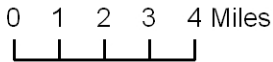


Priority Sites for Water Quality Based Wetland Restoration in Prince George's County

Note: Additional wetland prioritization sites were identified in the accompanying text document.

Legend

-  Watersheds in Prince George's County
-  Stream problems (erosion, poor buffer, fish barrier, channalization)
- Potential wetland restoration sites
 -  Higher ranking
 -  Lower ranking
-  Roads
-  Water
-  Protected land (State, Federal, County, METs, Private Conservation, Rural Legacy Easements)
-  Prince George's County



GIS layers used in ranking sites for potential wetland restoration:

- DNR farmed wetlands
- TMDL - nutrients and sediments
- Land use
- Streams and 100m buffer
- Scenic Rivers
- Soils w/ drainage of SPD, PD, VPD
- Prime farmland
- Existing wetlands (DNR, NWI)



Robert L. Ehrlich, Jr., *Governor*
 Michael S. Steele, *Lt. Governor*
 Kendl P. Philbrick, *Secretary*
 Jonas A. Jacobson, *Deputy Secretary*

Map prepared by Maryland Department of the Environment using data supplied by Maryland Department of the Environment, Maryland Department of Natural Resources, Maryland Department of Planning, U.S. Geological Survey, U.S. Fish and Wildlife Service, and Prince Georges County.