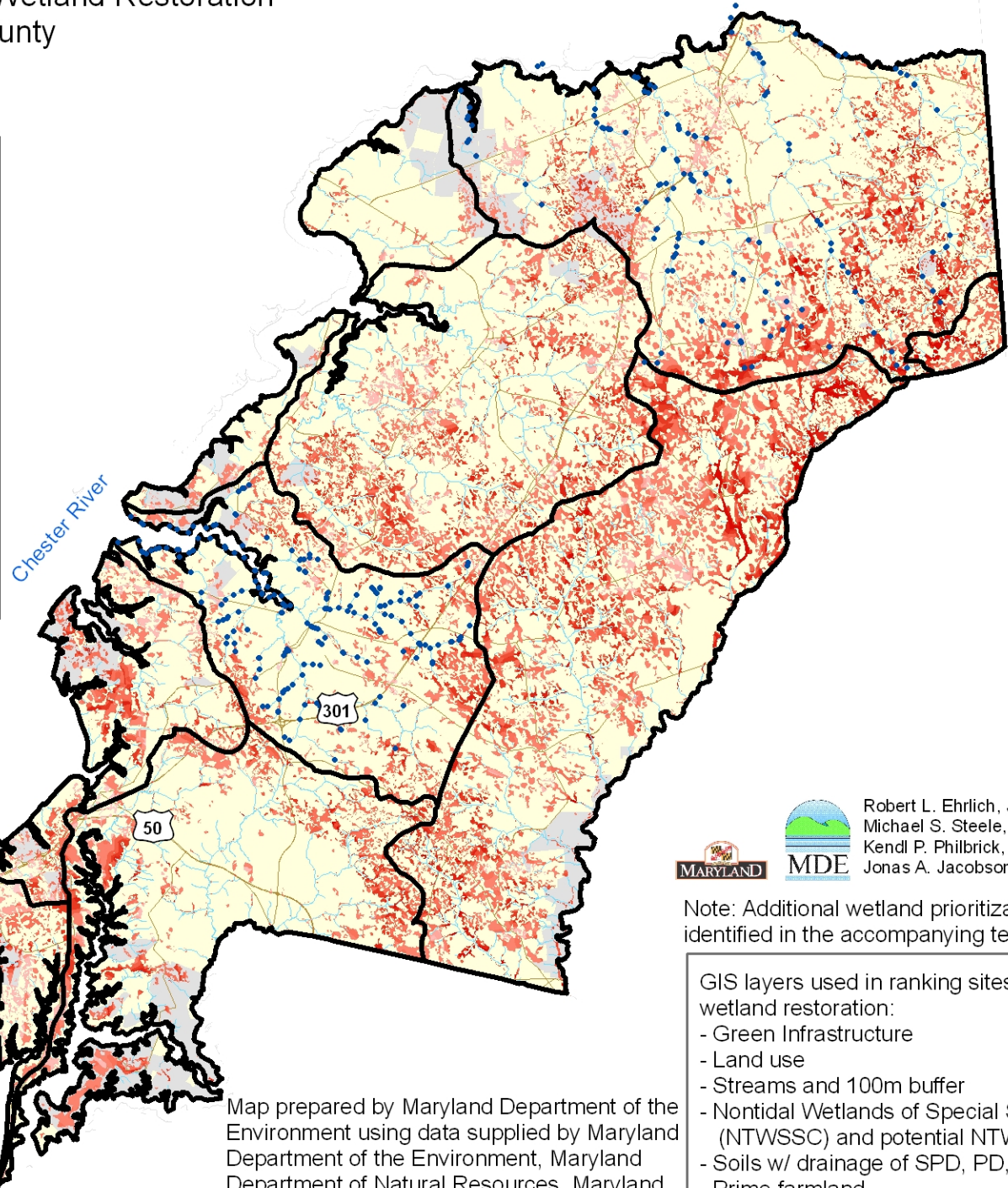
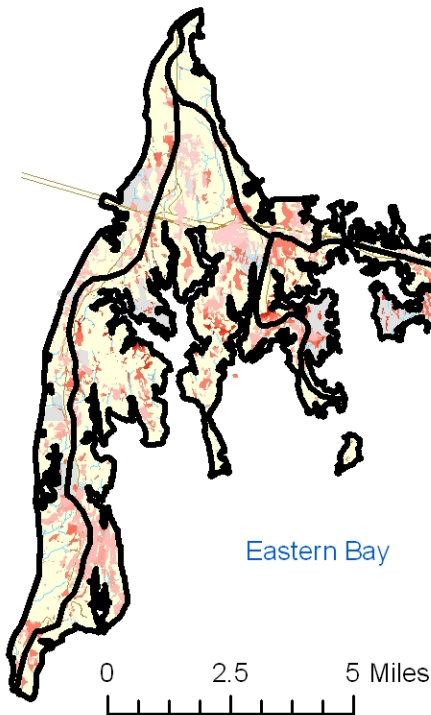




Priority Sites for Biodiversity Based Wetland Restoration in Queen Anne's County

Legend

- Watersheds in Queen Anne's County
- Stream problems (erosion, poor buffer, fish barrier, channalization)
- Potential wetland restoration sites
 - High ranking
 - Low ranking
- Roads
- Water
- Protected land (State, Federal, County, METs, Private Conservation, Rural Legacy Easements)
- Queen Anne's County





 Robert L. Ehrlich, Jr., *Governor*
 Michael S. Steele, *Lt. Governor*
 Kendl P. Philbrick, *Secretary*
 Jonas A. Jacobson, *Deputy Secretary*

Note: Additional wetland prioritization sites were identified in the accompanying text document.

- GIS layers used in ranking sites for potential wetland restoration:
- Green Infrastructure
 - Land use
 - Streams and 100m buffer
 - Nontidal Wetlands of Special State Concern (NTWSSC) and potential NTWSSC
 - Soils w/ drainage of SPD, PD, VPD
 - Prime farmland
 - Priority Funding Areas
 - Existing wetlands (DNR, NWI)

Map prepared by Maryland Department of the Environment using data supplied by Maryland Department of the Environment, Maryland Department of Natural Resources, Maryland Department of Planning, U.S. Geological Survey, U.S. Fish and Wildlife Service, and Natural Resources Conservation Service.