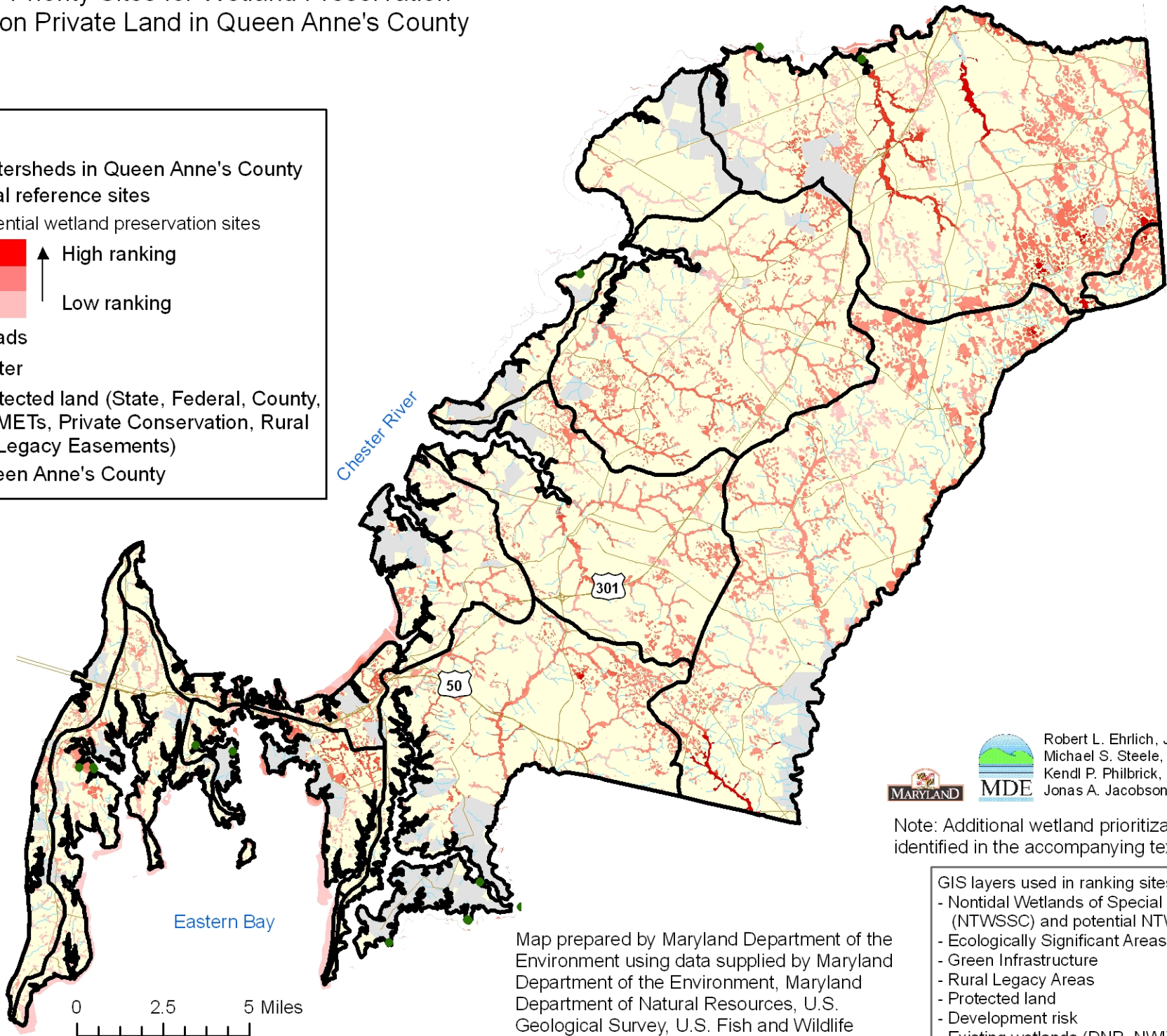




Priority Sites for Wetland Preservation on Private Land in Queen Anne's County

Legend

- Watersheds in Queen Anne's County
- Tidal reference sites
- Potential wetland preservation sites
 - High ranking
 - Low ranking
- Roads
- Water
- Protected land (State, Federal, County, METs, Private Conservation, Rural Legacy Easements)
- Queen Anne's County





 Robert L. Ehrlich, Jr., *Governor*
 Michael S. Steele, *Lt. Governor*
 Kendl P. Philbrick, *Secretary*
 Jonas A. Jacobson, *Deputy Secretary*

Note: Additional wetland prioritization sites were identified in the accompanying text document.

- GIS layers used in ranking sites:
- Nontidal Wetlands of Special State Concern (NTWSSC) and potential NTWSSC
 - Ecologically Significant Areas
 - Green Infrastructure
 - Rural Legacy Areas
 - Protected land
 - Development risk
 - Existing wetlands (DNR, NWI)

Map prepared by Maryland Department of the Environment using data supplied by Maryland Department of the Environment, Maryland Department of Natural Resources, U.S. Geological Survey, U.S. Fish and Wildlife Service.