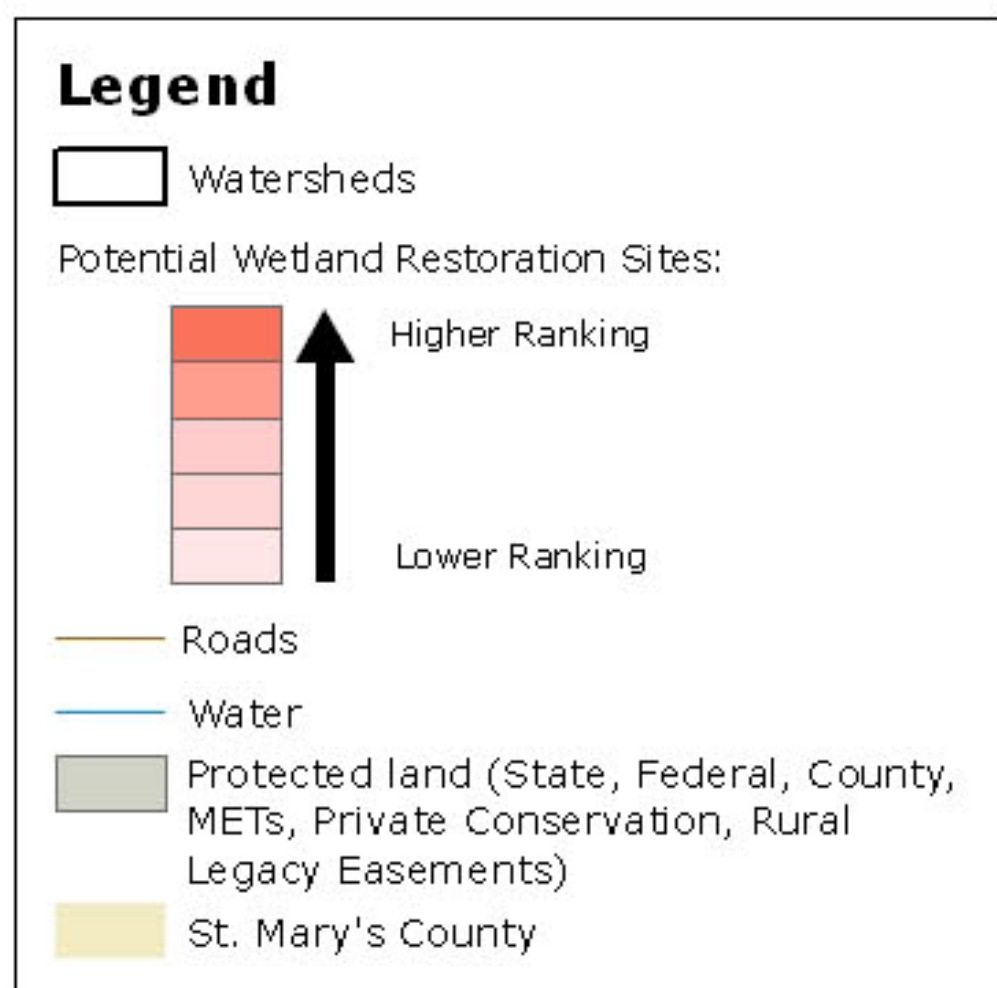
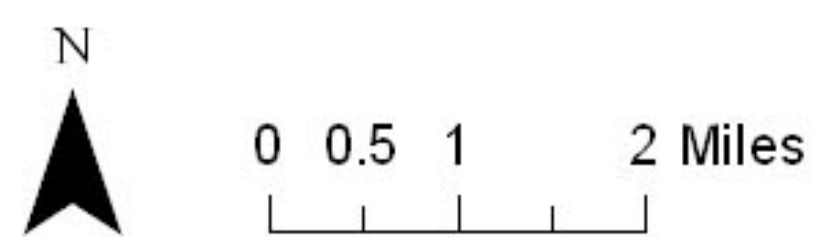
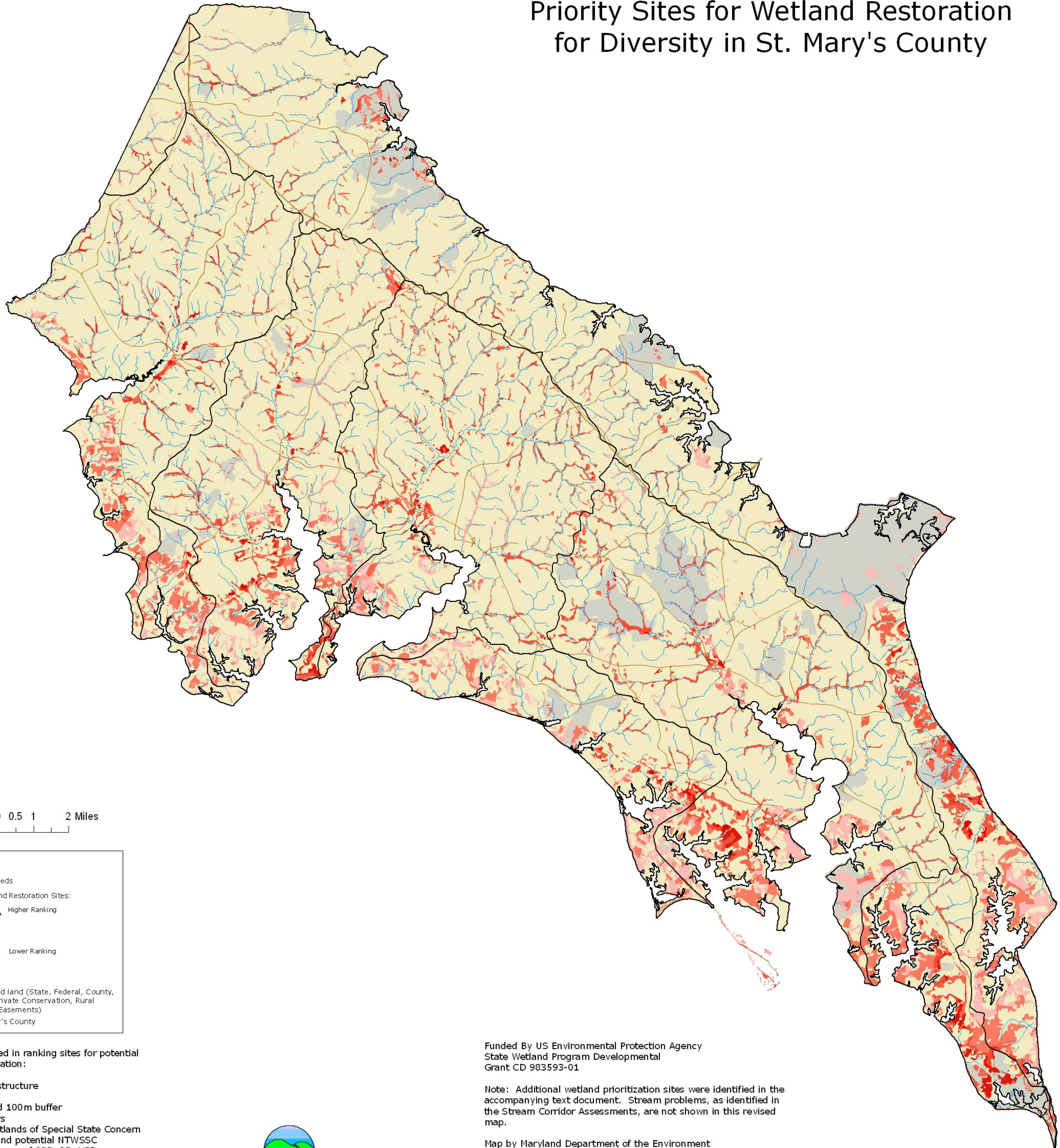


Priority Sites for Wetland Restoration for Diversity in St. Mary's County



GIS Layers used in ranking sites for potential wetland restoration:

- Green Infrastructure
- Land use
- Streams and 100m buffer
- Scenic Rivers
- Nontidal Wetlands of Special State Concern (NTWSSC) and potential NTWSSC
- Soils w/drainage of SPD, PD, VPD
- Prime farmland
- Priority Funding Areas
- Existing Wetlands (DNR, IWI)



Martin O'Malley Governor
Anthony G. Brown Lt. Governor
Shari T. Wilson Secretary
Robert M. Summers, Ph.D. Deputy Secretary

Funded By US Environmental Protection Agency
State Wetland Program Developmental
Grant CD 983593-01

Note: Additional wetland prioritization sites were identified in the accompanying text document. Stream problems, as identified in the Stream Corridor Assessments, are not shown in this revised map.

Map by Maryland Department of the Environment
using data supplied by Maryland Department of the Environment,
Maryland Department of Natural Resources, Maryland
Department of Planning, U.S. Geological Survey, U.S. Fish and
Wildlife Service, and Natural Resources Conservation Service.