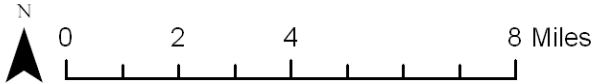
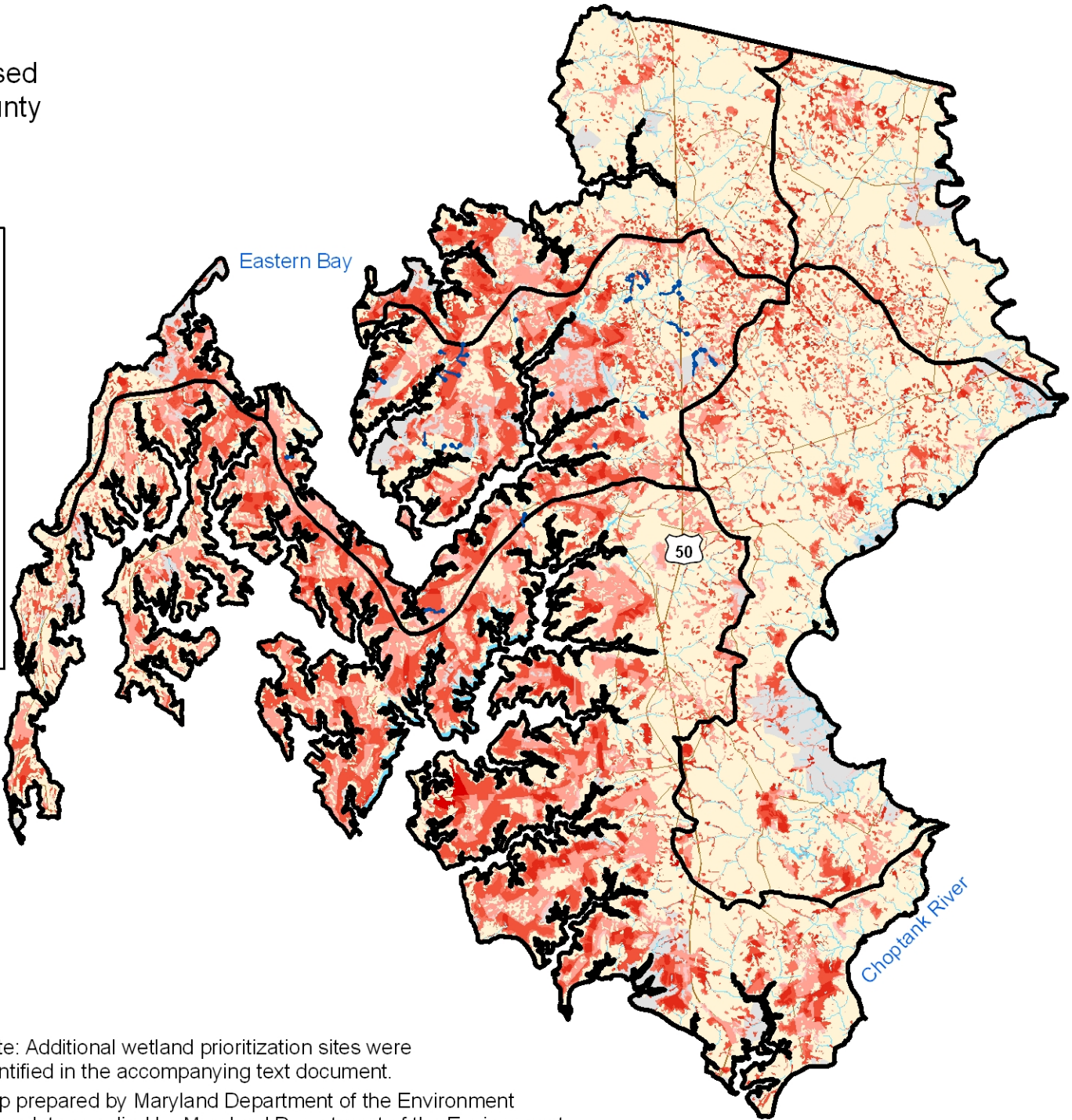


# Priority Sites for Water Quality Based Wetland Restoration in Talbot County

**Legend**

- Watersheds in Talbot County
- Stream problems (erosion, poor buffer, fish barrier, channalization)
- Potential wetland restoration sites
  - ▲ Higher ranking
  - ▲ Lower ranking
- Roads
- Water
- Protected land (State, Federal, County, METs, Private Conservation, Rural Legacy Easements)
- Talbot County



GIS layers used in ranking sites for potential wetland restoration:

- DNR farmed wetlands
- TMDL - nutrients and sediments
- Land use
- Streams and 100m buffer
- Soils w/ drainage of SPD, PD, VPD
- Prime farmland
- Existing wetlands (DNR, NWI)

Note: Additional wetland prioritization sites were identified in the accompanying text document.

Map prepared by Maryland Department of the Environment using data supplied by Maryland Department of the Environment, Maryland Department of Natural Resources, Maryland Department of Planning, U.S. Geological Survey, U.S. Fish and Wildlife Service, and Natural Resources Conservation Service.