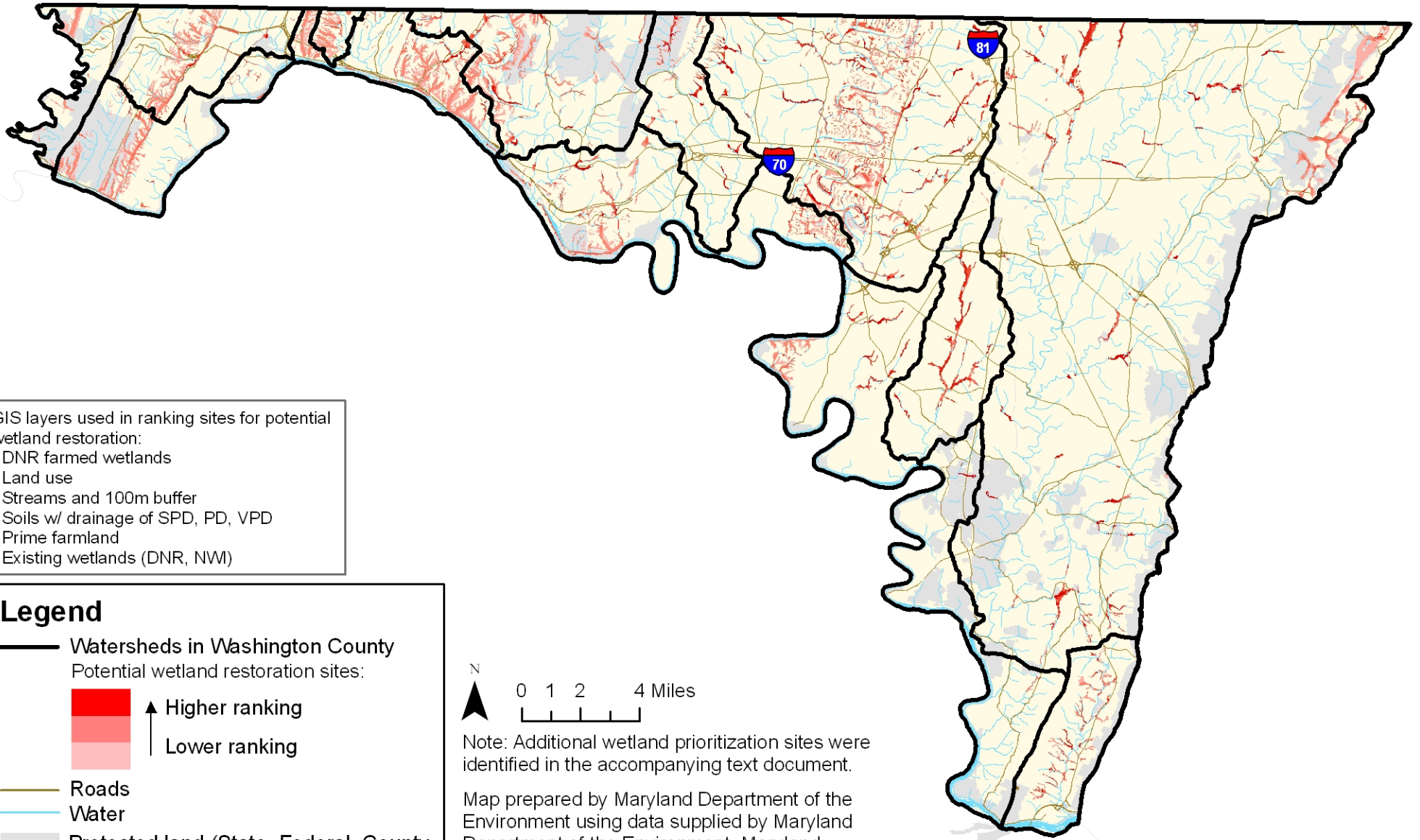


Priority Sites for Water Quality Based Wetland Restoration in Washington County

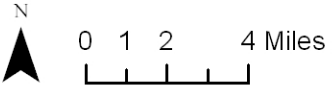


GIS layers used in ranking sites for potential wetland restoration:

- DNR farmed wetlands
- Land use
- Streams and 100m buffer
- Soils w/ drainage of SPD, PD, VPD
- Prime farmland
- Existing wetlands (DNR, NWI)

Legend

- Watersheds in Washington County
- Potential wetland restoration sites:
 - Higher ranking
 - Lower ranking
- Roads
- Water
- Protected land (State, Federal, County, METs, Private Conservation, Rural Legacy Easements)
- Washington County



Note: Additional wetland prioritization sites were identified in the accompanying text document.

Map prepared by Maryland Department of the Environment using data supplied by Maryland Department of the Environment, Maryland Department of Natural Resources, Maryland Department of Planning, U.S. Geological Survey, U.S. Fish and Wildlife Service, and Natural Resources Conservation Service.