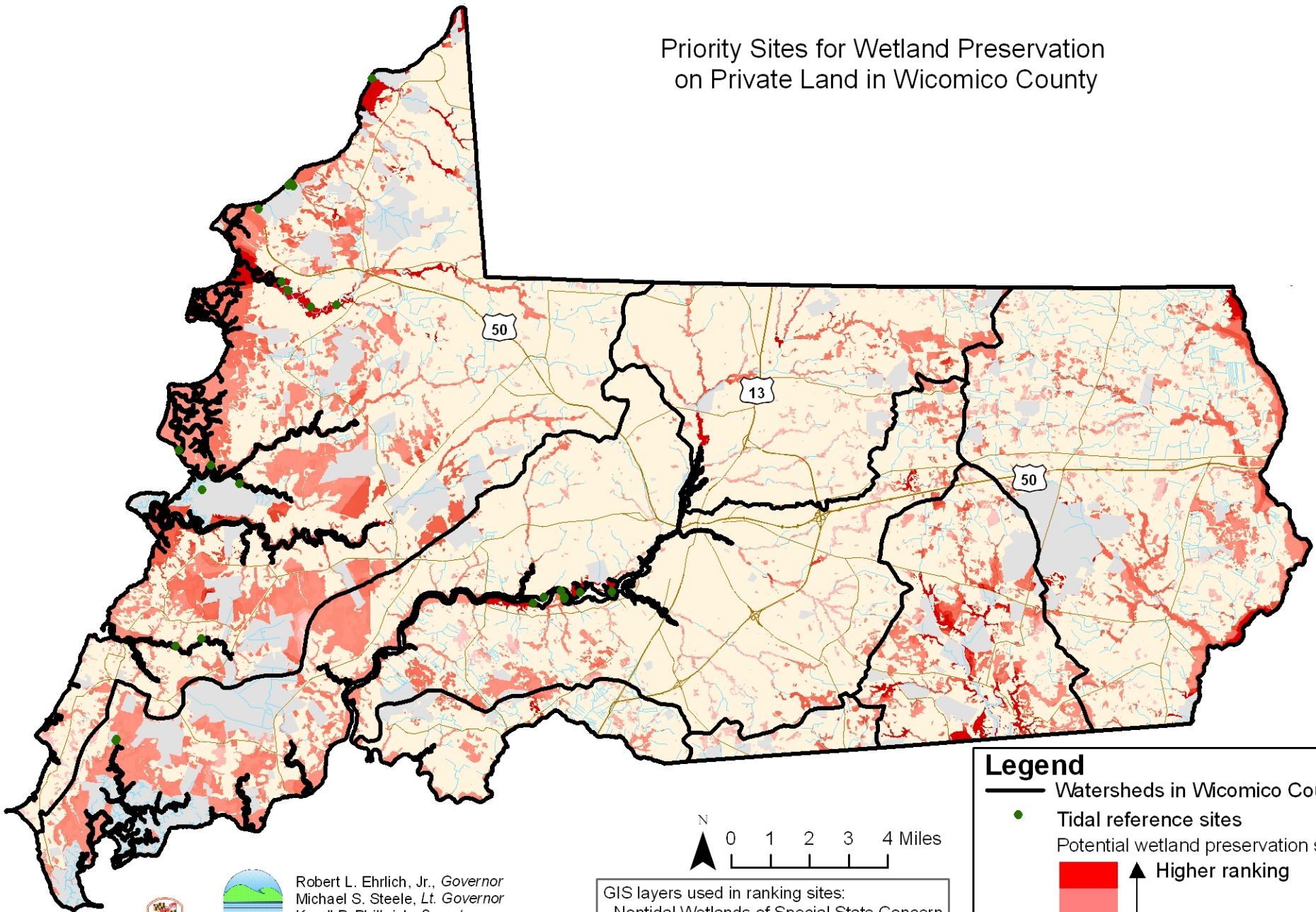




Priority Sites for Wetland Preservation on Private Land in Wicomico County





 Robert L. Ehrlich, Jr., *Governor*
 Michael S. Steele, *Lt. Governor*
 Kendl P. Philbrick, *Secretary*
 Jonas A. Jacobson, *Deputy Secretary*

- GIS layers used in ranking sites:
- Nontidal Wetlands of Special State Concern (NTWSSC) and potential NTWSSC
 - Ecologically Significant Areas
 - Green Infrastructure
 - Rural Legacy Areas
 - Protected land
 - Scenic Rivers
 - Development risk
 - Existing wetlands (DNR, NWM)

Legend

- Watersheds in Wicomico County
- Tidal reference sites
- Potential wetland preservation sites
 - Higher ranking (Dark Red)
 - Lower ranking (Light Red)
- Roads
- Water
- Protected land (State, Federal, County, METs, Private Conservation, Rural Legacy Easements)
- Wicomico County

Note: Additional wetland prioritization sites were identified in the accompanying text document.

Map prepared by Maryland Department of the Environment using data supplied by Maryland Department of the Environment, Maryland Department of Natural Resources, U.S. Geological Survey, and U.S. Fish and Wildlife Service.