

# Priority Sites for Wetland Preservation on Protected Land in the Pocomoke Watershed of Worcester County

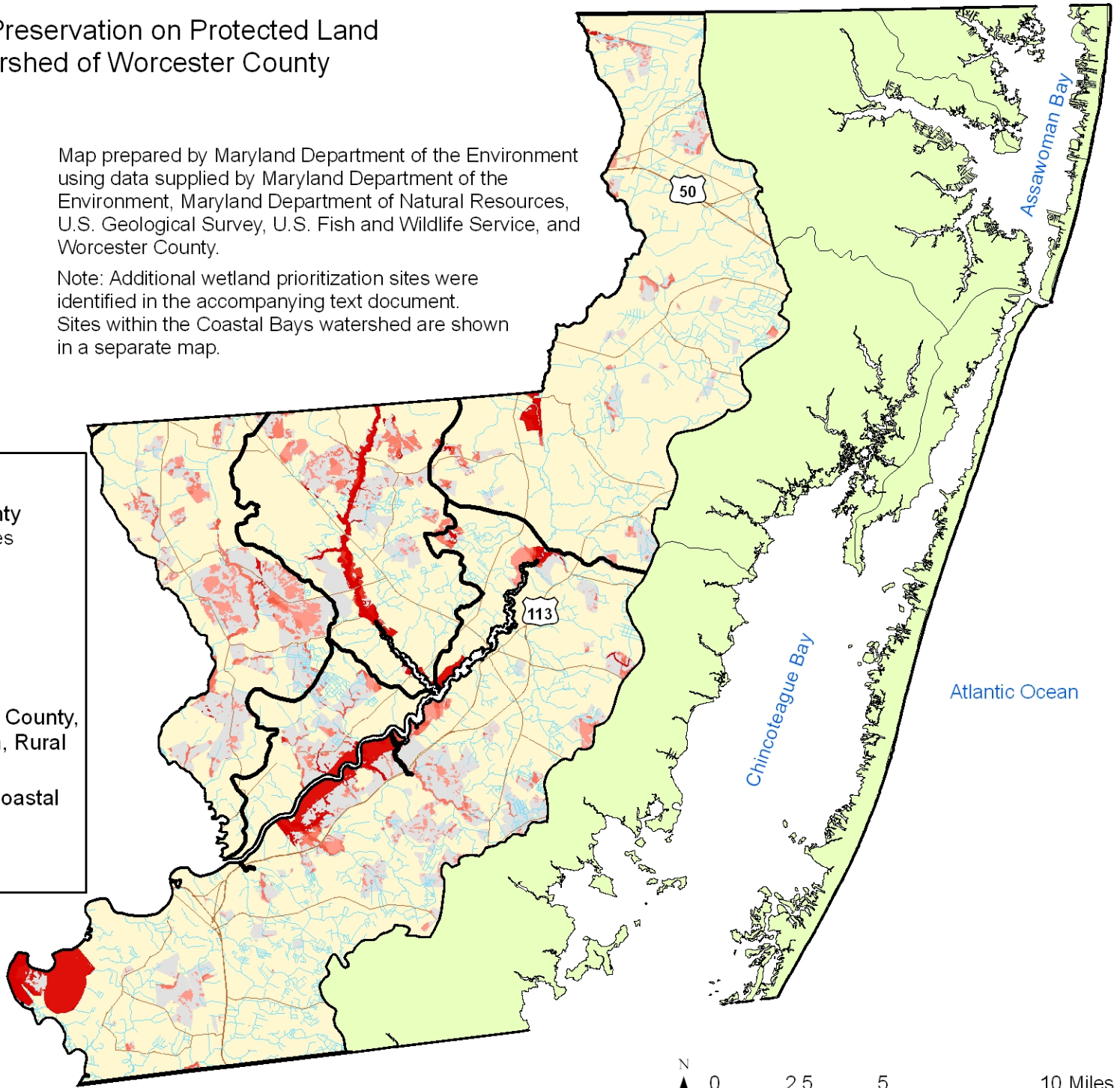
Map prepared by Maryland Department of the Environment using data supplied by Maryland Department of the Environment, Maryland Department of Natural Resources, U.S. Geological Survey, U.S. Fish and Wildlife Service, and Worcester County.

Note: Additional wetland prioritization sites were identified in the accompanying text document. Sites within the Coastal Bays watershed are shown in a separate map.

- GIS layers used in ranking sites:
- Nontidal Wetlands of Special State Concern (NTWSSC) and potential NTWSSC
  - Ecologically Significant Areas
  - Green Infrastructure
  - Protected land
  - Scenic Rivers
  - Existing wetlands (DNR, NWI)

**Legend**

- Watersheds in Worcester County
- Potential wetland preservation sites
  - Higher ranking
  - Lower ranking
- Roads
- Water
- Protected land (State, Federal, County, METs, Private Conservation, Rural Legacy Easements)
- Worcester County, excluding Coastal Bays watershed
- Coastal Bays watershed within Worcester County



Robert L. Ehrlich, Jr., *Governor*  
 Michael S. Steele, *Lt. Governor*  
 Kendl P. Philbrick, *Secretary*  
 Jonas A. Jacobson, *Deputy Secretary*

