

	IMPACT TOTALS	
	TEMPORARY	PERMANENT
PFO WETLAND CLEARED & REPLANTED	6.019 SF	0 SF
PFO WETLAND GRADED & REPLACED	3.019 SF	0 SF
PSS WETLAND	0 SF	0 SF
PEM WETLAND	0 SF	0 SF
PERENNIAL WUS	316 LF/ 10,571 SF	78 LF/ 1,114 SF
INTERMITTENT WUS	73 LF/ 448 SF	868 LF/ 6,131 SF
EPHEMERAL WUS	0 LF/ 0 SF	167 LF/ 1,460 SF
WETLAND BUFFER	2,261 SF	0 SF
100-YEAR FLOODPLAIN	15,774 SF	0 SF

VICINITY MAP

I-95 ETL NORTHBOUND EXTENSION
 CARSENS RUN STREAM MITIGATION
 JOHN F. KENNEDY MEMORIAL HIGHWAY
 HARFORD COUNTY, MARYLAND

MARYLAND
TRANSPORTATION AUTHORITY

SCALE: 1" = 2,000'	DATE: REV. JAN. 2021
CONTRACT NO.: KH-3028	PLATE 1 OF 9

KH-3028 Carsins Run WUS Impact Summary Table

Plate	Resource ID	Perennial WUS				Intermittent WUS				Ephemeral WUS				100-Year Floodplain	
		Temporary		Permanent		Temporary		Permanent		Temporary		Permanent		Temporary	Permanent
		LF	SF	LF	SF	LF	SF	LF	SF	LF	SF	LF	SF	SF	SF
PLATE 5	WUS WL003	0	0	0	0	0	0	58	394	0	0	0	0	0	0
PLATE 6	WUS WL003	0	0	0	0	73	448	251	1,672	0	0	0	0	0	0
PLATE 7	WUS WL003	0	0	0	0	0	0	462	3,461	0	0	0	0	406	0
PLATE 8	Waterway WL002	0	0	0	0	0	0	0	0	0	0	14	118	3,293	0
PLATE 8	WUS WL001	81	3,478	50	1,035	0	0	0	0	0	0	0	0		
PLATE 9	Waterway WL004	0	0	0	0	0	0	0	0	0	0	153	1,342	12,075	0
PLATE 9	WUS WL001	235	7,093	28	79	0	0	0	0	0	0	0	0		
PLATE 9	WUS WL003	0	0	0	0	0	0	97	604	0	0	0	0		
Total		316	10,571	78	1,114	73	448	868	6,131	0	0	167	1,460	15,774	0

KH-3028 Carsins Run Wetland Impact Summary Table					
Plate	Resource ID	PFO Wetland		25-foot Wetland Buffer	
		Temporary	Permanent	Temporary	Permanent
		SF	SF	SF	SF
PLATE 5	WETLAND WL007	4,505	0	988	0
PLATE 6	WETLAND WL007	4,533	0	1,273	0
Total		9,038	0	2,261	0

LEGEND

	EX. CONTOUR		SILT FENCE
	EX. FENCE		BERM
	EX. WOODS LINE		TEMPORARY BRIDGE
	EX. MANHOLE		LIMIT OF DISTURBANCE
	EX. UTILITY POLE		DISCHARGE HOSE
	EX. SANITARY LINE		SANDBAG DAM
	EX. PIPE		FILTER BAG
	ROAD EDGE		PUMP
	BUILDING		PROPOSED CONTOUR
	PROPERTY LINE		PROPOSED CHANNEL
	DITCH EDGE		PROPOSED W-WEIR
	WATERS OF THE U.S.		PROPOSED OUTFALL STABILIZATION
	WATERS OF THE U.S. EPHEMERAL		PROPOSED MANHOLE STORM DRAIN PIPE & ENDWALL
	EX. NON-TIDAL WETLAND		PROPOSED WETLAND CREATION AREA
	25' WETLAND BUFFER		TOE BOULDERS
	EX. 100 YEAR FEMA FLOODPLAIN		WOODY TOE
	STABILIZED CONSTRUCTION ENTERANCE		WOODY DEBRIS PLUG
	CLEAN WATER DIVERSION		RIFFLE GRADE CONTROL
			STEP POOL CREST

LEGEND FOR IMPACT TYPES

	TEMPORARY WATERS OF U.S. IMPACT		PERMANENT WATERS OF U.S. IMPACT
	PFO NON-TIDAL WETLAND CLEARED AND REPLANTED		PFO NON-TIDAL WETLAND GRADED AND REPLACED
	TEMPORARY 25' NON-TIDAL WETLAND BUFFER IMPACT		PERMANENT EPHEMERAL CHANNEL IMPACT

LEGEND

I-95 ETL NORTHBOUND EXTENSION
 CARSENS RUN STREAM MITIGATION
 JOHN F. KENNEDY MEMORIAL HIGHWAY
 HARFORD COUNTY, MARYLAND



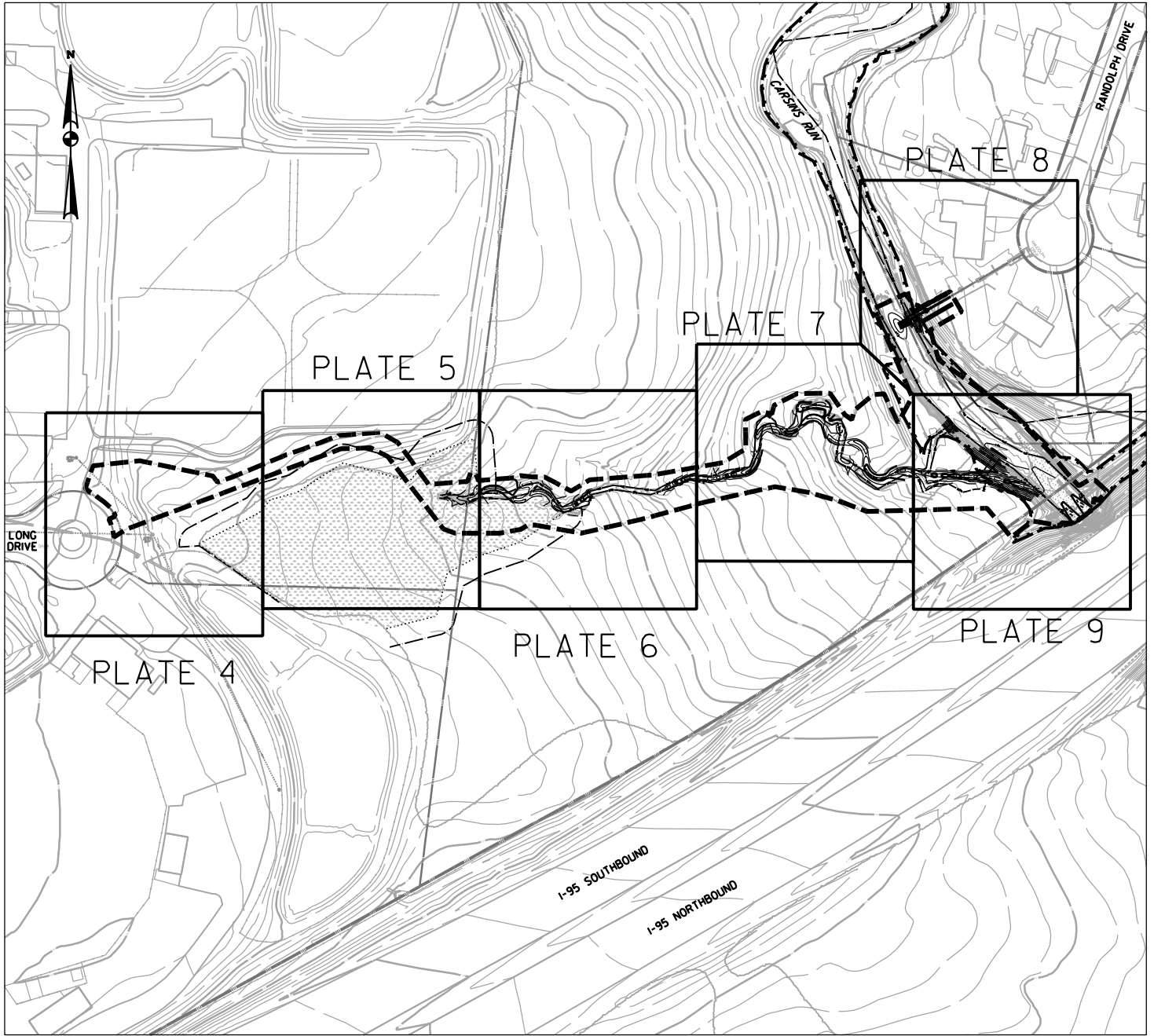
**MARYLAND
 TRANSPORTATION AUTHORITY**

SCALE: N.T.S.

DATE: REV. JAN. 2021

CONTRACT NO.: KH-3028

PLATE 2 OF 9



KEY MAP

I-95 ETL NORTHBOUND EXTENSION
 CARSINS RUN STREAM MITIGATION
 JOHN F. KENNEDY MEMORIAL HIGHWAY
 HARFORD COUNTY, MARYLAND



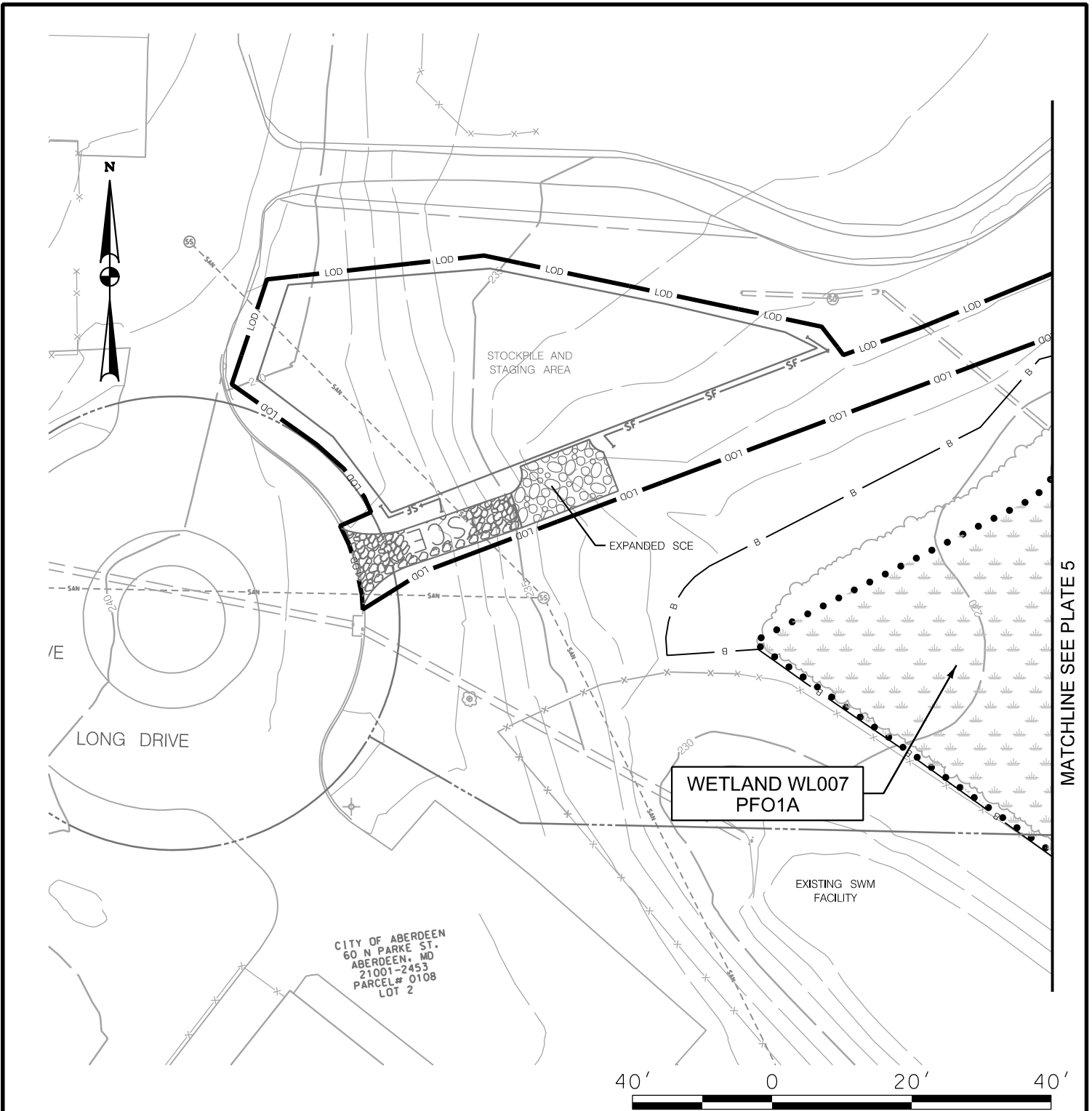
**MARYLAND
 TRANSPORTATION AUTHORITY**

SCALE: 1" = 200'

DATE: REV. JAN. 2021

CONTRACT NO.: KH-3028

PLATE 3 OF 9



IMPACTS ON THIS PLATE

	TEMPORARY	PERMANENT
PFO WETLAND CLEARED & REPLANTED	0 SF	0 SF
PFO WETLAND GRADED & REPLACED	0 SF	0 SF
PSS WETLAND	0 SF	0 SF
PEM WETLAND	0 SF	0 SF
PERENNIAL WUS	0 LF / 0 SF	0 LF / 0 SF
INTERMITTENT WUS	0 LF / 0 SF	0 LF / 0 SF
EPHEMERAL WUS	0 LF / 0 SF	0 LF / 0 SF
WETLAND BUFFER	0 SF	0 SF
100-YEAR FLOODPLAIN	0 SF	0 SF

NOTE: NO IMPACTS ON THIS PLATE

WETLAND IMPACT PLATE

I-95 ETL NORTHBOUND EXTENSION
 CARSENS RUN STREAM MITIGATION
 JOHN F. KENNEDY MEMORIAL HIGHWAY
 HARFORD COUNTY, MARYLAND



**MARYLAND
 TRANSPORTATION AUTHORITY**

SCALE: 1" = 40'

DATE: REV. JAN. 2021

CONTRACT NO.: KH-3028

PLATE 4 OF 9



CITY OF ABERDEEN
60 N PARKE ST.
ABERDEEN, MD
21001-2453
PARCEL# 0108
LOT 3

WUS WL003
R4SB3/4

WETLAND WL007
PFO1A

MATCHLINE SEE PLATE 4

MATCHLINE SEE PLATE 6



SCALE: 1" = 40'

IMPACTS ON THIS PLATE

TEMPORARY

PERMANENT

PFO WETLAND CLEARED & REPLANTED	3,293 SF	0 SF
PFO WETLAND GRADED & REPLACED	1,212 SF	0 SF
PSS WETLAND	0 SF	0 SF
PEM WETLAND	0 SF	0 SF
PERENNIAL WUS	0 LF/ 0 SF	0 LF/ 0 SF
INTERMITTENT WUS	0 LF/ 0 SF	58 LF/ 394 SF
EPHEMERAL WUS	0 LF/ 0 SF	0 LF/ 0 SF
WETLAND BUFFER	988 SF	0 SF
100-YEAR FLOODPLAIN	0 SF	0 SF

WETLAND IMPACT PLATE

I-95 ETL NORTHBOUND EXTENSION
CARSENS RUN STREAM MITIGATION
JOHN F. KENNEDY MEMORIAL HIGHWAY
HARFORD COUNTY, MARYLAND



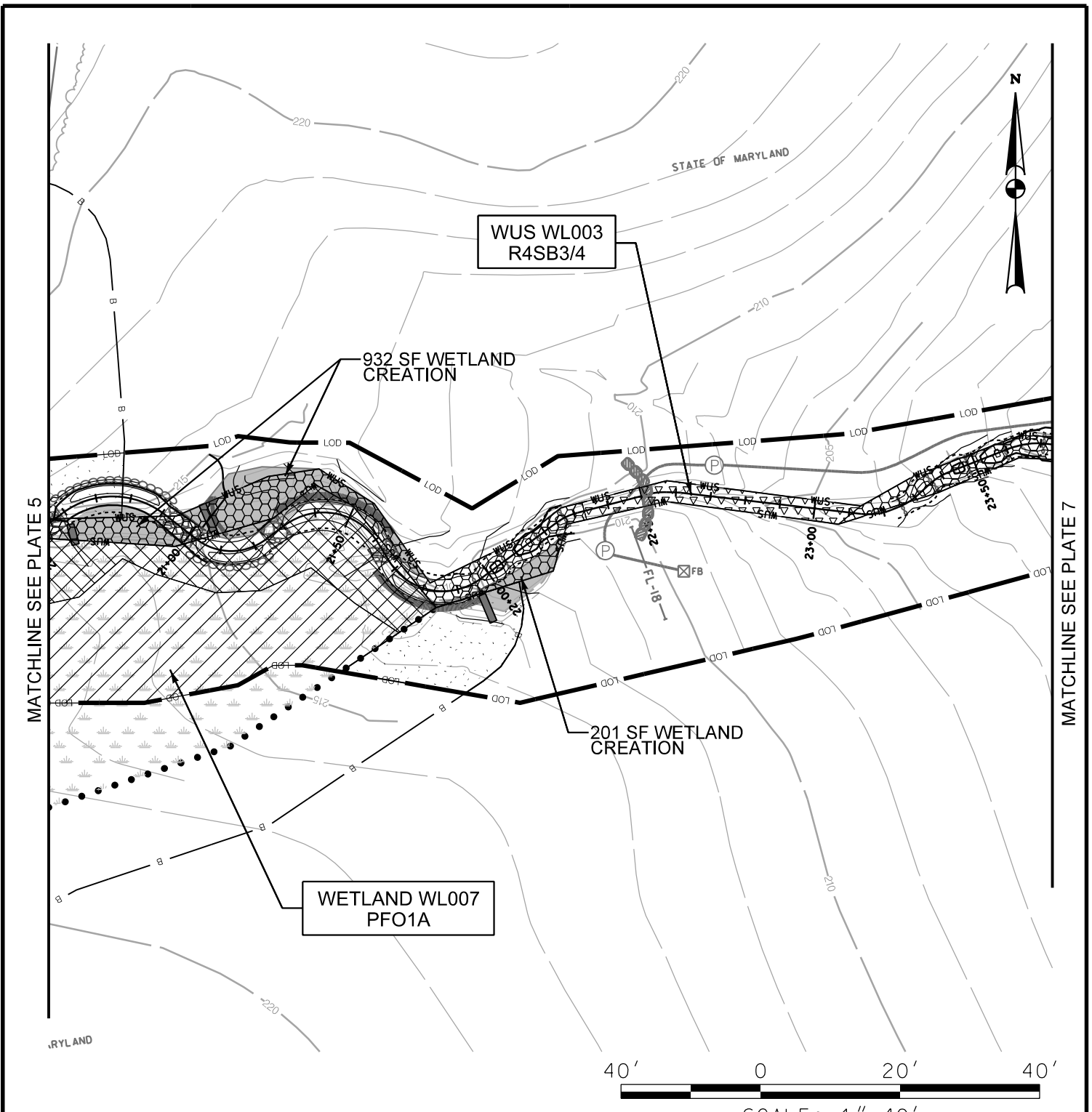
**MARYLAND
TRANSPORTATION AUTHORITY**

SCALE: 1" = 40'

DATE: REV. JAN. 2021

CONTRACT NO.: KH-3028

PLATE 5 OF 9



IMPACTS ON THIS PLATE

TEMPORARY

PERMANENT

PFO WETLAND CLEARED & REPLANTED	2,726 SF	0 SF
PFO WETLAND GRADED & REPLACED	1,807 SF	0 SF
PSS WETLAND	0 SF	0 SF
PEM WETLAND	0 SF	0 SF
PERENNIAL WUS	0 LF / 0 SF	0 LF / 0 SF
INTERMITTENT WUS	73 LF / 448 SF	251 LF / 1,672 SF
EPHEMERAL WUS	0 LF / 0 SF	0 LF / 0 SF
WETLAND BUFFER	1,273 SF	0 SF
100-YEAR FLOODPLAIN	0 SF	0 SF

WETLAND IMPACT PLATE

I-95 ETL NORTHBOUND EXTENSION
 CARNSINS RUN STREAM MITIGATION
 JOHN F. KENNEDY MEMORIAL HIGHWAY
 HARFORD COUNTY, MARYLAND



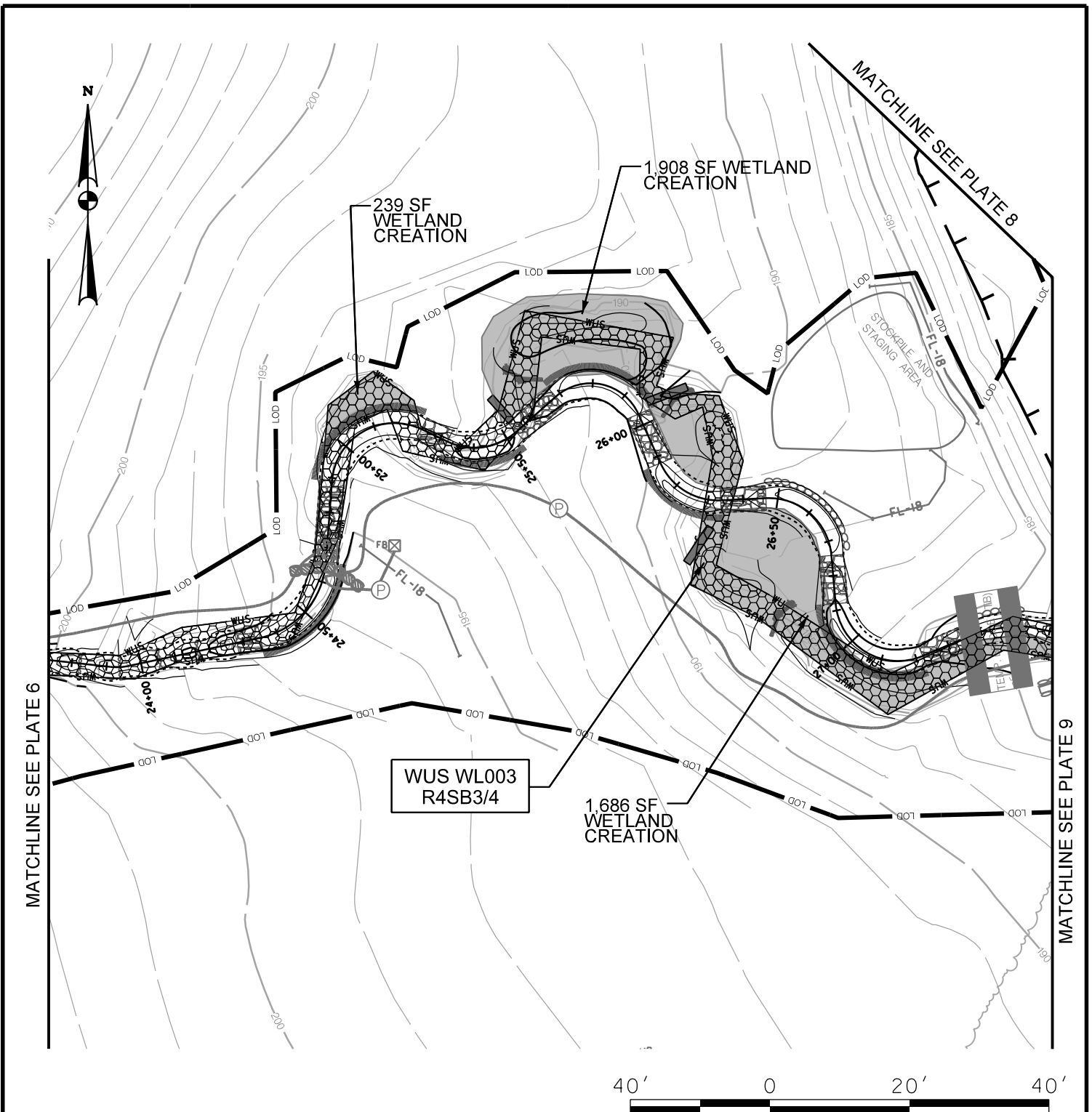
**MARYLAND
 TRANSPORTATION AUTHORITY**

SCALE: 1" = 40'

DATE: REV. JAN. 2021

CONTRACT NO.: KH-3028

PLATE 6 OF 9



IMPACTS ON THIS PLATE

TEMPORARY

PERMANENT

PFO WETLAND CLEARED & REPLANTED	0 SF	0 SF
PFO WETLAND GRADED & REPLACED	0 SF	0 SF
PSS WETLAND	0 SF	0 SF
PEM WETLAND	0 SF	0 SF
PERENNIAL WUS	0 LF/ 0 SF	0 LF/ 0 SF
INTERMITTENT WUS	0 LF/ 0 SF	462 LF/ 3.461 SF
EPHEMERAL WUS	0 LF/ 0 SF	0 LF/ 0 SF
WETLAND BUFFER	0 SF	0 SF
100-YEAR FLOODPLAIN	406 SF	0 SF

WETLAND IMPACT PLATE

I-95 ETL NORTHBOUND EXTENSION
 CARSENS RUN STREAM MITIGATION
 JOHN F. KENNEDY MEMORIAL HIGHWAY
 HARFORD COUNTY, MARYLAND



**MARYLAND
 TRANSPORTATION AUTHORITY**

SCALE: 1" = 40'

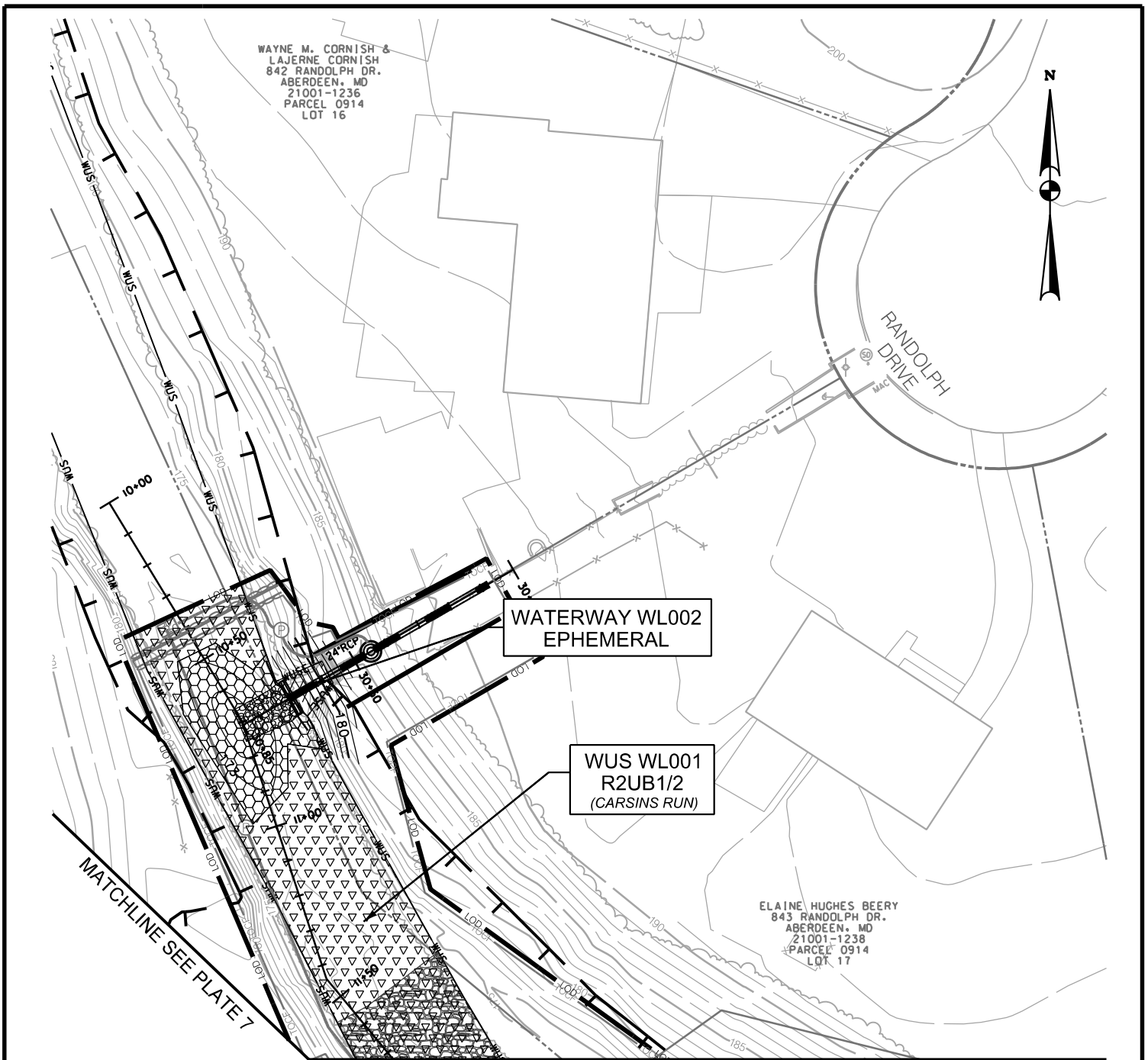
DATE: REV. JAN. 2021

CONTRACT NO.: KH-3028

PLATE 7 OF 9

WAYNE M. CORNISH &
LAJERNE CORNISH
842 RANDOLPH DR.
ABERDEEN, MD
21001-1236
PARCEL 0914
LOT 16

ELAINE HUGHES BEERY
843 RANDOLPH DR.
ABERDEEN, MD
21001-1238
PARCEL 0914
LOT 17



MATCHLINE SEE PLATE 9



SCALE: 1"=40'

IMPACTS ON THIS PLATE

	TEMPORARY	PERMANENT
PFO WETLAND CLEARED & REPLANTED	0 SF	0 SF
PFO WETLAND GRADED & REPLACED	0 SF	0 SF
PSS WETLAND	0 SF	0 SF
PEM WETLAND	0 SF	0 SF
PERENNIAL WUS	81 LF/ 3,478 SF	50 LF/ 1,035 SF
INTERMITTENT WUS	0 LF/ 0 SF	0 LF/ 0 SF
EPHEMERAL WUS	0 LF/ 0 SF	14 LF/ 118 SF
WETLAND BUFFER	0 SF	0 SF
100-YEAR FLOODPLAIN	3,293 SF	0 SF

WETLAND IMPACT PLATE

I-95 ETL NORTHBOUND EXTENSION
CARSINS RUN STREAM MITIGATION
JOHN F. KENNEDY MEMORIAL HIGHWAY
HARFORD COUNTY, MARYLAND



**MARYLAND
TRANSPORTATION AUTHORITY**

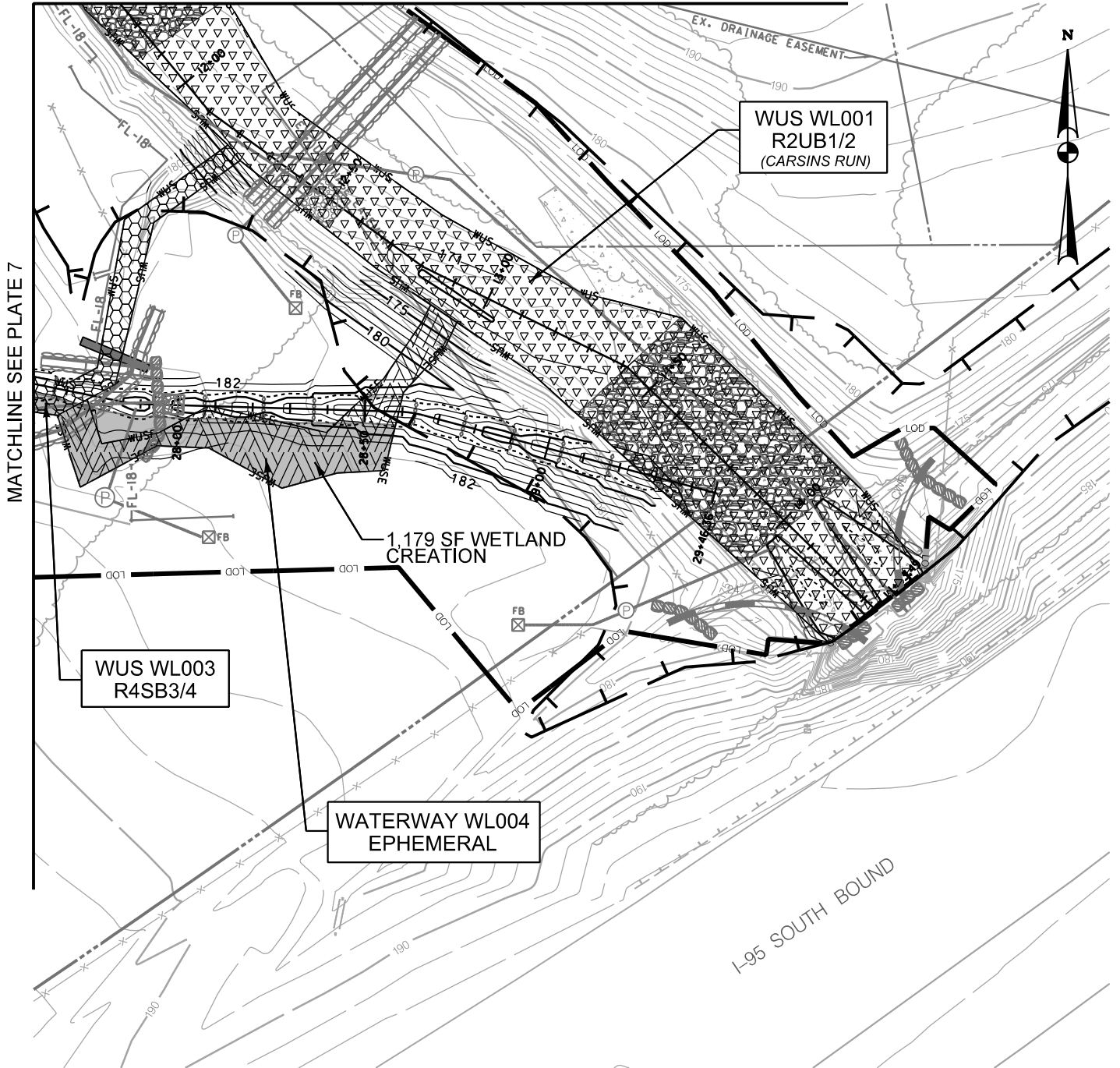
SCALE: 1" = 40'

DATE: REV. JAN. 2021

CONTRACT NO.: KH-3028

PLATE 8 OF 9

MATCHLINE SEE PLATE 8



IMPACTS ON THIS PLATE

	TEMPORARY	PERMANENT
PFO WETLAND CLEARED & REPLANTED	0 SF	0 SF
PFO WETLAND GRADED & REPLACED	0 SF	0 SF
PSS WETLAND	0 SF	0 SF
PEM WETLAND	0 SF	0 SF
PERENNIAL WUS	235 LF/ 7,093 SF	28 LF/ 79 SF
INTERMITTENT WUS	0 LF/ 0 SF	97 LF/ 604 SF
EPHEMERAL WUS	0 LF/ 0 SF	153 LF/ 1,342 SF
WETLAND BUFFER	0 SF	0 SF
100-YEAR FLOODPLAIN	12,075 SF	0 SF

WETLAND IMPACT PLATE

I-95 ETL NORTHBOUND EXTENSION
 CARSINS RUN STREAM MITIGATION
 JOHN F. KENNEDY MEMORIAL HIGHWAY
 HARFORD COUNTY, MARYLAND



**MARYLAND
 TRANSPORTATION AUTHORITY**

SCALE: 1" = 40'

DATE: REV. JAN. 2021

CONTRACT NO.: KH-3028

PLATE 9 OF 9