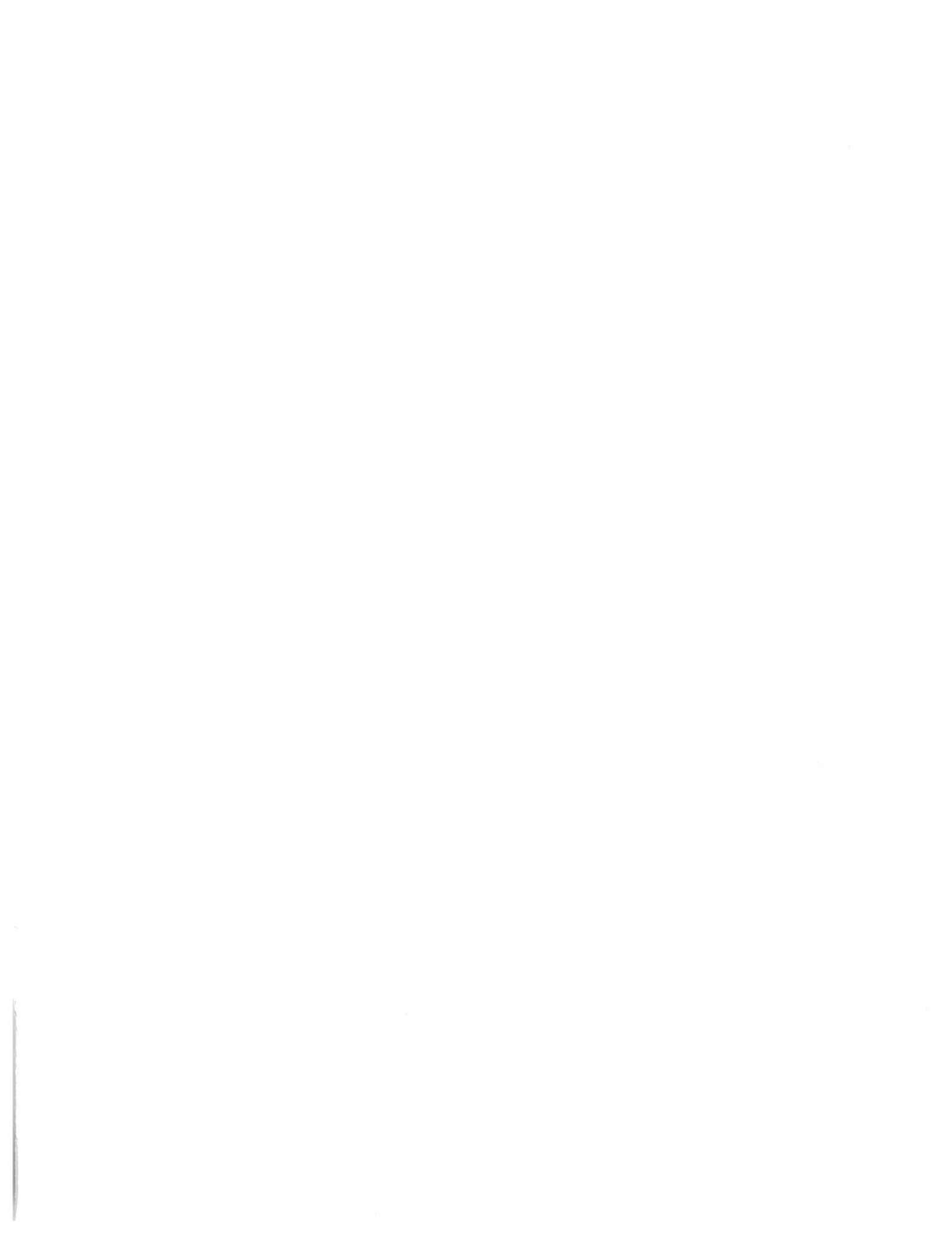


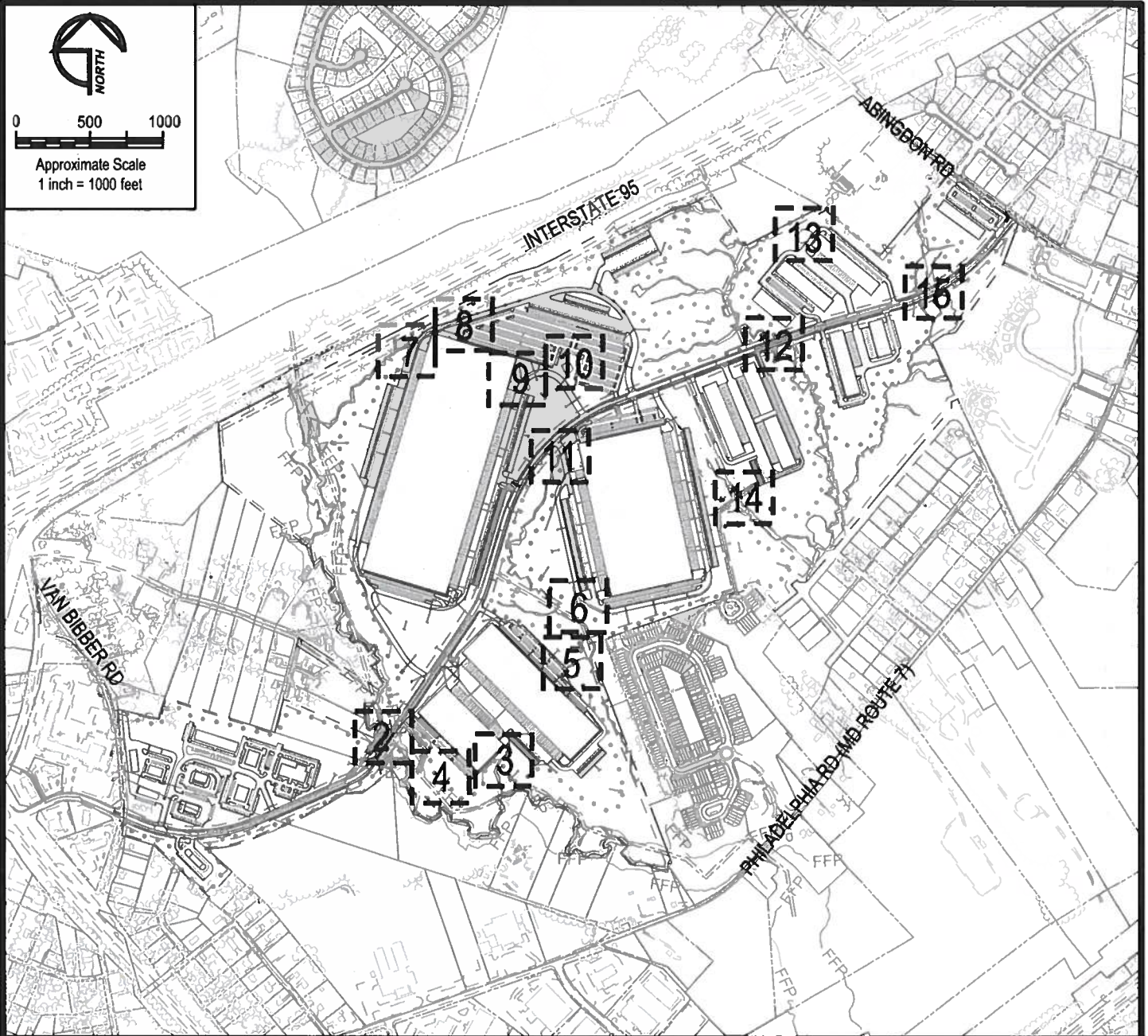
# **Wetland/Waterway Impact Plates**





0 500 1000

Approximate Scale  
1 inch = 1000 feet



**GEO-TECHNOLOGY ASSOCIATES, INC.**

**GEOTECHNICAL AND ENVIRONMENTAL CONSULTANTS**

3445-A BOX HILL CORPORATE CENTER DRIVE  
ABINGDON, MARYLAND 21009  
410-515-9446  
FAX: 410-515-4895  
WWW.GTAENG.COM

© GEO-TECHNOLOGY ASSOCIATES, INC.

**WETLAND/WATERWAY IMPACT PLATES  
ABINGDON BUSINESS PARK**

HARFORD COUNTY, MARYLAND

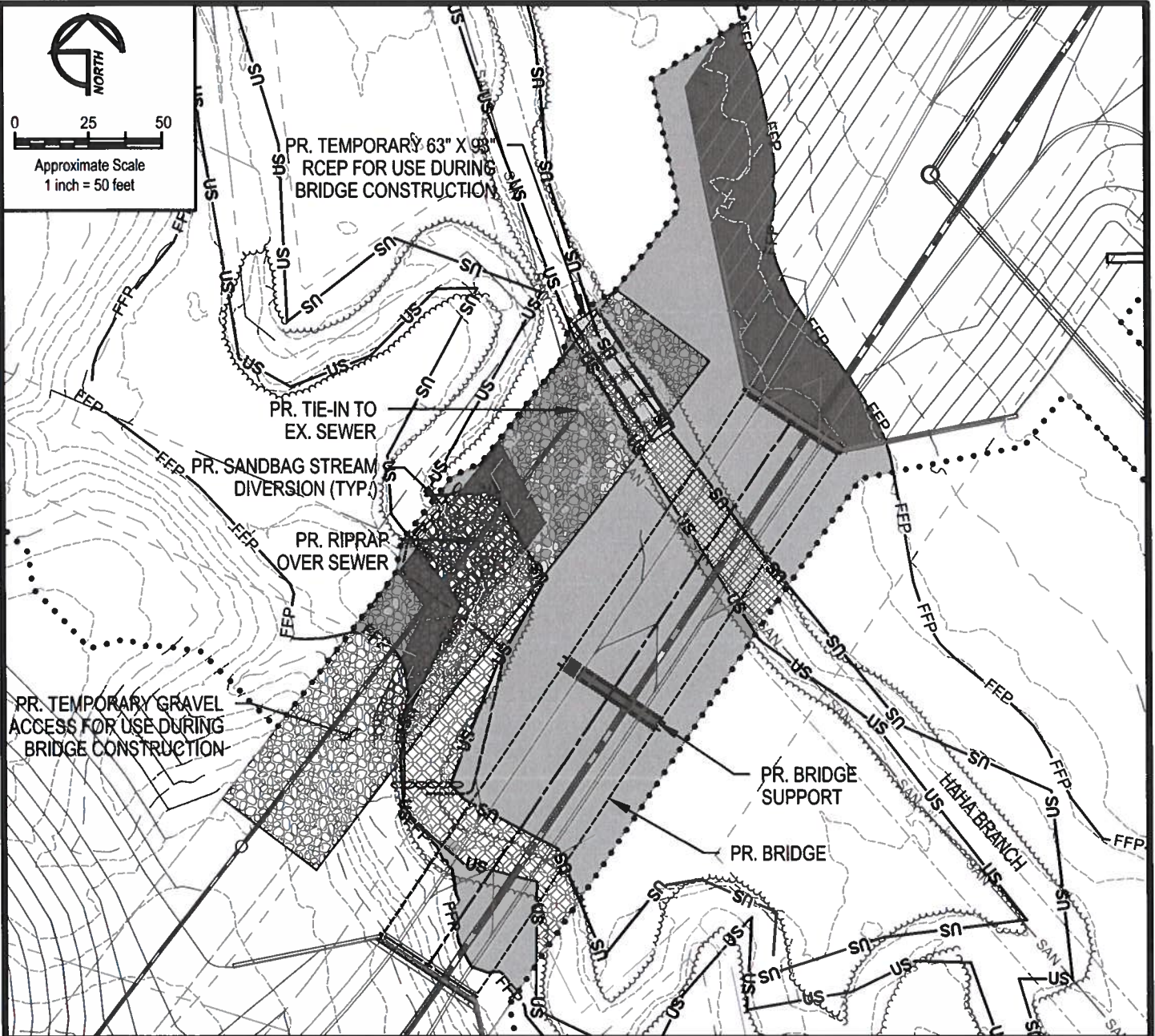
JOB NO. 31171877x1 SCALE: 1"=1,000' DATE: JULY 2, 2019 DRAWN BY: MAJ REVIEW BY: TAS FIGURE: 1 OF 16





0 25 50

Approximate Scale  
1 inch = 50 feet



**LEGEND**

- ..... PR. LIMIT OF DISTURBANCE
- PR. 2' CONTOURS
- PR. 10' CONTOURS
- PR. EDGE OF PAVEMENT
- FFP EX. 100-YEAR FLOODPLAIN
- US EX. STREAM CHANNEL
- ▾ NW EX. NONTIDAL WETLAND
- ▾ NW EX. 25' WETLAND BUFFER

**PROPOSED IMPACTS**

- TEMPORARY PERENNIAL STREAM IMPACTS  
1,573 SF (0.04 AC), 120 LF
- PERMANENT INTERMITTENT STREAM IMPACTS  
997 SF (0.02 AC), 30 LF
- TEMPORARY INTERMITTENT STREAM IMPACTS  
2,675 SF (0.06 AC), 153 LF
- PERMANENT 100-YR FLOODPLAIN IMPACTS  
4,618 SF (0.11 AC)
- TEMPORARY 100-YR FLOODPLAIN IMPACTS  
15,908 SF (0.37 AC)



**GEO-TECHNOLOGY ASSOCIATES, INC.**

GEOTECHNICAL AND ENVIRONMENTAL CONSULTANTS

3445-A BOX HILL CORPORATE CENTER DRIVE  
ABINGDON, MARYLAND 21009  
410-515-9446  
FAX: 410-515-4895  
WWW.GTAENG.COM

© GEO-TECHNOLOGY ASSOCIATES, INC.

**WETLAND/WATERWAY IMPACT PLATES  
ABINGDON BUSINESS PARK**

HARFORD COUNTY, MARYLAND

JOB NO. 31171877x1 SCALE: 1"=50' DATE: JULY 2, 2019 DRAWN BY: MAJ REVIEW BY: TAS FIGURE: 2 OF 16



0 25 50

Approximate Scale  
1 inch = 50 feet

PR. BUILDING

PR. SWM

PR. RETAINING  
WALL

**LEGEND**

- ..... PR. LIMIT OF DISTURBANCE
- PR. 2' CONTOURS
- PR. 10' CONTOURS
- PR. EDGE OF PAVEMENT
- FFP —— EX. 100-YEAR FLOODPLAIN
- US —— EX. STREAM CHANNEL
- ▾ ▾ NW ▾ ▾ EX. NONTIDAL WETLAND
- WB —— EX. 25' WETLAND BUFFER

**PROPOSED IMPACTS**

-  PERMANENT EPHEMERAL CHANNEL IMPACTS  
603 SF (0.01 AC), 171 LF



**GEO-TECHNOLOGY ASSOCIATES, INC.**

GEO TECHNICAL AND ENVIRONMENTAL CONSULTANTS

3445-A BOX HILL CORPORATE CENTER DRIVE  
ABINGDON, MARYLAND 21009  
410-515-9446  
FAX: 410-515-4895  
WWW.GTAENG.COM

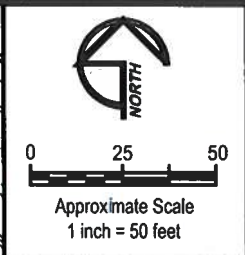
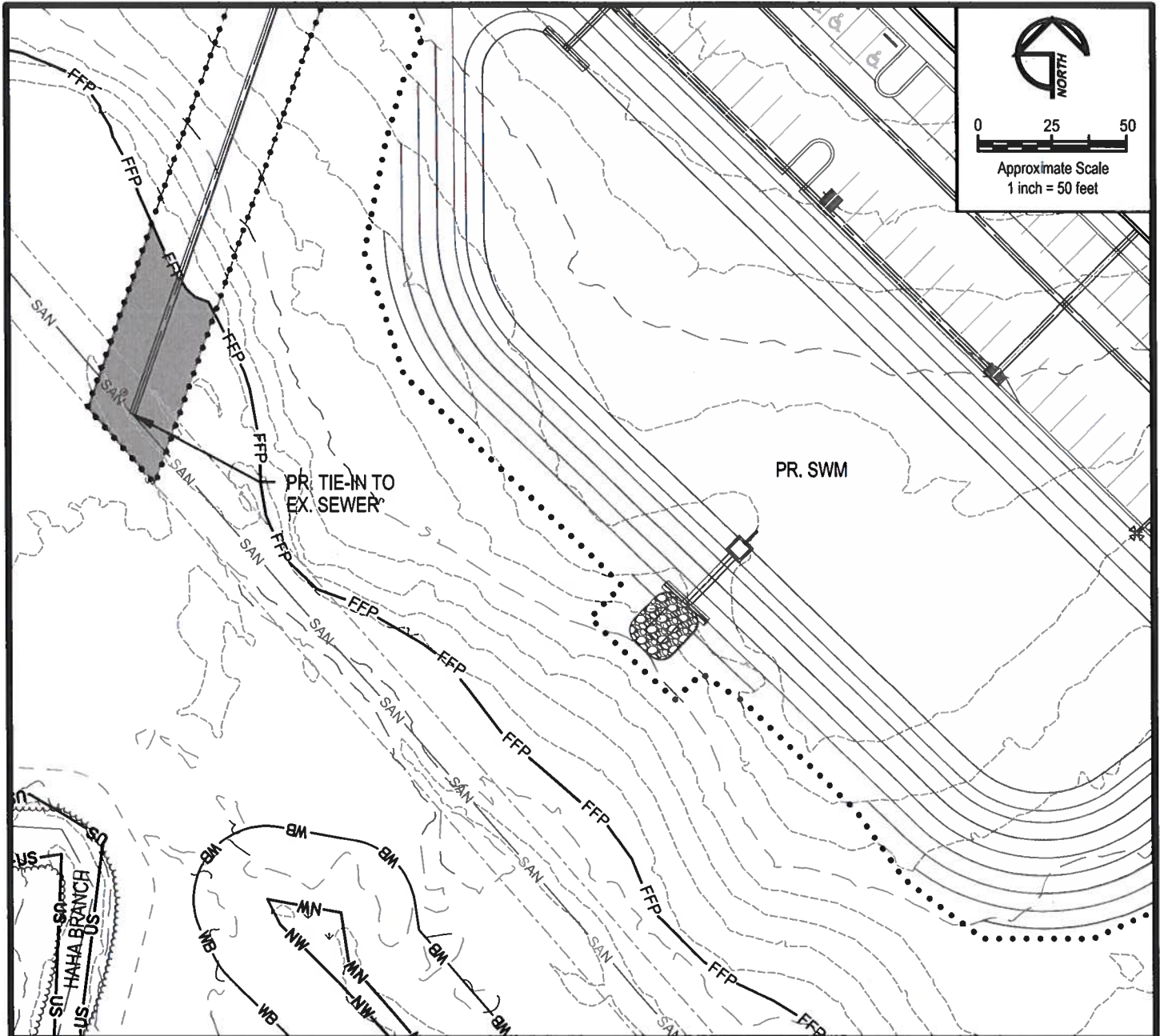
© GEO-TECHNOLOGY ASSOCIATES, INC.

**WETLAND/WATERWAY IMPACT PLATES  
ABINGDON BUSINESS PARK**

HARFORD COUNTY, MARYLAND

|                    |               |                    |               |                |                 |
|--------------------|---------------|--------------------|---------------|----------------|-----------------|
| JOB NO. 31171877x1 | SCALE: 1"=50' | DATE: JULY 2, 2019 | DRAWN BY: MAJ | REVIEW BY: TAS | FIGURE: 3 OF 16 |
|--------------------|---------------|--------------------|---------------|----------------|-----------------|





**LEGEND**

- ..... PR. LIMIT OF DISTURBANCE
- PR. 2' CONTOURS
- PR. 10' CONTOURS
- PR. EDGE OF PAVEMENT
- FFP --- 100-YEAR FLOODPLAIN
- US --- EX. STREAM CHANNEL
- NW --- EX. NONTIDAL WETLAND
- WB --- EX. 25' WETLAND BUFFER

**PROPOSED IMPACTS**

- TEMPORARY 100-YR FLOODPLAIN IMPACTS  
1,856 SF (0.04 AC)



**GEO-TECHNOLOGY ASSOCIATES, INC.**  
 GEOTECHNICAL AND ENVIRONMENTAL CONSULTANTS  
 3445-A BOX HILL CORPORATE CENTER DRIVE  
 ABINGDON, MARYLAND 21009  
 410-515-9446  
 FAX: 410-515-4895  
 WWW.GTAENG.COM  
 © GEO-TECHNOLOGY ASSOCIATES, INC.

**WETLAND/WATERWAY IMPACT PLATES**  
**ABINGDON BUSINESS PARK**  
 HARFORD COUNTY, MARYLAND

|                    |               |                    |               |                |                 |
|--------------------|---------------|--------------------|---------------|----------------|-----------------|
| JOB NO. 31171877x1 | SCALE: 1"=50' | DATE: JULY 2, 2019 | DRAWN BY: MAJ | REVIEW BY: TAS | FIGURE: 4 OF 16 |
|--------------------|---------------|--------------------|---------------|----------------|-----------------|



0 25 50

Approximate Scale  
1 inch = 50 feet

PR. SWM

PR. BUILDING

### LEGEND

- ..... PR. LIMIT OF DISTURBANCE
- PR. 2' CONTOURS
- PR. 10' CONTOURS
- PR. EDGE OF PAVEMENT
- FFP ——— 100-YEAR FLOODPLAIN
- US ——— EX. STREAM CHANNEL
- ⏏ NW ⏏ EX. NONTIDAL WETLAND
- ⏏ NW ⏏
- WB ——— EX. 25' WETLAND BUFFER

### PROPOSED IMPACTS

- PERMANENT EPHEMERAL CHANNEL IMPACTS  
155 SF (0.004 AC), 46 LF



## GEO-TECHNOLOGY ASSOCIATES, INC.

GEO-TECHNICAL AND ENVIRONMENTAL CONSULTANTS

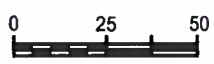
3445-A BOX HILL CORPORATE CENTER DRIVE  
ABINGDON, MARYLAND 21009  
410-515-9446  
FAX: 410-515-4895  
WWW.GTAENG.COM

© GEO-TECHNOLOGY ASSOCIATES, INC.

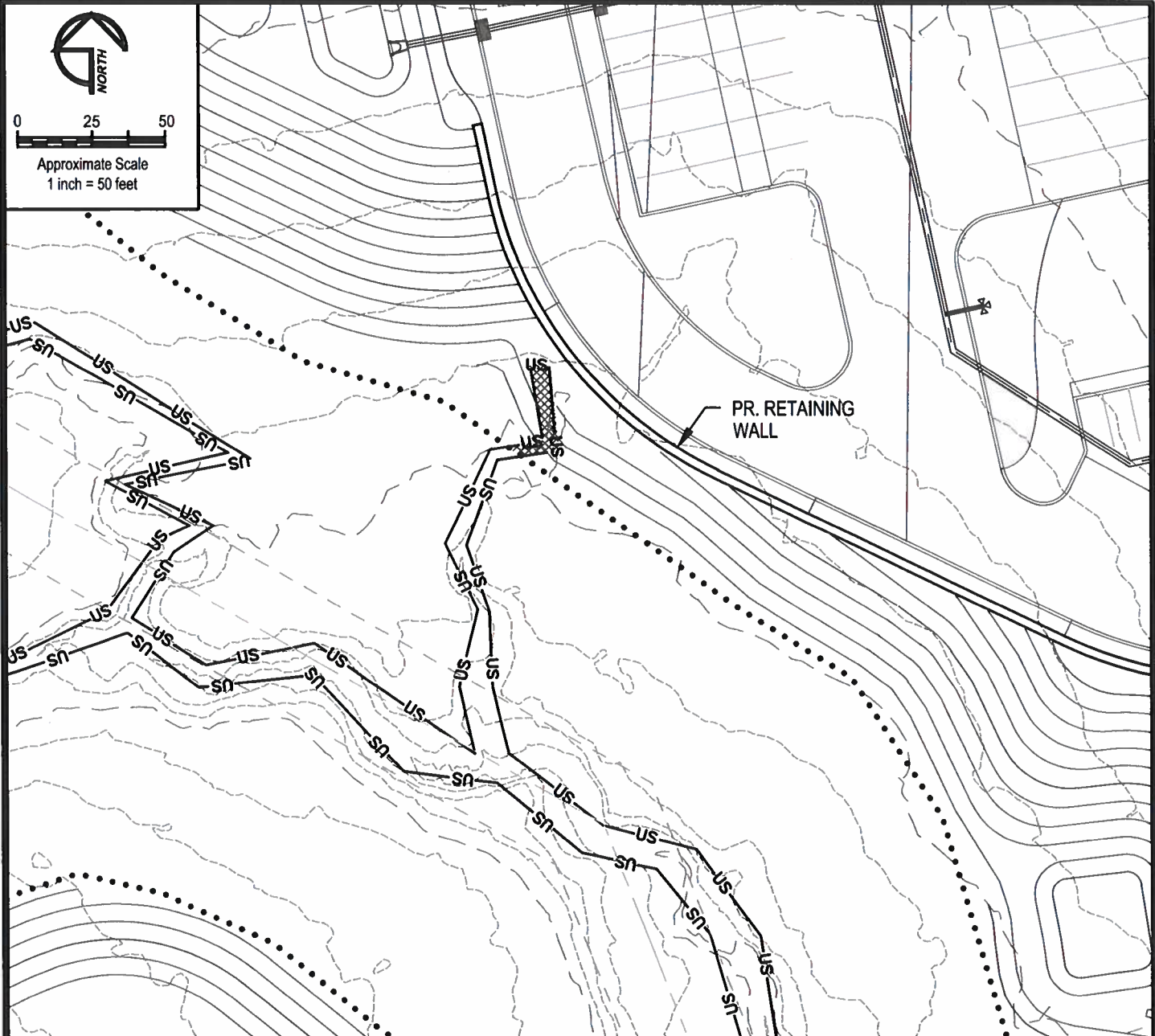
## WETLAND/WATERWAY IMPACT PLATES ABINGDON BUSINESS PARK

HARFORD COUNTY, MARYLAND

|         |            |        |        |       |              |           |     |            |     |         |         |
|---------|------------|--------|--------|-------|--------------|-----------|-----|------------|-----|---------|---------|
| JOB NO. | 31171877x1 | SCALE: | 1"=50' | DATE: | JULY 2, 2019 | DRAWN BY: | MAJ | REVIEW BY: | TAS | FIGURE: | 5 OF 16 |
|---------|------------|--------|--------|-------|--------------|-----------|-----|------------|-----|---------|---------|



Approximate Scale  
1 inch = 50 feet



**LEGEND**

- ..... PR. LIMIT OF DISTURBANCE
- PR. 2' CONTOURS
- PR. 10' CONTOURS
- PR. EDGE OF PAVEMENT
- FFP ——— 100-YEAR FLOODPLAIN
- US ——— EX. STREAM CHANNEL
- NW ——— EX. NONTIDAL WETLAND
- WB ——— EX. 25' WETLAND BUFFER

**PROPOSED IMPACTS**

- PERMANENT EPHEMERAL CHANNEL IMPACTS  
204 SF (0.005 AC), 40 LF



**GEO-TECHNOLOGY ASSOCIATES, INC.**  
 GEOTECHNICAL AND ENVIRONMENTAL CONSULTANTS  
 3445-A BOX HILL CORPORATE CENTER DRIVE  
 ABINGDON, MARYLAND 21009  
 410-515-9446  
 FAX: 410-515-4895  
 WWW.GTAENG.COM

© GEO-TECHNOLOGY ASSOCIATES, INC.

**WETLAND/WATERWAY IMPACT PLATES**  
**ABINGDON BUSINESS PARK**

HARFORD COUNTY, MARYLAND

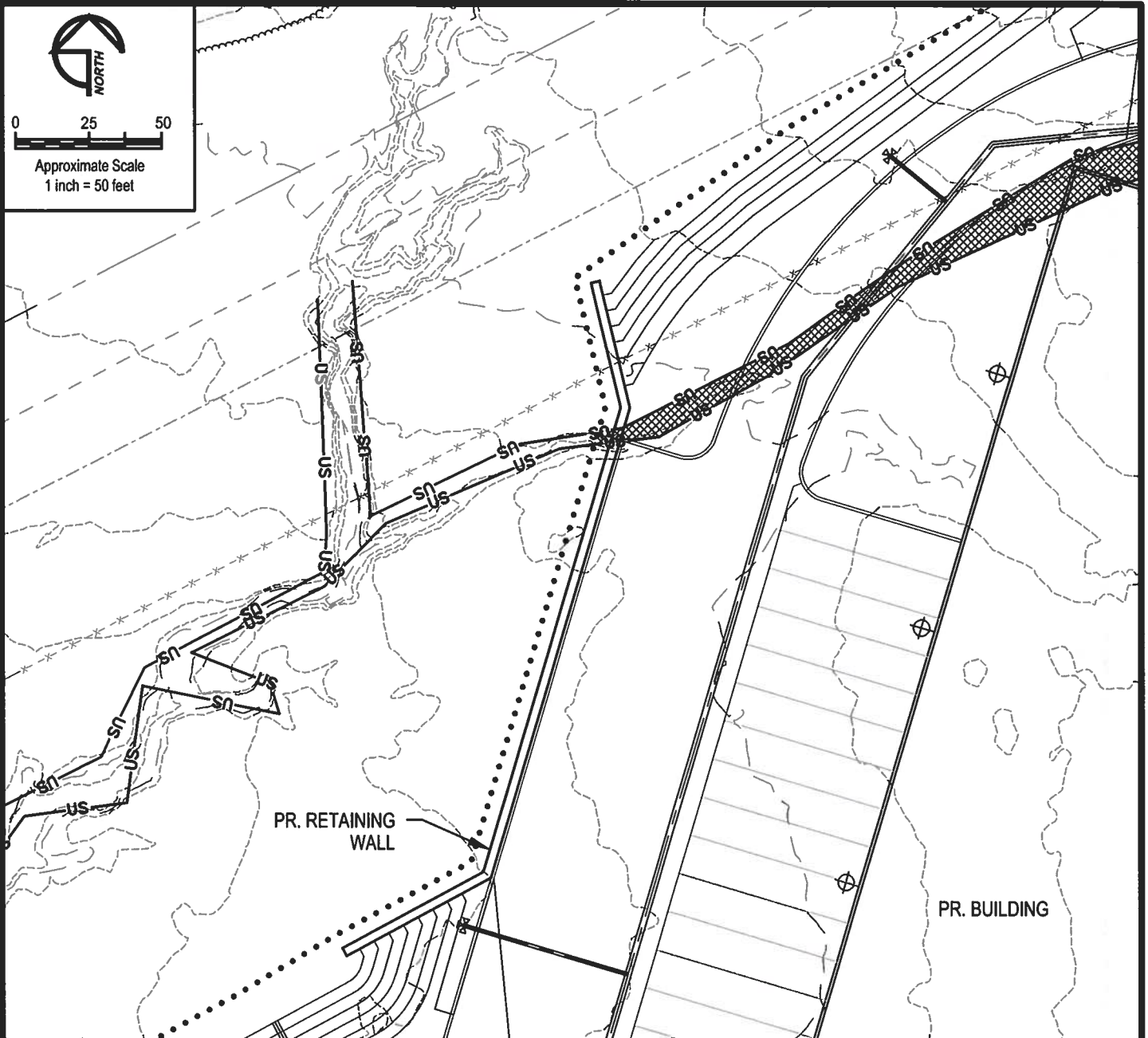
|         |            |        |        |       |              |           |     |            |     |         |         |
|---------|------------|--------|--------|-------|--------------|-----------|-----|------------|-----|---------|---------|
| JOB NO. | 31171877x1 | SCALE: | 1"=50' | DATE: | JULY 2, 2019 | DRAWN BY: | MAJ | REVIEW BY: | TAS | FIGURE: | 6 OF 16 |
|---------|------------|--------|--------|-------|--------------|-----------|-----|------------|-----|---------|---------|





0 25 50

Approximate Scale  
1 inch = 50 feet



### LEGEND

- ..... PR. LIMIT OF DISTURBANCE
- PR. 2' CONTOURS
- PR. 10' CONTOURS
- PR. EDGE OF PAVEMENT
- FFP —— EX. 100-YEAR FLOODPLAIN
- US —— EX. STREAM CHANNEL
- ▼ ▼ NW ▼ ▼ EX. NONTIDAL WETLAND
- WB —— EX. 25' WETLAND BUFFER

### PROPOSED IMPACTS

- PERMANENT EPHEMERAL CHANNEL IMPACTS  
1,752 SF (0.04 AC), 209 LF



### GEO-TECHNOLOGY ASSOCIATES, INC.

GEO-TECHNICAL AND ENVIRONMENTAL CONSULTANTS

3445-A BOX HILL CORPORATE CENTER DRIVE  
ABINGDON, MARYLAND 21009

410-515-9446  
FAX: 410-515-4895  
WWW.GTAENG.COM

© GEO-TECHNOLOGY ASSOCIATES, INC.

## WETLAND/WATERWAY IMPACT PLATES ABINGDON BUSINESS PARK

HARFORD COUNTY, MARYLAND

JOB NO. 31171877x1

SCALE:

1"=50'

DATE:

JULY 2, 2019

DRAWN BY:

MAJ

REVIEW BY:

TAS

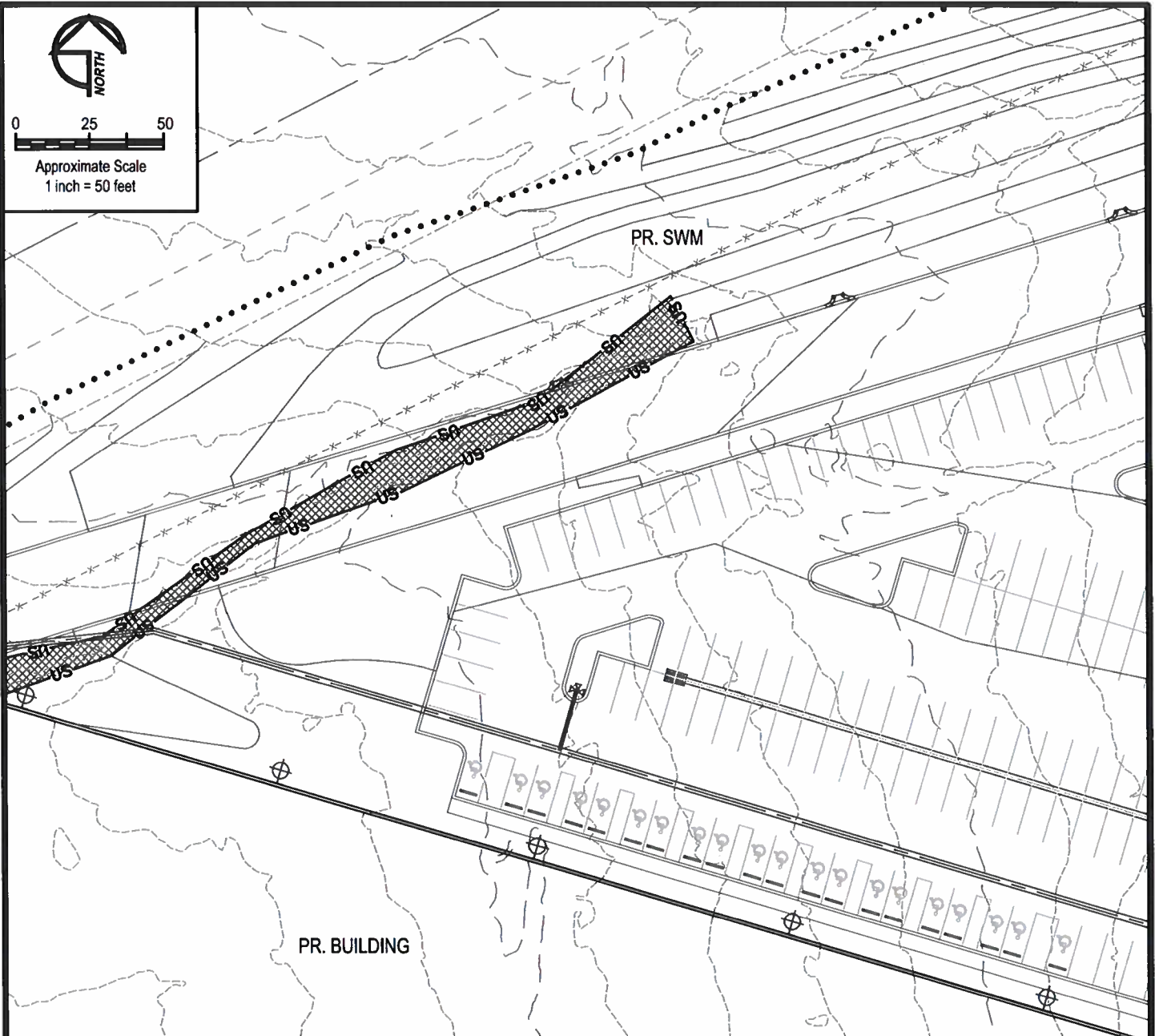
FIGURE:

7 OF 16



0 25 50


Approximate Scale  
1 inch = 50 feet



**LEGEND**

- ..... PR. LIMIT OF DISTURBANCE
- PR. 2' CONTOURS
- PR. 10' CONTOURS
- PR. EDGE OF PAVEMENT
- FFP EX. 100-YEAR FLOODPLAIN
- US EX. STREAM CHANNEL
- NW EX. NONTIDAL WETLAND
- NW
- WB EX. 25' WETLAND BUFFER

**PROPOSED IMPACTS**

-  PERMANENT EPHEMERAL CHANNEL IMPACTS  
2,439 SF (0.06 AC), 262 LF



**GEO-TECHNOLOGY ASSOCIATES, INC.**

GEOTECHNICAL AND ENVIRONMENTAL CONSULTANTS

3445-A BOX HILL CORPORATE CENTER DRIVE  
ABINGDON, MARYLAND 21009  
410-515-9446  
FAX: 410-515-4895  
WWW.GTAENG.COM

© GEO-TECHNOLOGY ASSOCIATES, INC.

**WETLAND/WATERWAY IMPACT PLATES  
ABINGDON BUSINESS PARK**

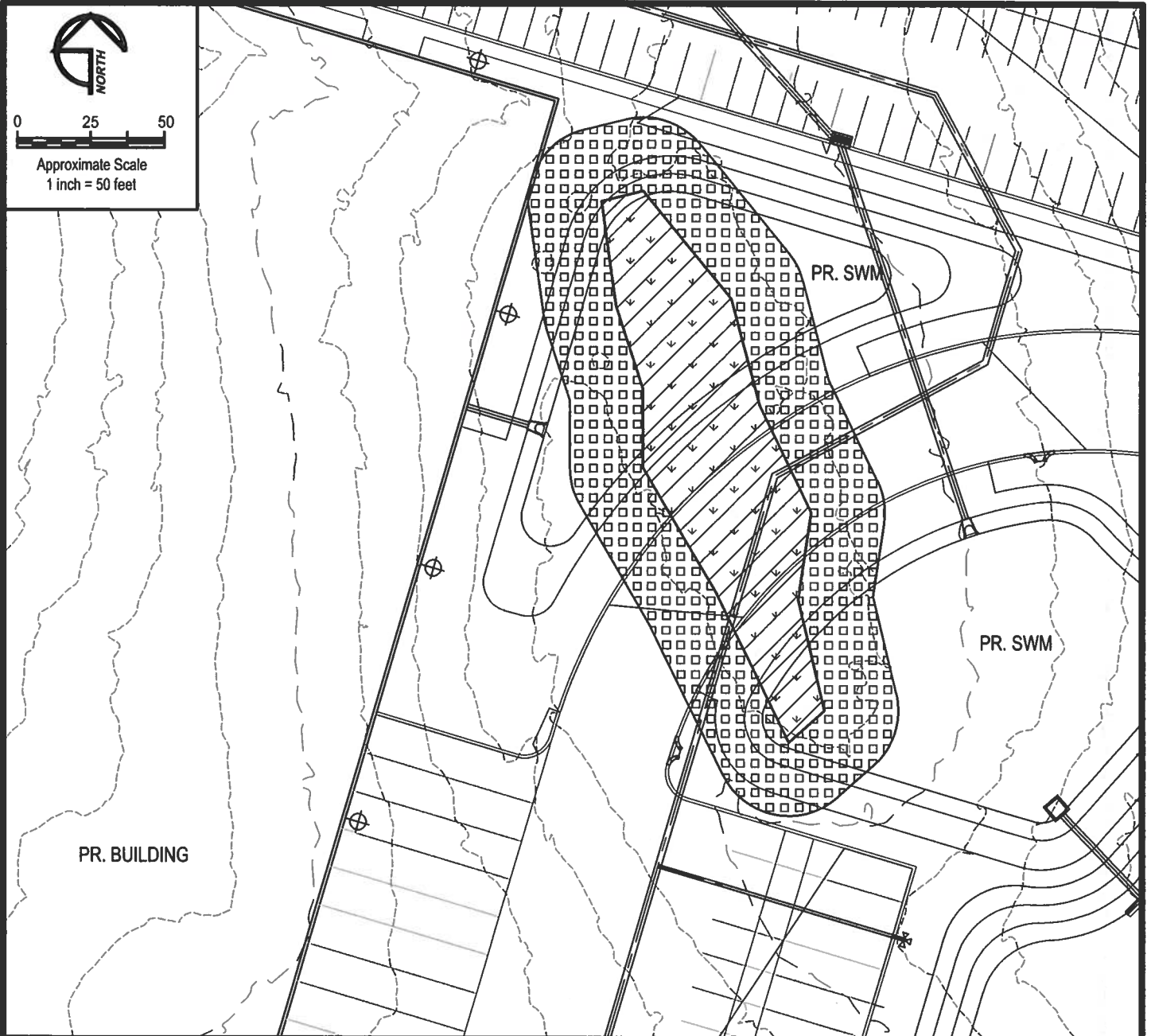
HARFORD COUNTY, MARYLAND

JOB NO. 31171877x1 SCALE: 1"=50' DATE: JULY 2, 2019 DRAWN BY: MAJ REVIEW BY: TAS FIGURE: 8 OF 16



0 25 50

Approximate Scale  
1 inch = 50 feet



**LEGEND**

- ..... PR. LIMIT OF DISTURBANCE
- PR. 2' CONTOURS
- PR. 10' CONTOURS
- PR. EDGE OF PAVEMENT
- FFP —— EX. 100-YEAR FLOODPLAIN
- US —— EX. STREAM CHANNEL
- NW    EX. NONTIDAL WETLAND
- NW
- WB —— EX. 25' WETLAND BUFFER

**PROPOSED IMPACTS**

- PERMANENT ISOLATED PFO WETLAND IMPACTS  
6,203 SF (0.14 AC)
- PERMANENT 25' WETLAND BUFFER IMPACTS  
12,530 SF (0.29 AC)



**GEO-TECHNOLOGY ASSOCIATES, INC.**

GEOTECHNICAL AND ENVIRONMENTAL CONSULTANTS

3445-A BOX HILL CORPORATE CENTER DRIVE  
ABINGDON, MARYLAND 21009  
410-515-9446  
FAX: 410-515-4895  
WWW.GTAENG.COM

© GEO-TECHNOLOGY ASSOCIATES, INC.

**WETLAND/WATERWAY IMPACT PLATES  
ABINGDON BUSINESS PARK**

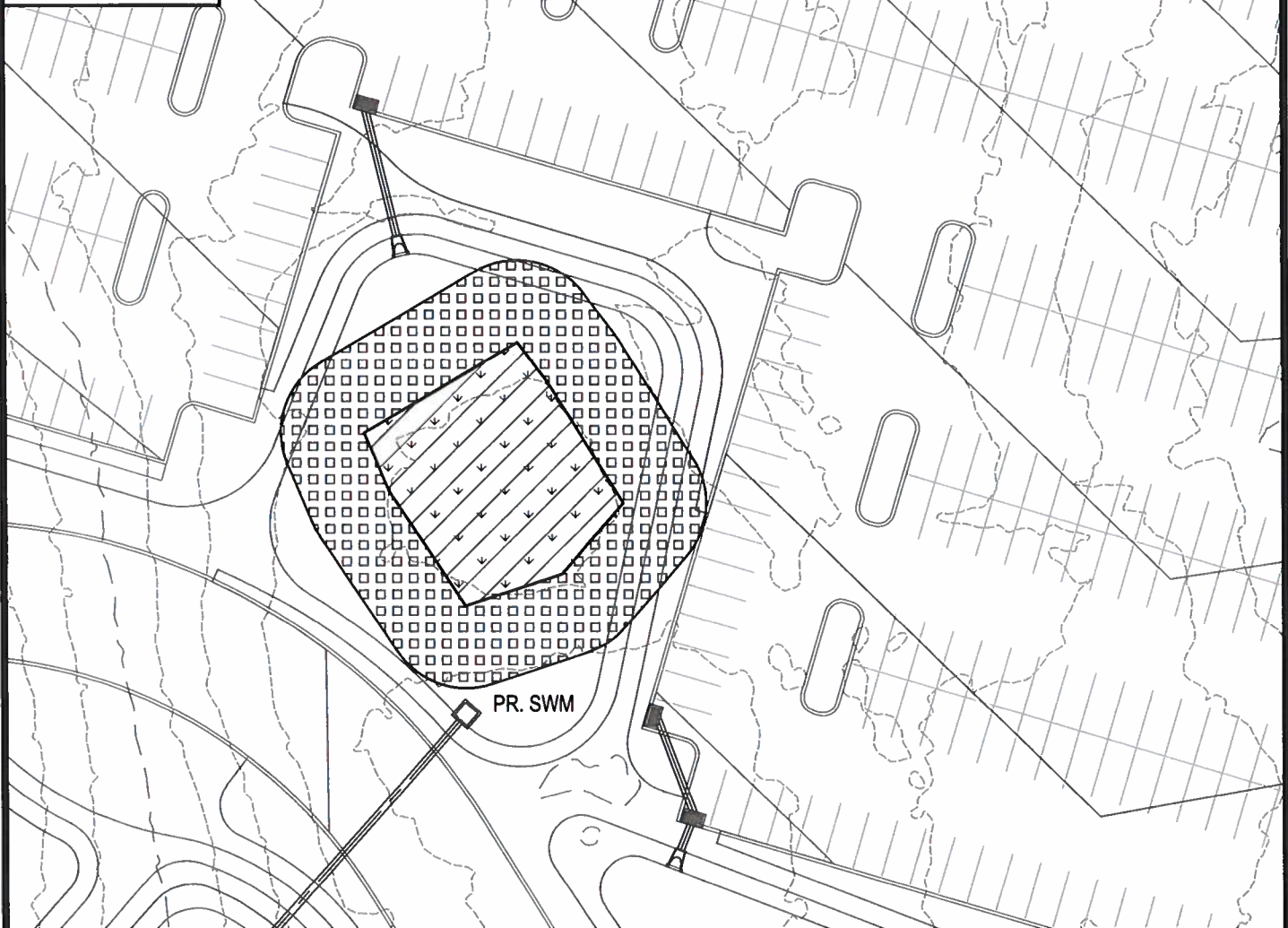
HARFORD COUNTY, MARYLAND

JOB NO. 31171877x1 SCALE: 1"=50' DATE: JULY 2, 2019 DRAWN BY: MAJ REVIEW BY: TAS FIGURE: 9 OF 16





Approximate Scale  
1 inch = 50 feet



**LEGEND**

- ..... PR. LIMIT OF DISTURBANCE
- PR. 2' CONTOURS
- PR. 10' CONTOURS
- PR. EDGE OF PAVEMENT
- FFP EX. 100-YEAR FLOODPLAIN
- US EX. STREAM CHANNEL
- NW EX. NONTIDAL WETLAND
- WB EX. 25' WETLAND BUFFER

**PROPOSED IMPACTS**

- PERMANENT ISOLATED PFO WETLAND IMPACTS  
3,632 SF (0.08 AC)
- PERMANENT 25' WETLAND BUFFER IMPACTS  
7,775 SF (0.18 AC)



**GEO-TECHNOLOGY ASSOCIATES, INC.**

GEOTECHNICAL AND ENVIRONMENTAL CONSULTANTS

3445-A BOX HILL CORPORATE CENTER DRIVE  
ABINGDON, MARYLAND 21009  
410-515-9446  
FAX: 410-515-4895  
WWW.GTAENG.COM

© GEO-TECHNOLOGY ASSOCIATES, INC.

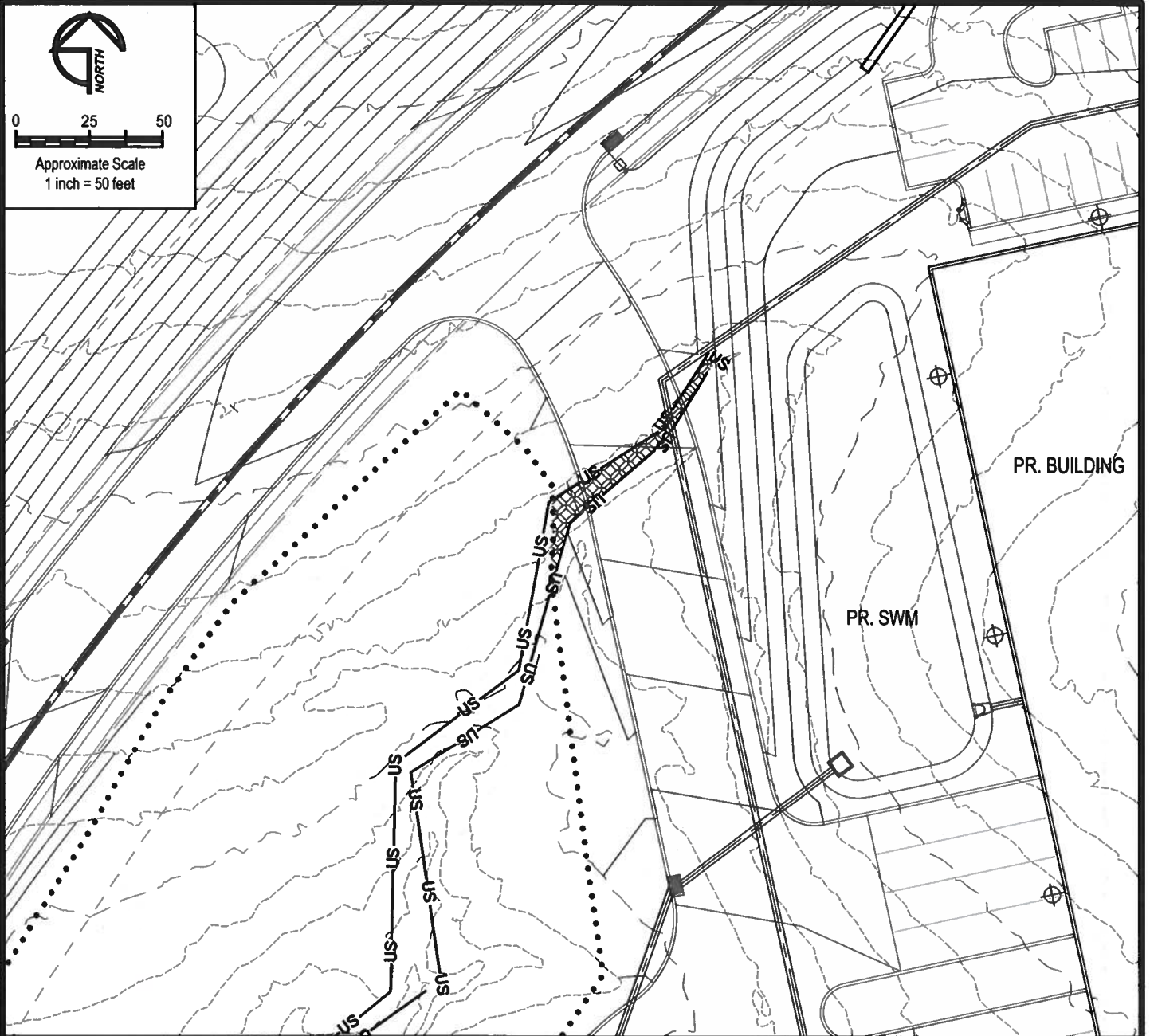
**WETLAND/WATERWAY IMPACT PLATES  
ABINGDON BUSINESS PARK**

HARFORD COUNTY, MARYLAND



0 25 50

Approximate Scale  
1 inch = 50 feet



**LEGEND**

- ..... PR. LIMIT OF DISTURBANCE
- PR. 2' CONTOURS
- PR. 10' CONTOURS
- PR. EDGE OF PAVEMENT
- FFP EX. 100-YEAR FLOODPLAIN
- US EX. STREAM CHANNEL
- NW EX. NONTIDAL WETLAND
- WB EX. 25' WETLAND BUFFER

**PROPOSED IMPACTS**

- PERMANENT INTERMITTENT STREAM IMPACTS  
489 SF (0.01 AC), 85 LF



**GEO-TECHNOLOGY ASSOCIATES, INC.**

GEOTECHNICAL AND ENVIRONMENTAL CONSULTANTS

3445-A BOX HILL CORPORATE CENTER DRIVE  
ABINGDON, MARYLAND 21009  
410-515-9446  
FAX: 410-515-4895  
WWW.GTAENG.COM

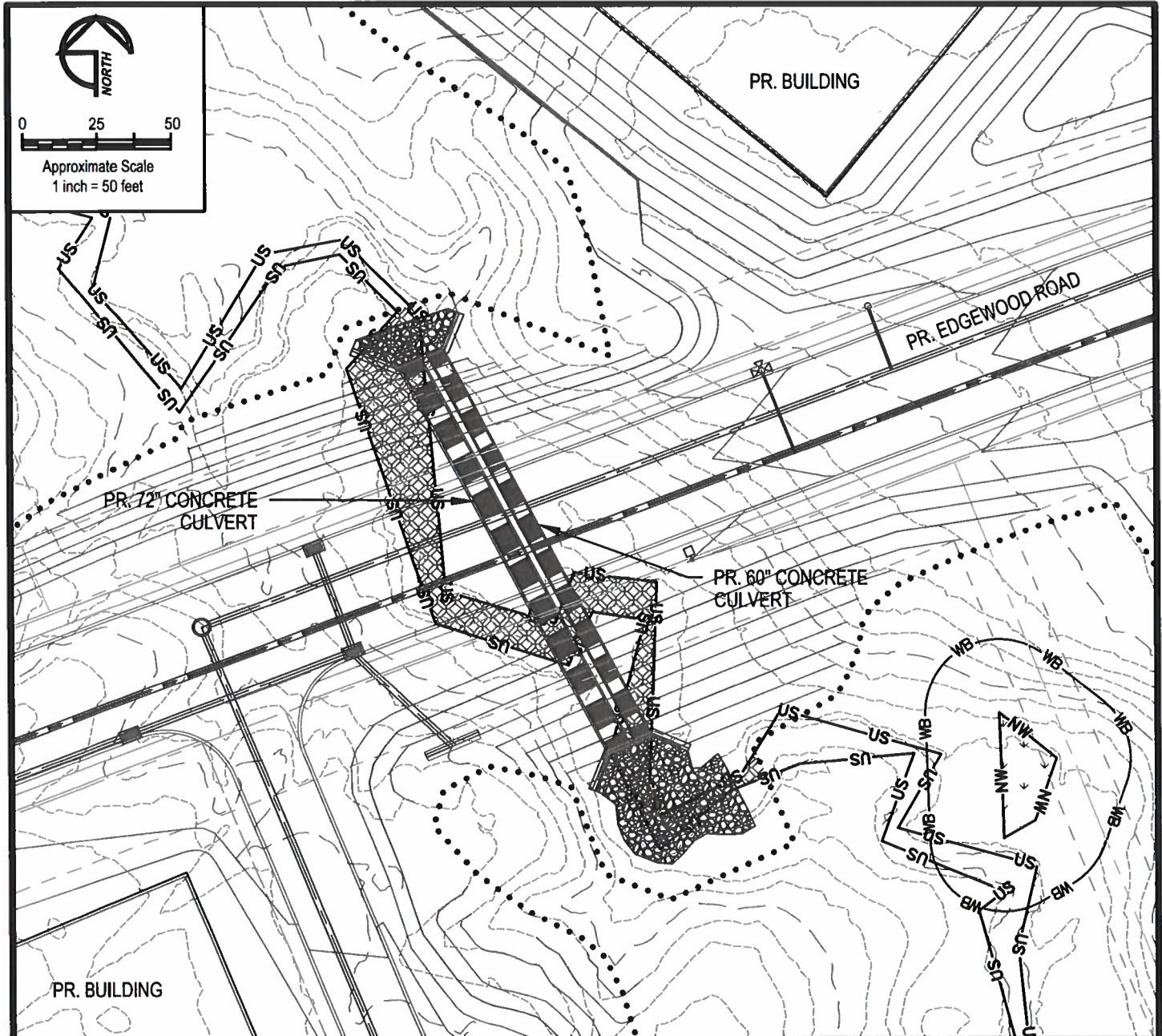
© GEO-TECHNOLOGY ASSOCIATES, INC.

**WETLAND/WATERWAY IMPACT PLATES  
ABINGDON BUSINESS PARK**

HARFORD COUNTY, MARYLAND

|                    |               |                    |               |                |                  |
|--------------------|---------------|--------------------|---------------|----------------|------------------|
| JOB NO. 31171877x1 | SCALE: 1"=50' | DATE: JULY 2, 2019 | DRAWN BY: MAJ | REVIEW BY: TAS | FIGURE: 11 OF 16 |
|--------------------|---------------|--------------------|---------------|----------------|------------------|





**LEGEND**

- ..... PR. LIMIT OF DISTURBANCE
- PR. 2' CONTOURS
- PR. 10' CONTOURS
- PR. EDGE OF PAVEMENT
- FFP ——— EX. 100-YEAR FLOODPLAIN
- US ——— EX. STREAM CHANNEL
- ▼ NW ▼ EX. NONTIDAL WETLAND
- WB ——— EX. 25' WETLAND BUFFER

**PROPOSED IMPACTS**

- PERMANENT INTERMITTENT STREAM IMPACTS  
3,522 SF (0.08 AC), 311 LF



**GEO-TECHNOLOGY ASSOCIATES, INC.**  
 GEOTECHNICAL AND ENVIRONMENTAL CONSULTANTS  
 3445-A BOX HILL CORPORATE CENTER DRIVE  
 ABINGDON, MARYLAND 21009  
 410-515-9446  
 FAX: 410-515-4895  
 WWW.GTAENG.COM

© GEO-TECHNOLOGY ASSOCIATES, INC.

**WETLAND/WATERWAY IMPACT PLATES  
 ABINGDON BUSINESS PARK**

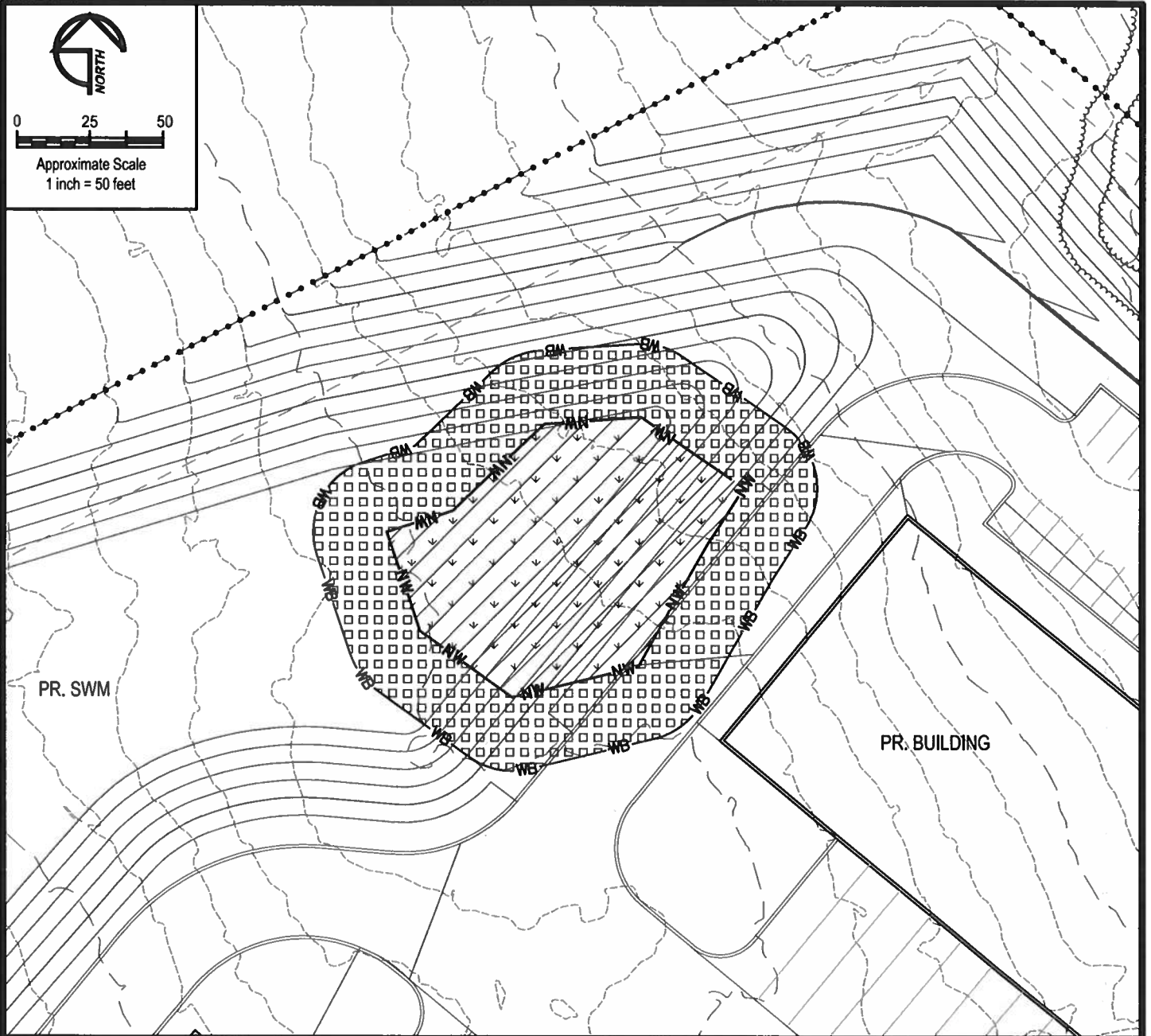
HARFORD COUNTY, MARYLAND





0 25 50

Approximate Scale  
1 inch = 50 feet



**LEGEND**

- ..... PR. LIMIT OF DISTURBANCE
- PR. 2' CONTOURS
- PR. 10' CONTOURS
- PR. EDGE OF PAVEMENT
- FFP —— EX. 100-YEAR FLOODPLAIN
- US —— EX. STREAM CHANNEL
- ↓ ↓ ↓ ↓ EX. NONTIDAL WETLAND
- WB —— EX. 25' WETLAND BUFFER

**PROPOSED IMPACTS**

- PERMANENT ISOLATED PFO WETLAND IMPACTS  
7,277 SF (0.17 AC)
- PERMANENT 25' WETLAND BUFFER IMPACTS  
10,242 SF (0.24 AC)



**GEO-TECHNOLOGY ASSOCIATES, INC.**

GEOTECHNICAL AND ENVIRONMENTAL CONSULTANTS

3445-A BOX HILL CORPORATE CENTER DRIVE  
ABINGDON, MARYLAND 21009  
410-515-9446  
FAX: 410-515-4895  
WWW.GTAENG.COM

© GEO-TECHNOLOGY ASSOCIATES, INC.

**WETLAND/WATERWAY IMPACT PLATES  
ABINGDON BUSINESS PARK**

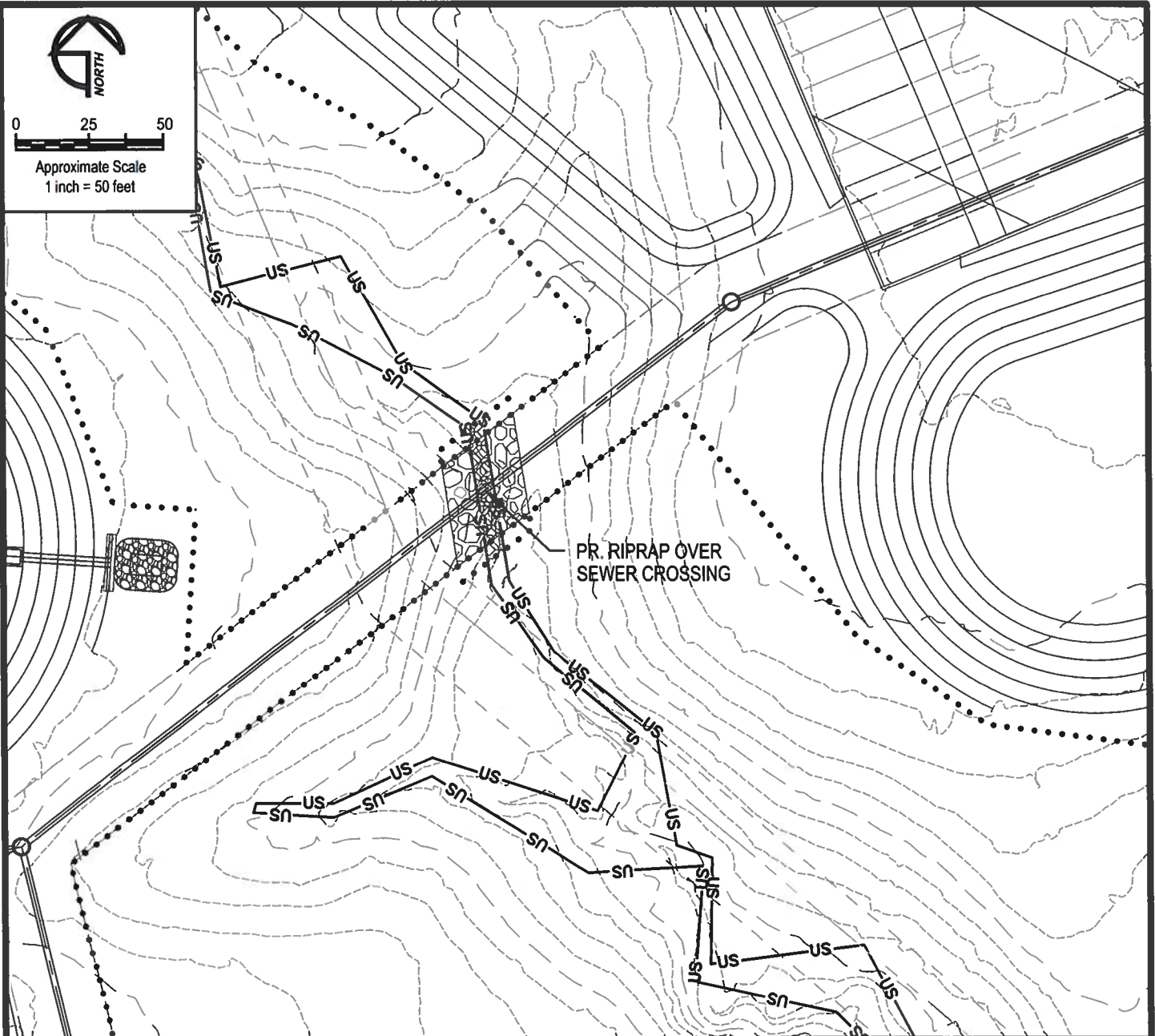
HARFORD COUNTY, MARYLAND

|                    |               |                    |               |                |                  |
|--------------------|---------------|--------------------|---------------|----------------|------------------|
| JOB NO. 31171877x1 | SCALE: 1"=50' | DATE: JULY 2, 2019 | DRAWN BY: MAJ | REVIEW BY: TAS | FIGURE: 13 OF 16 |
|--------------------|---------------|--------------------|---------------|----------------|------------------|



0 25 50



Approximate Scale  
1 inch = 50 feet



### LEGEND

- ..... PR. LIMIT OF DISTURBANCE
- PR. 2' CONTOURS
- PR. 10' CONTOURS
- PR. EDGE OF PAVEMENT
- FFP
- US
- NW
- NW
- WB
- EX. 100-YEAR FLOODPLAIN
- EX. STREAM CHANNEL
- EX. NONTIDAL WETLAND
- EX. 25' WETLAND BUFFER

### PROPOSED IMPACTS

-  PERMANENT INTERMITTENT STREAM IMPACTS  
201 SF (0.005 AC), 35 LF
-  TEMPORARY INTERMITTENT STREAM IMPACTS  
69 SF (0.002 AC), 10 LF



### GEO-TECHNOLOGY ASSOCIATES, INC.

GEOTECHNICAL AND ENVIRONMENTAL CONSULTANTS

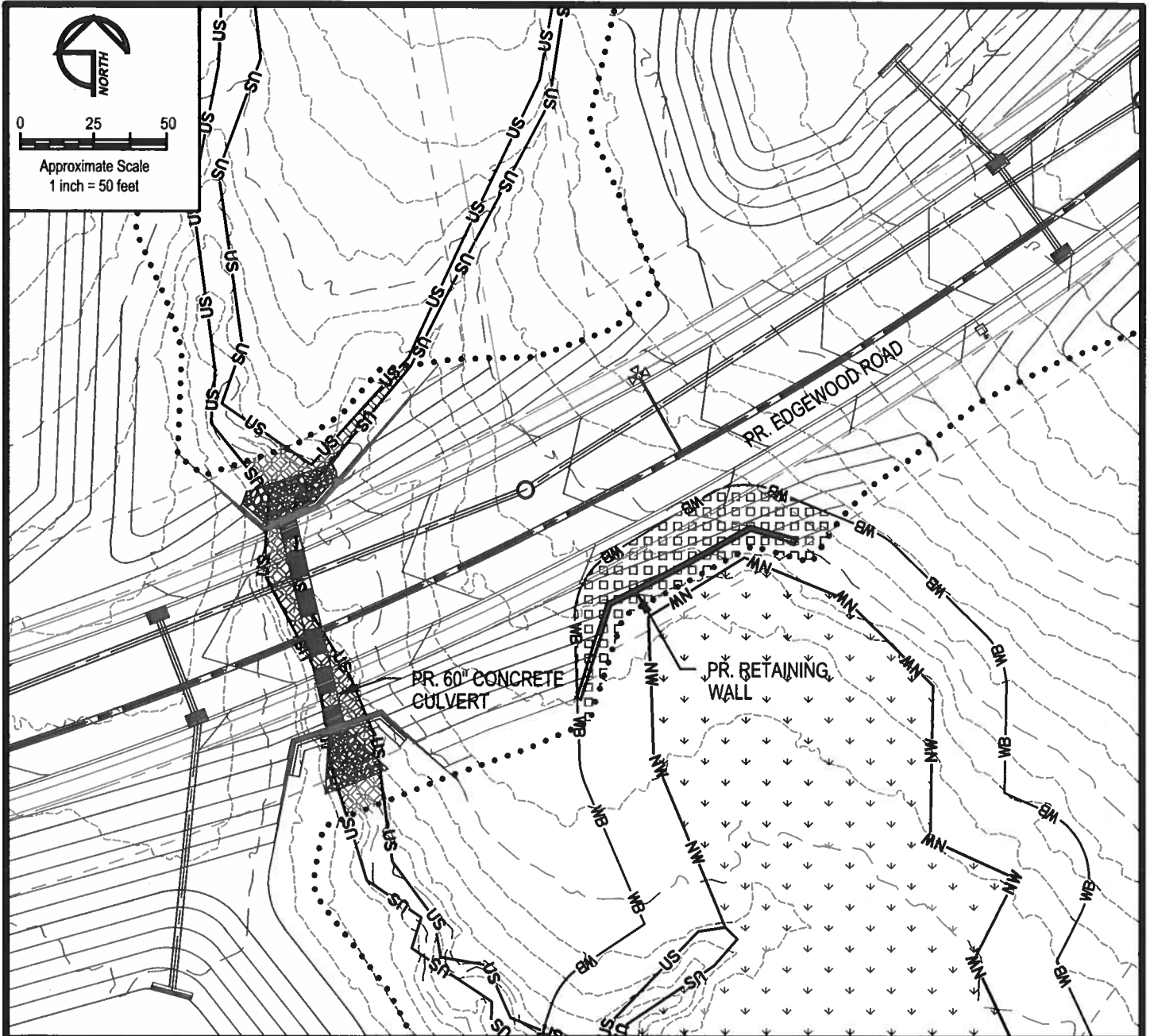
3445-A BOX HILL CORPORATE CENTER DRIVE  
ABINGDON, MARYLAND 21009  
410-515-9446  
FAX: 410-515-4895  
WWW.GTAENG.COM

© GEO-TECHNOLOGY ASSOCIATES, INC.

## WETLAND/WATERWAY IMPACT PLATES ABINGDON BUSINESS PARK

HARFORD COUNTY, MARYLAND

JOB NO. 31171877x1 SCALE: 1"=50' DATE: JULY 2, 2019 DRAWN BY: MAJ REVIEW BY: TAS FIGURE: 14 OF 16



**LEGEND**

- ..... PR. LIMIT OF DISTURBANCE
- PR. 2' CONTOURS
- PR. 10' CONTOURS
- PR. EDGE OF PAVEMENT
- FFP EX. 100-YEAR FLOODPLAIN
- US EX. STREAM CHANNEL
- ▼▼ NW▼▼ EX. NONTIDAL WETLAND
- WB EX. 25' WETLAND BUFFER

**PROPOSED IMPACTS**

- PERMANENT INTERMITTENT STREAM IMPACTS  
1,248 SF (0.03 AC), 109 LF
- TEMPORARY INTERMITTENT STREAM IMPACTS  
491 SF (0.01 AC), 67 LF
- PERMANENT 25' WETLAND BUFFER IMPACTS  
2,235 SF (0.05 AC)



**GEO-TECHNOLOGY ASSOCIATES, INC.**  
 GEOTECHNICAL AND ENVIRONMENTAL CONSULTANTS  
 3445-A BOX HILL CORPORATE CENTER DRIVE  
 ABINGDON, MARYLAND 21009  
 410-515-9446  
 FAX: 410-515-4895  
 WWW.GTAENG.COM

**WETLAND/WATERWAY IMPACT PLATES  
 ABINGDON BUSINESS PARK**

HARFORD COUNTY, MARYLAND



# SUMMARY OF IMPACTS

## STREAM CHANNELS

|   |   |
|---|---|
| TEMPORARY PERENNIAL STREAM IMPACTS =    | 1,573 SF (0.04 ACRES)<br>120 LINEAR FEET    |
| PERMANENT INTERMITTENT STREAM IMPACTS = | 6,457 SF (0.15 ACRES)<br>570 LINEAR FEET    |
| TEMPORARY INTERMITTENT STREAM IMPACTS = | 3,235 SF (0.07 ACRES)<br>230 LINEAR FEET    |
| PERMANENT EPHEMERAL CHANNEL IMPACTS =   | 5,153 SF (0.12 ACRES)<br>728 LINEAR FEET    |
| TOTAL STREAM IMPACTS =                  | 16,418 SF (0.38 ACRES)<br>1,648 LINEAR FEET |

## NONTIDAL WETLANDS

|  |                        |
|--|------------------------|
| PERMANENT ISOLATED PFO WETLAND IMPACTS = | 17,112 SF (0.39 ACRES) |
|--|------------------------|

## NONTIDAL WETLAND BUFFERS

|                                    |                        |
|------------------------------------|------------------------|
| PERMANENT WETLAND BUFFER IMPACTS = | 32,782 SF (0.75 ACRES) |
|------------------------------------|------------------------|

## 100-YEAR FLOODPLAIN

|   |                        |
|---|------------------------|
| PERMANENT 100-YEAR FLOODPLAIN IMPACTS = | 4,618 SF (0.11 ACRES)  |
| TEMPORARY 100-YEAR FLOODPLAIN IMPACTS = | 17,764 SF (0.41 ACRES) |



### GEO-TECHNOLOGY ASSOCIATES, INC.

GEOTECHNICAL AND ENVIRONMENTAL CONSULTANTS

3445-A BOX HILL CORPORATE CENTER DRIVE

ABINGDON, MARYLAND 21009

410-515-9446

FAX: 410-515-4895

WWW.GTAENG.COM

© GEO-TECHNOLOGY ASSOCIATES, INC.

## WETLAND/WATERWAY IMPACT PLATES ABINGDON BUSINESS PARK

HARFORD COUNTY, MARYLAND