



Martin O'Malley, Governor

Maryland Department of Natural Resources
Resource Assessment Service
MARYLAND GEOLOGICAL SURVEY
2300 St. Paul Street
Baltimore, Maryland 21218



John R. Griffin, Secretary

Fact Sheet 18b: Calvert Aquifer System Test Wells Located at the Warner Tract, Dorchester County, Maryland

This fact sheet is one in a series presenting results of test-drilling activities conducted as part of the Maryland Coastal Plain Aquifer Study to fill key data gaps. The test wells will help to better understand the structure, flow system, water-bearing properties, and natural water quality of the Aquia-Hornerstown, Miocene-age, and Manokin aquifers on the Eastern Shore of Maryland. In addition, the test wells will provide long-term water-level monitoring for resource assessment and flow-model calibration. The Maryland Coastal Plain Aquifer Study is a long-term, multi-phase initiative for comprehensive regional aquifer assessment developed in response to recommendations of the 2004 Maryland Advisory Committee on the Management and Protection of the State's Water Resources (Wolman Commission). The study is being conducted by the Maryland Geological Survey and the U.S. Geological Survey (USGS), with funding support from the Maryland Department of the Environment (MDE).

Key Results

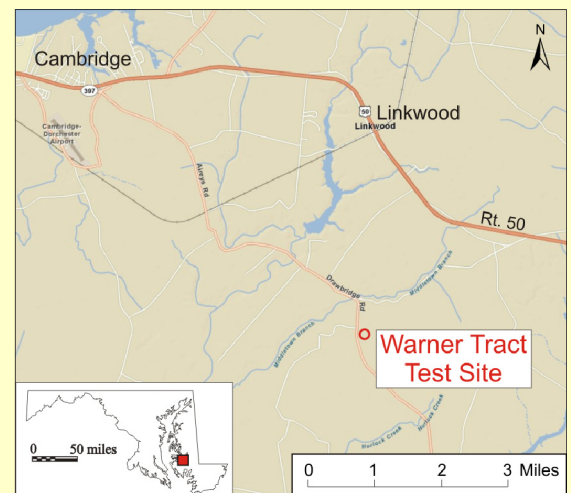
- Sands of the Calvert aquifer system and Choptank aquifer at the Idylwild site are fine-grained, muddy, and contain abundant weathered shell material.
- Sands within the Calvert aquifer system are hydraulically connected.
- The sands exhibit moderate transmissivity (514 feet squared per day [ft²/day]) for the Calvert aquifer system and low transmissivity (28 ft²/day) for the Choptank aquifer.
- Both wells contained elevated amounts of sodium (242-252 milligrams per liter [mg/L]) and total dissolved solids (735-763 mg/L). None of the U.S. Environmental Protection Agency's Primary Drinking-Water Standards were exceeded.

Introduction

The Miocene-age Calvert aquifer system is an important water supply in the central Eastern Shore counties of Dorchester, Caroline, and Talbot, Maryland, as well as central Delaware. The Calvert aquifer system includes (from shallow to deep) the Frederica, Federalsburg, and Cheswold aquifers. These aquifers, more prevalent in Delaware, were described and mapped in Maryland by Cushing, Kantrowitz, and Taylor (1973); however, the borehole correlations and hydraulic properties were not thoroughly documented. No subsequent studies of the Calvert aquifer system have been conducted in Maryland. It is uncertain whether these units act as independent aquifers or as a single hydraulic unit, and whether they correlate with units mapped in Delaware. These considerations are important in determining whether the MDE groundwater appropriations should be issued for three individual aquifers or for a single composite aquifer. Test wells are needed to assess the hydraulic characteristics of the Calvert aquifer system, and to determine the connectivity of the individual units. Additionally, observation wells are needed to help determine hydraulic continuity of individual aquifer units, monitor water-level trends, and estimate available drawdown. The Warner Tract test site is one of five well clusters drilled in central Eastern Shore of Maryland as part of a systematic investigation of the Calvert aquifer system.

Well Construction and Testing

Test wells DO Df 12, 13, and 14 were drilled between July 21 and 29, 2010 to depths of 400, 280, and 180 feet (ft), respectively. Drill cuttings were collected at 10-ft intervals, three split-spoon samples were collected, and gross lithologic descriptions were made. Geophysical logs (gamma radiation, 16- and 64-inch resistivity, single-point resistivity, self-potential, and 6-ft lateral) were run in the open hole by the USGS Maryland Water Science Center. The holes were drilled to 9 5/8-inch diameter and well screens (4.5-inch diameter SDR-17 PVC; 0.02-inch slot) were installed from 290 to 330 ft in DO Df 12, 242 to 272 ft in DO Df 13, and 134 to 174 ft in DO Df 14. All wells include 5-ft cellars. The wells were cased to the surface with 4.5-inch SDR-17 PVC pipe. The wells were completed with steel protective casings and locking caps.



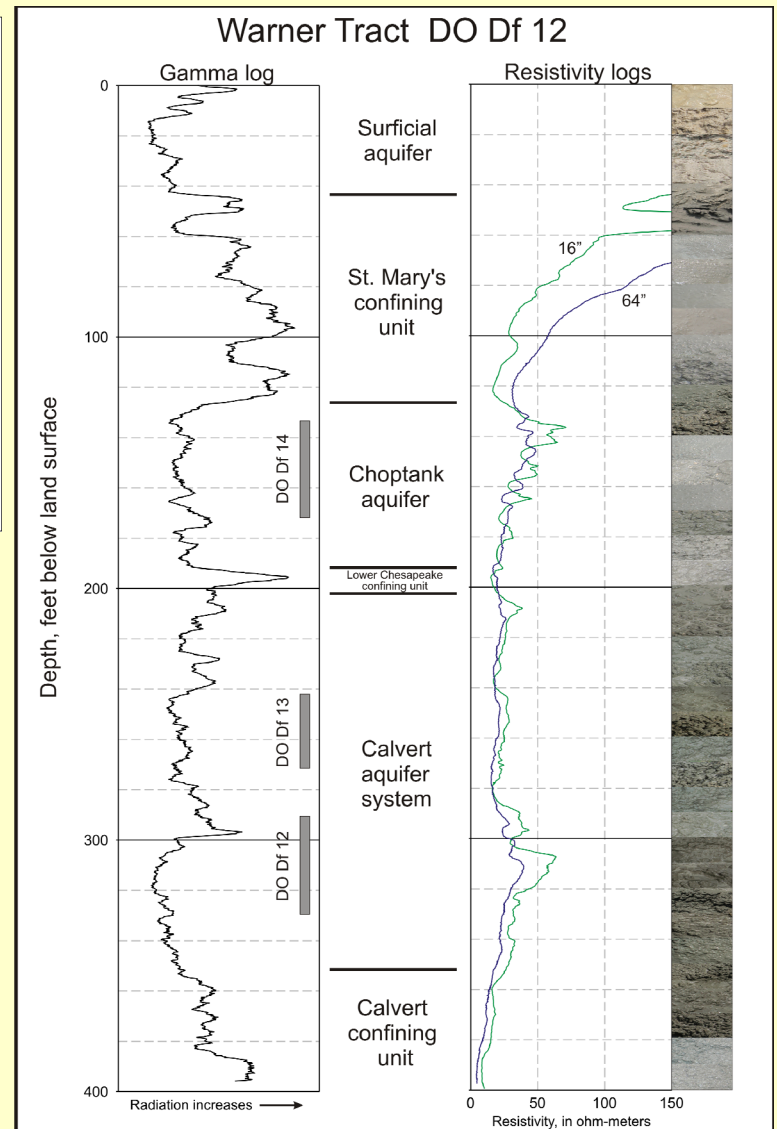
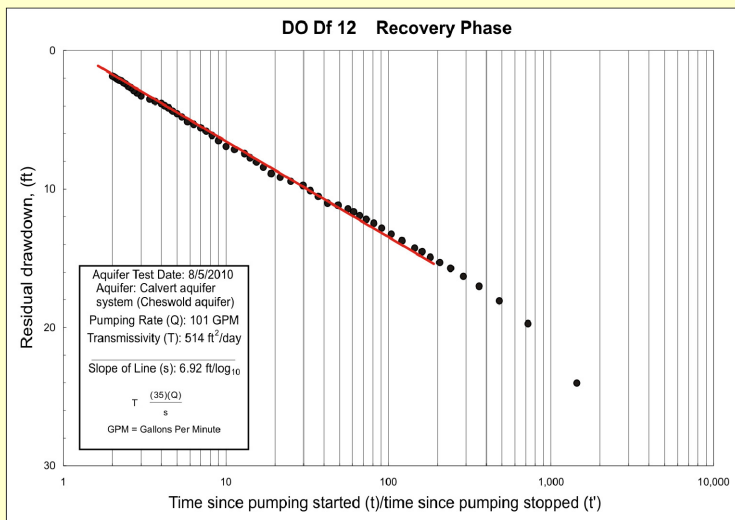
The deepest test well penetrated (from top to bottom) the Surficial aquifer, the St. Mary's confining unit, the Choptank aquifer, the Lower Chesapeake confining unit, the Calvert aquifer system, and part of the Calvert confining unit. DO Df 14 was screened in the Choptank aquifer, which at the test site consists of fine, silty sand with abundant weathered shell material. The uppermost sand of the Calvert aquifer system was not screened, as it was too fine-grained to be productive. DO Df 13 was screened in the middle

sand of the Calvert aquifer system, which consisted of very fine, silty sand. DO Df 12 was screened in the lowermost sand of the Calvert aquifer system, which consisted of fine-grained marine sand with shell fragments.

The completed wells were developed using compressed air to remove drilling mud from the screen and gravel pack. DO Df 13 could not produce enough water to be properly developed and tested. Twenty-four hour aquifer tests were conducted on DO Df 12 and 14 at constant rates of 101 gallons per minute (gpm) and 8.6 gpm, respectively. Water levels responded in the shallower sand in the Calvert aquifer system when the deeper sand was pumped. No pumping effects were observed between the Calvert aquifer system and Choptank aquifer. Transmissivities calculated by the Cooper-Jacob method for the recovery phase of the tests were 514 ft²/day for DO Df 12 and 28 ft²/day for DO Df 14. During monitoring, water levels changed in response to atmospheric pressure.

Water samples from DO Df 12 and DO Df 14 collected during the aquifer tests were analyzed for field parameters (pH, alkalinity, specific conductance, dissolved oxygen), major ions, nutrients, metals, and radionuclides. Both wells contained elevated amounts of sodium (242-252 mg/L) and total dissolved solids (735-763 mg/L). None of the USEPA's Primary Drinking Water Standards were exceeded.

SUMMARY INFORMATION							
Well number	Permit number	Screened interval (feet below land surface)	Aquifer	Pump rate (gallons per minute)	Transmissivity (feet squared per day)	pH	Total dissolved solids (residue on evaporation @ 180° C.) (milligrams per liter)
DO Df 12	DO-95-1027	290 - 330	Calvert	101	514	8.0	735
DO Df 13	DO-95-1028	242 - 272	Calvert	No pumping test conducted			
DO Df 14	DO-95-1029	134 - 174	Choptank	8.6	28	7.8	763



Reference

Cushing, E.M., Kantrowitz, I.H., and Taylor, K.R., 1973, Water Resources of the Delmarva Peninsula: U.S. Geological Survey Professional Paper 822, 58 p.

For more information, contact Andrew W. Staley, Maryland Geological Survey, astaley@dnr.state.md.us
 DNR Publication Number: 12-9192011-527, December, 2011

Other Contact Information: DNR: Toll free in Maryland: 1-877-620-8DNR; Maryland Geological Survey: 410-554-5500; TTY users call via the MD Relay
 Internet Address: www.dnr.Maryland.gov Maryland Geological Survey: www.mgs.md.gov

- The facilities and services of the Maryland Department of Natural Resources are available to all without regard to race, color, religion, sex, sexual orientation, age, national origin or physical or mental disability.
- This document is available in alternative format upon request from a qualified individual with disability.